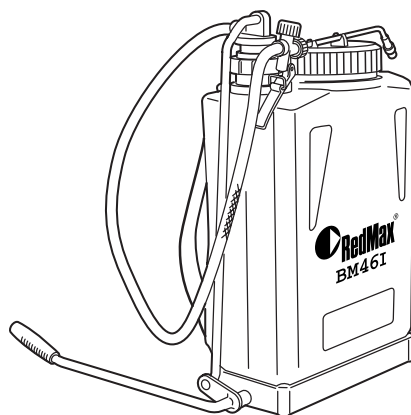




ILLUSTRATED PARTS LIST

BACKPACK SPRAYER

BM46I



⚠ WARNING ⚠

Before using our products, please read this manual carefully to understand the proper use of your unit.

⚠ WARNING ⚠

This sprayer is not designed to be used with acids of any kind, corrosive products like caustic soda, gasoline, materials capable of generating heat, hot fluids, explosive or highly volatile products.

USE OF THESE AND OTHERS EXPOSE USERS TO SERIOUS INJURY AND EVEN DEATH.

9. Storage



Never store chemicals in your sprayer for any length of time

1. Before you remove cap, be sure there is no pressure in the tank. In order to release pressure, invert unit upside down and squeeze spray pistol (aim away from you). Pressure will escape; when hissing stops, all pressure has been released. Remove pump assembly by turning counter-clockwise. The pump handle has two locking positions, one turning clockwise and one counter-clockwise.
2. Remove cap and pour out remaining solution, then rinse all parts thoroughly with clean water.
3. Add 1/2 gallon of fresh water in tank. Pressurize, and flush pumping system by depressing trigger for at least two minutes; then drain all remaining water.
4. Always store tank clean and empty in a dry, shaded location.

10. Disposal

When disposing your machine, or chemical, be sure to allow your local regulations.

11. Parts list

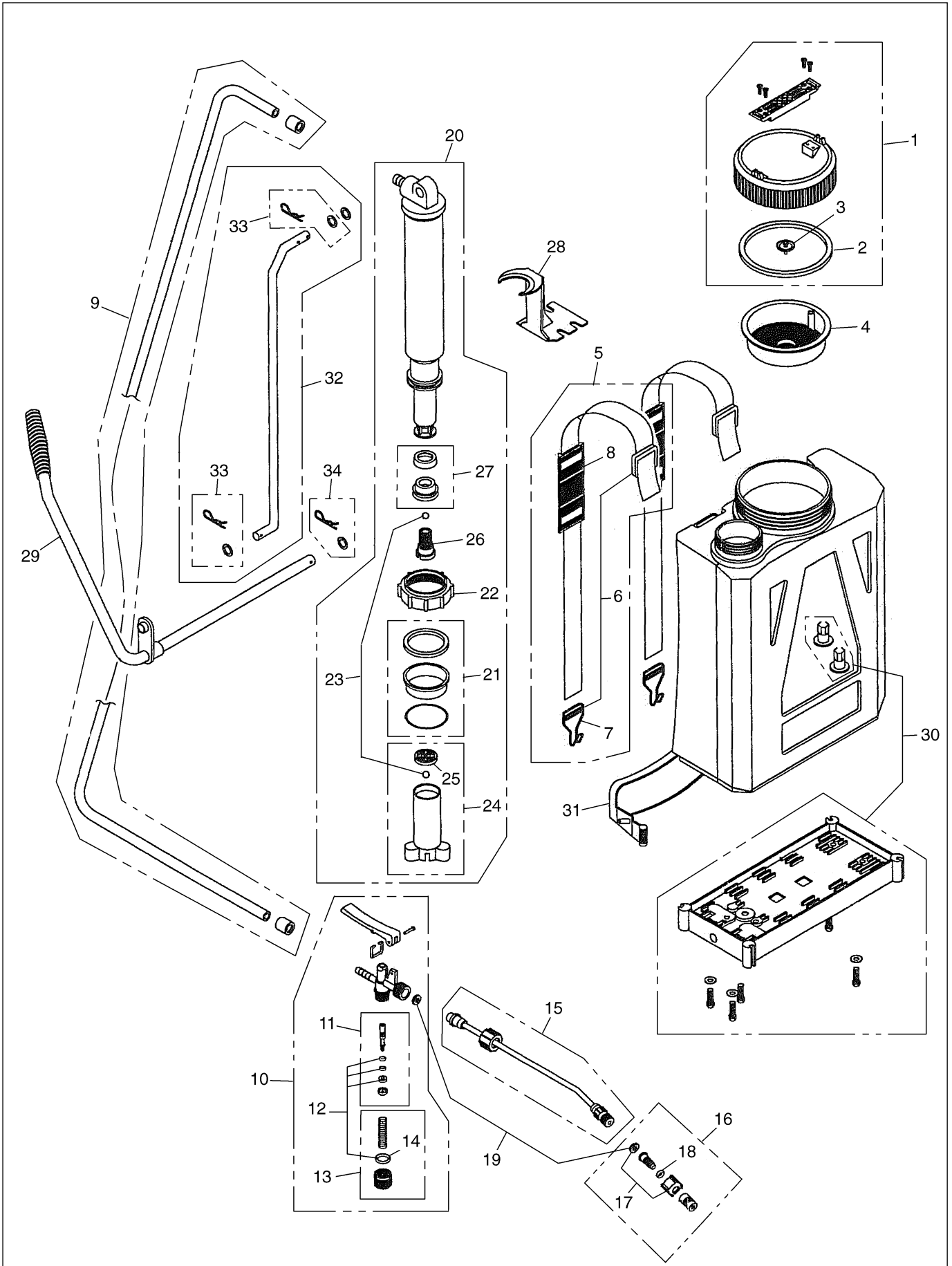
BACKPACK SPRAYER

BM46I

NOTE :

1. Use RedMax/ZENOAH genuine parts as specified in the parts list for repair and/or replacement.
2. RedMax/ZENOAH does not warrant the machines, which have been damaged by the use of any parts other than those specified by the company.
3. When placing parts orders for repair and/or replacement, check if the model name is applicable to those specified in the parts list, then use parts number described in the parts list.
4. The contents described in the parts list may change due to improvement.
5. The parts for the machine shall be supplied seven (7) years after the machine is discontinued. [It is possible that some specific parts may be subject to change of their delivery term and list price within the limit of seven (7) years after the machine is discontinued. It is also possible that some parts may be available even after the limit of seven (7) years.]

11. Parts List : BM46I



11. Parts List : BM46I

Key#	Part KIT Number	Description	Q'ty
1	RMKIT0571	Red cap with handle and check valve.	1
2	RMKIT02A	• Seal.	1
3	RMKIT02CH	• Check valve for cap.	1
4	RMKIT01AS	Strainer with venting hole.	1
5	RMKIT15	Shoulder strap assembly.	2
6	RMKIT31	• Belt hook & buckle.	2
7	RMKIT283	•• Belt hook	2
8	RMKIT36	• Shoulder pads. (2 Pads,Optional)	1
9	RMKIT17	Hose & 2 Hose Clamps	1
10	RMKIT18	Complete spray pistol.	1
11	RMKIT19	• Spindle set.	1
12	RMKIT20	• Spindle O-ring set.	1
13	RMKIT21	• Plug set.	1
14	RMKIT367	•• O-ring for plug.	1
15	RMKIT22	Brass spray wand 20".	1
16	RMKIT25	Spray tip set.	1
17	RMKIT24	• Nozzle holder.	1
18	RMKIT26	• Spray tip O-ring.	1
19	RMKIT392	Washer set for gun and nozzle.	1
20	RMKIT140	Complete pump assembly.	1
21	RMKIT146	• Nylon guide fabric seal & O-ring.	1
22	RMKIT147	• Pump unit threaded holder.	1
23	RMKIT182	• Plastic ball.	1
24	RMKIT299	• Complete cylinder.	1
25	RMKIT297	•• Plastic grate for cylinder.	1
26	RMKIT141	• Piston holder.	1
27	RMKIT142	• 2 lip piston cup & plastic cap.	1
28	RMKIT145	Agitator.	1
29	RMKIT0568	Red metal pump handle with plastic grip.	1
30	RMKIT0569	Red complete base assembly.	1
31	RMKIT150	Hip support.	1
32	RMKIT0570	Red metal pump lever with locking pin.	1
33	RMKIT180	• Locking pin (small) & washer for pump handle.	2
34	RMKIT181	Locking pin-pump handle (large).	1