

SB, Wheel binding, Powermax 42 & 36 E/A Li, 2012-06

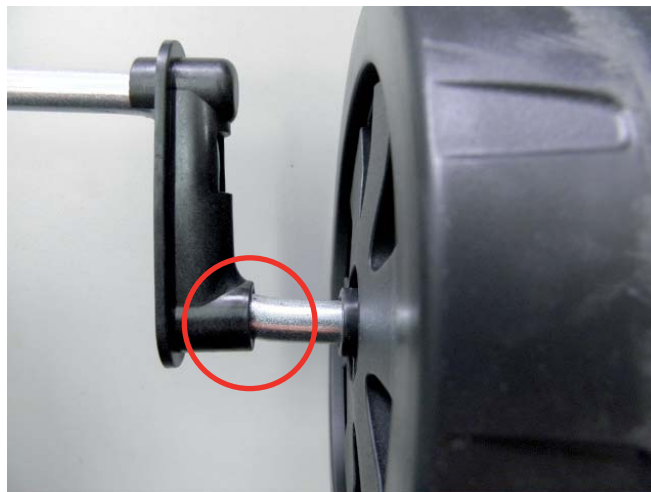
Products involved:

All Powermax 42 & 36 E /A Li models produced after W50 2009.

Product numbers: 4037,4043, 4035 & 4041

Service information:

We have observed some customer returns due to complaints that the wheels does not run smoothly while using the lawnmower. Problem arises when wheel is pushed against inner part of wheel axle and then binds on the radius of the axle.



Field fix: For products already on market a fix were a washer and new starlock washer is added helps the problem. A permanent fix will be implemented in production as soon as possible.

Article numbers of parts used for field fix **Washer: 5811571-01, Starlock: 5149680-00**, 1 washer and 1 starlock per wheel axle is needed.

