



596766201

2 Gal. Professional Sprayer

Use and Care Manual



⚠ CAUTION: Read and follow all instructions

For Help, Information or Parts, Contact your nearest authorized service dealer. Visit RedMax® online at www.redmax.com.

Manual No. 183853

Rev. 03

ECN18-047

5 1/2" X 8 1/2" Booklet

SAFETY PRECAUTIONS

- Read owner's manual completely before operating this sprayer.
- Always use goggles, gloves, and protective clothing when using sprayer.
- Read and follow all instructions and cautions on label of products used in this sprayer.
- Never use flammable liquids, caustics, acids, or hot water in this tank.
- Do not leave sprayer in the sun when not in use.
- Spray when air is calm to prevent drift of chemicals.
- Do not use sprayer near open flame or anything that could cause ignition of the spray.
- Always inspect hose and all hose connections before each use. A damaged hose, or loose hose connection can result in unintended exposure to the pressurized chemical, resulting in serious injury or property damage.
- Do not lift or carry sprayer by the hose, shut-off valve, or extension. Carry by pump handle only, making sure handle is properly locked in place before lifting.
- Do not pressurize with any mechanical device such as an air compressor, since this can create a dangerous pressure level and bursting of parts resulting in serious injury. Only use original pump.
- Do not store chemicals in this tank.
- Always release pressure when sprayer is not in use and before removing pump from tank.
- Do not stand with face or body over top of tank when pumping or loosening pump, to prevent pump or solution from striking you, resulting in serious injury.
- **Clean and rinse sprayer thoroughly after each use.**
- Never attempt to alter sprayer from original condition.
- Always use replacement parts from original manufacturer.
- Keep the sprayer and all chemicals out of the reach of children.

WARNING

ALWAYS CLEAN THE SPRAYER AND SHUT-OFF THOROUGHLY AFTER EACH USE OR WHEN CHANGING APPLICATIONS AS DESCRIBED IN THE *CLEANING* SECTION. FAILURE TO COMPLETELY CLEAN MAY CAUSE CROSS-CONTAMINATION.

CAUTION

Always empty, clean and dry tank, pump system, shut-off, hose, and extension after each use. FAILURE TO DO SO MAY WEAKEN SPRAYER COMPONENTS, CAUSING COMPONENTS TO RUPTURE WHEN PRESSURIZED. Additionally, FAILURE TO CLEAN AND PROPERLY MAINTAIN YOUR SPRAYER WILL VOID MANUFACTURER'S WARRANTY.

WARNING

The sprayer is operated with liquid under pressure. Failure to observe caution and to follow instructions for operating and cleaning can cause tank, hose and other parts to be weakened and rupture under pressure. This can result in serious injury from high pressure discharge of liquids or forcible ejection of parts. Do not use flammable materials in this sprayer. Material could ignite or explode, causing serious injury and/or possible death. For safe use of this product, you must read and follow all instructions before use.

TEST SPRAYER WITH WATER BEFORE USING ANY CHEMICALS.

If you experience problems or have questions contact your nearest authorized service dealer.

Visit RedMax® online at www.redmax.com.

ASSEMBLY INSTRUCTIONS

English

Français

Español

Assemble Hose To Tank

IMPORTANT: Do not attempt to heat or alter hose, hose nut, or barb prior to assembly.

1. Align hose barb tabs, push hose into tank until it stops (See Figure A).
2. Slide hose nut into place and turn clockwise to tighten. (See Figure B).

NOTE: Do not use tools to tighten hose nut.

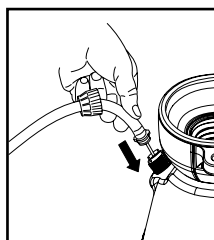


Figure A

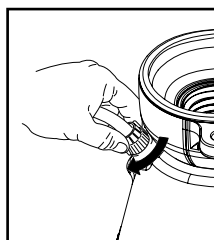
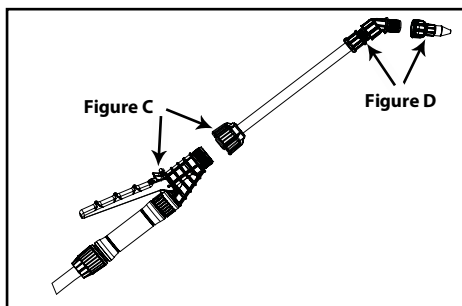


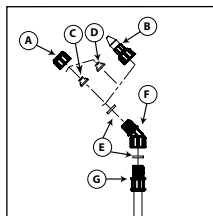
Figure B

Assemble Extension, Shut-Off & Nozzle

1. Install the extension onto the shut-off assembly and tighten the nut securely. (See Figure C)
2. Install selected nozzle onto the end of the extension and tighten securely. (See Figure D)



SELECT NOZZLE FROM CHART BELOW



- A. Cap Nut
B. Adjustable Cone Nozzle
C. Red High-Volume Fan Nozzle
D. Yellow Low-Volume Fan Nozzle
E. Flat Seal
F. Adapter
G. Extension

ADJUSTABLE CONE USES:



- Spot spraying in or around flower beds, trees, and shrubs.
- Edging along fences, driveways, and walkways.
- Killing brush such as poison ivy, poison oak, kudzu and wild blackberry.
- Preparing garden beds for planting of ornamentals and vegetables.

RED HIGH VOLUME FAN NOZZLE USES:



- Lawn replacement. Kill lawn and weeds before planting a new lawn.
- Preparing large areas for planting of ornamental and vegetable gardens.

YELLOW LOW VOLUME FAN NOZZLE USES:



- For precision spraying in confined areas such as gardens and flower beds.

Filling

IMPORTANT: Always make sure the pressure is released from the tank before filling or servicing.

1. Pull up on the knob of the pressure release valve until all the pressure is released from the tank. (See Figure E.)

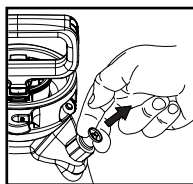


Figure E

2. Turn the pump handle counterclockwise to remove the pump (See Figure F).
3. Fill the tank to the desired level. See fill markings on side of tank. (Always refer to chemical manufacturer for proper mixture).
4. Install the pump into the tank opening and turn clockwise until tightly sealed against the tank (See Figure G).

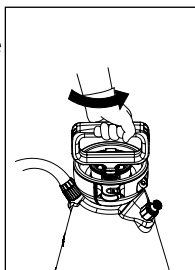


Figure F

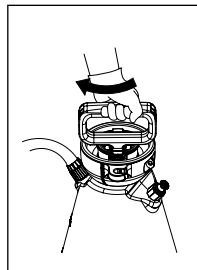


Figure G

Pressurizing

1. Make sure shut-off lock is not engaged. (If shut-off lock is engaged while pressurizing, the unit will immediately start spraying).
2. Push down on the handle and turn counterclockwise to unlock the handle (See Figure H-1H).
3. Pressurize the sprayer by pumping the handle in a smooth up and down motion (See Figure H-2H).
4. Push down on the handle and turn clockwise to lock the handle into the pump (See Figure H-3H).

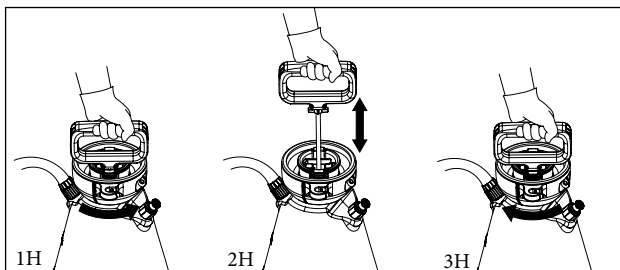


Figure H

Spraying and Locking

1. Direct nozzle away from you and squeeze shut-off lever to begin spraying.
2. For continuous spraying, squeeze lever and rotate lock (See Figure J).
3. Unlock if needed and release shut-off lever to stop spraying.
4. Turn the nozzle tip to adjust the spray pattern.

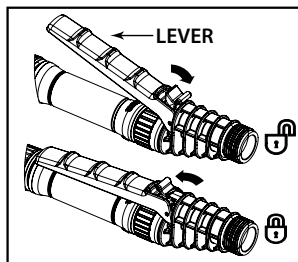


Figure J

Finish

1. Depressurize the tank as described in *Release Tank Pressure* section.
2. Turn the pump handle counterclockwise to remove the pump.
3. Empty any remaining liquid according to the product disposal directions.
4. Follow the *Cleaning* instructions.

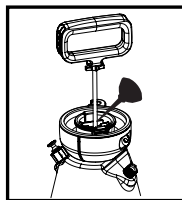
Cleaning

1. Remove the pump as described in the *Finish* section.
2. Fill the tank with cool, clean tap water. Replace the pump and tighten securely.
3. Agitate the tank to rinse the chemical from the tank wall and pump.
4. Remove the pump and empty the contents into gravel or bare soil.
5. Refill the tank with cool, clean tap water.
6. Make sure the pump is free of dirt or debris and reinstall into the tank. Tighten securely.
7. Pressurize the tank as described in the *Pressurizing* section.
8. Direct the nozzle away from you and activate the shut-off for at least 30 seconds to clean the hose and shut-off.
9. Release pressure as described in the *Release Tank Pressure* section.
10. Remove the pump and empty the contents into gravel or bare soil.
11. Repeat steps 5 - 10 until thoroughly cleaned.

Sprayer Storage

1. Sprayer tank should be hung upside down, with the pump removed.
2. Do not store or leave any solution in the tank after use.
3. Store in a warm, dry location out of direct sunlight.
4. **Keep the sprayer and all chemicals out of the reach of children.**

MAINTENANCE



Pump Lubrication

Pump should be periodically oiled by applying 10 to 12 drops of light oil down the pump rod through the opening in the pump cap as shown.

Pump Disassembly & Reassembly

NOTE: Remove pump from tank prior to disassembly.

1. Inspect gasket. If worn or damaged, remove and replace. (**See Figure 1**)
2. To remove pump cap from pump barrel, squeeze the tabs on the cap and pull away from barrel. (**See Figure 2**)



Figure 1

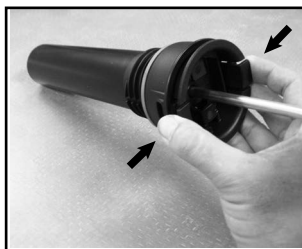


Figure 2

MAINTENANCE CONTINUED

3. Inspect o-ring. If worn or damaged, remove and replace. Lubricate o-ring with petroleum jelly. **(See Figure 3)**
4. Inspect check valve in bottom of barrel. If worn or damaged, remove and replace by pressing into hole in bottom of barrel. **(See Figure 4)**
5. Insert the pump handle assembly into the barrel. Align the tabs of the pump cap with the rectangle cutouts on the barrel. Push cap into place until the cap snaps securely into position. **(See Figure 5)**

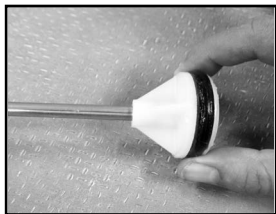


Figure 3



Figure 4

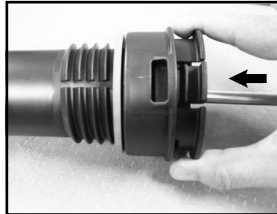


Figure 5

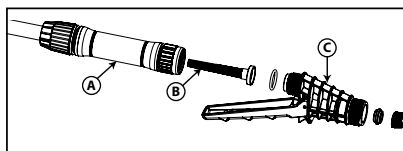
Nozzle Maintenance

1. If nozzle clogs, remove and disassemble the nozzle assembly.
2. Clean the openings of any obstructions and reassemble.

Shut-off Maintenance

Always depressurize sprayer before maintenance.

1. Unscrew the handle from the shut-off assembly.
2. Remove the filter from the shut-off assembly.
3. Clean any debris from inside the handle, shut-off assembly, or the filter by rinsing with cool, clean water.
4. Reassemble the components as shown and tighten all connections securely.



A. Handle
B. Filter
C. Shut-off Assembly

TROUBLESHOOTING

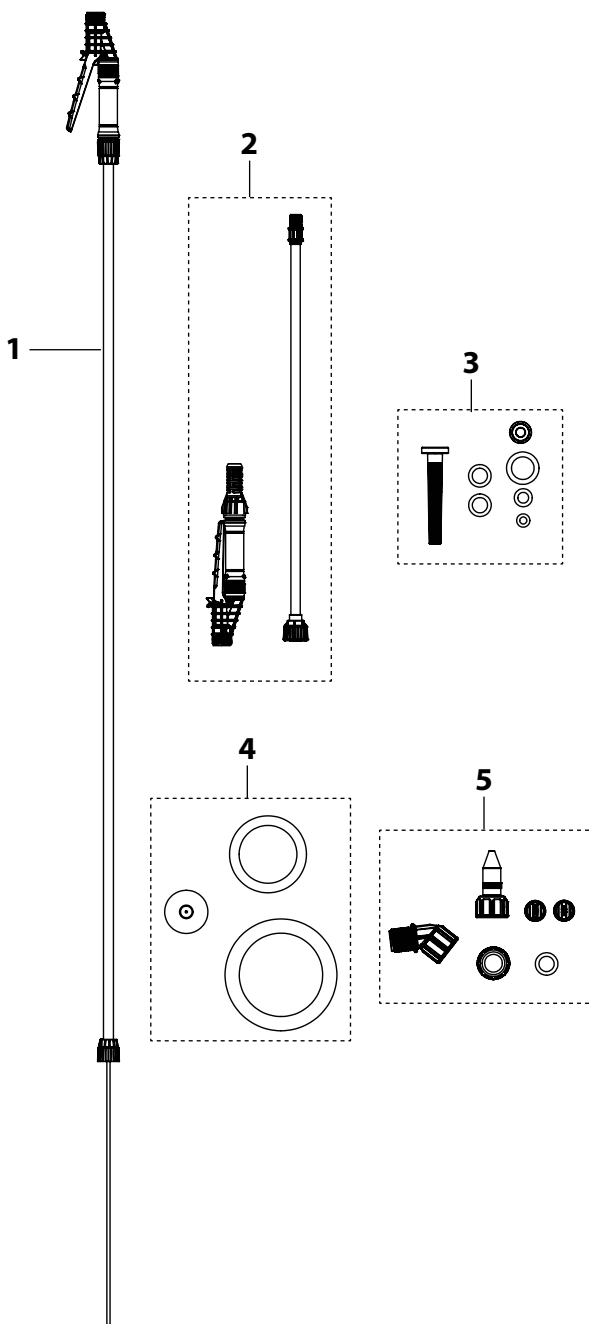
English

Français

Español

TROUBLE	LOOK FOR	REMEDY
Sprayer starts to spray when pumping or sprayer will not stop spraying when shut-off lever is released.	Shut-off lock is engaged.	Squeeze shut-off lever and rotate the lock towards the nozzle as described in <i>Spraying and Locking</i> section.
Sprayer leaks at pump or sprayer does not build pressure.	<ol style="list-style-type: none"> 1. Dirt or debris on pump gasket (kit #4) or closure. 2. Chipped, torn, swollen, or defective pump gasket (kit #4). 3. Check valve (kit #4) at bottom of pump assembly. 4. Worn or damaged o-ring (kit #4) on piston. 	<ol style="list-style-type: none"> 1. Clean dirt or debris from gasket (kit #4) or closure. 2. Remove old gasket (kit #4) and replace with new as described in <i>Pump Disassembly & Reassembly</i> section. 3. Replace if missing or damaged as described in <i>Pump Disassembly & Reassembly</i> section. 4. Replace if worn or damaged as described in <i>Pump Disassembly & Reassembly</i> section.
Sprayer material overflows through pump barrel or pump handle rises when handle is unlocked.	<ol style="list-style-type: none"> 1. Dirt or debris under check valve (kit #4) on pump. 2. Chipped, torn, or swollen pump check valve (kit #4). 	<ol style="list-style-type: none"> 1. Clean check valve (kit #4) and valve sealing surface on pump. 2. Replace check valve (kit #4) as described in <i>Pump Disassembly & Reassembly</i> section.
Hose leaks at tank or shut-off.	<ol style="list-style-type: none"> 1. Loose hose. 2. Cracked, swollen, or faulty hose. 	<ol style="list-style-type: none"> 1. Tighten hose nut. 2. Replace shut-off assembly.
Sprayer is difficult to pump.	<ol style="list-style-type: none"> 1. Damaged piston o-ring (kit #4). 2. Piston o-ring (kit #4) is dry. 	<ol style="list-style-type: none"> 1. Replace piston o-ring as described in <i>Pump Disassembly & Reassembly</i> section. 2. Lubricate piston o-ring as described in <i>Pump Disassembly & Reassembly</i> section.
Sprayer tank leaks.	Evidence of spray material escaping from the tank.	Replace entire sprayer.
Nozzle drips when shut-off lever is released.	<ol style="list-style-type: none"> 1. Dirt or debris in shut-off valve. 2. Damaged o-ring or seal in shut-off (kit #3). 	<ol style="list-style-type: none"> 1. Clean shut-off as described in <i>Shut-off Maintenance</i> section. 2. Service shut-off seals as described in <i>Maintenance service kit #3</i>.
Nozzle tip leaks, poor spray pattern, partial spray or complete stoppage.	<ol style="list-style-type: none"> 1. Flat seal is missing or damaged. 2. Spray extension or nozzle clogged. 	<ol style="list-style-type: none"> 1. Replace flat seal at extension tip (kit #3 & 5). 2. Remove nozzle and clean as described in <i>Nozzle Maintenance</i> section.

KITS, PARTS & ACCESSORIES



KEY#	PART#	DESCRIPTION
1	596948001	SHUT-OFF ASSY
2	596947401	25"WAND & SHUT-OFF KIT
	includes	25"WAND ASSY, STAINLESS STEEL SHUT-OFF
3	596947501	SHUT-OFF SERVICE KIT
	includes	POPPET SEAL WAND O-RING VALVE BODY O-RING ADJUSTABLE NOZZLE O-RING (2X) FLAT NOZZLE SEAL FILTER
4	596947901	PUMP SERVICE KIT
	includes	PISTON O-RING PUMP GASKET CHECK VALVE, VITON
5	596947601	BRASS NOZZLE KIT
	includes	BRASS ADJUSTABLE NOZZLE YELLOW FLAT FAN NOZZLE (LOW VOLUME) RED FLAT FAN NOZZLE (HIGH VOLUME) FLAT NOZZLE SEAL NOZZLE CAP NUT ANGLED NOZZLE ADAPTOR

**SERVICE KITS, PARTS & ACCESSORIES ARE AVAILABLE
BY CONTACTING YOUR NEAREST AUTHORIZED SERVICE DEALER**

VISIT REDMAX® ONLINE AT WWW.REDMAX.COM.