

Parts Manual

CZT72x / 967943501-00

Please read the operator manual carefully and make sure you understand the instructions before using the machine.

Gasoline containing a maximum of 10% ethanol (E10) is permitted for use in this machine. The use of gasoline with more than 10% ethanol (E10) will void the product warranty.

2019-04-29 CL/SR

114 05 85-27 Rev. 3  

When you need spare parts or support in service questions, warranty issues, etc., please consult the following professional:

| | | |
|---|--------|--------------|
| | | |
| This manual belongs to the machine with the manufacturing number: | Engine | Transmission |

Manufacturing Number

The machine's manufacturing number can be found on the printed plate affixed to the engine compartment.

Stated on the plate, from the top are:

- The machine's type designation (I.D.)
- The manufacturer's type number (Model)
- The machine's serial number (Serial no.)

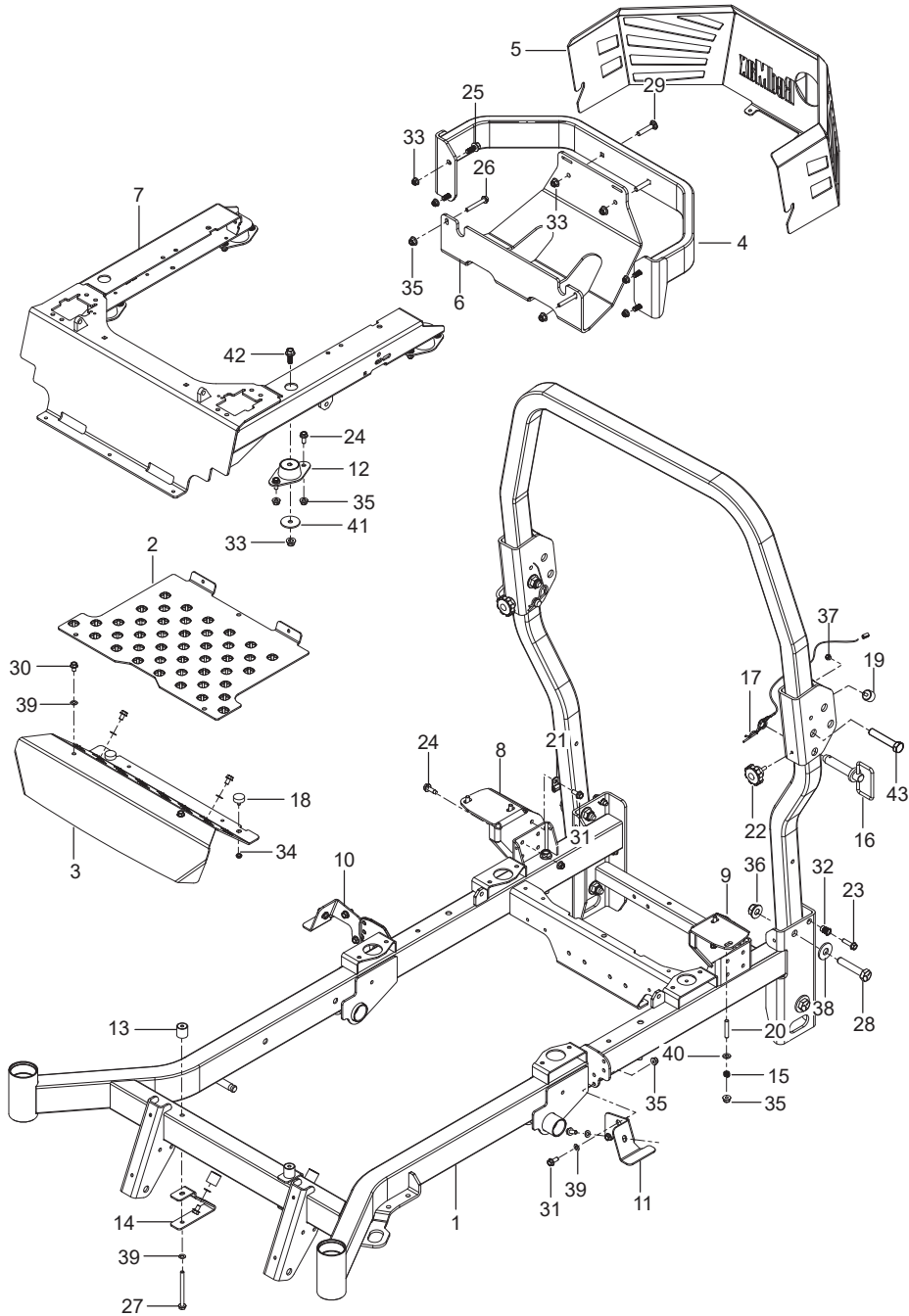
Please have the type designation and serial number available when ordering spare parts.

CONTENTS

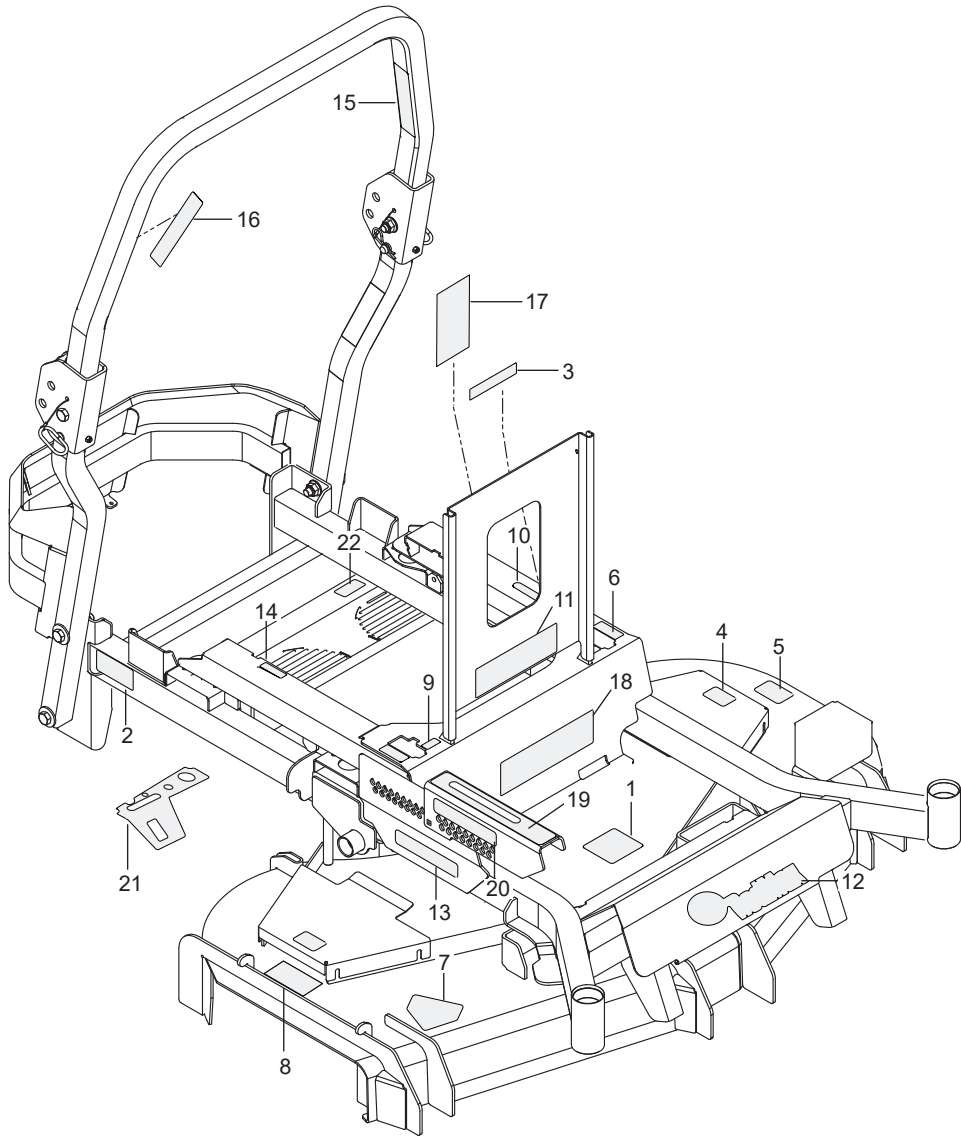
| | |
|---|----|
| FRAME | 4 |
| ENGINE MOUNTING, GUARDS AND MUFFLER | 6 |
| STEERING | 8 |
| IGNITION SYSTEM..... | 10 |
| PARKING BRAKE | 12 |
| HYDRAULIC PUMP-MOTOR..... | 14 |
| WHEELS & TIRES | 16 |
| MOWER LIFT / DECK LIFT..... | 18 |
| PEDALS | 20 |
| MOWER DECK / CUTTING DECK | 22 |
| BELT GUARDS AND PULLEYS..... | 24 |
| SEAT | 26 |
| DECALS | 28 |

Illustrations may or may not represent the actual assemblies and it is not recommended to use this manual as a guide to assemble or disassemble the mower.

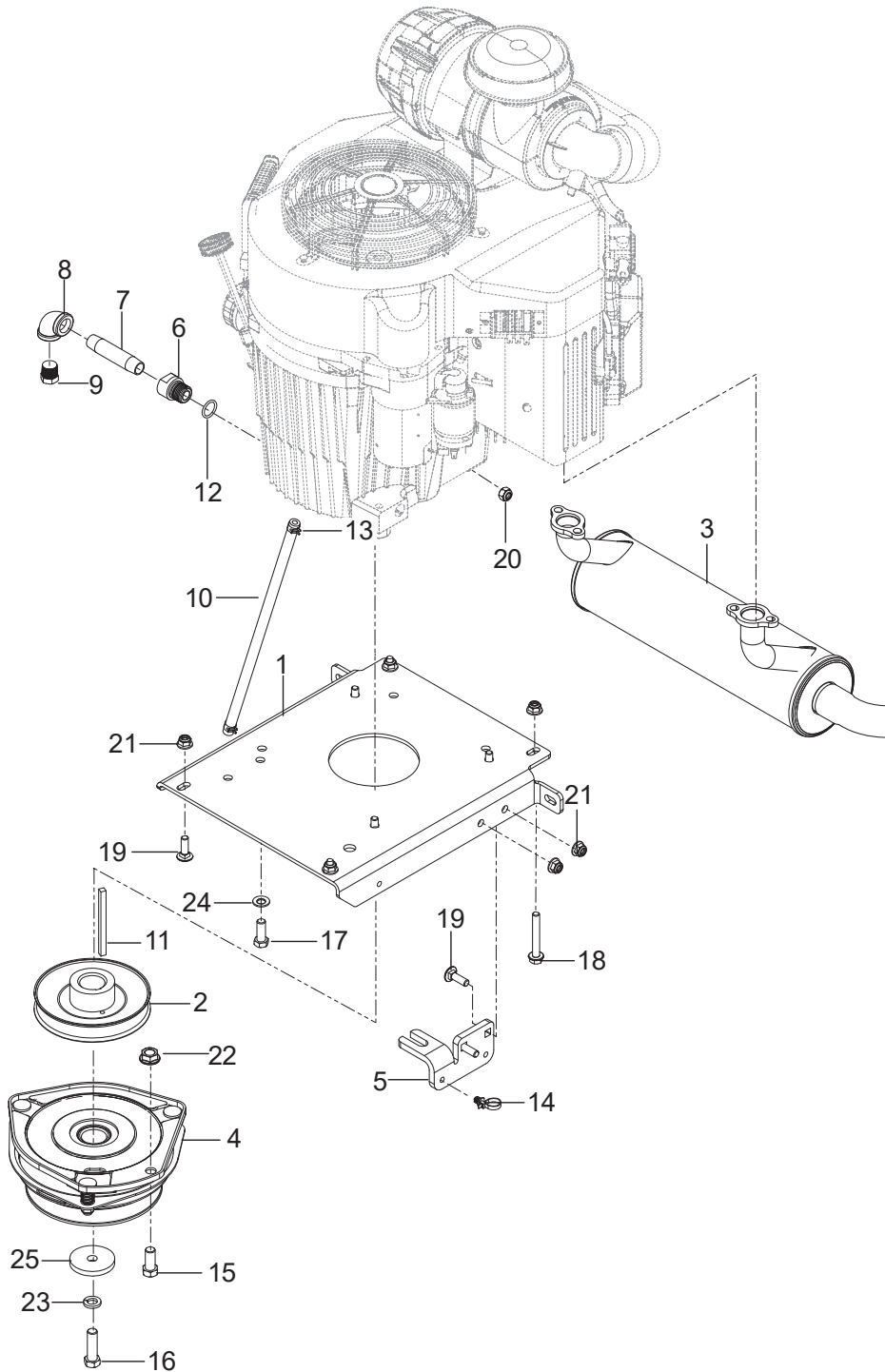
NOTE: All fasteners are Grade 5 unless otherwise specified.



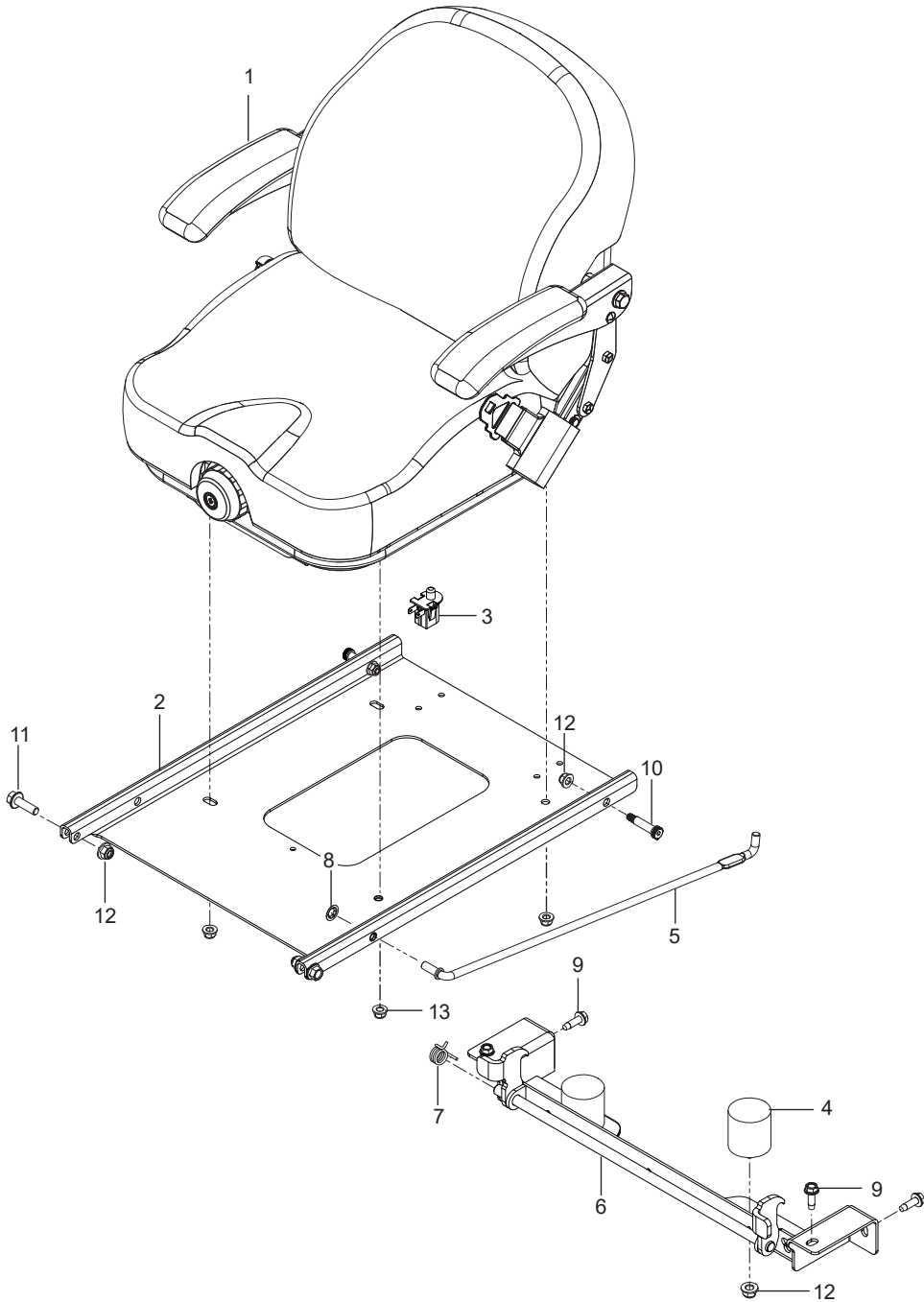
| Ref. | Part No. | Qty | Description | Kit / Assy Includes |
|------|--------------|-----|---------------------------|---------------------|
| 1 | 574 43 88-01 | 1 | Decal, Belt Route | |
| 2 | 539 10 57-44 | 1 | Decal, Belt Drive Warning | |
| 3 | 539 10 57-45 | 1 | Decal, Battery Warning | |
| 4 | 581 72 43-01 | 2 | Decal, No Step | |
| 5 | 596 34 10-01 | 1 | Decal, 72" | |
| 6 | 587 60 90-01 | 2 | Decal, Motion Control | |
| 7 | 584 90 46-01 | 1 | Decal, Blade Warning | |
| 8 | 581 72 44-01 | 1 | Decal, Deflector | |
| 9 | 501 26 12-01 | 2 | Decal, Tracking | |
| 10 | 501 26 13-01 | 1 | Decal, Park Brake | |
| 11 | 590 48 55-01 | 1 | Decal, Warning | |
| 12 | 590 79 91-01 | 1 | Decal, Logo | |
| 13 | 596 34 11-01 | 2 | Decal, Siderail, CZT72x | |
| 14 | 590 79 20-01 | 1 | Decal, Fuse | |
| 15 | 593 01 11-01 | 1 | Decal, ROPS | |
| 16 | 574 56 90-02 | 1 | Decal, ROPS Warning | |
| 17 | 574 82 59-01 | 1 | Decal, Service | |
| 18 | 596 34 12-01 | 1 | Decal, SDL, CZT72x | |
| 19 | 590 82 28-01 | 1 | Decal, Height | |
| 20 | 590 82 29-01 | 1 | Decal, Height | |
| 21 | 590 80 11-02 | 1 | Decal, Console | |
| 22 | 590 80 10-01 | 1 | Decal, Fuel | |



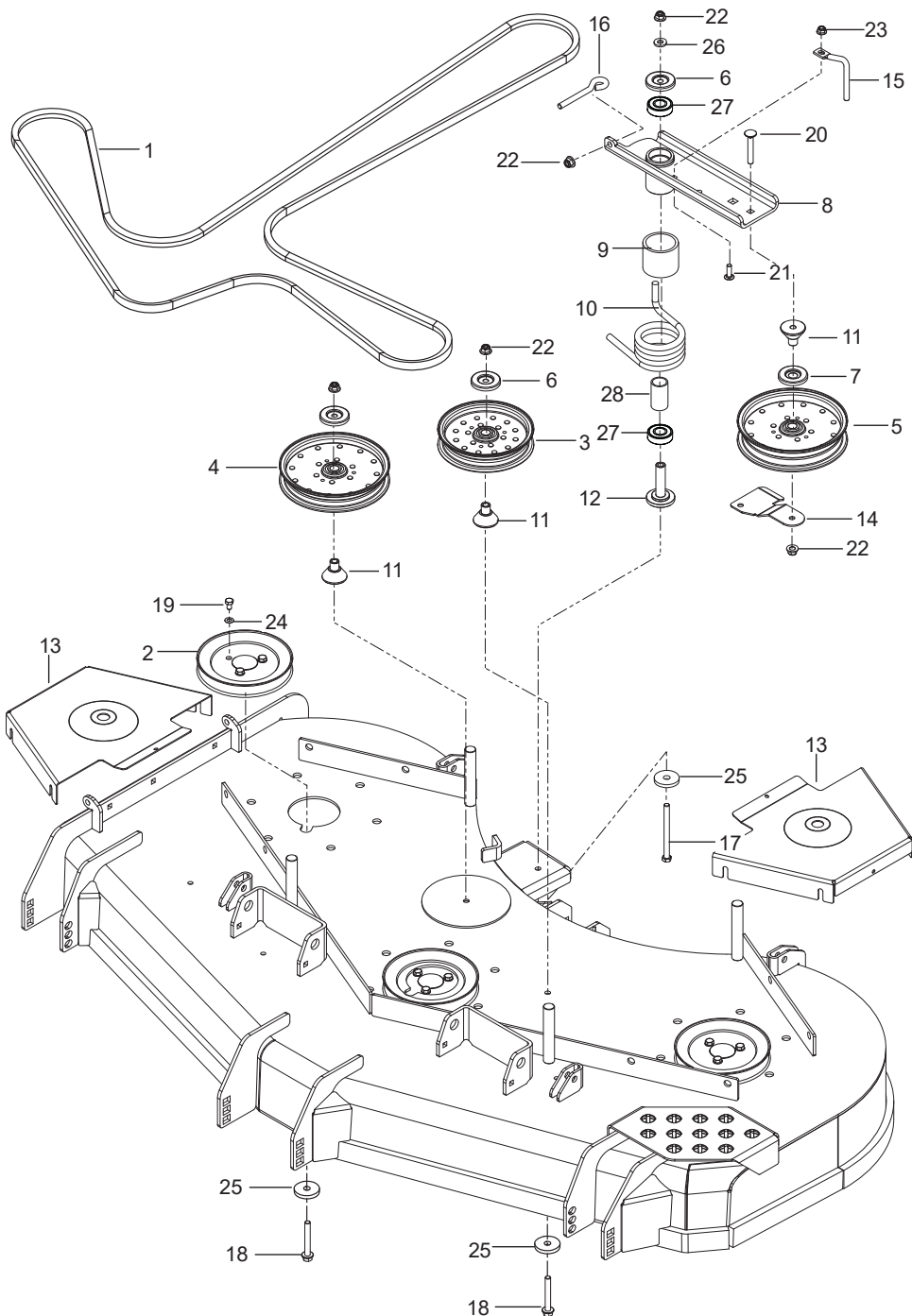
| Ref. | Part No. | Qty | Description | Kit / Assy Includes |
|------|--------------|-----|--|---------------------|
| 1 | 574 48 28-08 | 1 | Frame w/ Safety Decals Red | |
| 2 | 574 21 56-05 | 1 | Floor Pan Red | |
| 3 | 574 21 57-04 | 1 | Footrest Red | |
| 4 | 522 67 57-05 | 1 | Bumper, Rear Red | |
| 5 | 574 29 91-06 | 1 | Guard, Rear Red | |
| 6 | 574 22 86-04 | 1 | Plate, Skid Blk | |
| 7 | 577 32 77-04 | 1 | Mount, Seat Red | |
| 8 | 529 27 96-03 | 1 | Mount, Tank Right Rear | |
| 9 | 529 27 97-03 | 1 | Mount, Tank Left Rear | |
| 10 | 593 80 32-03 | 1 | Mount, Tank Right Front Blk | |
| 11 | 529 28 00-03 | 1 | Mount, Tank Left Front Blk | |
| 12 | 510 08 21-01 | 4 | Mount | |
| 13 | 510 08 32-01 | 4 | Mount, F/F Insert | |
| 14 | 510 04 03-01 | 2 | Bracket, Rest Mount | |
| 15 | 539 10 28-45 | 4 | Spring, Tank Mount | |
| 16 | 591 10 16-01 | 2 | Pin | |
| 17 | 591 10 17-01 | 2 | Pin w/ Lanyard | |
| 18 | 575 81 15-01 | 2 | Bumper 1/4-20 Stud 3/8" | |
| 19 | 522 80 14-01 | 2 | Bumper 1/4-20 Stud 5/8" | |
| 20 | 539 10 25-02 | 4 | Stud, Fuel Tank | |
| 21 | 539 10 98-67 | 1 | Clamp, Double Tube | |
| 22 | 591 34 45-01 | 2 | Knob | |
| 23 | 525 54 40-01 | 2 | Bolt 5/16-18 x 1-1/4 Hex Flange Hd Tap | |
| 24 | 874 49 05-12 | 14 | Bolt 5/16-18 x 3/4 Hex Flange Hd | |
| 25 | 525 61 28-01 | 4 | Bolt 3/8-16 x 1 Hex Flange Hd | |
| 26 | 574 23 38-01 | 4 | Bolt 5/16-18 x 2-1/4 Hex Flange Hd | |
| 27 | 539 13 17-80 | 2 | Bolt 5/16-18 x 3-3/4 Hex Flange Hd | |
| 28 | 580 75 46-01 | 6 | Bolt 5/8-11 x 3-1/2 Hex Hd | |
| 29 | 539 10 01-45 | 2 | Bolt 3/8-16 x 2 Round Hd Square Neck | |
| 30 | 539 99 08 58 | 6 | Screw 5/16-18 x 1/2 Thread Form | |
| 31 | 817 49 05-16 | 7 | Screw 5/16-18 x 1 Thread Form | |
| 32 | 539 11 10-28 | 2 | Nutsert 5/16-18 | |
| 33 | 521 99 65-01 | 8 | Nut 3/8-16 Hex Flange Nyloc | |
| 34 | 539 10 81-20 | 2 | Nut 1/4-20 Hex Thin Nyloc | |
| 35 | 539 11 28-99 | 16 | Nut 5/16-18 Hex Flange Nyloc | |
| 36 | 525 82 91-01 | 6 | Nut 5/8-11 Flange Nyloc | |
| 37 | 539 97 69-78 | 2 | Nut 1/4-20 Hex Nyloc | |
| 38 | 539 10 26-53 | 6 | Washer 5/8 Std Flat | |
| 39 | 539 10 96-00 | 6 | Washer 5/16 Disc Spring | |
| 40 | 819 11 11-16 | 4 | Washer 5/16 SAE Flat | |
| 41 | 539 11 18-97 | 4 | Washer 3/8 | |
| 42 | 525 61 28-01 | | Hhfs 3/8-16 X 1 Zd | |
| 43 | 591 17 66-01 | 2 | Hexag 5/8-11 x 1/4 Gr. 5 | |
| | Not Shown | | | |
| | 590 87 78-02 | 1 | Assembly, ROPS Blk | |



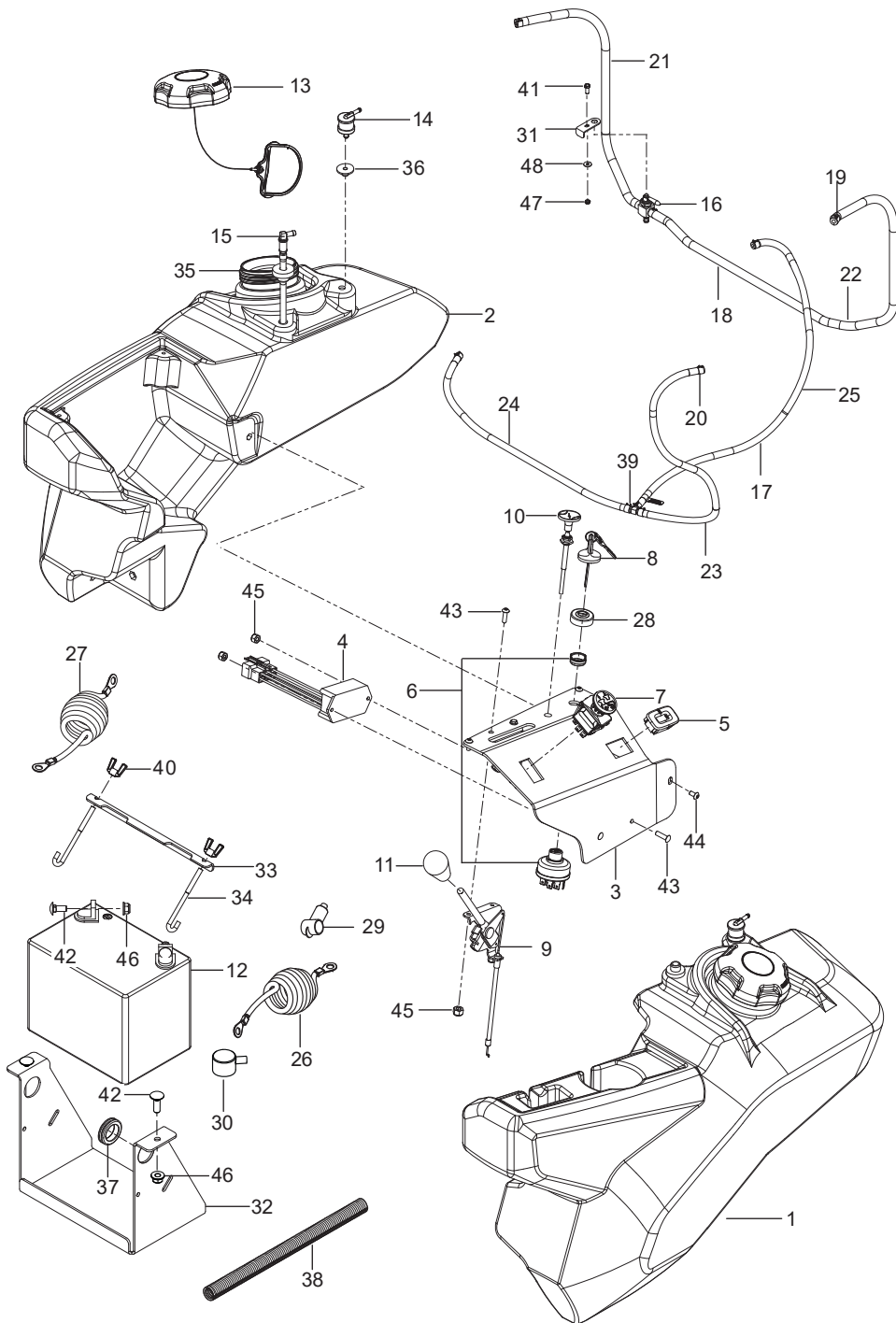
| Ref. | Part No. | Qty | Description | Kit / Assy Includes |
|------|--------------|-----|-------------------------------------|---------------------|
| 1 | 590 89 98-01 | 1 | Assembly, Seat w/ Belt | |
| 2 | 510 03 93-02 | 1 | Pan, Seat Blk | |
| 3 | 532 42 10-62 | 1 | Switch, Seat | |
| 4 | 510 28 38-01 | 2 | Bumper, Rubber | |
| 5 | 510 06 41-01 | 1 | Rod, Seat | |
| 6 | 585 85 74-02 | 1 | Latch, Seat Blk | |
| 7 | 520 28 31-01 | 1 | Spring, Torsion | |
| 8 | 539 91 38-47 | 2 | Retainer Nut 3/8 | |
| 9 | 817 49 05-16 | 4 | Screw 5/16-18 x 1 | |
| 10 | 515 99 06-01 | 2 | Bolt 3/8 x 1-1/4 - 5/16-18 Shoulder | |
| 11 | 525 83 42-01 | 2 | Bolt 3/8 -16 x 1-1/4 Hex Flange Hd | |
| 12 | 521 99 65-01 | 6 | Nut 3/8 -16 Hex Flange Nyloc | |
| 13 | 539 11 28-99 | 4 | Nut 5/16-18 Hex Flange Nyloc | |



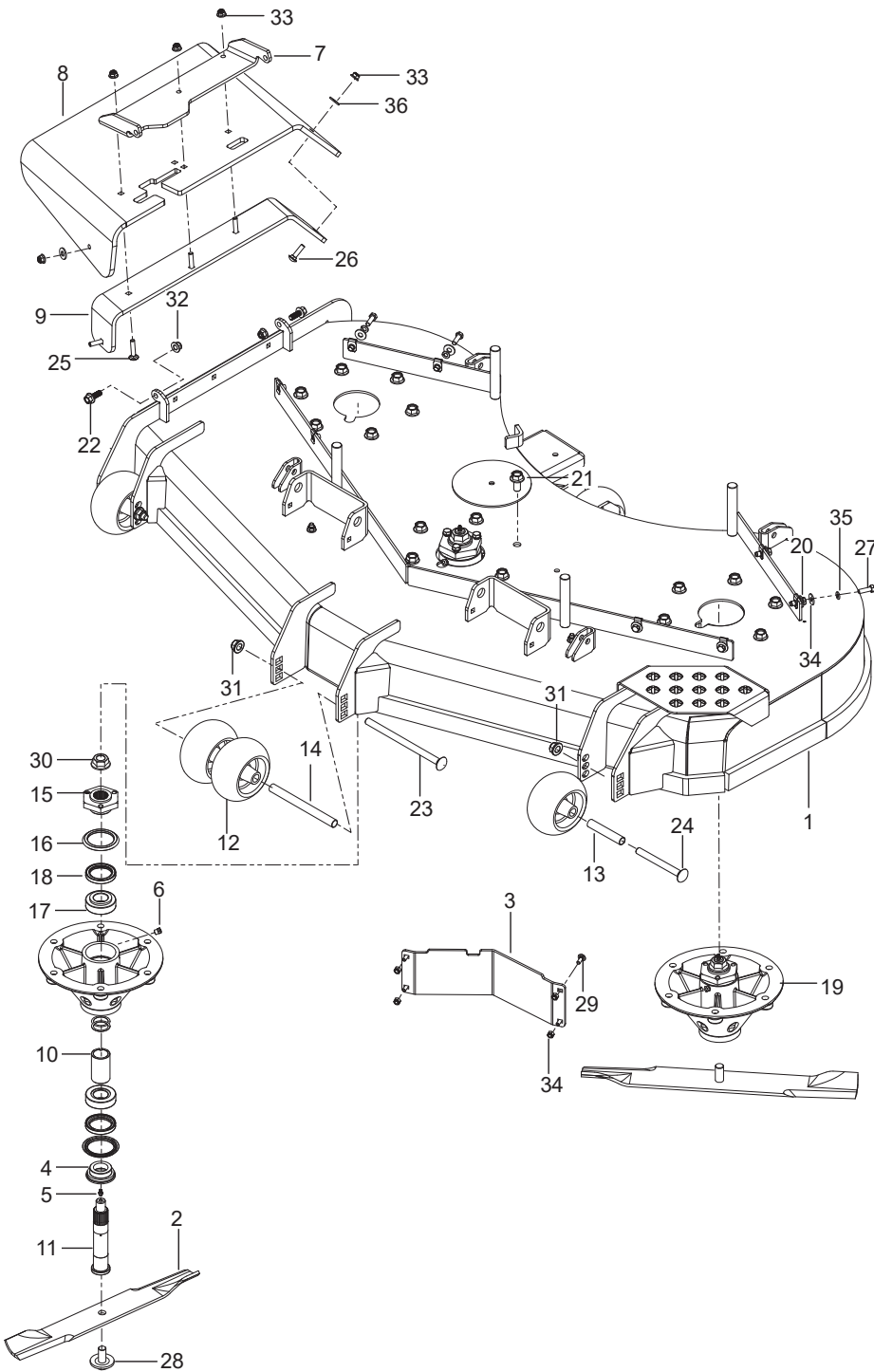
| Ref. | Part No. | Qty | Description | Kit / Assy Includes |
|-----------|--------------|-----|--|---------------------|
| 1 | 510 00 46-02 | 1 | Plate, Engine | |
| 2 | 510 01 98-01 | 1 | Pulley, Engine | |
| 3 | 589 62 85-01 | 1 | Muffler | |
| 4 | 525 74 95-01 | 1 | Clutch, GT 3.5 | |
| 5 | 522 67 67-02 | 1 | Stop, Clutch | |
| 6 | 539 11 96-80 | 1 | Adaptor, Oil Drain | |
| 7 | 539 11 89-11 | 2 | Pipe 3/8 NPT x 3" | |
| 8 | 539 10 50-72 | 1 | Elbow 90O | |
| 9 | 522 83 70-01 | 1 | Plug 3/8 NPTF Drain | |
| 10 | 587 04 48-14 | 1 | Fuel Line 14" | |
| 11 | 525 74 99-01 | 1 | Key 1/4 Sq x 3-1/2 | |
| 12 | 539 10 96-18 | 1 | O-Ring | |
| 13 | 539 91 22-22 | 2 | Clamp, Hose Blk | |
| 14 | 505 28 00-01 | 1 | Tie Wrap w/ Clip | |
| 15 | 874 78 07-16 | 1 | Bolt 7/16-14 x 1 Hex Hd | |
| 16 | 581 33 28-01 | 1 | Bolt 7/16-20 x 1-1/2 Hex Hd | |
| 17 | 539 99 05-63 | 4 | Bolt 3/8-16 x 1 Hex Hd | |
| 18 | 574 23 38-01 | 2 | Bolt 5/16-18 x 2-1/4 Hex Flange Hd | |
| 19 | 539 99 02-08 | 3 | Bolt 5/16-18 x 1 Round Hd Square Neck | |
| 20 | 532 18 43-62 | 1 | Nut M8 x 1.25 Nyloc | |
| 21 | 539 11 28-99 | 8 | Nut 5/16-18 Hex Flange Nyloc | |
| 22 | 539 10 25-82 | 1 | Nut 7/16-14 Hex Whiz Lock | |
| 23 | 539 99 02-47 | 1 | Washer 7/16 Slotted Lock | |
| 24 | 539 10 25-93 | 4 | Washer 3/8 Spring | |
| 25 | 539 12 56-26 | 1 | Washer, Heavy | |
| Not Shown | | | | |
| | 525 55 42-01 | 1 | Engine Harness, Kaw | |
| | 574 82 58-01 | 1 | Kit, Spark Arrestor | |
| | 586 83 98-01 | 2 | Gasket, Exhaust | |
| | ----- | 1 | "Engine, Kawasaki FX921 31 Hp For Engine Replacement Parts, See a Kawasaki Dealer" | |



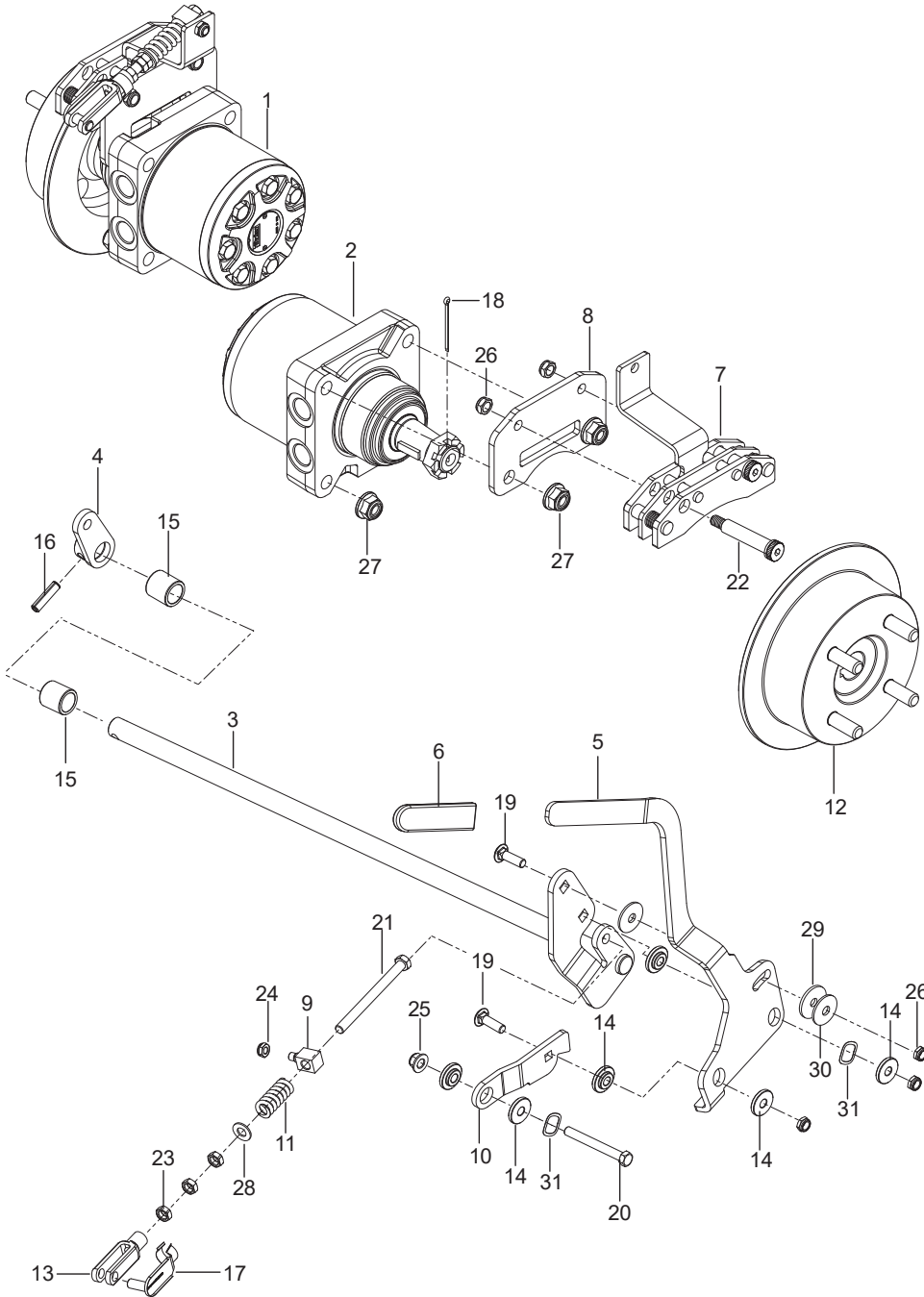
| Ref. | Part No. | Qty | Description | Kit / Assy Includes |
|------|--------------|-----|---|---------------------|
| 1 | 516 02 03-01 | 2 | Assembly, Dampener | |
| 2 | 525 44 80-01 | 1 | Linkage, Seat Strut RH | |
| 3 | 539 11 37-92 | 1 | Switch, Brake (3-Pole) | |
| 4 | 532 10 95-53 | 2 | Switch, Interlock | |
| 5 | 539 13 15-18 | 4 | Bearing, Flange | |
| 6 | 586 73 72-02 | 2 | Bracket, Control | |
| 7 | 501 74 11-01 | 2 | Bracket, Dampener | |
| 8 | 574 26 94-01 | 2 | Lever, Motion | |
| 9 | 577 04 24-03 | 1 | Lever W/ Grip Right | |
| 10 | 577 04 23-03 | 1 | Lever W/ Grip Left | |
| 11 | 576 14 03-02 | 2 | Lever, Control | |
| 12 | 539 10 91-49 | 4 | Turnbuckle | |
| 13 | 539 10 25-90 | 4 | Ball End | |
| 14 | 539 10 28-45 | 1 | Spring | |
| 15 | 539 02 00-35 | 1 | Spring | |
| 16 | 576 85 03-01 | 1 | Spring | |
| 17 | 577 25 24-01 | 2 | Spacer, Pivot | |
| 18 | 511 59 49-01 | 1 | Bushing 1/4 Flange | |
| 19 | 511 59 50-01 | 1 | Link, Switch | |
| 20 | 539 11 06-07 | 2 | Ball Stud 10Mm | |
| 21 | 532 13 08-94 | 2 | Grip, Lever, RT | |
| 22 | 575 81 15-01 | 2 | Bumper | |
| 23 | 539 13 17-99 | 1 | Knob | |
| 24 | 522 55 92-01 | 2 | Linkage, Control Front | |
| 25 | 522 84 28-01 | 2 | Linkage, Control Rear | |
| 26 | 581 43 75-01 | 2 | Block, Tracking | |
| 27 | 581 22 30-01 | 1 | Plate, Nut | |
| 28 | 539 97 69-88 | 4 | Hairpin Cotter | |
| 29 | 539 10 47-63 | 4 | Retainer, U Type | |
| 30 | 539 11 56-20 | 1 | Bolt 1/4-20 x 3/4 Round Hd Square Neck Gr 2 | |
| 31 | 539 99 03-16 | 2 | Bolt 5/16-18 x 3/4 Round Hd Square Neck | |
| 32 | 525 54 40-01 | 4 | Bolt 5/16-18 x 1-1/4 Hex Flange Tap | |
| 33 | 874 78-08-44 | 2 | Bolt 1/2-13 x 2-3/4 Hex Flange Hd | |
| 34 | 525 61 28-01 | 4 | Bolt 3/8-16 x 1 Hex Flange Hd | |
| 35 | 874 78 05-20 | 1 | Bolt 5/16-18 x 1-1/4 Hex Hd Tap | |
| 36 | 874 49 05-12 | 4 | Bolt 5/16-18 x 3/4 Hex Flange Hd | |
| 37 | 576 85 04-02 | 2 | Screw 5/16-18 x 1-3/4 Button Hd | |
| 38 | 574 82 27-01 | 6 | Screw 10-24 x 3/4 Socket Hd | |
| 39 | 539 11 28-99 | 12 | Nut 5/16-18 Hex Flange Nyloc | |
| 40 | 539 10 22-34 | 4 | Nut 1/4 Push | |
| 41 | 539 10 81-20 | 4 | Nut 1/4-20 Hex Thin Nyloc | |
| 42 | 539 10 80-10 | 2 | Nut 1/2-13 Hex Jam Nyloc | |
| 43 | 539 91 38-47 | 2 | Nut 3/8 Retainer | |
| 44 | 873 80 05-00 | 2 | Nut 5/16-18 Hex Nyloc | |
| 46 | 539 10 87-32 | 4 | Nut 3/8-24 Hex Jam | |
| 47 | 539 99 01-87 | 2 | Washer 5/16 Slotted Lock | |
| 48 | 819 13 13-16 | 4 | Washer 3/8 SAE Flat | |
| 49 | 539 99 06-92 | 4 | Washer 5/16 Std Flat | |
| 50 | 819 11 11-16 | 3 | Washer 5/16 SAE Flat | |
| 51 | 525 44 80-02 | 2 | Linkage, Seat Strut LH | |



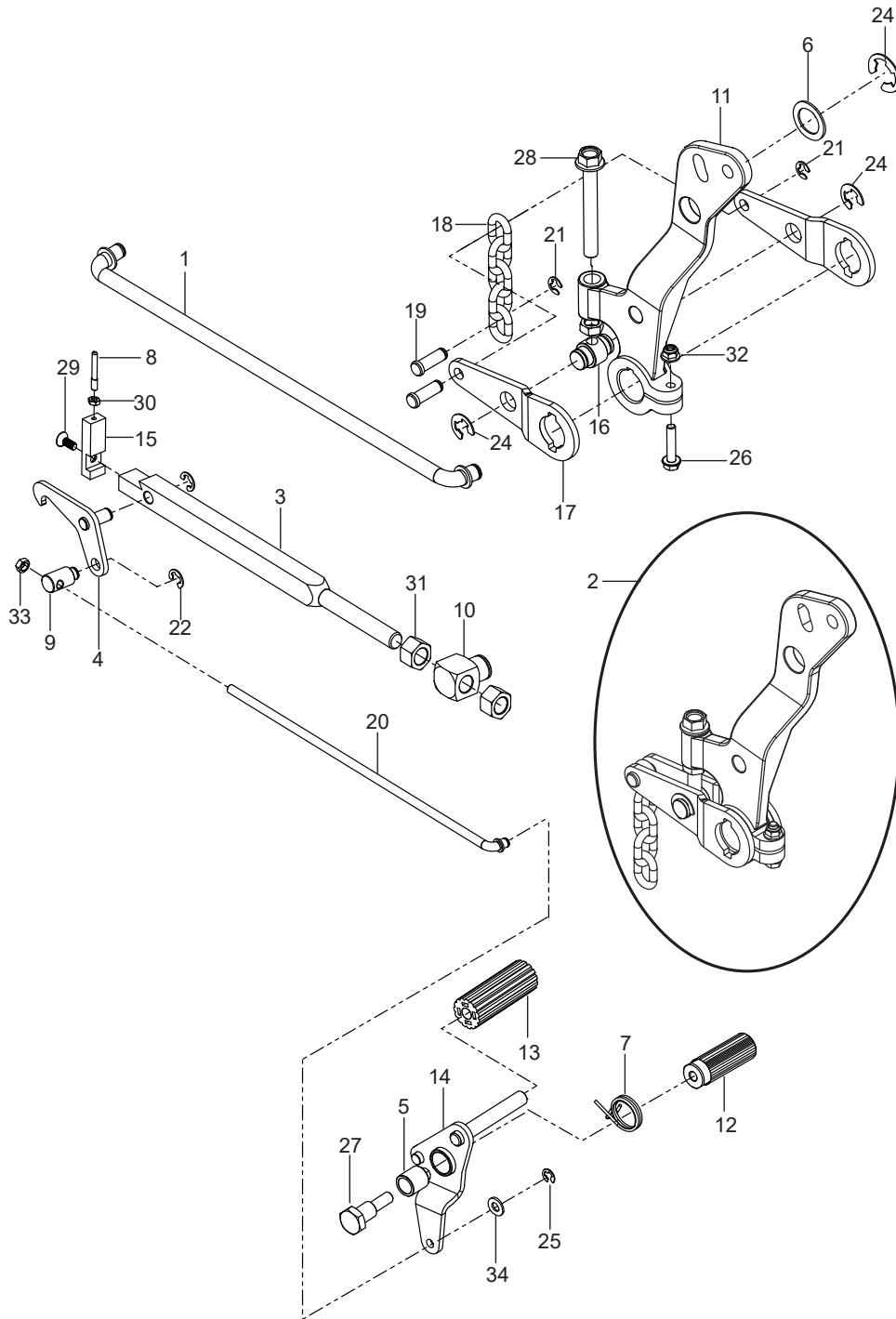
| Ref. | Part No. | Qty | Description | Kit / Assy Includes |
|-----------|--------------|-----|---|---------------------|
| 1 | 588 12 76-10 | 1 | Deck w/ Safety Decals | |
| 2 | 539 10 54-76 | 3 | Blade, 25" | |
| 3 | 574 22 18-02 | 1 | Baffle, Flow Diverter | |
| 4 | 580 94 25-01 | 3 | Carrier | |
| 5 | 539 97 69-98 | 3 | Zerk | |
| 6 | 539 97 73-26 | 3 | Zerk | |
| 7 | 574 19 70-02 | 1 | Bracket, Chute Pivot | |
| 8 | 525 48 57-01 | 1 | Chute, Discharge | |
| 9 | 525 48 59-02 | 1 | Support, Chute Bracket | |
| 10 | 580 94 29-01 | 3 | Spacer | |
| 11 | 580 94 21-01 | 3 | Shaft, Spindle | |
| 12 | 574 16 96-01 | 5 | Roller, Gauge | |
| 13 | 574 19 64-01 | 3 | Tube, Roller Axle | |
| 14 | 574 19 65-01 | 1 | Tube, Roller Axle Long | |
| 15 | 580 94 22-01 | 3 | Hub | |
| 16 | 580 94 27-01 | 6 | V-Ring | |
| 17 | 580 94 18-01 | 6 | Bearing | |
| 18 | 580 84 26-01 | 6 | Seal, Shaft | |
| 19 | 580 94 33-06 | 3 | Assembly, Spindle | |
| 20 | 539 10 47-63 | 8 | Retainer, U Type | |
| 21 | 574 21 06-01 | 18 | Bolt 1/2-13 x 1 Hex Flange Hd | |
| 22 | 525 61 28-01 | 2 | Bolt 3/8-16 x 1 Hex Flange Hd | |
| 23 | 872 14 08-64 | 1 | Bolt 1/2-13 x 8 Round Hd Square Neck | |
| 24 | 510 02 23-01 | 3 | Bolt 1/2-13 x 4-3/4 Round Hd Square Neck | |
| 25 | 539 10 29-33 | 3 | Bolt 5/16-18 x 1-1/2 Round Hd Square Neck | |
| 26 | 539 10 04-72 | 2 | Bolt 5/16-18 x 1-1/4 Round Hd Square Neck | |
| 27 | 539 99 02-09 | 8 | Bolt 5/16-18 x 1 Hex Hd | |
| 28 | 539 11 90-07 | 3 | Bolt, Blade | |
| 29 | 539 11 56-20 | 4 | Bolt 1/4-20 x 3/4 Round Hd Square Neck | |
| 30 | 539 13 06-53 | 3 | Nut 3/4-16 Hex Flange Hd | |
| 31 | 521 99 11-01 | 3 | Nut 1/2-13 Hex Flange Nyloc | |
| 32 | 521 99 65-01 | 1 | Nut 3/8-16 Hex Flange Nyloc | |
| 33 | 539 11 28-99 | 5 | Nut 5/16-18 Hex Flange Nyloc | |
| 34 | 539 97 69-78 | 4 | Nut 1/4-20 Hex Nyloc | |
| 35 | 539 99 01-87 | 8 | Washer 5/16 Slotted Lock | |
| 36 | 819 12 14-14 | 10 | Washer 5/16 Std Flat | |
| NOT SHOWN | | | | |
| | 525 30 70-01 | 3 | Blade, High Lift 19" | |
| | 574 48 11-01 | 3 | Blade, Low Lift 19" | |
| | 525 52 59-01 | 3 | Blade, Gator 19" | |
| | 574 86 09-01 | 3 | Blade, Wavy Rev Lift 19" | |
| | | | Kit, Bearing Assembly | |
| | 574 75 42-01 | 1 | <i>When replacing the Spindle bearings, order the Bearing Assembly Kit to assure proper installation.</i> | |



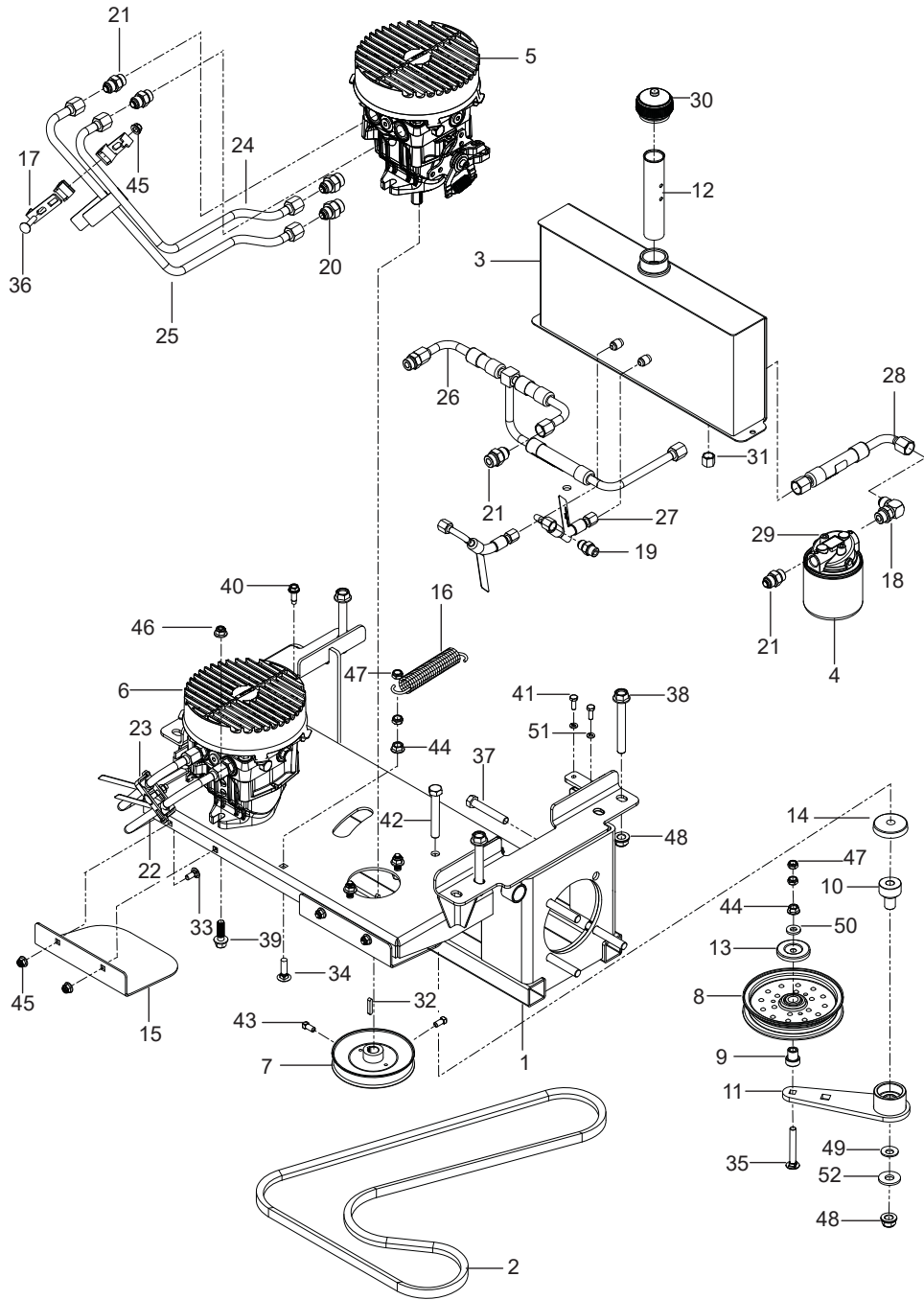
| Ref. | Part No. | Qty | Description | Kit / Assy Includes |
|-----------|--------------|-----|---|---------------------|
| 1 | 589 99 73-02 | 1 | Assembly, Tank Left Blk | 13, 14,15, 35, 36 |
| 2 | 590 02 60-02 | 1 | Assembly, Tank Right Blk | 13, 14,15, 35, 36 |
| 3 | 529 28 02-03 | 1 | Panel, Control Blk | |
| 4 | 574 51 40-01 | 1 | Timer, Seat | |
| 5 | 586 16 18-01 | 1 | Meter, Service | |
| 6 | 574 45 54-01 | 1 | Switch, Ignition | |
| 7 | 582 10 76-02 | 1 | Switch, Blade | |
| 8 | 574 45 55-01 | 1 | Key, Ignition | |
| 9 | 574 20 70-02 | 1 | Control, Throttle | |
| 10 | 574 20 69-01 | 1 | Cable, Choke | |
| 11 | 539 13 26-24 | 1 | Knob | |
| 12 | 539 10 24-63 | 1 | Battery | |
| 13 | 575 01 81-03 | 2 | Cap w/ Tether, Fuel | |
| 14 | 576 61 81-01 | 2 | Valve, Fuel Check | |
| 15 | 525 86 54-01 | 2 | Fitting, Fuel | |
| 16 | 539 10 26-79 | 1 | Valve, Fuel | |
| 17 | 587 59 34-01 | 1 | Assembly, Vapor Line | 20, 23, 24, 25, 39 |
| 18 | 577 15 05-01 | 1 | Assembly, Fuel Line | 16, 19, 21, 22 |
| 19 | 539 91 22-22 | 4 | Clamp, Hose | |
| 20 | 575 43 65-01 | 6 | Clamp, Hose | |
| 21 | 587 04 48-22 | 1 | Hose 1/4 x 22" | |
| 22 | 587 04 48-38 | 1 | Hose 1/4 x 38" | |
| 23 | 587 04 45-37 | 1 | Hose 3/16 x 37" | |
| 24 | 587 04 45-21 | 1 | Hose 3/16 x 21" | |
| 25 | 587 04 45-30 | 1 | Hose 3/16 30" | |
| 26 | 522 71 87-01 | 1 | Cable, Positive | |
| 27 | 522 71 07-01 | 1 | Cable, Negative | |
| 28 | 539 10 31-78 | 1 | Cap, Ignition Switch | |
| 29 | 539 10 27-59 | 2 | Insulator | |
| 30 | 532 43 59-35 | 1 | Cover, Battery Terminal | |
| 31 | 587 18 14-04 | 1 | Bracket, Valve | |
| 32 | 510 02 99-02 | 1 | Bracket, Battery Blk | |
| 33 | 593 63 44-04 | 1 | Bracket, Battery Mount | |
| 34 | 510 06 40-01 | 2 | J Hook | |
| 35 | 539 10 52-45 | 2 | Grommet, Rubber | |
| 36 | 576 61 81-01 | 2 | Grommet, Check Valve | |
| 37 | 539 10 59-74 | 1 | Grommet | |
| 38 | 579 57 97-01 | 1 | Loom 5/8 Split | |
| 39 | 574 20 66-02 | 1 | Tee 3/16 Fuel Line | |
| 40 | 539 99 09-97 | 2 | Wingnut 1/4-20 Nyloc | |
| 41 | 539 99 05-80 | 1 | Bolt 1/4-20 x 3/4 Hex Head | |
| 42 | 872 14 05-06 | 4 | Bolt 5/16-18 x 3/4 Round Head Square Neck | |
| 43 | 574 82 27-01 | 4 | Screw 10-24 x 3/4 Socket Head | |
| 44 | 539 11 43-41 | 3 | Screw 10-24 x 3/8 Socket Head | |
| 45 | 539 97 69-77 | 4 | Nut 10-24 Hex Nyloc | |
| 46 | 539 11 28-99 | 4 | Nut 5/16-18 Hex Flange Nyloc | |
| 47 | 539 10 81-20 | 1 | Nut 1/4-20 Hex Thin Nyloc | |
| 48 | 539 99 05-98 | 1 | Washer 1/4 Flat | |
| NOT SHOWN | | | | |
| | 589 67 01-01 | 1 | Harness,Wiring | |
| | 532 40 96-15 | 2 | Relay | |



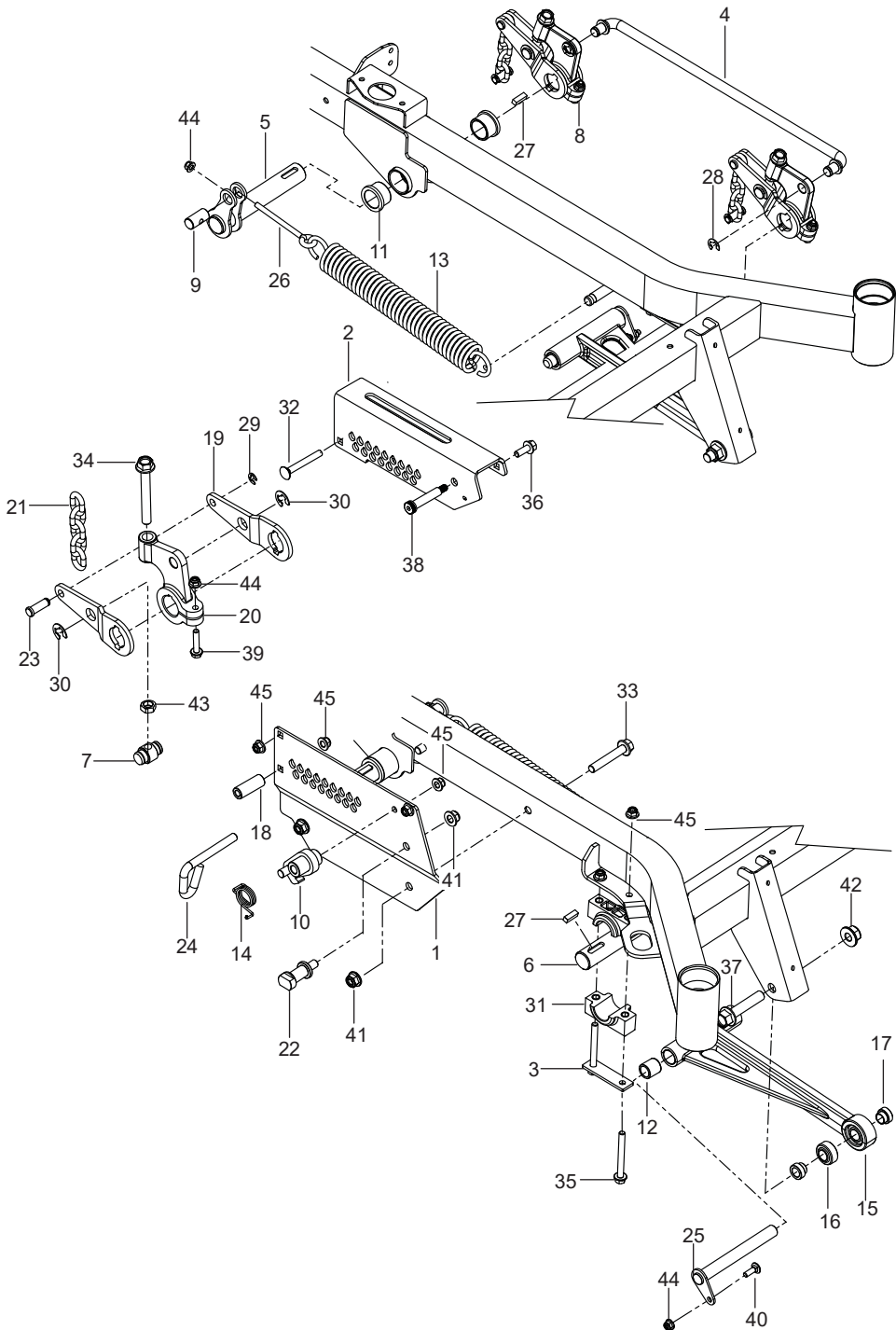
| Ref. | Part No. | Qty | Description | Kit / Assy Includes |
|------|--------------|-----|------------------------------------|---------------------|
| 1 | 510 08 98-01 | 1 | Rod, Lift | |
| 2 | 525 46 55-02 | 1 | Assembly, Deck Lift Lever | 11, 16, 17, 18, 19, |
| 3 | 510 40 63-01 | 1 | Bar, Height | |
| 4 | 510 40 72-01 | 1 | Latch, Height | |
| 5 | 510 08 92-01 | 1 | Bushing, Sleeve 3/4 x 1 | |
| 6 | 539 91 65-61 | 1 | Bushing | |
| 7 | 510 37 67-01 | 1 | Spring, Torsion | |
| 8 | 510 40 66-01 | 1 | Link, Indicator | |
| 9 | 510 40 75-01 | 1 | Swivel, Height Latch | |
| 10 | 510 40 64-01 | 1 | Swivel, Height Bar | |
| 11 | 510 02 25-02 | 1 | Lever, Deck Lift | |
| 12 | 510 40 83-01 | 1 | Pedal, Deck Height | |
| 13 | 510 08 95-01 | 1 | Pad, Foot Pedal | |
| 14 | 510 40 78-01 | 1 | Release, Pedal | |
| 15 | 510 40 65-01 | 1 | Cap, Height Bar | |
| 16 | 510 02 36-01 | 1 | Trunion, Lift Shaft | |
| 17 | 510 41 00-02 | 1 | Arm, Lift | |
| 18 | 539 10 26-41 | 1 | Lift Chain | |
| 19 | 510 09 01-01 | 2 | Pin 7/16 Clevis | |
| 20 | 510 40 76-01 | 1 | Rod, Height Latch | |
| 21 | 522 70 52-01 | 4 | E-Ring 7/16 | |
| 22 | 539 10 19-49 | 2 | E-Ring 1/2 | |
| 24 | 539 10 24-54 | 2 | E-Ring 3/4 | |
| 25 | 539 99 08-70 | 1 | E-Ring 3/8 | |
| 26 | 525 46 54-01 | 1 | Bolt 5/16-18 x 1-1/2 Hex Flange Hd | |
| 27 | 510 40 82-01 | 1 | Bolt, Shoulder | |
| 28 | 525 46 57-01 | 1 | Bolt 1/2-13 x 4 Hex Flange Hd | |
| 29 | 522 70 56-01 | 1 | Screw 5/16-18 x 3/4 Hex Socket | |
| 30 | 539 99 11-12 | 1 | Nut 1/4-20 Hex Jam | |
| 31 | 539 10 86-77 | 2 | Nut 3/4-10 Hex | |
| 32 | 539 11 28-99 | 1 | Nut 5/16-18 Hex Flange Nyloc | |
| 33 | 539 10 87-32 | 1 | Nut 3/8-24 Hex Jam | |
| 34 | 539 99 01-22 | 1 | Washer 3/8 SAE Flat | |



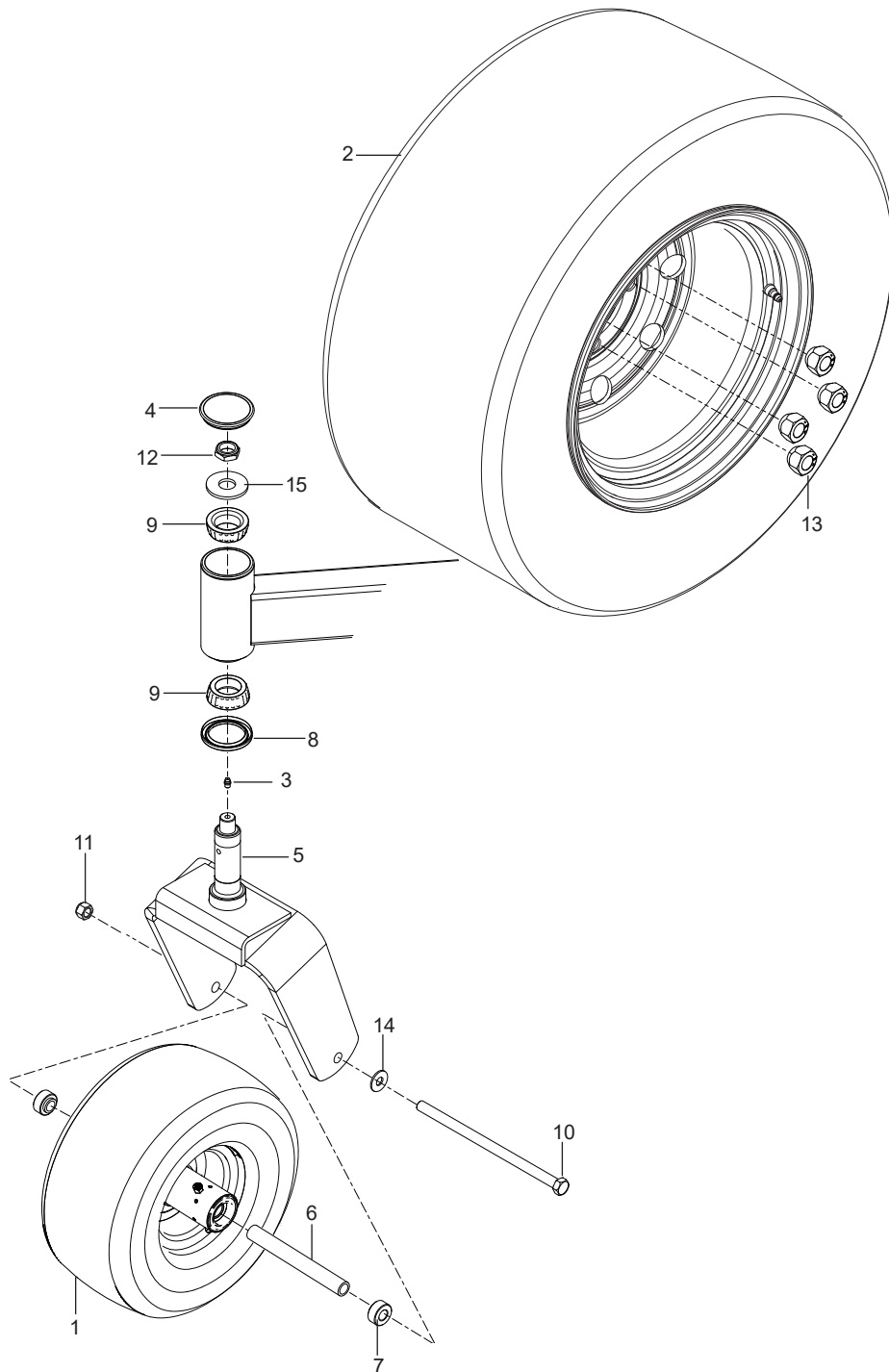
| Ref. | Part No. | Qty | Description | Kit / Assy Includes |
|------|--------------|-----|--|---------------------|
| 1 | 574 80 52-02 | 1 | Motor, Right | |
| 2 | 574 80 52-01 | 1 | Motor, Left | |
| 3 | 525 85 12-01 | 1 | Shaft, Brake | |
| 4 | 510 02 59-01 | 1 | Arm, Brake | |
| 5 | 515 98 00-02 | 1 | Lever, Brake | |
| 6 | 539 97 65-26 | 1 | Grip, Lever | |
| 7 | 539 13 30-47 | 2 | Caliper | |
| 8 | 525 85 16-01 | 2 | Plate, Caliper | |
| 9 | 525 85 14-01 | 1 | Swivel, Brake | |
| 10 | 515 98 03-01 | 1 | Link, Follower | |
| 11 | 539 11 39-52 | 1 | Spring | |
| 12 | 525 84 87-01 | 2 | Hub, Disc Brake w/ Studs | |
| 13 | 539 97 74-65 | 1 | Yoke | |
| 14 | 539 13 21-61 | 6 | Bushing, Brake | |
| 15 | 510 08 92-01 | 2 | Bushing, Sleeve 3/4 x 1 | |
| 16 | 539 11 06-31 | 1 | Roll Pin 5/16 Dia. | |
| 17 | 522 70 59-01 | 1 | Pin 3/8 Clevis Spring | |
| 18 | 539 10 28-89 | 2 | Cotter Pin 1/8 x 2 | |
| 19 | 872 14 06-10 | 3 | Bolt 3/8-16 x 1-1/4 Round Hd Square Neck | |
| 20 | 539 92 34-63 | 1 | Bolt 3/8-16 x 3-1/4 Hex Flange Hd | |
| 21 | 539 10 49-84 | 1 | Bolt 3/8-24 x 4-1/2 Hex Flange Hd | |
| 22 | 516 03 55-01 | 4 | Bolt 1/2 x 2-1/4, 3/8-16 Shoulder | |
| 23 | 539 10 87-32 | 3 | Nut 3/8-24 Hex Jam | |
| 24 | 539 11 56-17 | 1 | Nut 5/16-18 Hex Nyloc | |
| 25 | 521 99 65-01 | 1 | Nut 3/8-16 Hex Flange Nyloc | |
| 26 | 539 20 02-82 | 9 | Nut 3/8-16 Hex Jam Nyloc | |
| 27 | 521 99 11-01 | 8 | Nut 1/2-13 Hex Flange Nyloc | |
| 28 | 819 13 13-16 | 1 | Washer 3/8 SAE Flat | |
| 29 | 525 49 09-01 | 2 | Washer, Friction | |
| 30 | 539 91 20-63 | 1 | Washer, Cone | |
| 31 | 539 13 30-07 | 2 | Washer, Wave | |



| Ref. | Part No. | Qty | Description | Kit / Assy Includes |
|------|--------------|-----|---|---|
| 1 | 510 40 85-05 | 1 | Plate, Inner Height Red | |
| 2 | 510 40 86-05 | 1 | Plate, Outer Height Red | |
| 3 | 593 63 41-02 | 2 | Plate, Pillow Block | |
| 4 | 510 08 98-01 | 1 | Rod, Lift | |
| 5 | 510 41 07-03 | 2 | Shaft, Lift Rear | |
| 6 | 510 40 96-02 | 1 | Shaft, Lift Front | |
| 7 | 510 02 36-01 | 3 | Trunion, Lift Shaft | |
| 8 | 525 46 55-01 | 3 | Assembly, Deck Lift Crank | 7, 19, 20, 21, 23, ,29, 30, 34, 39,43, 44 |
| 9 | 510 41 23-01 | 2 | Pivot, Spring | |
| 10 | 510 40 68-01 | 1 | Latch, Transport | |
| 11 | 510 08 94-01 | 4 | Bushing, Flanged | |
| 12 | 510 08 92-01 | 2 | Bushing, Sleeve 3/4 x 1 | |
| 13 | 510 02 92-01 | 2 | Spring, Extension | |
| 14 | 510 37 66-01 | 1 | Spring, Torsion | |
| 15 | 510 10 65-01 | 2 | Assembly, Strut | |
| 16 | 510 08 38-01 | 1 | Swivel 3/4 Balljoint | |
| 17 | 510 36 25-01 | 4 | Spacer, Strut | |
| 18 | 510 40 84-01 | 1 | Spacer, Height Plate | |
| 19 | 510 41 00-02 | 3 | Arm, Lift | |
| 20 | 510 02 25-01 | 1 | Arm, Cast Lift | |
| 21 | 539 10 26-41 | 3 | Lift Chain | |
| 22 | 510 40 67-01 | 1 | Guide, Height Bar | |
| 23 | 510 09 01-01 | 6 | Pin 7/16 Clevis | |
| 24 | 510 01 65-01 | 1 | Pin, Height | |
| 25 | 515 98 82-01 | 2 | Pin, Strut | |
| 26 | 539 12 09-93 | 2 | Eyebolt 4-1/2 | |
| 27 | 525 82 25-01 | 4 | Key 5/16 Square x 1 | |
| 28 | 539 10 50-69 | 2 | E-Ring 5/8 | |
| 29 | 522 70 52-01 | 4 | E-Ring 7/16 | |
| 30 | 539 10 24-54 | 6 | E-Ring 3/4 | |
| 31 | 510 02 39-02 | 4 | Pillow Block | |
| 32 | 539 12 27-28 | 1 | Bolt 3/8-16 x 3 Round Hd Square Neck Gr 2 | |
| 33 | 874 49 08-48 | 2 | Bolt 1/2-13 x 3 Hex Flange Hd | |
| 34 | 525 46 57-01 | 3 | Bolt 1/2-13 x 4 Hex Flange Hd | |
| 35 | 874 49 06-52 | 4 | Bolt 3/8-16 x 3-1/2 Hex Flange Hd | |
| 36 | 525 61 28-01 | 2 | Bolt 3/8-16 x 1 Hex Flange Hd | |
| 37 | 874 45 10-48 | 2 | Bolt 5/8-11 x 3 Hex Flange Hd Grade 8 | |
| 38 | 516 03 55-01 | 1 | Bolt 1/2 x 2-1/4 3/8-16 Shoulder | |
| 39 | 525 46 54-01 | 1 | Bolt 5/16-18 x 1-1/2 Hex Flange Hd | |
| 40 | 539 99 02-08 | 2 | Bolt 5/16-18 x 1 Round Hd Square NeckZD | |
| 41 | 521 99 11-01 | 3 | Nut 1/2-13 Hex Flange Nyloc | |
| 42 | 525 82 91-01 | 2 | Nut 5/8-11 Flange Nyloc | |
| 43 | 539 99 06-25 | 4 | Nut 1/2-13 Hex Jam | |
| 44 | 539 11 28-99 | 7 | Nut 5/16-18 Hex Flange Nyloc | |
| 45 | 521 99 65-01 | 4 | Nut 3/8-16 Hex Flange Nyloc | |



| Ref. | Part No. | Qty | Description | Kit / Assy Includes |
|------|--------------|-----|---|---------------------|
| 1 | 506 00 79-02 | 1 | Frame, Sub Blk | |
| 2 | 573 97 83-01 | 1 | Belt | |
| 3 | 576 03 59-02 | 1 | Assembly, Oil Tank | 12, 30, 31 |
| 4 | 522 80 54-01 | 1 | Filter, 25 Micron | |
| 5 | 506 12 04-01 | 1 | Pump, 16CC Right | |
| 6 | 506 12 05-01 | 1 | Pump, 16CC Left | |
| 7 | 510 01 90-02 | 2 | Pulley, Pump 17 mm | |
| 8 | 510 28 37-02 | 1 | Pulley, Idler | |
| 9 | 525 43 56-01 | 1 | Pivot, Idler | |
| 10 | 510 20 63-01 | 1 | Pivot, Bearing | |
| 11 | 510 04 16-03 | 1 | Arm, Idler w/ Bearings | |
| 12 | 522 80 50-01 | 1 | Tube, Anti-Splash | |
| 13 | 510 25 45-01 | 1 | Shield, Dust | |
| 14 | 539 11 46-62 | 1 | Shield, Dust | |
| 15 | 574 39 85-02 | 2 | Shield, Pulley | |
| 16 | 577 43 72-01 | 1 | Spring, Pump | |
| 17 | 576 57 77-01 | 2 | Assembly, Vibration | |
| 18 | 539 10 12-42 | 1 | Elbow 90 Degree | |
| 19 | 539 10 33-16 | 2 | Connector | |
| 20 | 539 10 12-39 | 4 | Connector, Straight | |
| 21 | 539 10 12-37 | 7 | Connector, Straight | |
| 22 | 510 01 36-01 | 1 | Line, Hydraulic, Right-A | |
| 23 | 510 01 37-01 | 1 | Line, Hydraulic, Right-B | |
| 24 | 510 01 38-01 | 1 | Line, Hydraulic, Left-A | |
| 25 | 510 01 39-01 | 1 | Line, Hydraulic, Left-B | |
| 26 | 510 01 40-01 | 1 | Line, Hydraulic, Charge | |
| 27 | 510 01 45-01 | 2 | Line, Hydraulic, Case | |
| 28 | 510 01 07-01 | 1 | Line, Hydraulic, Suction | |
| 29 | 575 87 23-01 | 1 | Filter Hd | |
| 30 | 522 80 53-01 | 1 | Cap, Hydraulic | |
| 31 | 539 10 51-68 | 1 | Cap | |
| 32 | 539 10 11-77 | 2 | Key, Metric | |
| 33 | 539 99 03-16 | 4 | Bolt 5/16-18 unc x 3/4 Round Hd Square Neck | |
| 34 | 872 14 06-10 | 1 | Bolt 3/8-16 x 1-1/4 Round Hd Square Neck | |
| 35 | 872 14 06-22 | 1 | Bolt 3/8-16 x 2-3/4 Round Hd Square Neck | |
| 36 | 539 10 29-33 | 1 | Bolt 5/16-18 x 1-1/2 Round Hd Square Neck | |
| 37 | 874 78 08-44 | 8 | Bolt 1/2-13 x 2-3/4 Hex Hd | |
| 38 | 525 54 48-01 | 4 | Bolt 1/2-13 x 4 Hex Flange Hd | |
| 39 | 525 83 42-01 | 4 | Bolt 3/8-16 x 1-1/4 Hex Flange Hd | |
| 40 | 817 49 05-16 | 2 | Screw 5/16-18 x 1 Thread Form | |
| 41 | 539 99 00-72 | 2 | Bolt 1/4-20 x 5/8 Hex Hd | |
| 42 | 874 78 08-52 | 1 | Bolt 1/2-13 x 3-1/4 Hex Hd | |
| 43 | 539 10 27-17 | 4 | Screw 5/16-18 x 5/8 Set | |
| 44 | 539 99 06-13 | 1 | Nut 3/8-16 Hex Whiz lock | |
| 45 | 539 11 28-99 | 5 | Nut 5/16-18 Hex Flange Nyloc | |
| 46 | 521 99 65-01 | 4 | Nut 3/8-16 Hex Flange Nyloc | |
| 47 | 539 20 02-82 | 4 | Nut 3/8-16 Hex Jam Nyloc | |
| 48 | 521 99 11-01 | 5 | Nut 1/2-13 Hex Flange Nyloc | |
| 49 | 539 11 55-28 | 1 | Washer 1/2 Belleville | |
| 50 | 522 02 34-01 | 1 | Washer 3/8 Thick | |
| 51 | 539 99 00-52 | 2 | Washer 1/4 Split Lock | |
| 52 | 819 18 22-12 | 1 | Washer 1/2 Flat | |



| Ref. | Part No. | Qty | Description | Kit / Assy Includes |
|------|--------------|-----|-----------------------------------|---------------------|
| 1 | 510 15 46-02 | 2 | Assembly, Tire 13 x 6.5 Flat Free | |
| 2 | 591 09 17-01 | 2 | Assembly, Tire 24 x 12-12 | |
| 3 | 539 10 14-74 | 2 | Zerk | |
| 4 | 510 03 40-01 | 2 | Cap, Dust | |
| 5 | 525 61 19-05 | 2 | Fork, Caster, Red | |
| 6 | 590 70 49-01 | 2 | Spacer, Hub | |
| 7 | 590 69 07-01 | 4 | Spacer, Axle | |
| 8 | 510 03 43-01 | 2 | Seal, Bearing | |
| 9 | 510 03 44-03 | 4 | Cone | |
| 10 | 539 10 55-17 | 2 | Bolt 1/2-13 x 9-1/2 Hex Nyloc | |
| 11 | 521 99 11-01 | 2 | Nut 1/2-13 Hex Flange Nyloc | |
| 12 | 522 84 26-01 | 2 | Nut 3/4-16 Hex Thin Nyloc | |
| 13 | 587 65 39-02 | 8 | Nut, Lug | |
| 14 | 539 99 02-50 | 4 | Washer 1/2 SAE | |
| 15 | 574 82 47-01 | 2 | Washer 3/4 Hardened | |