

WTS 830

Spare parts list

Spreader carriage

WTS 830



General information

This spare parts list applies to the following:

| Part number | Description |
|-------------|---------------------------|
| 967882201 | Spreader carriage WTS 830 |
| | |

Use only authorized parts. Any damage or malfunction caused by the use of unauthorized parts is not covered by Warranty or Product Liability. Any unauthorized use or copying of the contents or any part thereof is prohibited. This applies in particular to trademarks, model denominations, part numbers, and drawings.

Instructions for use

This spare parts list contains no safety regulations and is merely intended to assist in the ordering of spare parts.

For information about operating, servicing, or repairing, the relevant Safety and operating instructions must be consulted at all costs.

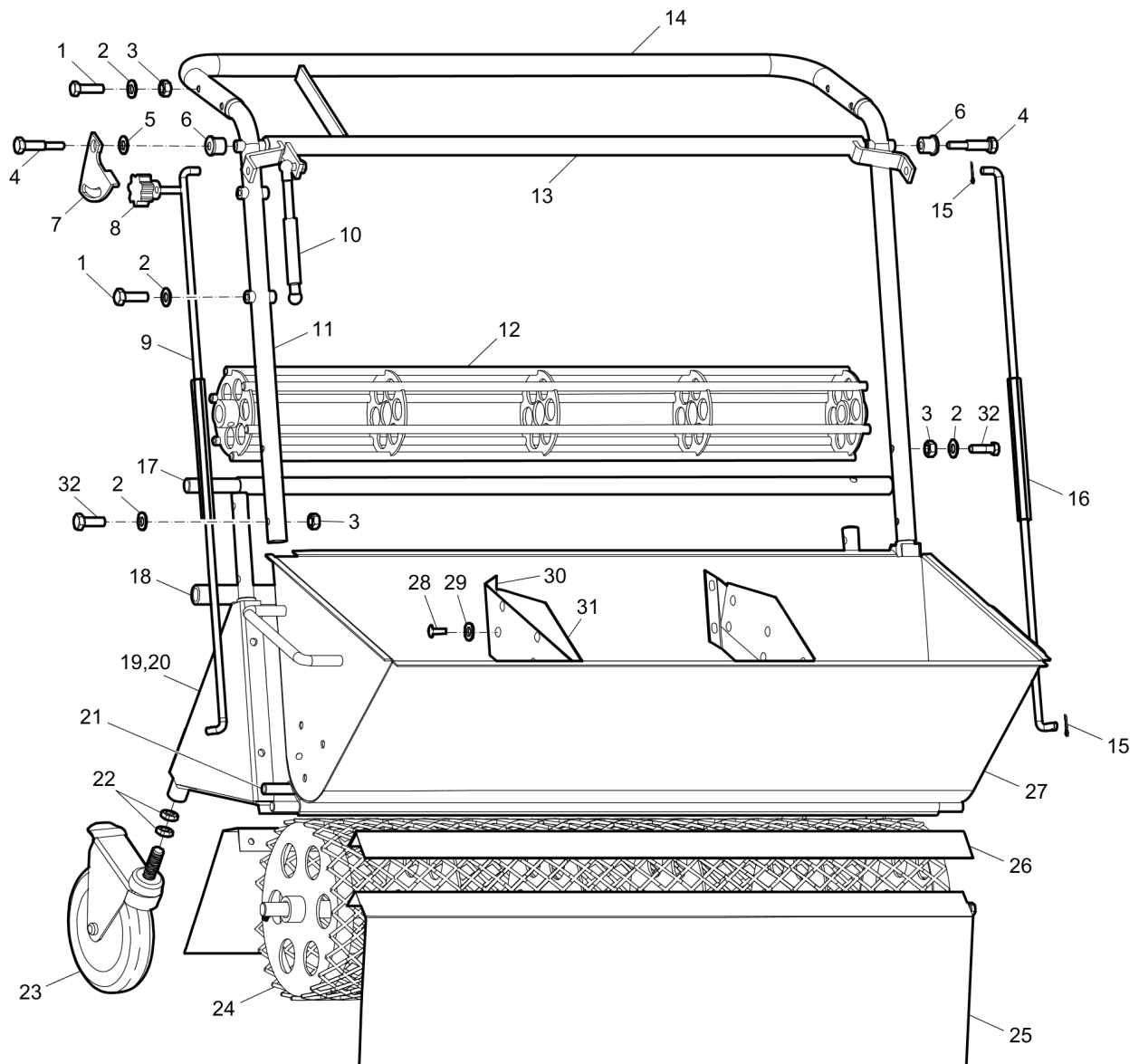
Please observe the safety instructions listed in the relevant Safety and operating instructions!

Mechanical

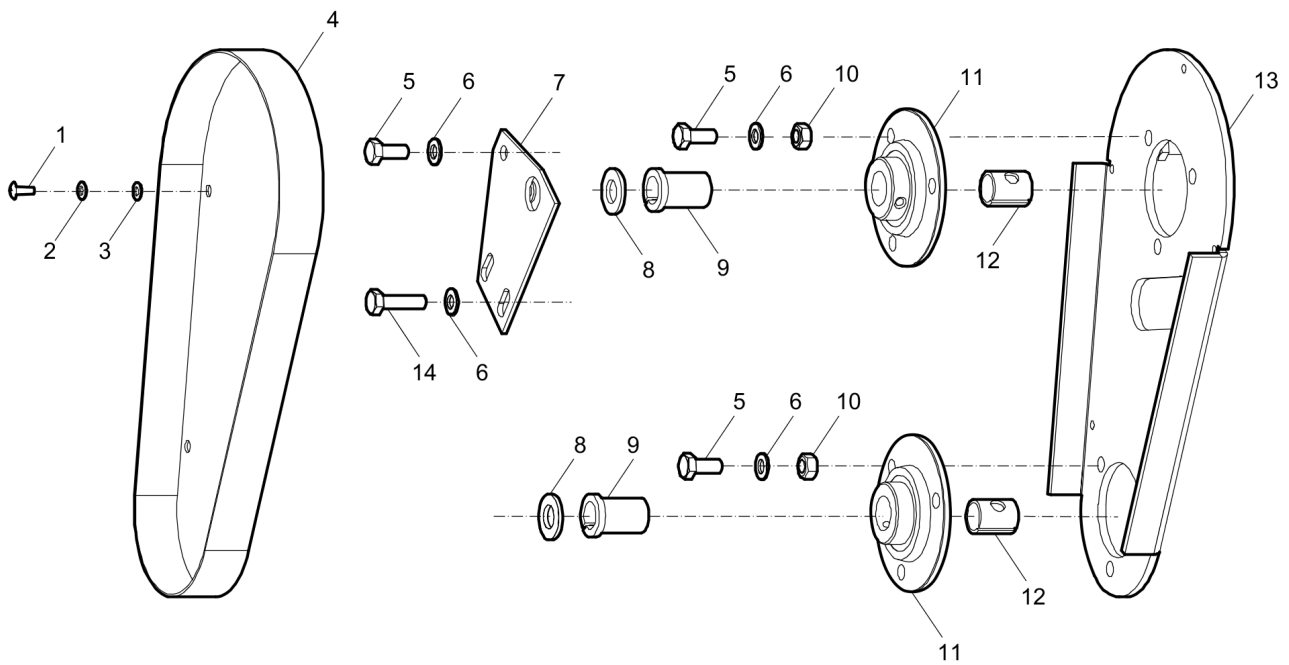
Spreader wagon 1

Right belt guard 3

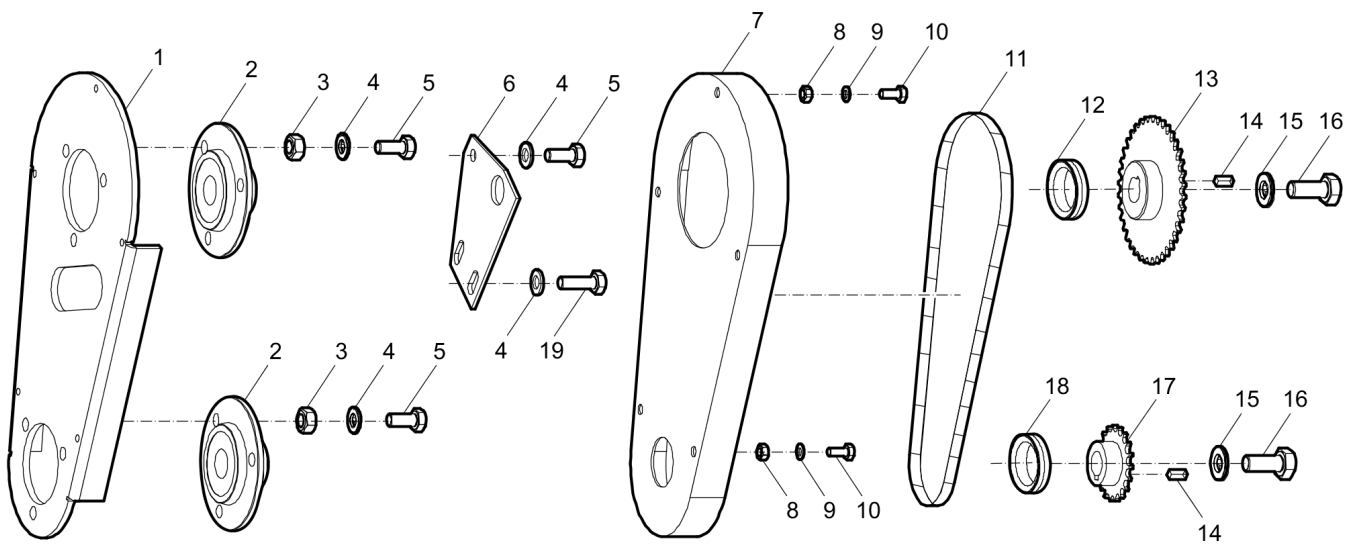
Left belt guard 5

Mechanical Spreader wagon

| Item | Part No. | Name | Qty | L |
|------|-----------|---------------------|-----|---|
| 1 | - | Screw, M8 x 35 mm | 4 | |
| 2 | - | Washer, M8 | 10 | |
| 3 | - | Nut, M8 | 8 | |
| 4 | 595208101 | Screw | 2 | |
| 5 | 595207901 | Washer | 1 | |
| 6 | 595208201 | Bushing | 2 | |
| 7 | 595496301 | Block plate | 1 | |
| 8 | 595209901 | Knob | 1 | |
| 9 | 595496401 | Pull rod | 4 | |
| 10 | 595497301 | Air spring | 1 | |
| 11 | 595496801 | Handle tube, right | 1 | |
| 12 | 595526001 | Mixer | 1 | |
| 13 | 595208801 | Flow control handle | 1 | |
| 14 | 595496201 | Upper handle | 1 | |
| 15 | 595497201 | Pin | 4 | |
| 16 | 595208001 | Connector | 2 | |
| 17 | 595208501 | Mixer shaft | 2 | |
| 18 | 595208901 | Tube | 1 | |
| 19 | 595496701 | Joint plate, right | 1 | |
| 20 | 595208601 | Joint plate, left | 1 | |
| 21 | 595496901 | Block | 1 | |
| 22 | - | Nut, M8 | 4 | |
| 23 | 595497401 | Wheel | 2 | |
| 24 | 594638301 | Roller | 1 | |
| 25 | 595208401 | Roller cover | 2 | |
| 26 | 595208301 | Cover plate | 2 | |
| 27 | 595208701 | Hopper | 1 | |
| 28 | - | Screw, M5 x 12 mm | 12 | |
| 29 | - | Washer, M5 | 12 | |
| 30 | 595496501 | Blade plate | 2 | |
| 31 | 595496501 | Blade plate | 2 | |
| 32 | - | Screw, M8 x 30 mm | 4 | |

Mechanical Right belt guard

| Item | Part No. | Name | Qty | L |
|------|-----------|-------------------|-----|---|
| 1 | - | Screw, M6 x 15 mm | 2 | |
| 2 | - | Washer, M6 | 2 | |
| 3 | - | Locknut, M6 | 2 | |
| 4 | 595209801 | Belt guard, outer | 1 | |
| 5 | - | Screw, M8 x 20 mm | 7 | |
| 6 | - | Washer, M8 | 9 | |
| 7 | 595209201 | Roller plate | 1 | |
| 8 | 595209501 | Check ring | 2 | |
| 9 | 595209401 | Bushing | 2 | |
| 10 | - | Nut, M8 | 6 | |
| 11 | 595210201 | Bearing | 6 | |
| 12 | 595209301 | Bushing | 6 | |
| 13 | 595209001 | Mounting plate | 2 | |
| 14 | - | Screw, M8 x 30 mm | 2 | |

Mechanical Left belt guard

| Item | Part No. | Name | Qty | L |
|------|-----------|--------------------|-----|---|
| 1 | 595209101 | Mounting plate | 1 | |
| 2 | 595210201 | Bearing | 2 | |
| 3 | - | Nut, M8 | 6 | |
| 4 | - | Washer, M8 | 8 | |
| 5 | - | Screw, M8 x 20 mm | 7 | |
| 6 | 595209201 | Roller plate | 1 | |
| 7 | 595497001 | Belt guard, inner | 1 | |
| 8 | - | Nut, M6 | 5 | |
| 9 | - | Washer, M6 | 5 | |
| 10 | - | Screw, M6 x 15 mm | 5 | |
| 11 | 594638401 | Chain | 1 | |
| 12 | 595210001 | Seal | 1 | |
| 13 | 595209601 | Chain wheel, large | 1 | |
| 14 | 595210301 | Key | 2 | |
| 15 | - | Washer, M10 | 2 | |
| 16 | - | Screw, M10 x 20 mm | 2 | |
| 17 | 595209701 | Chain wheel, small | 1 | |
| 18 | 595497101 | Seal | 1 | |
| 19 | - | Screw, M8 x 30 mm | 2 | |

Any unauthorized use or copying of the contents or any part thereof is prohibited.
This applies in particular to trademarks, model denominations, part numbers, and
drawings.

