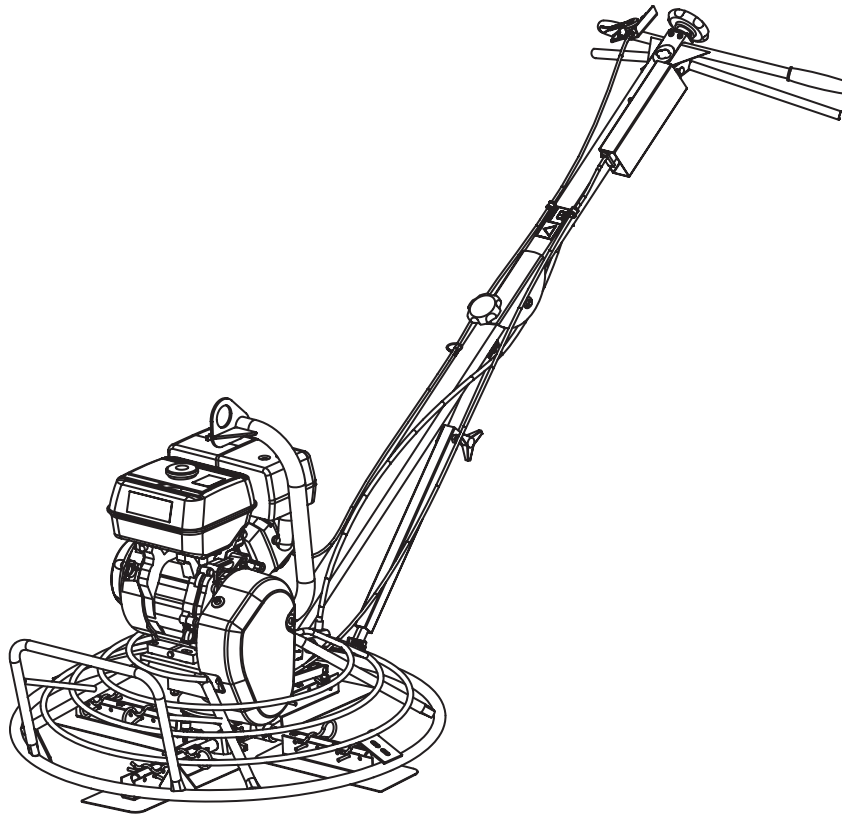


BG370

Spare parts list

Trowel

s/n BES020047 -



General information

This spare parts list applies to the following:

Part number	Description
3382 0001 03	Trowel BG370 H5-S-TP
3382 0001 05	Trowel BG370 H6-S-TP
3382 0001 06	Trowel BG370 H6-L-TP
3382 0001 07	Trowel BG370 H9-L-TP

Use only authorized parts. Any damage or malfunction caused by the use of unauthorized parts is not covered by Warranty or Product Liability. Any unauthorized use or copying of the contents or any part thereof is prohibited. This applies in particular to trademarks, model denominations, part numbers, and drawings.

Instructions for use

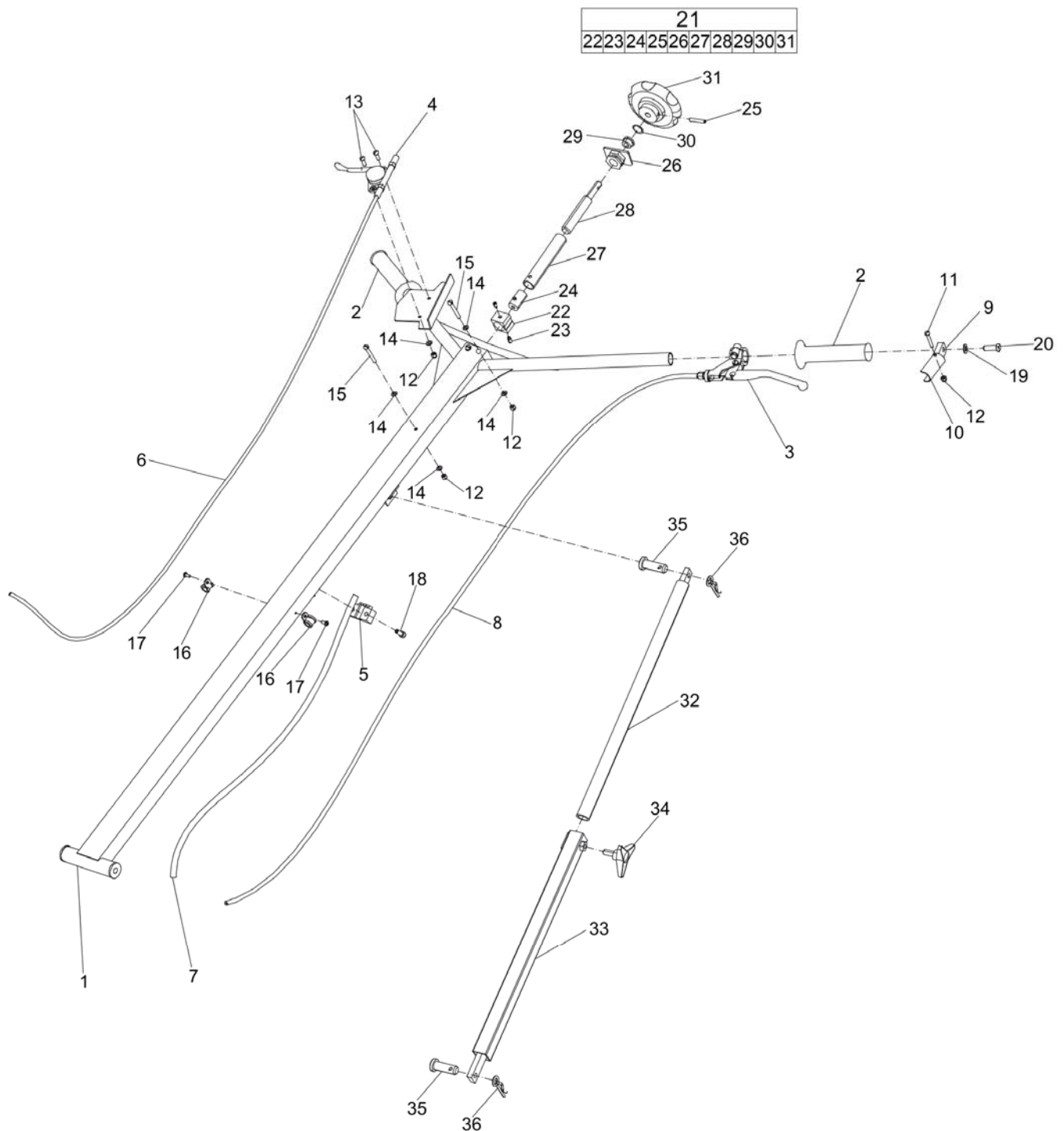
This spare parts list contains no safety regulations and is merely intended to assist in the ordering of spare parts.

For information about operating, servicing, or repairing, the relevant Safety and operating instructions must be consulted at all costs.

Please observe the safety instructions listed in the relevant Safety and operating instructions!

Contents

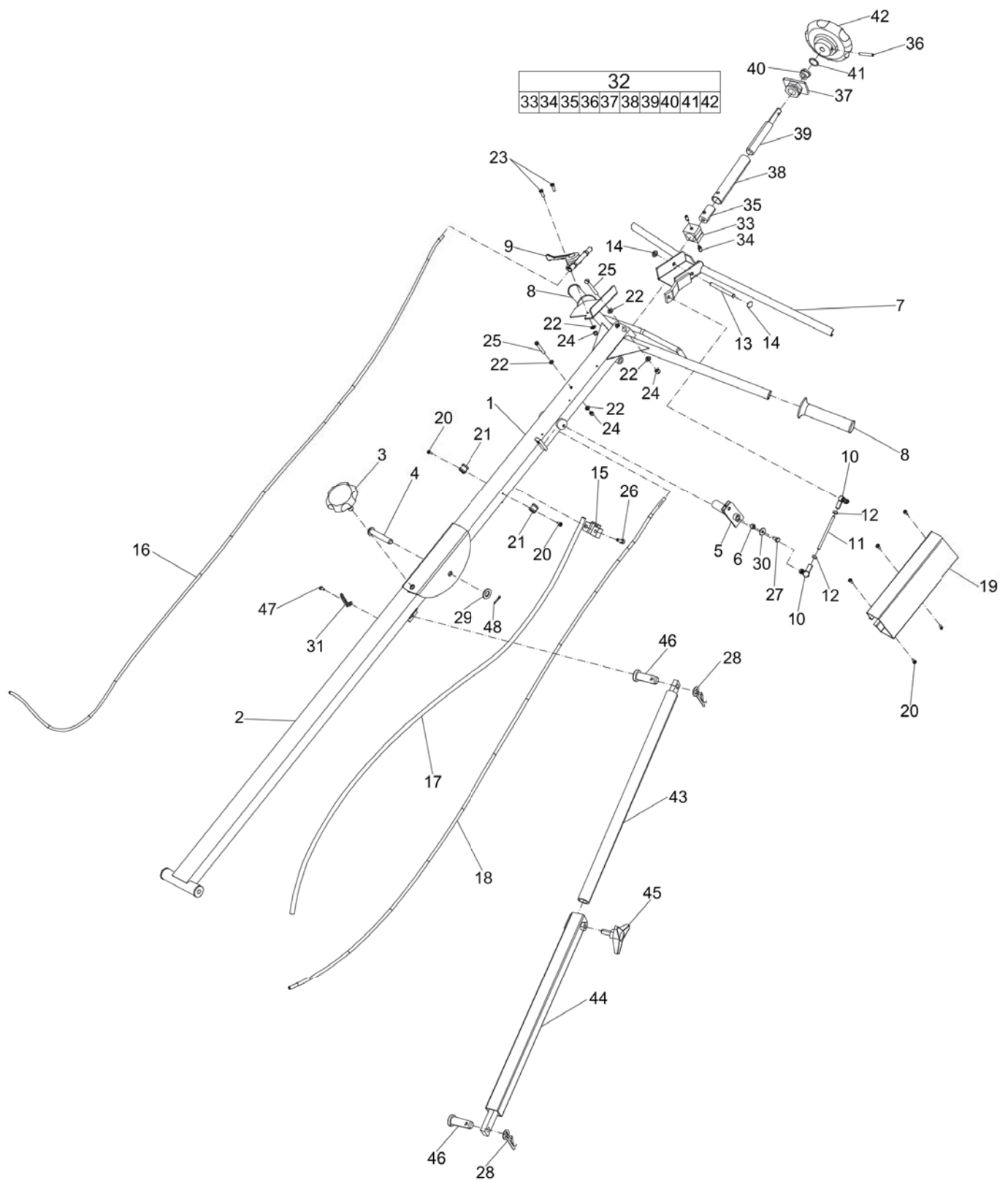
Spare parts list	
Short handle	4
Long handle	6
Engine installation, Honda GX 160	10
Engine installation, Honda GX 200	13
Engine installation, Honda GX 270	17
Power transmission, Honda GX 160, GX 200	21
Power transmission, Honda GX 270	25
Chassi and gearbox	29
Blade assembly	33
Labels, short handle	37
Labels, long handle	41
Accessories	
Consumables	45
Kits	
Service kit, Honda GX 160	49
Service kit, Honda GX 200	52
Service kit, Honda GX 270	54
Maintenance kit, Honda GX 160 and 200, short handle	56
Maintenance kit, Honda GX 200, long handle	58
Maintenance kit, Honda GX 270, long handle	60
Transport device kit	62
Bolt on blade kit	64
Gear box seal kit	66

Spare parts list Short handle

Refer to Parts Online for the most up to date information. The printed information might be outdated.

Thu Sep 04 06:17:59 UTC 2014

Item	Part No.	Name	Qty	L
1	3382010564	Short handle	1	
2	4700001213	Rubber handle	2	
3	4700002227	Clutch handle	1	
4	4700001739	Trottle control	1	
5	3382011054	Wire console	1	
6	4700047869	Gas wire	1	
7	4812060196	Blade adjusting wire	1	
8	4700047870	Clutch wire	1	
9	4700364758	Handle holder	1	
10	4700364759	Handle	1	
11	-	Screw, M5 x 30 mm A2K	1	
12	-	Lock nut, M5 ISO7040	6	
13	-	Screw, M5 x 16 mm A2K	2	
14	-	Washer, 5.0 x 1 mm, 0.20 x 0.04 in.	8	
15	-	Screw, M5 x 40 mm A2K	3	
16	0346100003	Pipe clamp	2	
17	0226334389	Tapping screw	2	
18	-	Screw, M6 x 16 mm	2	
19	-	Washer, 8.0 x 1.6 mm, 0.31 x 0.06 in.	1	
20	-	Screw, M8 x 20 mm 8.8 A2K	1	
21	3382100061	Blade adjuster, complete	1	
.22	--	Guiding	1	
.23	--	Stop screw, M5 x 12 mm	2	
.24	--	Wire lock	1	
.25	--	Roll pin, 5 x 30 mm, 0.20 x 1.18 in.	1	
.26	--	Bearing support	1	
.27	--	Adjusting nut	1	
.28	--	Adjusting screw	1	
.29	--	Flange bearing	1	
.30	--	Washer, 10 x 2 mm, 0.39 x 0.08 in.	1	
.31	--	Knob	1	
32	4700047210	Upper stay	1	
33	3382010562	Lower stay	1	
34	4700046289	Cross grip	1	
35	4700002195	Clevis pin, 10 x 28 mm, 0.39 x 1.10 in.	2	
36	0111168606	LOCKING CLIP	2	

Spare parts list Long handle

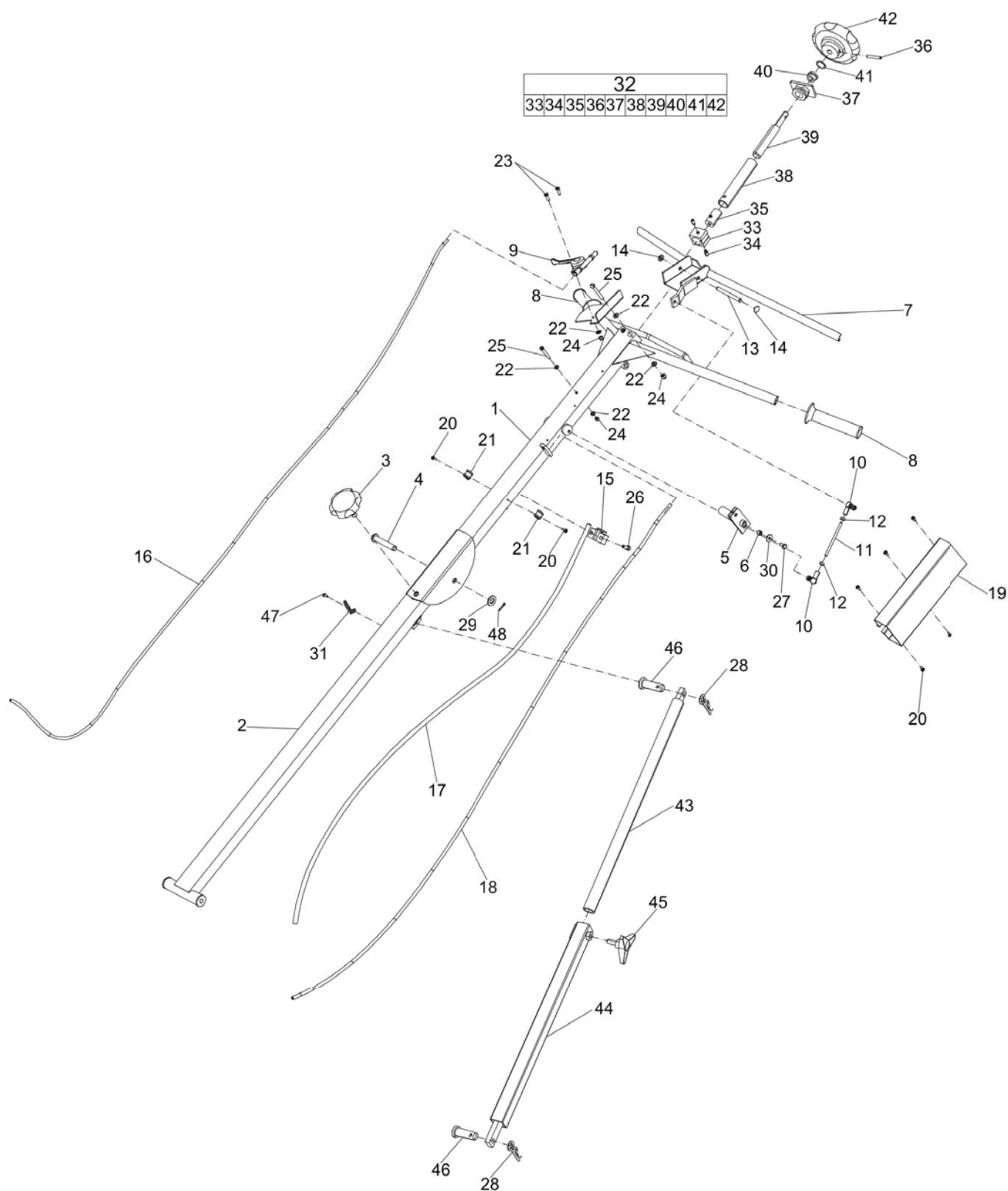
Refer to Parts Online for the most up to date information. The printed information might be outdated.

Thu Sep 04 06:18:02 UTC 2014

Item	Part No.	Name	Qty	L
1	3382010560	Long handle upper part	1	
2	3382010561	Long handle lower part	1	
3	3382010380	Knob	1	
4	4700002392	Clevis pin, 12 x 70 mm, 0.47 x 2.75 in.	1	
5	3382011571	Connection arm	1	
6	4700000143	Sleeve bearing	1	
7	3382010563	Safety grip	1	
8	4700001213	Rubber handle	2	
9	4700001739	Trottle control	1	
10	4700002188	Angular joint	2	
11	4700002574	Threaded pin	1	
12	-	Nut, M6	2	
13	4700002872	Clevis pin, 8 x 80 mm, 0.31 x 3.15 in.	1	
14	4700002871	Locking washer	2	
15	3382011054	Wire console	1	
16	4700048527	Throttle wire	1	
17	4812060248	Blade adjusting wire	1	
18	4700048357	Clutch wire	1	
19	3382010565	Hood	1	
20	0226334389	Tapping screw	7	
21	0346100003	Pipe clamp	2	
22	-	Washer, 5 x 10 x 1 mm, 0.20 x 0.39 x 0.04 in.	8	
23	-	Screw, M5 x 16 mm	2	
24	-	Lock nut, M5	5	
25	-	Screw, M5 x 40 mm	3	
26	-	Screw, M6 x 16 mm	2	
27	-	Screw, M6 x 12 mm 8.8 A2K	1	
28	0111168606	LOCKING CLIP	2	
29	-	Washer, 13 x 2.5 mm, 0.51 x 0.10 in.	1	
30	-	Washer, 6 x 1.6 mm, 0.24 x 0.06 in.	1	
31	4700046431	Wire holder	1	
32	3382100061	Blade adjuster, complete	1	
.33	--	Guiding	1	
.33	--	Guiding	1	
.34	--	Stop screw, M5 x 12 mm	2	
.34	--	Stop screw, M5 x 12 mm	2	
.35	--	Wire lock	1	

Refer to Parts Online for the most up to date information. The printed information might be outdated.

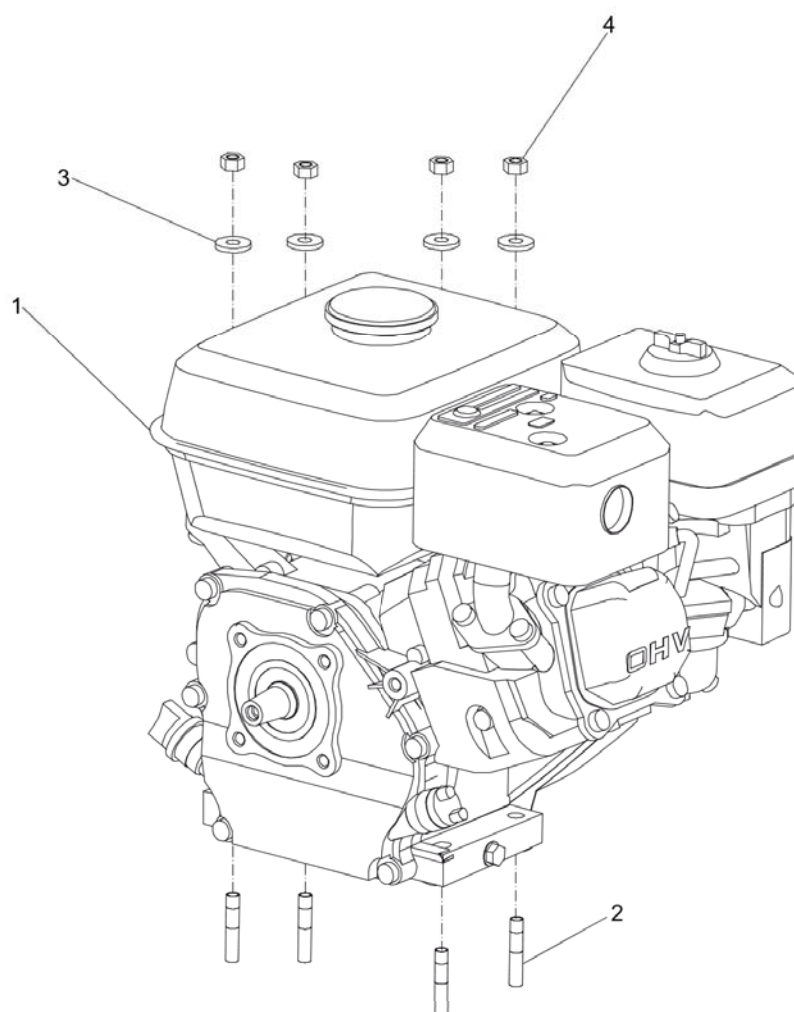
Thu Sep 04 06:18:02 UTC 2014



Refer to Parts Online for the most up to date information. The printed information might be outdated.

Thu Sep 04 06:18:02 UTC 2014

Item	Part No.	Name	Qty	L
.35	--	Wire lock	1	
.36	--	Roll pin, 5 x 30 mm, 0.20 x 1.18 in.	1	
.36	--	Roll pin, 5 x 30 mm, 0.20 x 1.18 in.	1	
.37	--	Bearing support	1	
.37	--	Bearing support	1	
.38	--	Adjusting nut	1	
.38	--	Adjusting nut	1	
.39	--	Adjusting screw	1	
.39	--	Adjusting screw	1	
.40	--	Flange bearing	1	
.40	--	Flange bearing	1	
.41	--	Washer, 10 x 2 mm, 0.39 x 0.08 in.	1	
.41	--	Washer, 10 x 2 mm, 0.39 x 0.08 in.	1	
.42	--	Knob	1	
.42	--	Knob	1	
43	4700047210	Upper stay	1	
44	3382010562	Lower stay	1	
45	4700046289	Cross grip	1	
46	4700002195	Clevis pin, 10 x 28 mm, 0.39 x 1.10 in.	2	
47	0226313903	Tapping screw	1	
48	0111127903	Split pin, 3.2 x 28 mm, 0.13 x 1.10 in.	1	

Spare parts list Engine installation, Honda GX 160

Item	Part No.	Name	Qty	L
1	3382010842	Engine	1	A
2	0248998009	Stud, M8 x 40 mm Use LOCTITE®243TM	4	
3	-	Washer, 8.4 x 18 x 3 mm, 0.33 x 0.71 x 0.12 in. 200-300 HV	4	
4	-	Nut, M8	4	

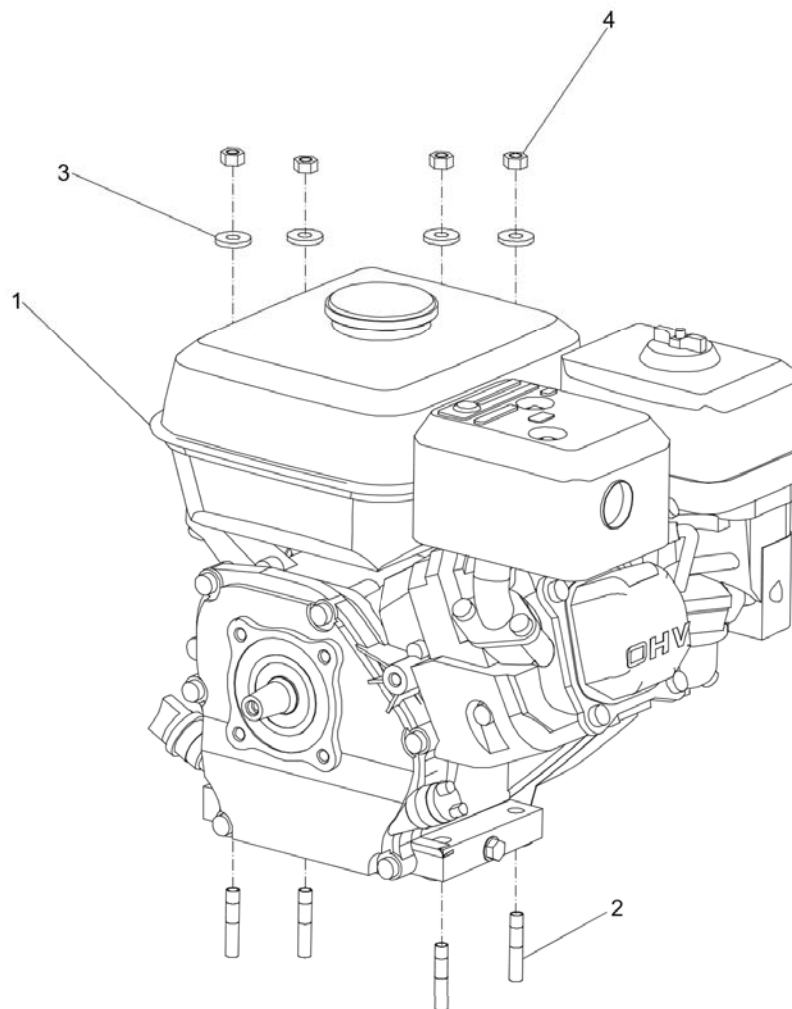
Comments for Page: Engine installation, Honda GX 160

LOCTITE is a registered trademark of Henkel Corporation. 243 is a trademark of Henkel Corporation.

(L)OCAL REMARKS

A | Honda GX 160

Page intentionally left blank

Spare parts list Engine installation, Honda GX 200

Item	Part No.	Name	Qty	L
1	3382010843	Engine	1	A
2	0248998009	Stud, M8 x 40 mm Use LOCTITE®243TM	4	
3	-	Washer, 8.4 x 18 x 3 mm, 0.33 x 0.71 x 0.12 in. 200-300 HV	4	
4	-	Nut, M8	4	

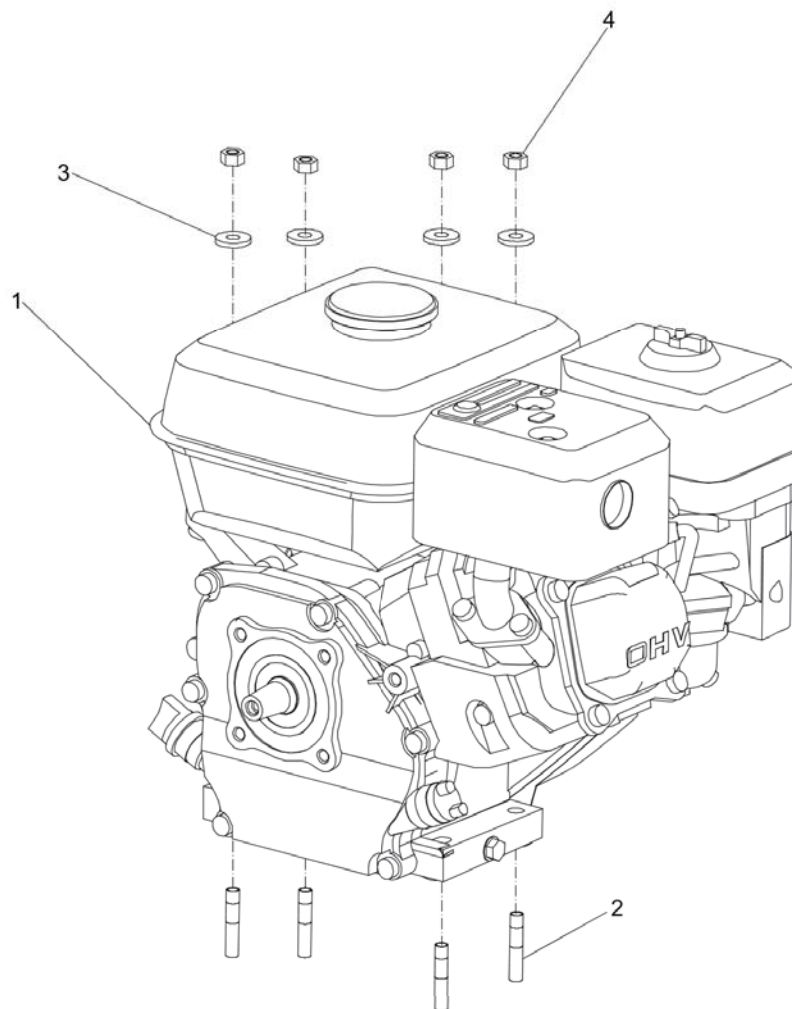
Comments for Page: Engine installation, Honda GX 200

LOCTITE is a registered trademark of Henkel Corporation. 243 is a trademark of Henkel Corporation.

(L)OCAL REMARKS

A | Honda GX 200

Page intentionally left blank

Spare parts list Engine installation, Honda GX 270

Item	Part No.	Name	Qty	L
1	3382010844	Engine	1	A
2	0248997914	Stud, M10 x 45 mm, Loctite® 243™	4	
3	-	Washer, 10.5 x 22 x 3 mm, 0.41 x 0.87 x 0.12 in. 200-300 HV	4	
4	-	Nut, M10	4	

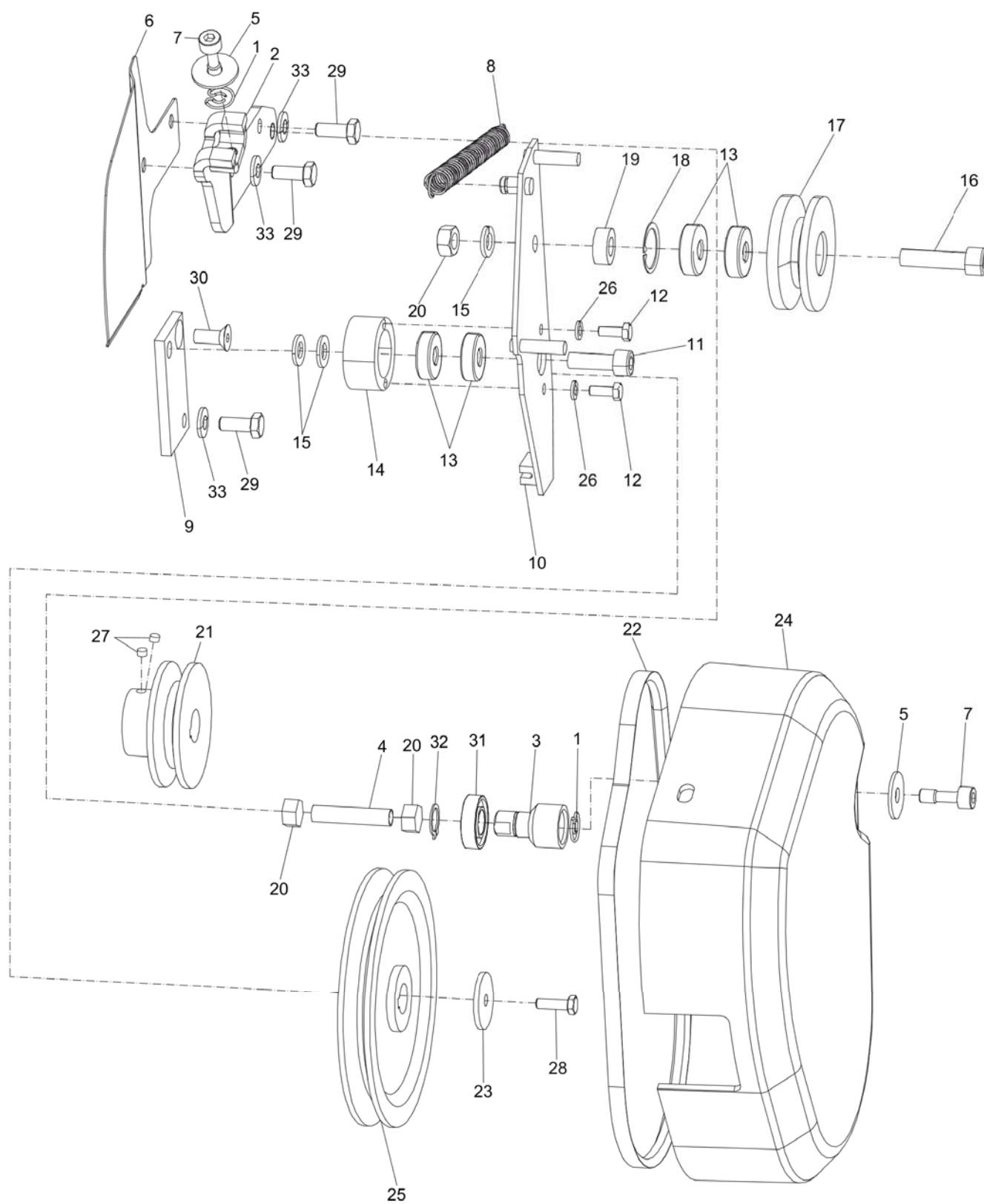
Comments for Page: Engine installation, Honda GX 270

Loctite is a registered trademark of Henkel Corporation. 243 is a trademark of Henkel Corporation.

(L)OCAL REMARKS

A | Honda GX 270

Page intentionally left blank

Spare parts list Power transmission, Honda GX 160, GX 200

Refer to Parts Online for the most up to date information. The printed information might be outdated.

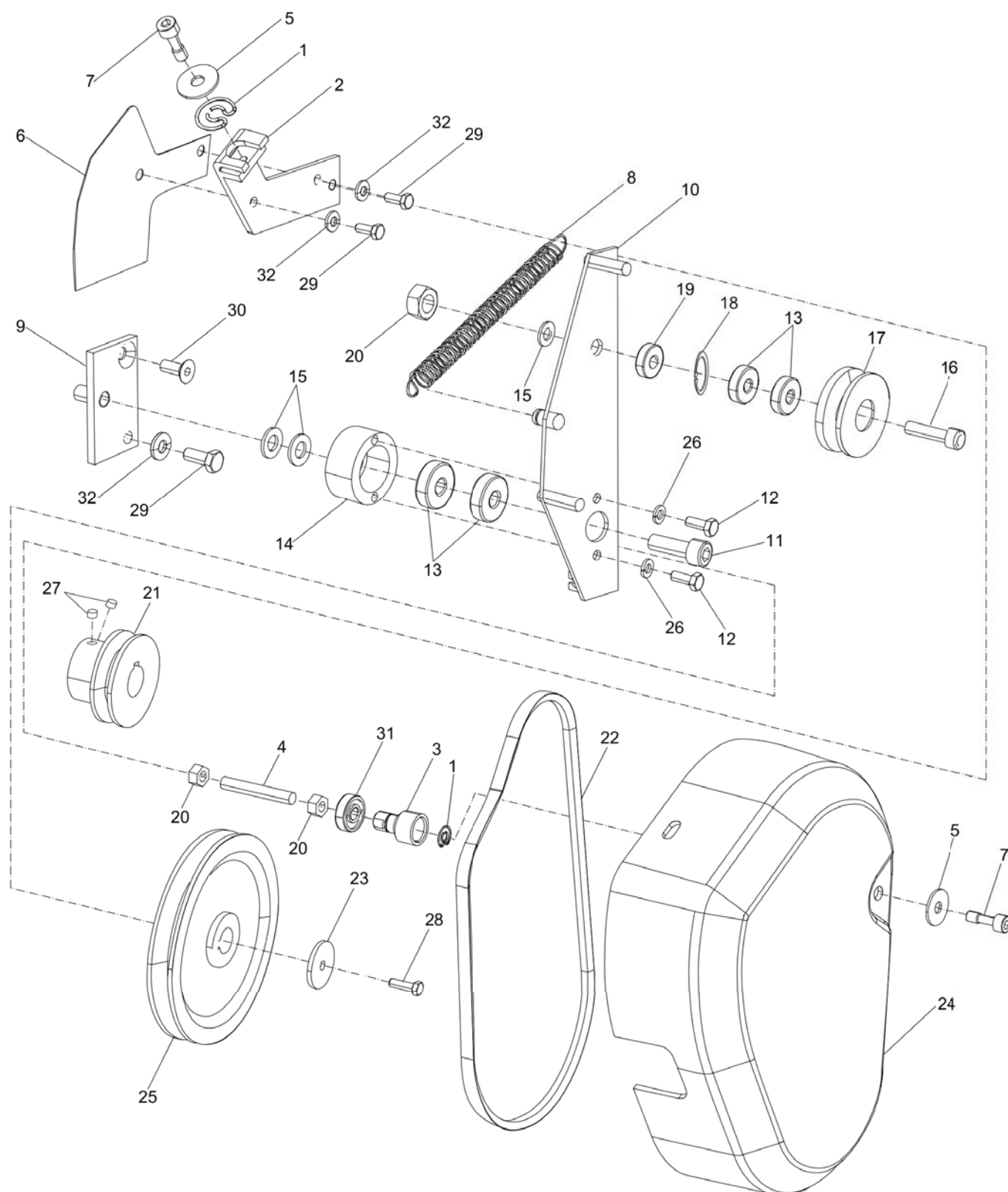
Thu Sep 04 06:18:11 UTC 2014

Item	Part No.	Name	Qty	L
1	3382010972	Lock spring	2	
2	3382010568	Cover bracket	1	
3	4812060274	Holder	1	
4	4812060302	Rod, M10 x 48 mm 8.8	1	
5	-	Washer, 8 x 30 mm, 0.31 x 1.18 in.	2	
6	3382010569	Safety plate	1	
7	4812060278	Captive screw	2	
8	4700047871	Pull spring	1	
9	4700047786	Bracket	1	
10	4700047787	Belt tensioner	1	
11	-	Cap screw, M10 x 30 mm 8.8	1	
12	-	Screw, M6 x 20 mm 8.8	2	
13	4150190500	Ball bearing	4	
14	4700047789	Bearing housing	1	
15	-	Washer, 10 x 2 mm, 0.39 x 0.08 in.	3	
16	-	Cap screw, M10 x 40 mm 8.8	1	
17	4700047790	Pulley	1	
18	0335213200	Retaining ring	1	
19	3382010753	Spacer	1	
20	-	Nut, M10	3	
21	4812060194	Pulley	1	
22	4700002808	Belt, M=s XPA 732 mm	1	
23	-	Washer, 6.5 x 30 x 4 mm, 0.26 x 1.18 x 0.16 in. 300 HV	1	
24	3382010558	Belt cover	1	
25	4700032629	Belt wheel	1	
26	-	Washer, 6 x 1.6 mm, 0.24 x 0.06 in.	1	
27	0196131800	Set screw	2	
28	-	Screw, M6 x 20 mm 8.8, Use LOCTITE® 243™	1	
29	-	Screw, M8 x 20 mm 8.8	3	
30	-	Screw, M8 x 30 mm	1	
31	0502109002	Ball bearing	1	
32	0335111700	Retaining ring	1	
33	-	Washer, 8.1 x 2 mm, 0.32 x 0.08 in.	3	

Comments for Page: Power transmission, Honda GX 160, GX 200

LOCTITE is a registered trademark of Henkel Corporation. 243 is a trademark of Henkel Corporation.© 2011

Page intentionally left blank

Spare parts list Power transmission, Honda GX 270

Refer to Parts Online for the most up to date information. The printed information might be outdated.

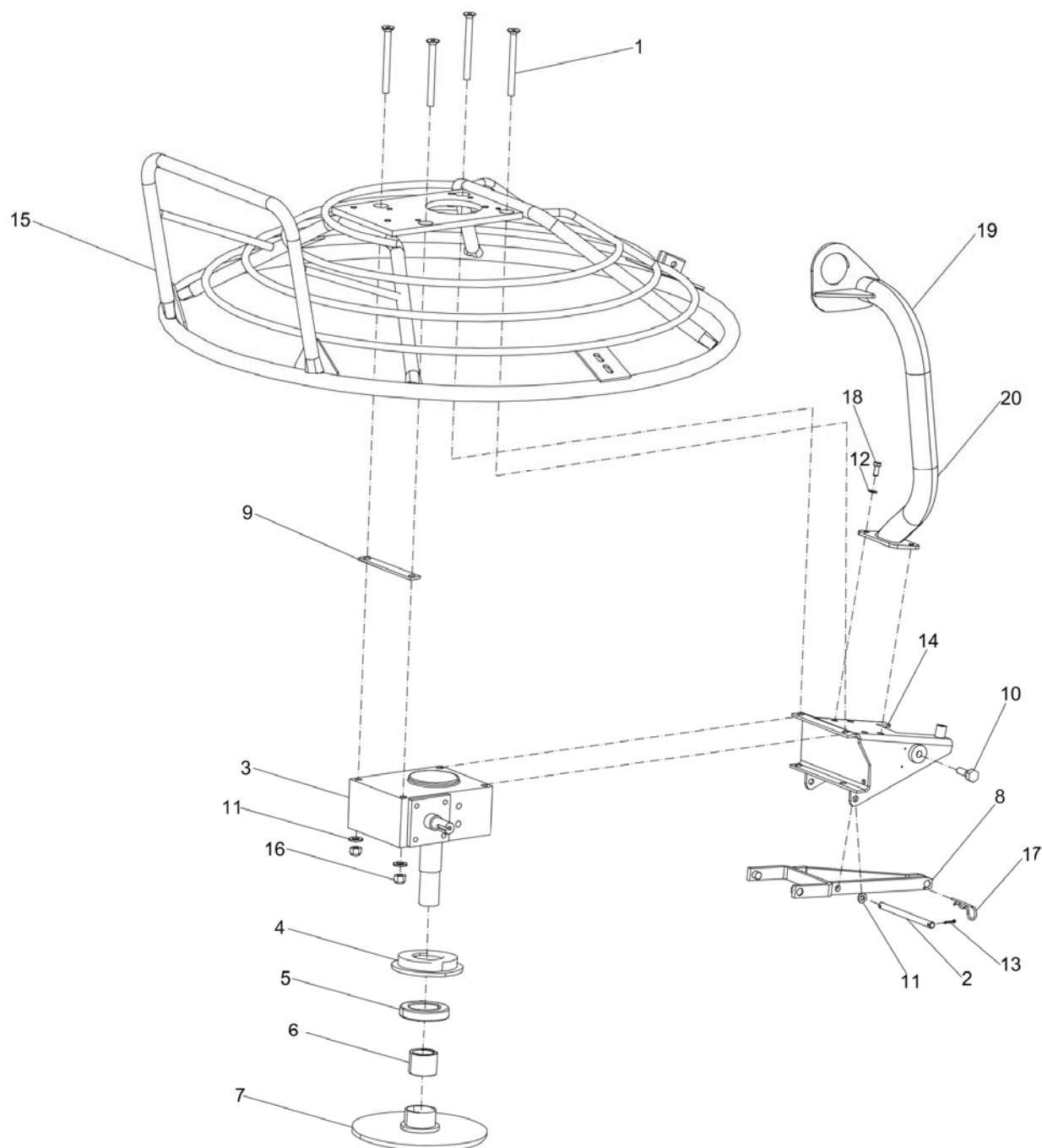
Thu Sep 04 06:18:13 UTC 2014

Item	Part No.	Name	Qty	L
1	3382010972	Lock spring	2	
2	3382010723	Cover bracket	1	
3	4812060274	Holder	1	
4	4812060275	Rod, M10 x 68 mm 8.8	1	
5	-	Washer, 8 x 30 mm, 0.31 x 1.18 in.	2	
6	4812060277	Safety plate	1	
7	4812060278	Captive screw	2	
8	4700047871	Pull spring	1	
9	4700048077	Bracket	1	
10	4700047973	Belt tensioner	1	
11	-	Cap screw, M10 x 30 mm 8.8	1	
12	-	Screw, M6 x 20 mm 8.8	2	
13	4150190500	Ball bearing	4	
14	4700047789	Bearing housing	1	
15	-	Washer, 10 x 2 mm, 0.39 x 0.08 in.	3	
16	-	Cap screw, M10 x 40 mm 8.8	1	
17	4700047790	Pulley	1	
18	0335213200	Retaining ring	1	
19	3382010753	Spacer	1	
20	-	Nut, M10	3	
21	4812060247	Pulley	1	
22	4700002372	Belt, Optibelt super SPAX 782 mm	1	
23	-	Washer, 6.5 x 30 x 4 mm, 0.26 x 1.18 x 0.16 in. 300 HV	1	
24	3382010559	Belt cover	1	
25	4700032629	Belt wheel	1	
26	-	Washer, 6 x 1.6 mm, 0.24 x 0.06 in.	1	
27	0196131800	Set screw	2	
28	-	Screw, M6 x 20 mm 8.8, Use LOCTITE® 243™	1	
29	-	Screw, M8 x 20 mm 8.8	3	
30	-	Countersunk screw, M8 x 30 mm	1	
31	4150190500	Ball bearing	1	
32	-	Washer, 8.1 x 2 mm, 0.32 x 0.08 in.	3	

Comments for Page: Power transmission, Honda GX 270

LOCTITE is a registered trademark of Henkel Corporation. 243 is a trademark of Henkel Corporation.© 2011

Page intentionally left blank

Spare parts list Chassi and gearbox

Item	Part No.	Name	Qty	L
1	4700186573	Screw	4	
2	3382010652	Clevis pin	1	
3	4700002223	Gear box	1	
4	4700047769	Bearing plate	1	
5	4700000115	Ball bearing, 6010 - 2RS1	1	
6	4700002225	Sleeve bearing	1	
7	4700032632	Pressure plate	1	
8	4700032801	Fork	1	
9	3382010557	Spacer plate	1	
10	4700048368	Screw	2	
11	-	Washer, 10 x 2 mm, 0.39 x 0.08 in.	6	
12	-	Washer, 8.0 x 1.6 mm, 0.31 x 0.06 in.	3	
13	0111127903	Split pin, 3.2 x 28 mm, 0.13 x 1.10 in.	2	
14	3382010555	Handle bracket	1	
15	3382010556	Chassi	1	
16	-	Lock nut, M10	4	
17	0111168607	Hair pin	1	
18	-	Screw, M8 x 20 mm 8.8 A2K	3	
19	3382010545	Lifting eye	1	A
20	3382010546	Lifting eye	1	B

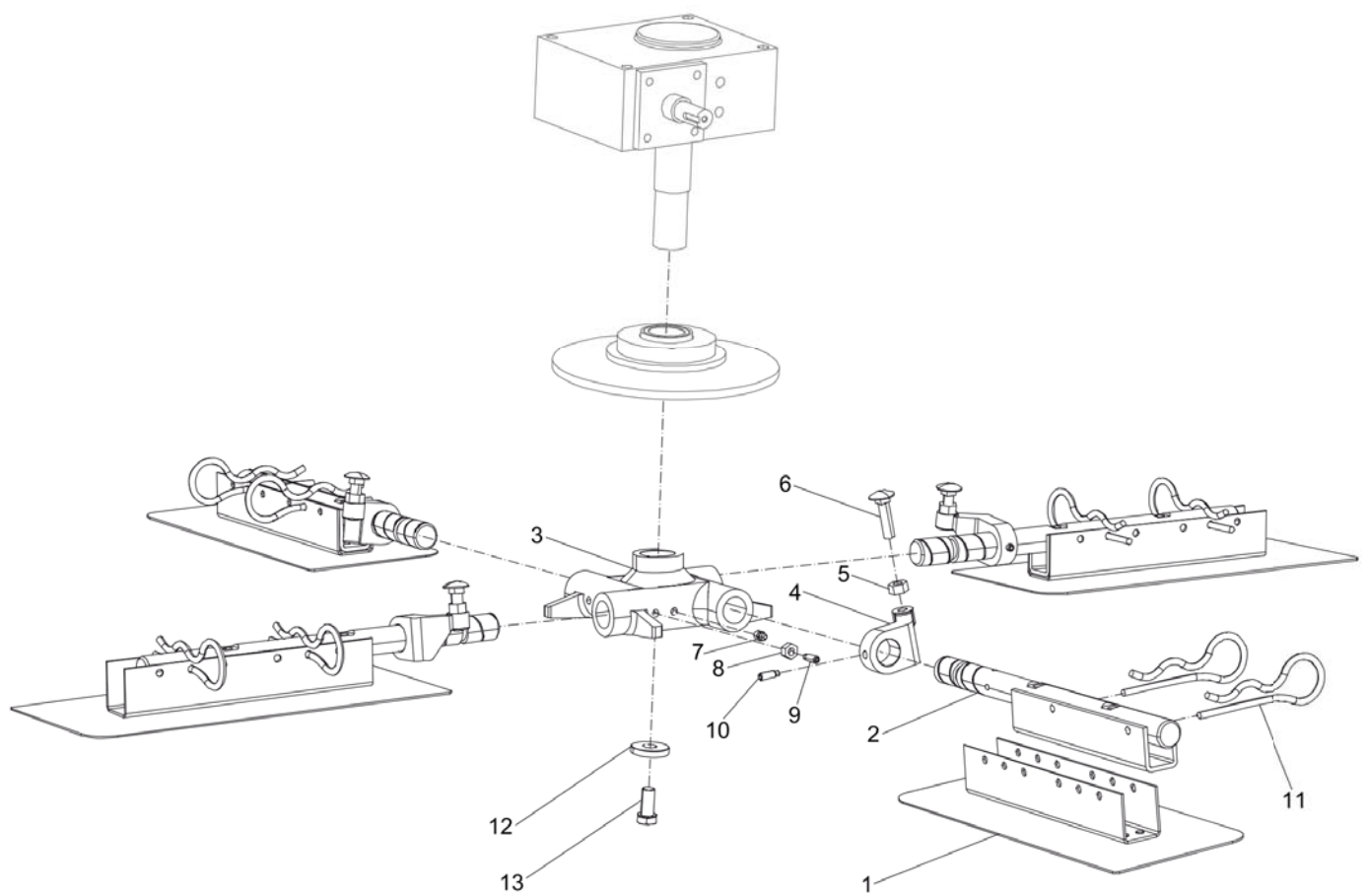
Comments for Page: Chassi and gearbox

(L)OCAL REMARKS

A | For Honda GX 160, 200

B | For Honda GX 270

Page intentionally left blank

Spare parts list Blade assembly

Item	Part No.	Name	Qty	L
1	4700002255	Trowel blade	1	A
2	4700022064	Blade arm	4	
3	4700032065	Hub	1	
4	4700046249	Arm	4	
5	-	Nut, M10 A3K	4	
6	0253305001	Carriage bolt, M10 x 40 mm 8.8	4	
7	0544110009	Grease nipple	4	
8	-	Nut, M8 A2K	4	
9	-	Stop screw, M8 x 20 mm	4	
10	-	Stop screw, M8 x 16 mm, Use LOCTITE® 243™	4	
11	0111168609	Locking clip	8	
12	-	Washer, 12 x 36 x 6 mm, 0.47 x 1.42 x 0.24 in.	1	
13	-	Screw, M12 x 25 mm 8.8 A3K	1	

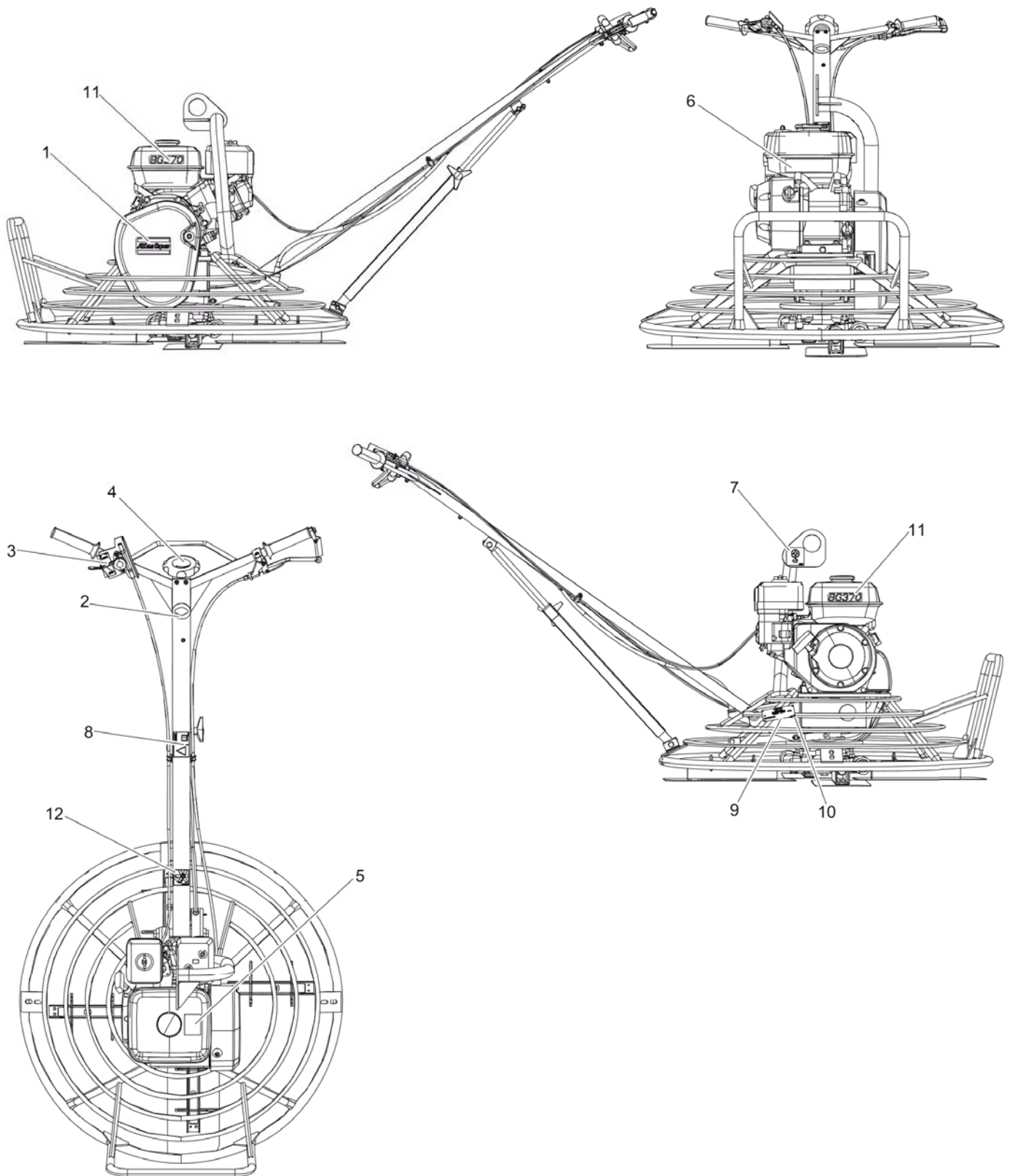
Comments for Page: Blade assembly

LOCTITE is a registered trademark of Henkel Corporation. 243 is a trademark of Henkel Corporation.

(L)OCAL REMARKS

A | Quick release, 4 blades included

Page intentionally left blank

Spare parts list Labels, short handle

Refer to Parts Online for the most up to date information. The printed information might be outdated.

Thu Sep 04 06:18:20 UTC 2014

Item	Part No.	Name	Qty	L
1	3382010039	Product label, "Atlas Copco"	1	A
2	4700281898	Decal "EAR PROTECTION"	1	B
3	4700046758	Label, stop-run	1	C
4	4700045902	Label, blade angle	1	D
5	4700046764	Label, tilted position	1	E
6	4700046239	Label, remove disc	1	F
7	4700357587	Decal "LIFT POINT"	1	G
8	4700904680	Decal "Read instruction manual"	1	
9	-	Data plate	1	
10	-	Drive screw	4	
11	3382010566	Product label	2	H
12	3382010902	Label, cutting hazards	1	I

Comments for Page: Labels, short handle

(L)OCAL REMARKS

A | "Atlas Copco"

B | Ear protection

C | Stop - Run

D | Increase - Decrease

E | Tilted position

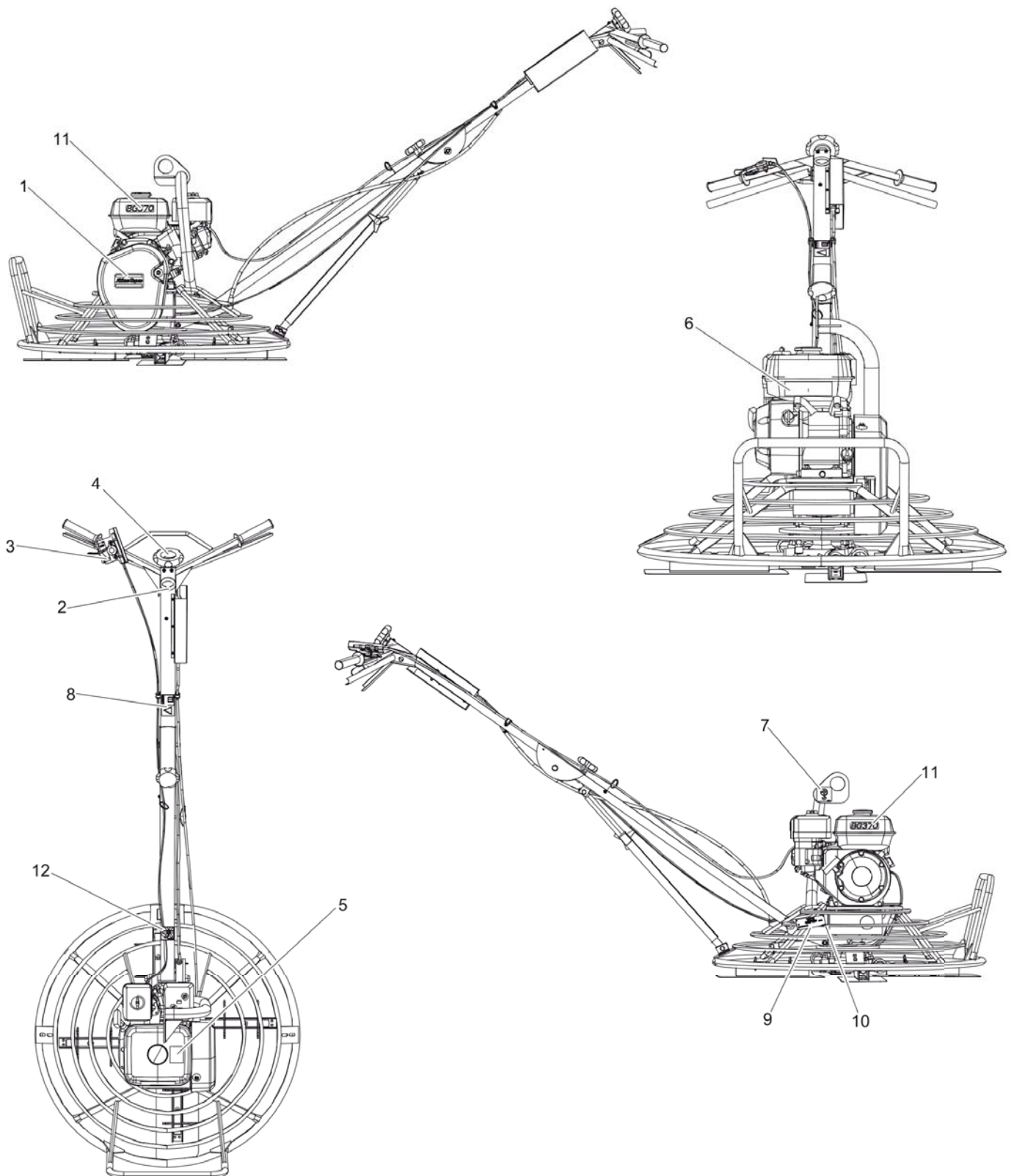
F | Remove disc

G | Lift point

H | BG370

I | Cutting hazards

Page intentionally left blank

Spare parts list Labels, long handle

Refer to Parts Online for the most up to date information. The printed information might be outdated.

Thu Sep 04 06:18:22 UTC 2014

Item	Part No.	Name	Qty	L
1	3382010039	Product label, "Atlas Copco"	1	A
2	4700281898	Decal "EAR PROTECTION"	1	B
3	4700046758	Label, stop-run	1	C
4	4700045902	Label, blade angle	1	D
5	4700046764	Label, tilted position	1	E
6	4700046239	Label, remove disc	1	F
7	4700357587	Decal "LIFT POINT"	1	G
8	4700904680	Decal "Read instruction manual"	1	
9	-	Data plate	1	
10	-	Drive screw	4	
11	3382010566	Product label	2	H
12	3382010902	Label, cutting hazards	1	I

Comments for Page: Labels, long handle

(L)OCAL REMARKS

A | "Atlas Copco"

B | Ear protection

C | Stop - Run

D | Increase - Decrease

E | Tilted position

F | Remove disc

G | Lift point

H | BG370

I | Cutting hazards

Page intentionally left blank

Accessories Consumables

**NO DRAWING
AVAILABLE
FOR THIS BOM**

Item	Part No.	Name	Qty	L
-	4700031937	Floating disc, 2.5 mm (0.10 in.), thick	1	
-	4700033036	Floating disc, 3 mm (0.12 in.), thick	1	
-	3382100060	Floating blade	1	A
-	4700002255	Trowel blade	1	B

Comments for Page: Consumables

(L)OCAL REMARKS

A | 4 blades included

B | Quick release, 4 blades included

Page intentionally left blank

Kits Service kit, Honda GX 160

**NO DRAWING
AVAILABLE
FOR THIS BOM**

Item	Part No.	Name	Qty	L
1	3382100098	One year service kit	1	
.1	4700239323	Air filter, cpl	1	
.2	4700238303	Gasket	1	
.3	4700239374	Starter rope	1	
.4	4700924842	Spark plug	1	
.5	4700238301	Gasket	1	

Kits Service kit, Honda GX 200

**NO DRAWING
AVAILABLE
FOR THIS BOM**

Item	Part No.	Name	Qty	L
1	3382100099	One year service kit	1	
.1	4700239064	Air cleaner element, cpl	1	
.2	4700238303	Gasket	1	
.3	4700239374	Starter rope	1	
.4	4700239565	Spark plug	1	
.5	4700238301	Gasket	1	

Kits Service kit, Honda GX 270

**NO DRAWING
AVAILABLE
FOR THIS BOM**

Item	Part No.	Name	Qty	L
1	3382100100	One year service kit	1	
.1	4700937499	Air filter, cpl	1	
.2	4700238303	Gasket	1	
.3	4700239374	Starter rope	1	
.4	4700924842	Spark plug	1	
.5	3382100022	Gasket	1	

Kits Maintenance kit, Honda GX 160 and 200, short handle

**NO DRAWING
AVAILABLE
FOR THIS BOM**

Item	Part No.	Name	Qty	L
1	3382100011	Maintenance kit	1	
.-	4700002808	Belt, M=s XPA 732 mm	1	
.-	4700047869	Gas wire	1	
.-	4700047870	Clutch wire	1	
.-	4812060196	Blade adjusting wire	1	

Kits Maintenance kit, Honda GX 200, long handle

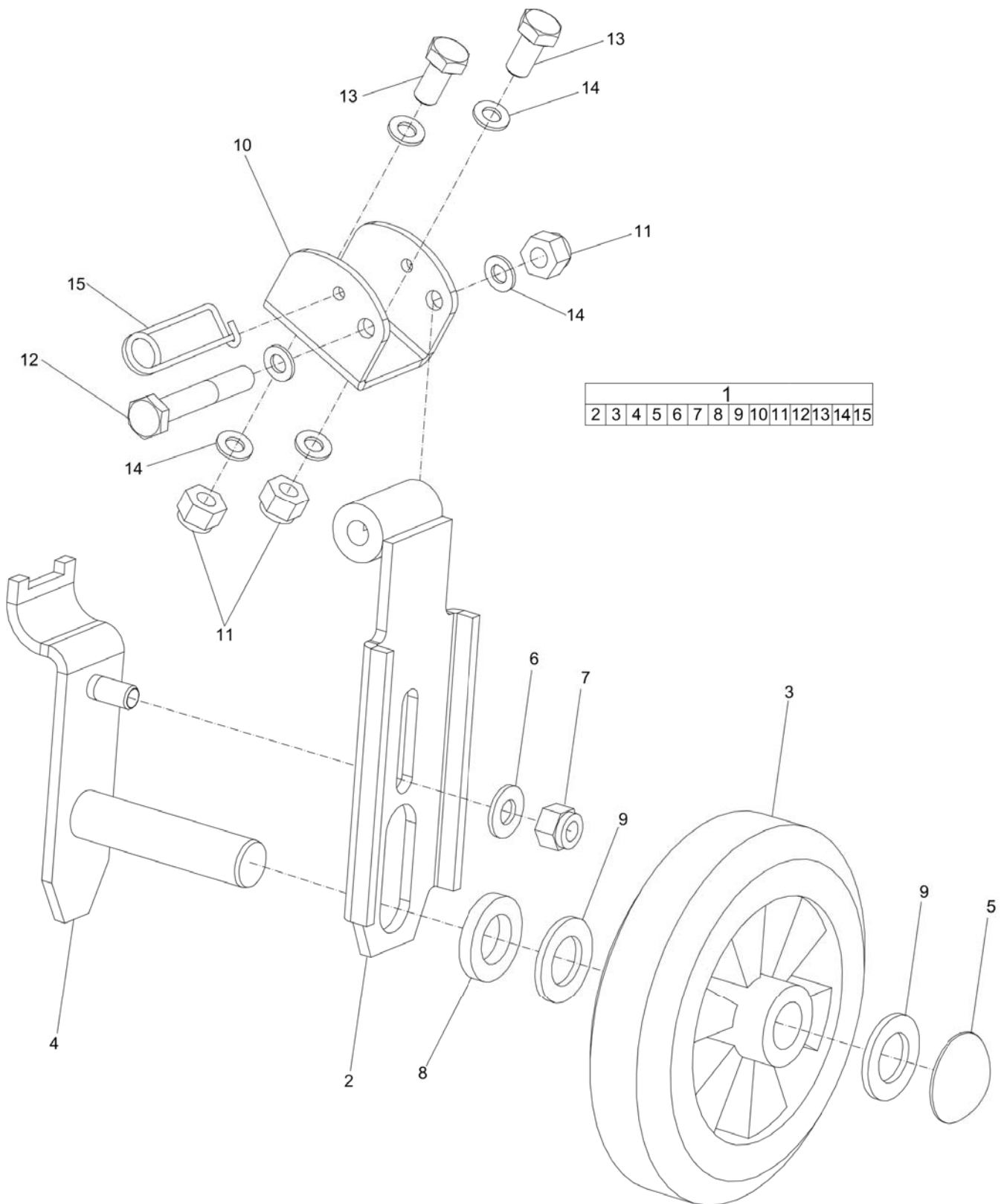
**NO DRAWING
AVAILABLE
FOR THIS BOM**

Item	Part No.	Name	Qty	L
1	3382100012	Maintenance kit	1	
.-	4700002808	Belt, M=s XPA 732 mm	1	
.-	4700048527	Throttle wire	1	
.-	4700048357	Clutch wire	1	
.-	4812060248	Blade adjusting wire	1	

Kits Maintenance kit, Honda GX 270, long handle

**NO DRAWING
AVAILABLE
FOR THIS BOM**

Item	Part No.	Name	Qty	L
1	3382100013	Maintenance kit	1	
.-	4700002372	Belt, Optibelt super SPAX 782 mm	1	
.-	4700048527	Throttle wire	1	
.-	4700048357	Clutch wire	1	
.-	4812060248	Blade adjusting wire	1	

Kits Transport device kit

Refer to Parts Online for the most up to date information. The printed information might be outdated.

Thu Sep 04 06:18:36 UTC 2014

Item	Part No.	Name	Qty	L
1	3382010573	Transport device kit	1	
.2	4812060173	Arm	2	
.3	4700001755	Wheel	2	
.4	3382010671	Bracket	2	
.5	4700001950	Locking washer	2	
.6	--	Washer, 10.5 x 22 x 2 mm, 0.41 x 0.87 x 0.08 in. 300 HV	2	
.7	--	Lock nut, M10	2	
.8	--	Washer, 21 x 36 x 6 mm 300 HV, 0.83 x 1.42 x 0.24 in. 300 HV	2	
.9	--	Washer, 21 x 36 x 3 mm 300 HV, 0.83 x 1.42 x 0.12 in. 300 HV	4	
.10	4812060171	Attachment	2	
.11	--	Lock nut, M10	6	
.11	--	Lock nut, M10	6	
.12	--	Screw, M10 x 70 mm 8.8 A3K	2	
.13	--	Screw, M10 x 25 mm 8.8 A3K	4	
.14	--	Washer, 10 x 2 mm, 0.39 x 0.08 in.	12	
.15	3382010865	Hair pin	2	

Kits Bolt on blade kit

**NO DRAWING
AVAILABLE
FOR THIS BOM**

Item	Part No.	Name	Qty	L
1	3382100059	Bolt on blade kit	1	
.Not Shown	-	Trowel blade	4	
.Not Shown	-	Bolt, UNC 5/16 x 21/4 in.	8	

Kits Gear box seal kit

**NO DRAWING
AVAILABLE
FOR THIS BOM**

Item	Part No.	Name	Qty	L
1	3382100234	Gear box seal kit	1	
2	-	Cover seal, 62 mm	1	
3	-	Cover seal, 60 mm	1	
4	-	Shaft seal, 45 mm	1	
5	-	Shaft seal, 30 mm	1	

Any unauthorized use or copying of the contents or any part thereof is prohibited.
This applies in particular to trademarks, model denominations, part numbers, and drawings.

