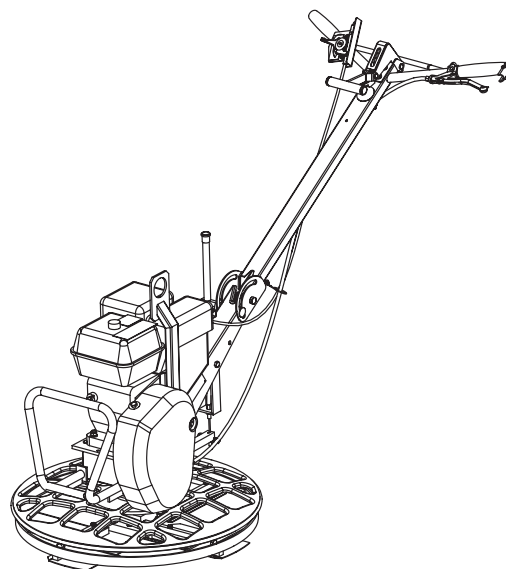


Spare parts list

Trowel

	Valid from serial number
BG240 H4-S-QP	BGB52000001
BG240 H4-S-TP	BGB52000001
BG240 H4-S-QP	BGF0000001
BG240 H4-S-TP	BGF0000001



General information

This spare parts list applies to the following:

Part number	Description
3382 0001 00	Trowel BG240 H4-S-QP
3382 0000 99	Trowel BG240 H4-S-TP

Use only authorized parts. Any damage or malfunction caused by the use of unauthorized parts is not covered by Warranty or Product Liability. Any unauthorized use or copying of the contents or any part thereof is prohibited. This applies in particular to trademarks, model denominations, part numbers, and drawings.

Instructions for use

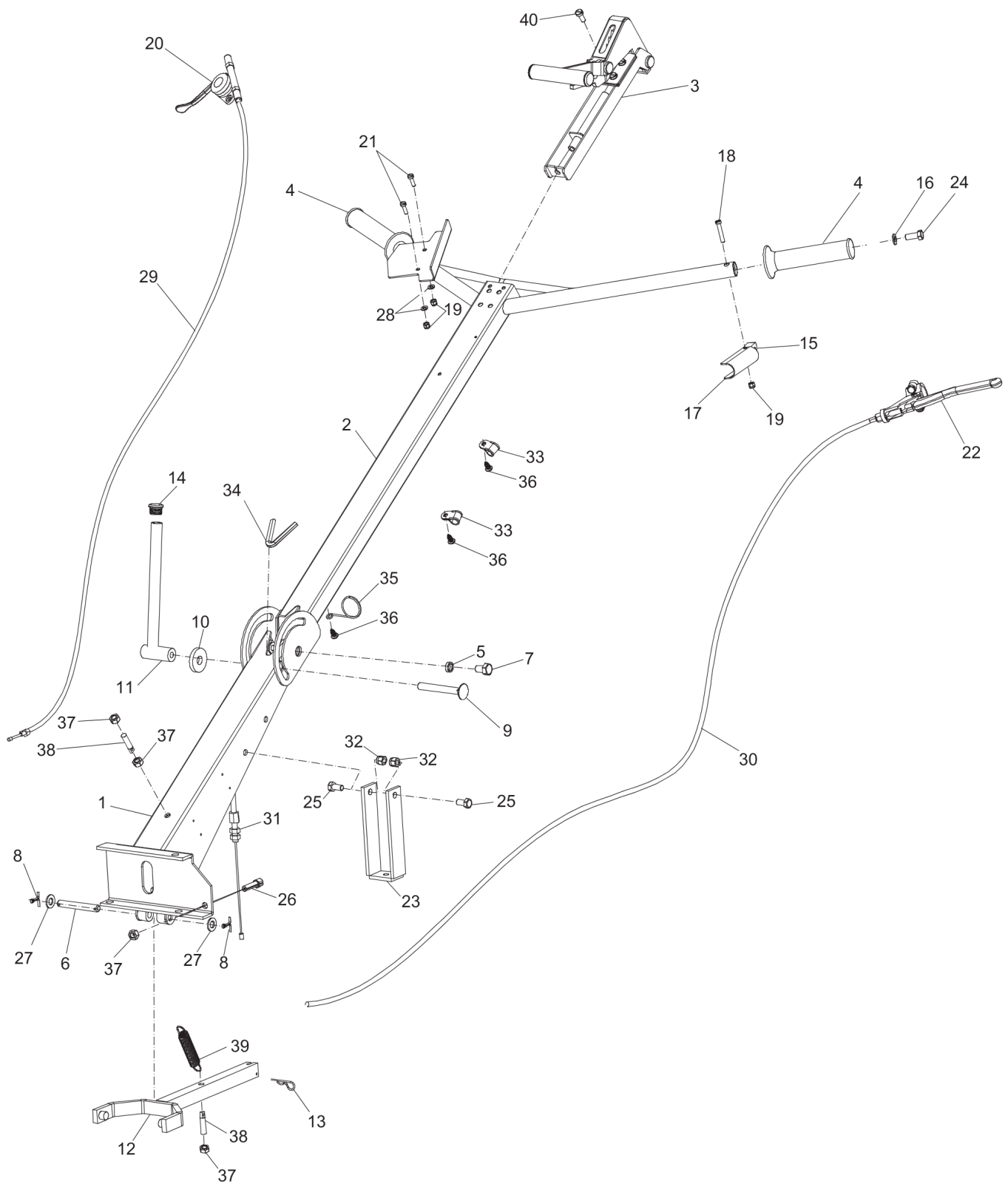
This spare parts list contains no safety regulations and is merely intended to assist in the ordering of spare parts.

For information about operating, servicing, or repairing, the relevant Safety and operating instructions must be consulted at all costs.

Please observe the safety instructions listed in the relevant Safety and operating instructions!

Contents

Spare parts list	4
Handle, quick pitch	4
Handle, twist pitch	7
Engine installation, Honda GX 120	11
Support and gearbox	15
Power transmission, Honda GX 120	18
Protective ring	22
Blade assembly	24
Labels, quick pitch	26
Labels, twist pitch	28
Accessories	30
Consumables	30
Transport device	32
Kits	34
Service kit, Honda GX 120	34
Maintenance kit (yearly recommend)	36

Spare parts list Handle, quick pitch

Refer to Parts Online for the most up to date information. The printed information might be outdated.

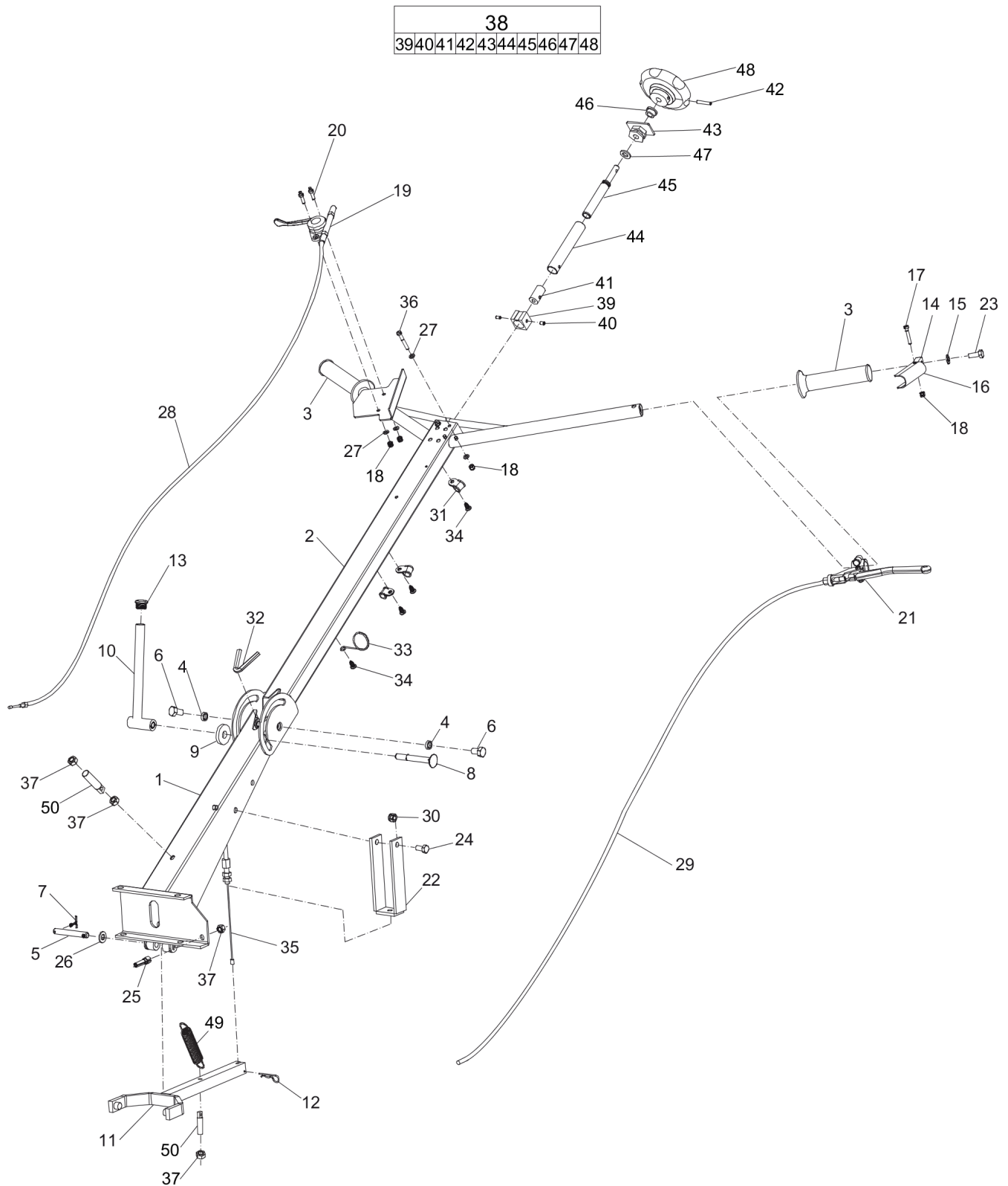
Mon Mar 31 08:56:36 UTC 2014

Item	Part Number	Name	Qty	L
1	3382010467	Handle bracket	1	
2	3382010466	Handle upper part	1	
3	4700033085	Quick pitch	1	
4	4700001213	Rubber handle	2	
5	4700049052	Spacer sleeve	2	
6	4700047860	Shaft	1	
7	-	Screw, M10 x 16 mm	2	
8	0111127903	Split pin, 3.2 x 28 mm, 0.13 x 1.10 in.	2	
9	0226991525	Square neck bolt	1	
10	-	Washer, 13 x 36 x 6 mm, 0.51 x 1.42 x 0.24 in.	1	
11	4700049051	Locking lever	1	
12	4700033063	Fork	1	
13	0111168606	LOCKING CLIP	1	
14	4700002816	Tube plug	1	
15	4700364758	Handle holder	1	
16	-	Washer, 8.4 x 16 x 1.6 mm, 0.33 x 0.63 x 0.06 in.	1	
17	4700364759	Handle	1	
18	-	Screw, M5 x 30 mm	1	
19	0291112814	Lock nut, M5	3	
20	4700001739	Trottle control	1	
21	-	Screw, M5 x 16 mm	2	
22	4700002227	Clutch handle	1	
23	4700048986	Bow	1	
24	-	Screw, M8 x 20 mm	1	
25	-	Screw, M8 x 16 mm	2	
26	4700002228	Set screw	1	
27	-	Washer, 10.5 x 20 x 2 mm, 0.41 x 0.79 x 0.08 in.	2	
28	-	Washer, 5.3 x 10 x 1 mm, 0.21 x 0.40 x 0.04 in.	2	
29	4700048979	Throttle wire	1	
30	4700048978	Clutch wire	1	
31	4700049000	Adjusting wire	1	

Refer to Parts Online for the most up to date information. The printed information might be outdated.

Mon Mar 31 08:56:52 UTC 2014

Item	Part Number	Name	Qty	L
32	-	Lock nut, M8	2	
33	0346100049	Pipe clamp	2	
34	4700002627	Edge protection	1	
35	4700046431	Wire holder	1	
36	0226313903	Tapping screw	3	
37	-	Nut, M8	4	
38	4700000168	Bracket	2	
39	3382011239	Spring	1	
40	-	Screw, M6 x 14 mm	4	

Spare parts list Handle, twist pitch

Refer to Parts Online for the most up to date information. The printed information might be outdated.

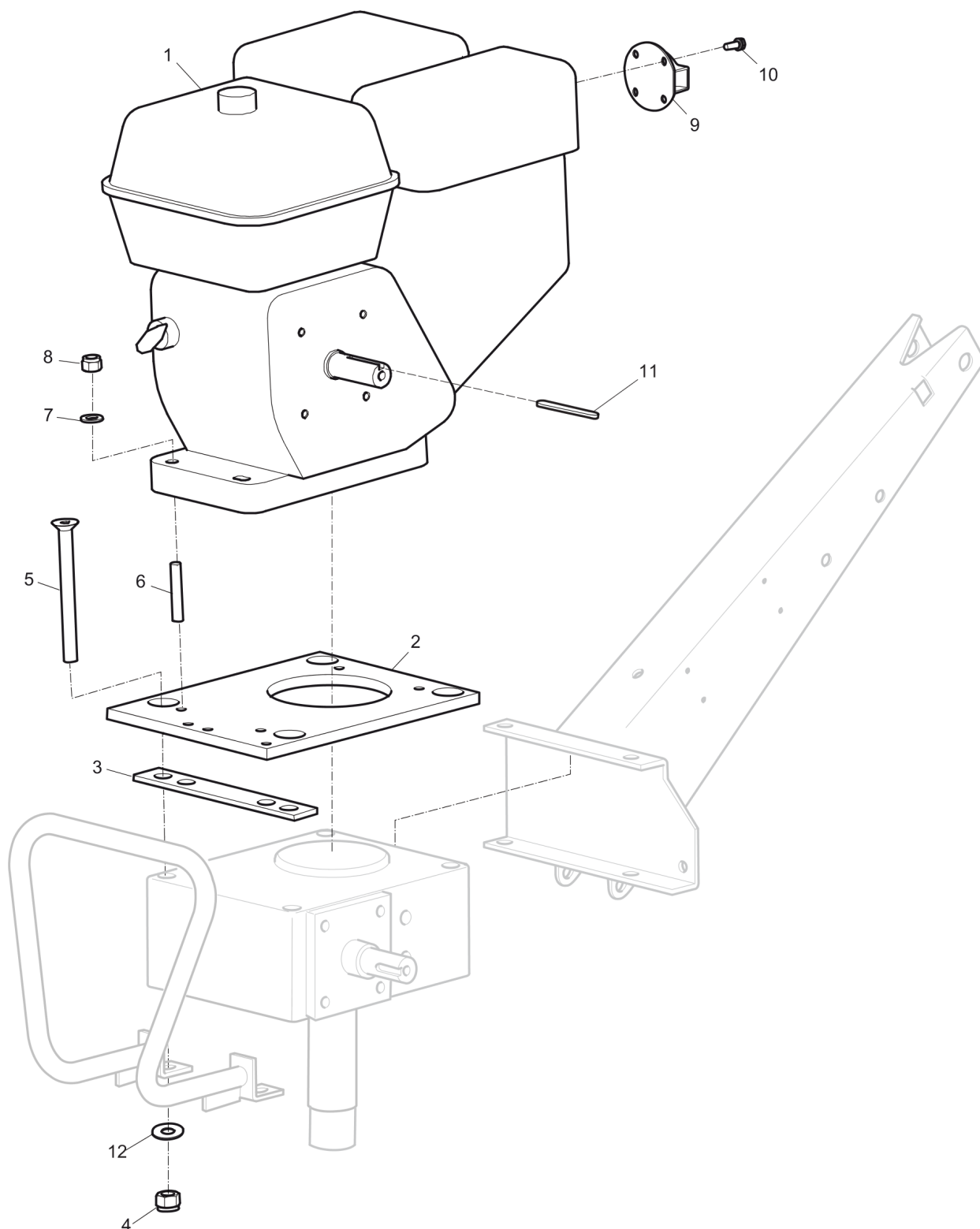
Mon Mar 31 08:56:54 UTC 2014

Item	Part Number	Name	Qty	L
1	3382010467	Handle bracket	1	
2	3382010466	Handle upper part	1	
3	4700001213	Rubber handle	2	
4	4700049052	Spacer sleeve	2	
5	4700047860	Shaft	1	
6	-	Screw, M10 x 16 mm	2	
7	0111127903	Split pin, 3.2 x 28 mm, 0.13 x 1.10 in.	2	
8	0226991525	Square neck bolt	1	
9	-	Washer, 13 x 36 x 6 mm, 0.51 x 1.42 x 0.24 in.	1	
10	4700049051	Locking lever	1	
11	4700033063	Fork	1	
12	0111168606	LOCKING CLIP	1	
13	4700002816	Tube plug	1	
14	4700364758	Handle holder	1	
15	-	Washer, 8.4 x 16 x 1.6 mm, 0.33 x 0.63 x 0.06 in.	1	
16	4700364759	Handle	1	
17	-	Screw, M5 x 30 mm	1	
18	-	Lock nut, M5	5	
19	4700001739	Trottle control	1	
20	-	Screw, M5 x 16 mm	2	
21	4700002227	Clutch handle	1	
22	4700048986	Bow	1	
23	-	Screw, M8 x 20 mm 8.8	1	
24	-	Screw, M8 x 16 mm 8.8	2	
25	4700002228	Set screw	1	
26	-	Washer, 10.5 x 20 x 2 mm, 0.41 x 0.79 x 0.04 in.	2	
27	-	Washer, 5.3 x 10 x 1 mm, 0.21 x 0.40 x 0.04 in.	6	
28	4700048979	Throttle wire	1	
29	4700048978	Clutch wire	1	
30	-	Lock nut, M8	2	
31	0346100049	Pipe clamp	3	

Refer to Parts Online for the most up to date information. The printed information might be outdated.

Mon Mar 31 08:57:04 UTC 2014

Item	Part Number	Name	Qty	L
32	4700002627	Edge protection	1	
33	4700046431	Wire holder	1	
34	0226313903	Tapping screw	4	
35	4700049000	Adjusting wire	1	
36	-	Screw, M5 x 40 mm	2	
37	3737373737	Nut, M8	4	
38	3382100061	Blade adjuster, complete	1	
.39	--	Guiding	1	
.40	--	Stop screw, M5 x 12 mm	2	
.41	--	Wire lock	1	
.42	--	Spring pin, 5 x 30 mm, 0.20 x 1.18 in.	1	
.43	--	Bearing support	1	
.44	--	Adjusting nut	1	
.45	--	Adjusting screw	1	
.46	--	Flange bearing	1	
.47	--	Washer	1	
.48	--	Knob	1	
49	3382011239	Spring	1	
50	4700000168	Bracket	2	

Spare parts list Engine installation, Honda GX 120

Refer to Parts Online for the most up to date information. The printed information might be outdated.

Mon Mar 31 08:57:05 UTC 2014

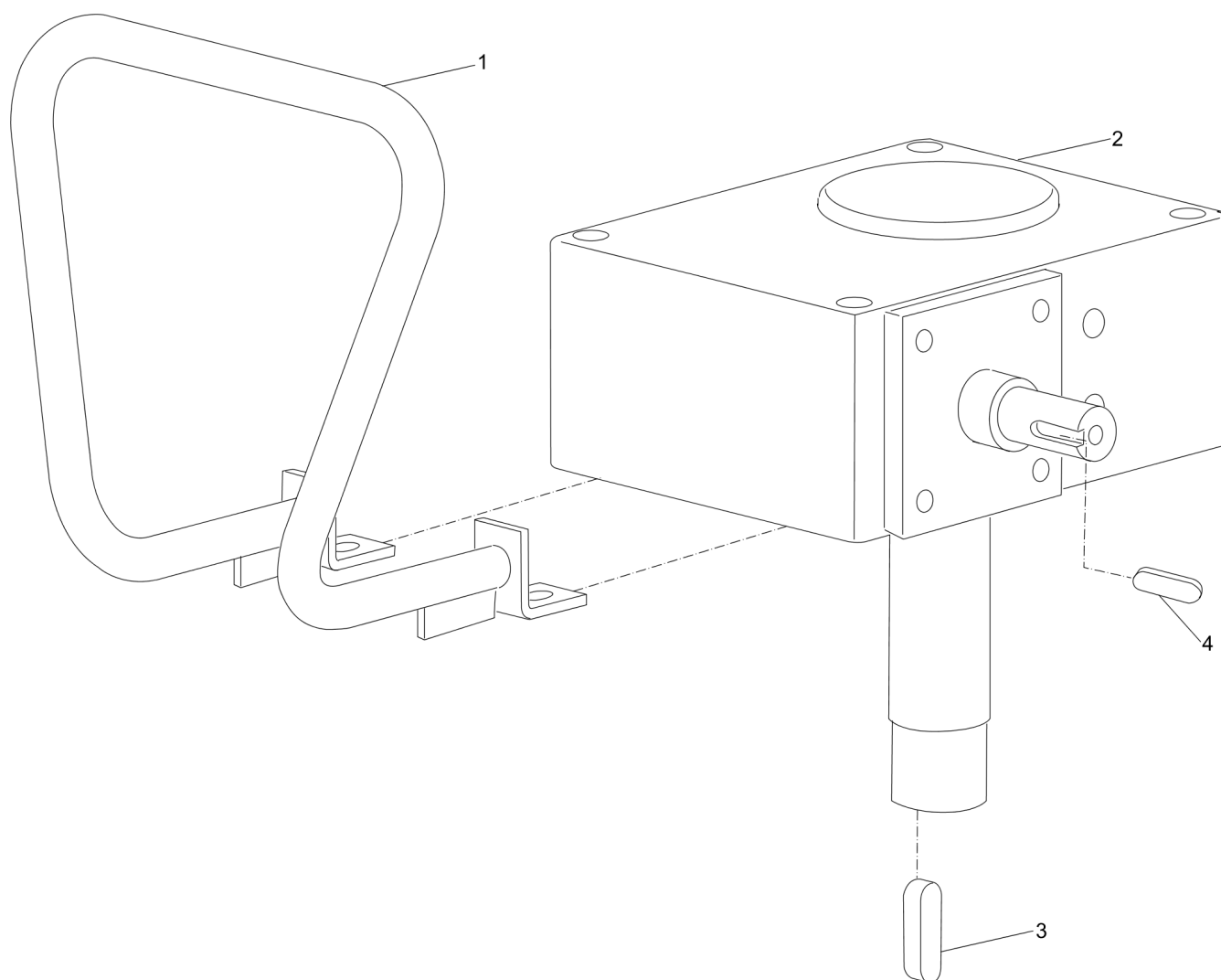
Item	Part Number	Name	Qty	L
1	4700282190	Engine	1	A
2	3382010468	Plate	1	
3	3382010557	Spacer plate	1	
4	-	Lock nut, M10	4	
5	4700186573	Screw, M10 x 105 mm	4	
6	0248998009	Stud, M8 x 40 mm Use LOCTITE®243TM	4	
7	-	Washer, 8.4 x 16 x 1.6 mm, 0.33 x 0.63 x 0.06 in.	4	
8	-	Lock nut, M8	4	
9	4700239062	Deflector	1	
10	-	Tapping screw, 4 x 8 mm, 0.16 x 0.31 in.	4	
11	4700239342	Flat key	1	
12	-	Washer, 10.5 X 20 X 2 mm, 0.41 x 0.79 x 0.08 in.	4	

Comments for Page: Engine installation, Honda GX 120

LOCTITE is a registered trademark of Henkel Corporation. 243 is a trademark of Henkel Corporation.

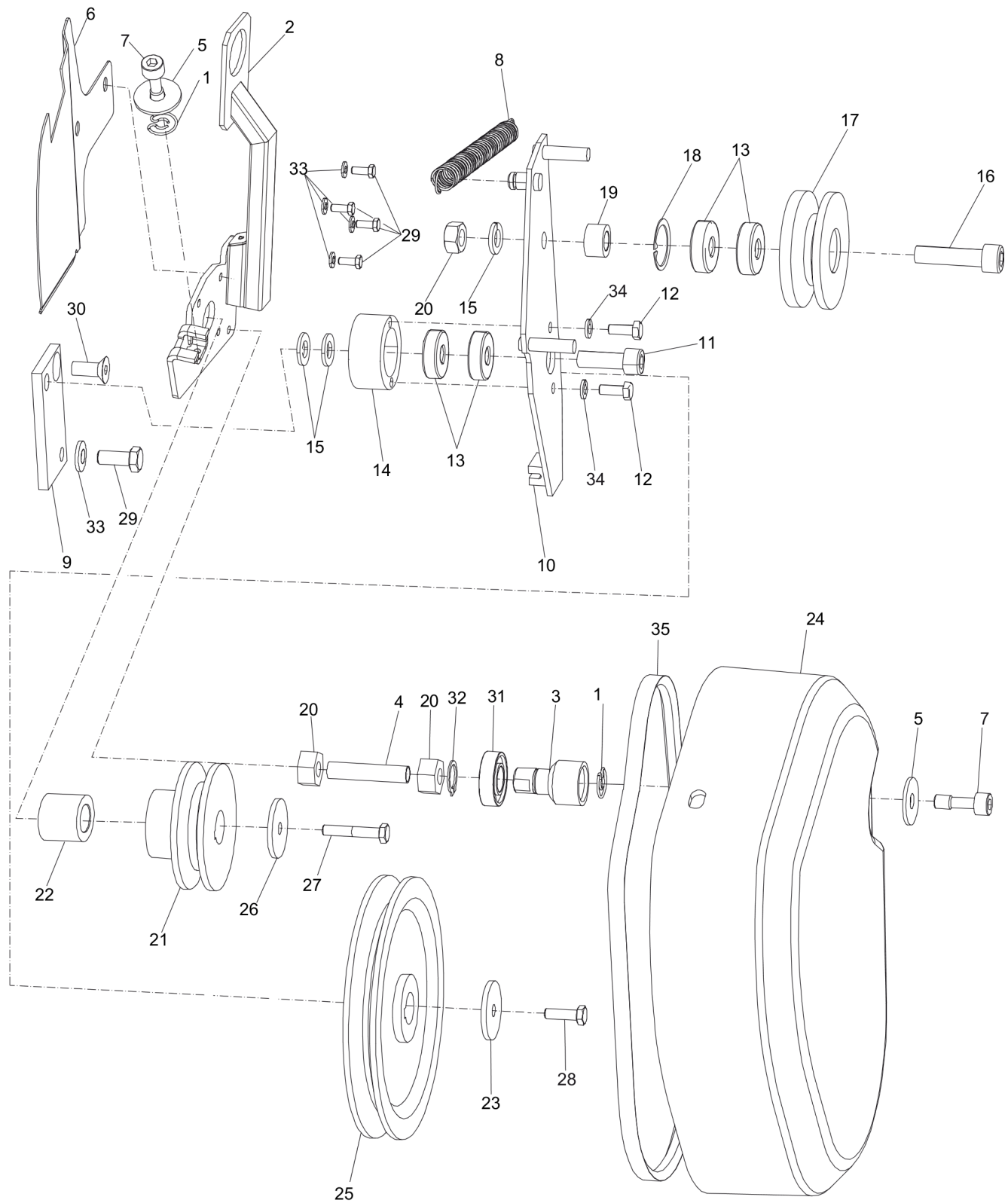
(L)OCAL REMARKS

A | Honda GX120

Spare parts list Support and gearbox

Item	Part Number	Name	Qty	L
1	3382010462	Support arch	1	
2	4700002858	Gear box	1	
3	0337716000	PARALLEL KEY	1	
4	0337212000	Flat key, 6 x 6 x 25 mm, 0.24 x 0.24 x 0.98 in.	1	

Spare parts list Power transmission, Honda GX 120



Refer to Parts Online for the most up to date information. The printed information might be outdated.

Mon Mar 31 08:57:14 UTC 2014

Item	Part Number	Name	Qty	L
1	4812070431	Lock spring	1	
2	3382010463	Lifting hook	1	
3	4812060274	Holder	1	
4	4812060302	Rod, M10 x 48 mm 8.8	1	
5	-	Washer, 8 x 30 mm, 0.31 x 1.18 in.	2	
6	3382010834	Safety plate	1	
7	4812060278	Captive screw	2	
8	4700047871	Pull spring	1	
9	4700047786	Bracket	1	
10	4700047787	Belt tensioner	1	
11	-	Cap screw, M10 x 30 mm 8.8	1	
12	-	Screw, M6 x 20 mm 8.8	2	
13	4150190500	Ball bearing	4	
14	4700047789	Bearing housing	1	
15	-	Washer, 10 x 2 mm, 0.39 x 0.08 in.	3	
16	-	Cap screw, M10 x 40 mm 8.8	1	
17	4700047790	Pulley	1	
18	0335213200	Retaining ring	1	
19	4700048025	Spacer	1	
20	-	Washer, 10 x 2 mm, 0.39 x 0.08 in.	3	
21	4812060194	Pulley	1	
22	4700047867	Spacer	1	
23	-	Washer, 6.5 x 30 x 4 mm, 0.26 x 1.18 x 0.16 in. 300 HV	1	
24	3382010647	Belt cover	1	
25	4700032629	Belt wheel	1	
26	-	Washer, 6.5 x 30 x 4 mm, 0.26 x 1.18 x 0.16 in. 300 HV	1	
27	-	Screw, M8 x 35 mm 8.8 Use LOCTITE® 243TM	1	
28	-	Screw, M6 x 20 mm 8.8 Use LOCTITE® 243TM	1	
29	-	Screw, M8 x 20 mm 8.8	5	

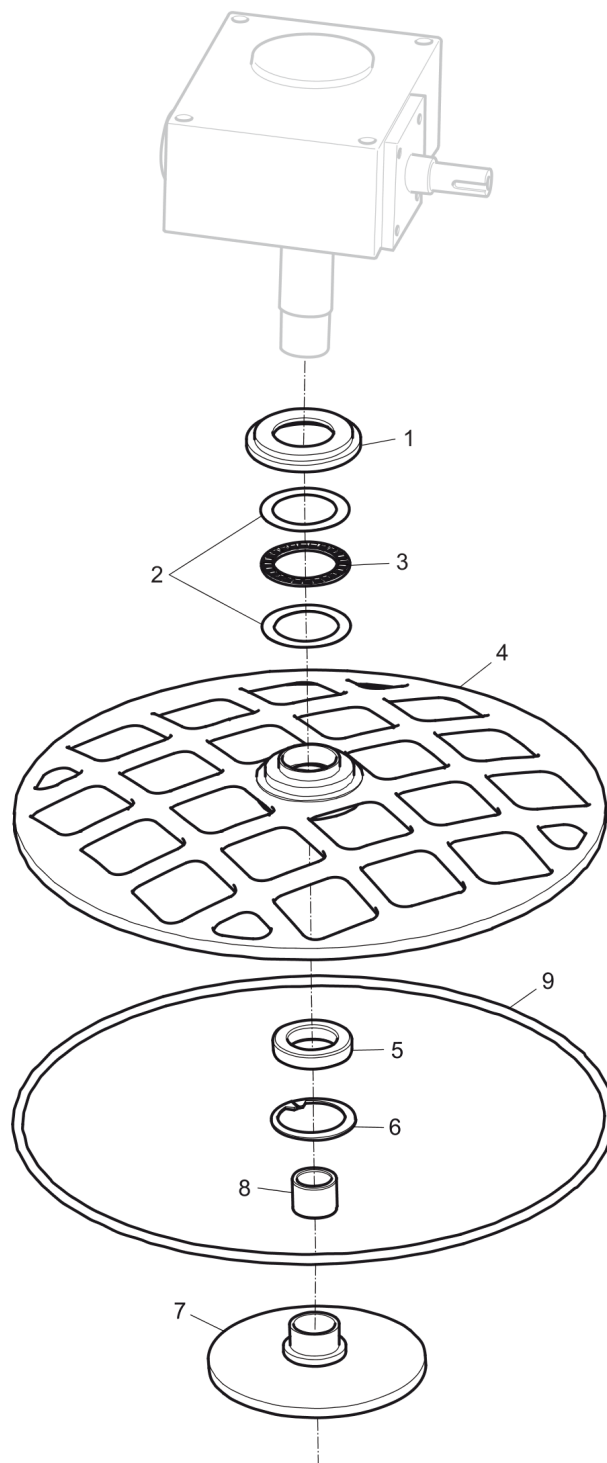
Refer to Parts Online for the most up to date information. The printed information might be outdated.

Mon Mar 31 08:57:27 UTC 2014

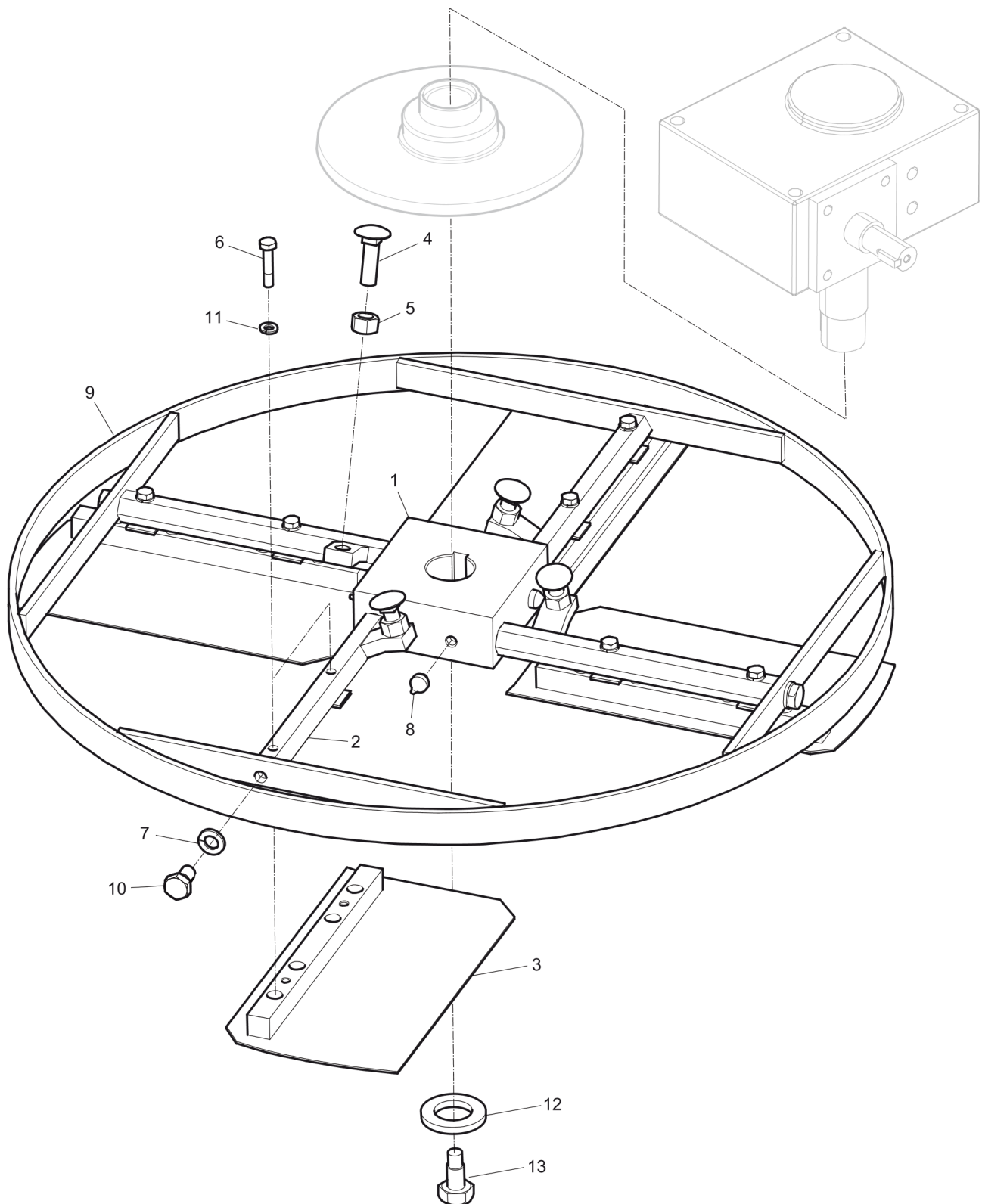
Item	Part Number	Name	Qty	L
30	-	Countersunk screw, M8 x 30 mm	1	
31	0502109002	Ball bearing	1	
32	0335111700	Retaining ring	1	
33	-	Washer, 10 x 2 mm, 0.39 x 0.08 in.	5	
34	-	Washer, 6 x 1.6 mm, 0.24 x 0.06 in.	2	
35	4700002808	Belt, M=s XPA 732 mm	1	

Comments for Page: Power transmission, Honda GX 120

LOCTITE is a registered trademark of Henkel Corporation. 243 is a trademark of Henkel Corporation.

Spare parts list Protective ring

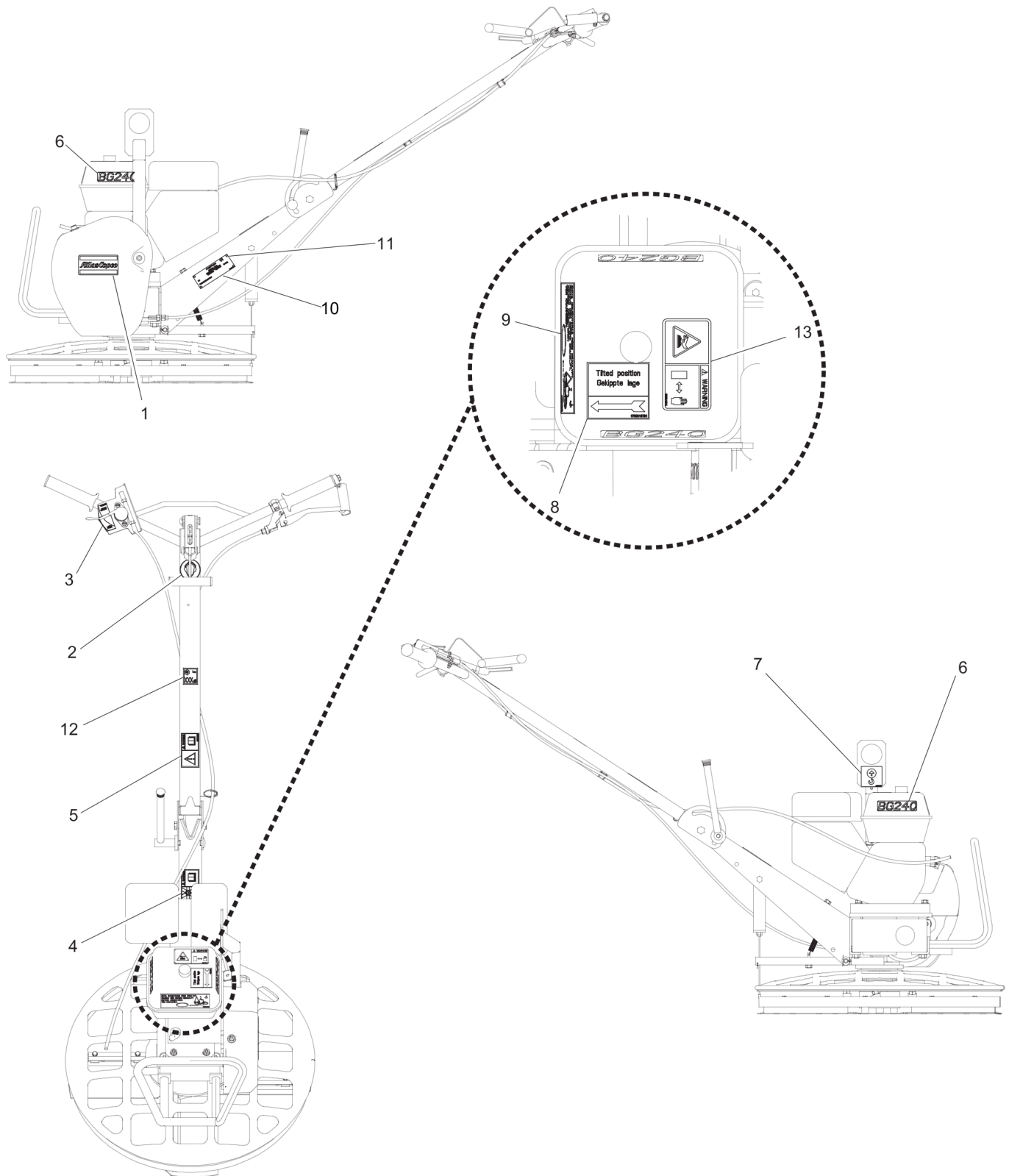
Item	Part Number	Name	Qty	L
1	4700048926	Pressing sleeve, 116 x 15 mm, 4.57 x 0.60 in.	1	
2	4700000166	Thrust washer, AS 6590	2	
3	4700000165	Thrust bearing, AXK 6590	1	
4	3382010460	Protective ring	1	
5	4700000115	Ball bearing, 6010 - 2RS1	1	
6	0335216000	CIRCLIP	1	
7	4700033090	Pressure plate	1	
8	4700002225	Sleeve bearing	1	
9	4700049057	PVC ring, ø10 mm, ø0.40 in.	1	

Spare parts list Blade assembly

Refer to Parts Online for the most up to date information. The printed information might be outdated.

Mon Mar 31 08:57:34 UTC 2014

Item	Part Number	Name	Qty	L
1	4700033026	Hub	1	
2	4700033027	Blade axle	4	
3	4700048968	Trowel blades, set of four (bolt on)	1	
4	-	Square neck bolt, 10 x 35 mm, 0.40 x 1.38 in.	4	
5	-	Nut, M10	4	
6	-	Screw, M6 x 30 mm 8.8	8	
7	-	Washer, 10 x 16 mm, 0.40 x 0.63 in.	4	
8	0544110009	Grease nipple	4	
9	4700033030	Blade ring	1	
10	-	Screw, M10 x 16 mm	4	
11	-	Washer, 6 x 1.6 mm, 0.24 x 0.06 in.	8	
12	-	Washer, 13 x 3 mm, 0.51 x 0.12 in.	1	
13	-	Screw, M12 x 30 mm	1	

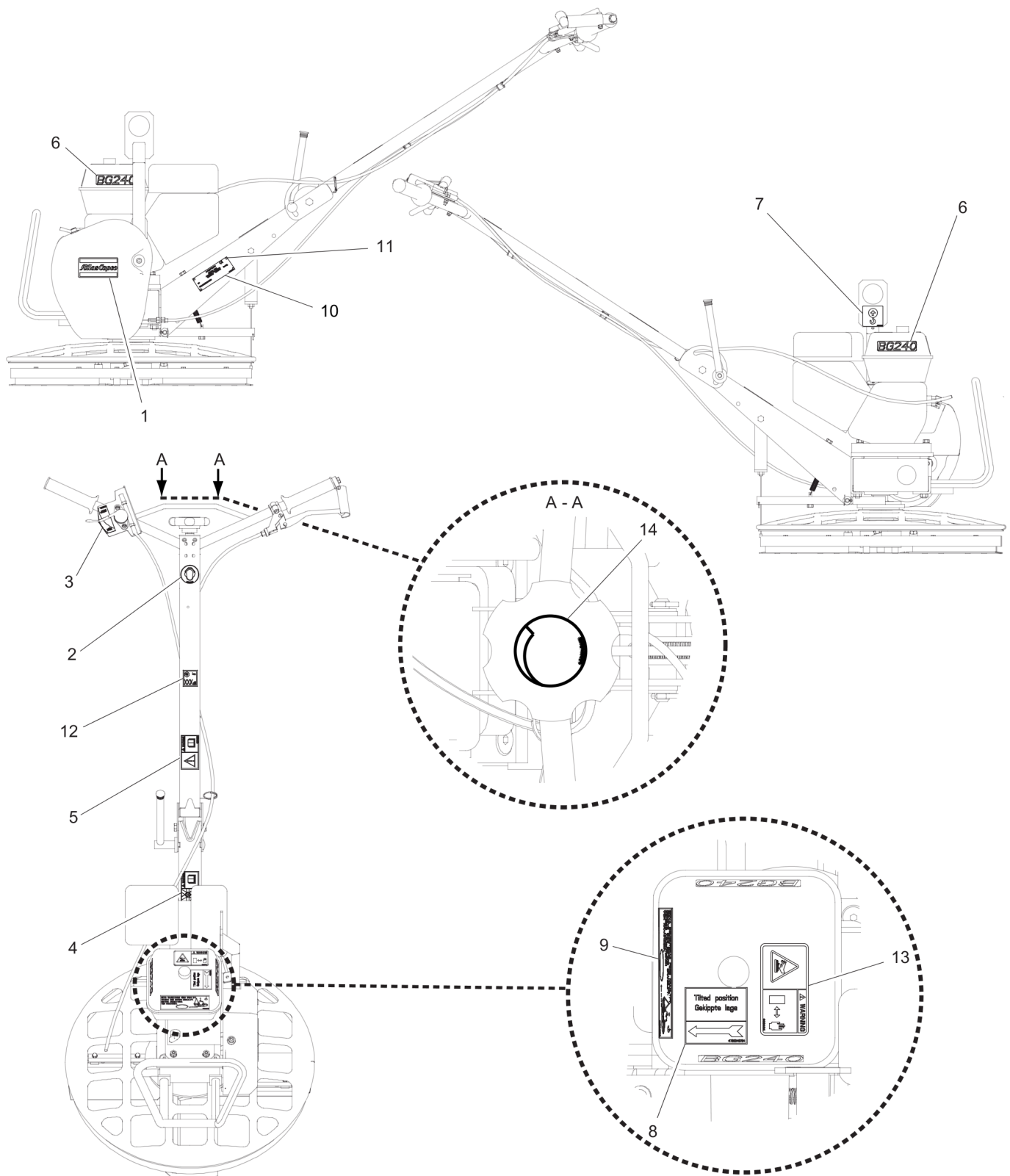
Spare parts list Labels, quick pitch

Refer to Parts Online for the most up to date information. The printed information might be outdated.

Mon Mar 31 08:57:41 UTC 2014

Item	Part Number	Name	Qty	L
1	0690110131	Product label, "Atlas Copco"	1	
2	3382010900	Label, ear protection	1	
3	4700046758	Label, stop-run	1	
4	3382011241	Label, cutting hazards	1	
5	3382010899	Safety label	1	
6	3382011198	Product label, BG240	2	
7	3382010901	Label, lift point	1	
8	4700046764	Label, tilted position	1	
9	4700046239	Label, remove disc	1	
10	-	Data plate	1	
11	-	Drive screw	4	
12	4700791286	Label, sound power level	1	
13	4700903424	Decal, hot surface	1	

Spare parts list Labels, twist pitch



Refer to Parts Online for the most up to date information. The printed information might be outdated.

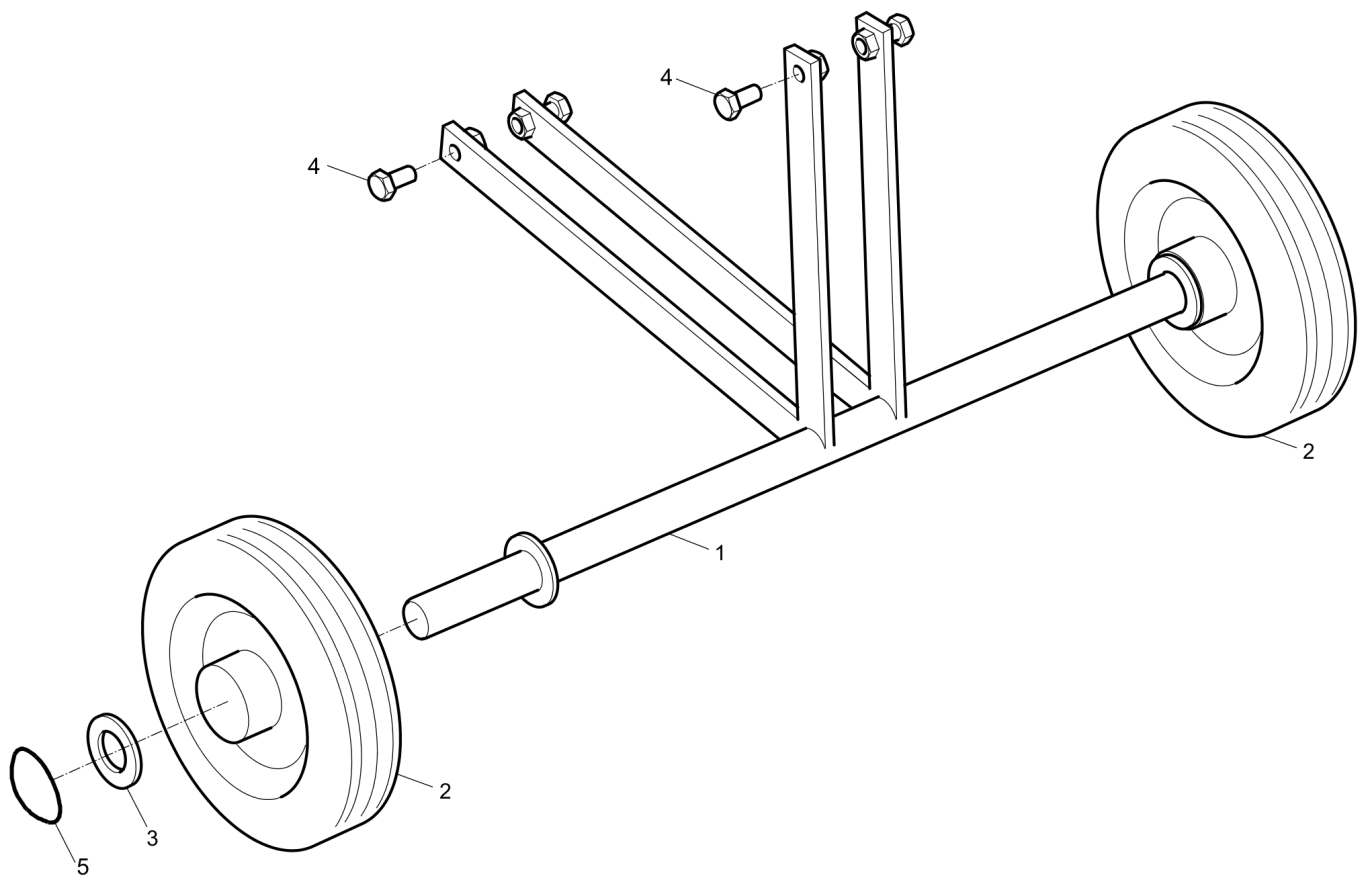
Mon Mar 31 08:57:47 UTC 2014

Item	Part Number	Name	Qty	L
1	0690110131	Product label, "Atlas Copco"	1	
2	3382010900	Label, ear protection	1	
3	4700046758	Label, stop-run	1	
4	3382011241	Label, cutting hazards	1	
5	3382010899	Safety label	1	
6	3382011198	Product label, BG240	2	
7	3382010901	Label, lift point	1	
8	4700046764	Label, tilted position	1	
9	4700046239	Label, remove disc	1	
10	-	Data plate	1	
11	-	Drive screw	4	
12	4700791286	Label, sound power level	1	
13	4700903424	Decal, hot surface	1	
14	4700045902	Label, blade angle	1	

Accessories Consumables

**NO DRAWING
AVAILABLE
FOR THIS BOM**

Item	Part Number	Name	Qty	L
-	4700033081	Floating disc	1	
-	4700048968	Trowel blades, set of four (bolt on)	1	

Accessories Transport device

Item	Part Number	Name	Qty	L
1	4700033139	Wheel frame	1	
2	4700001755	Wheel	2	
3	-	Washer, 21 x 37 x 3 mm, 0.83 x 1.46 x 0.12 in.	2	
4	-	Screw, M8 x 16 mm 8.8	4	
5	3382011202	Locking washer	2	

Kits Service kit, Honda GX 120

**NO DRAWING
AVAILABLE
FOR THIS BOM**

Item	Part Number	Name	Qty	L
1	3382100105	One year service kit	1	
.-	4700239064	Air filter	1	
.-	4700938477	Gasket	1	
.-	4700239374	Starting rope	1	
.-	4700924842	Spark plug	1	
.-	4700238301	Gasket	1	

Kits Maintenance kit (yearly recommend)

**NO DRAWING
AVAILABLE
FOR THIS BOM**

Item	Part Number	Name	Qty	L
1	3382100017	Maintenance kit	1	
.-	4700002808	Belt, M=s XPA 732 mm	1	
.-	4700048979	Throttle wire	1	
.-	4700048978	Clutch wire	1	
.-	4700049000	Adjusting wire	1	



Any unauthorized use or copying of the contents or any part thereof is prohibited.
This applies in particular to trademarks, model denominations, part numbers, and
drawings.