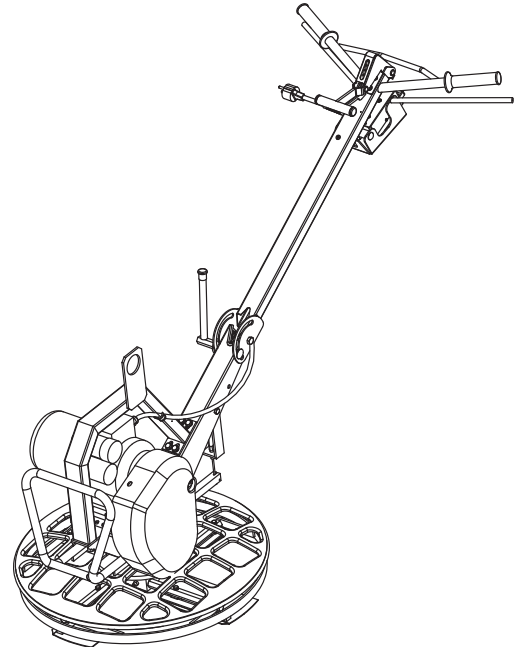


Spare parts list

Trowel

	Valid from serial number
BG240 E-S-TP	BGB52000001
BG240 E-S-QP	BGB52000001
BG240 E-S-TP	BGF0000001
BG240 E-S-QP	BGF0000001



General information

This spare parts list applies to the following:

Part number	Description
3382 0001 02	Trowel BG240 E-S-QP
3382 0001 01	Trowel BG240 E-S-TP

Use only authorized parts. Any damage or malfunction caused by the use of unauthorized parts is not covered by Warranty or Product Liability. Any unauthorized use or copying of the contents or any part thereof is prohibited. This applies in particular to trademarks, model denominations, part numbers, and drawings.

Instructions for use

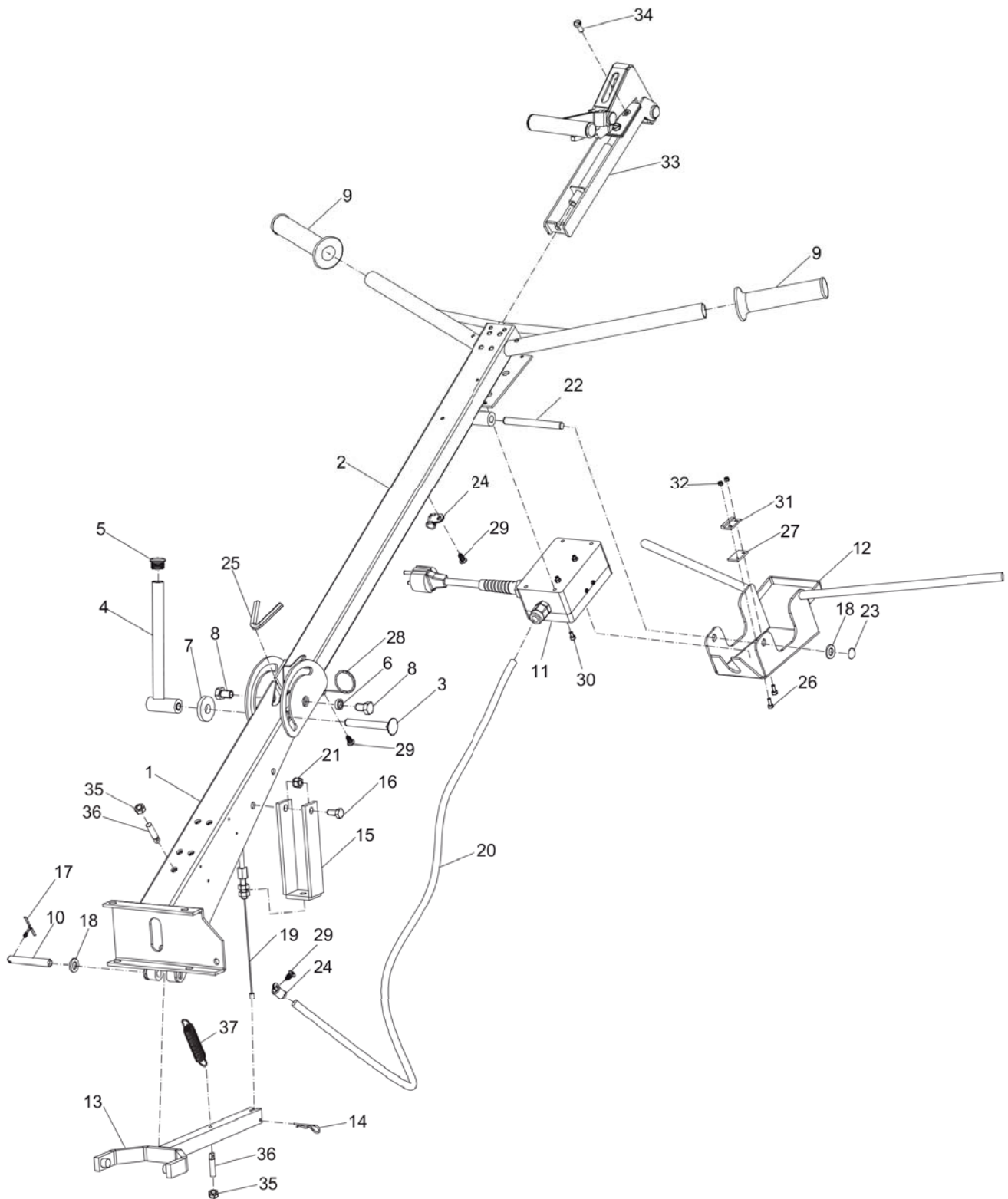
This spare parts list contains no safety regulations and is merely intended to assist in the ordering of spare parts.

For information about operating, servicing, or repairing, the relevant Safety and operating instructions must be consulted at all costs.

Please observe the safety instructions listed in the relevant Safety and operating instructions!

Contents

Spare parts list	4
Handle, quick pitch	4
Handle, twist pitch	7
Electric motor installation	11
Power transmission	14
Support and lifting device	16
Electric equipment	18
Protective ring	20
Blade assembly	22
Labels, quick pitch	24
Labels, twist pitch	26
Accessories	28
Consumables	28
Transport device	30
Kits	32
Maintenance kit (yearly recommend)	32
Wiring diagram	34
Wiring diagram	34

Spare parts list Handle, quick pitch

Refer to Parts Online for the most up to date information. The printed information might be outdated.

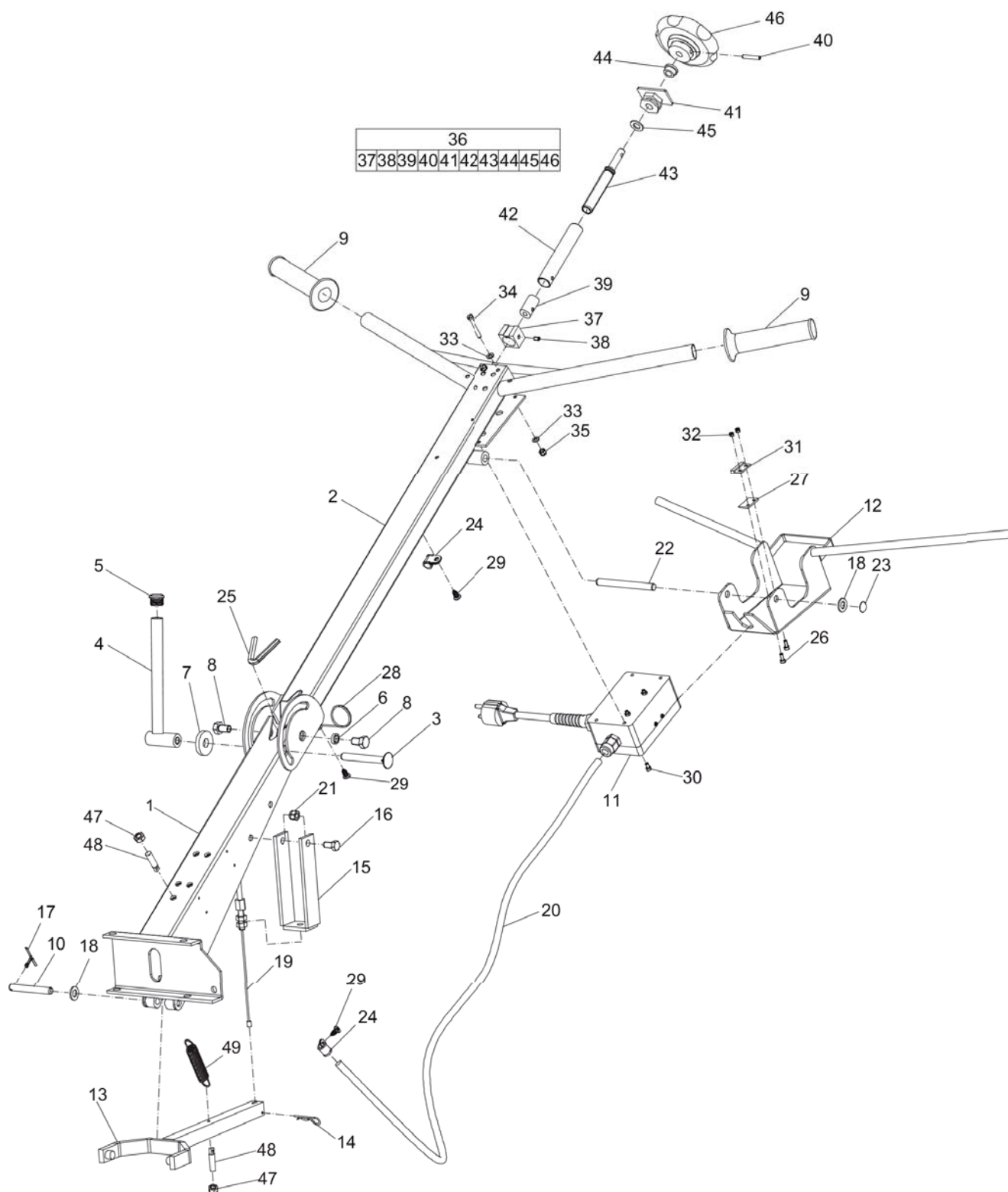
Mon Mar 10 10:53:24 UTC 2014

Item	Part Number	Name	Qty	L
1	3382010832	Handle bracket	1	
2	3382010763	Handle upper part	1	
3	0226991525	Square neck bolt	1	
4	4700049051	Locking lever	1	
5	4700002816	Tube plug	1	
6	4700049052	Spacer sleeve	2	
7	-	Washer, 12 x 6 mm, 0.47 x 0.24 in.	1	
8	-	Screw, M10 x 16 mm	2	
9	4700001213	Rubber handle	2	
10	4700047860	Shaft	1	
11	4700033101	Control box	1	
12	3382010943	Security bracket	1	
13	4700033063	Fork	1	
14	0111168606	Locking clip	1	
15	4700048986	Bow	1	
16	-	Screw, M8 x 16 mm 8.8	2	
17	0111125202	Split pin, Ø3.2 x 28 mm, Ø0.13 x 1.10 in.	2	
18	-	Washer, 10 x 2 mm, 0.40 x 0.08 in.	4	
19	4700049000	Adjusting wire	1	
20	4700001019	Wire	1	
21	-	Lock nut, M8	2	
22	3382011180	Clevis pin	1	
23	4700002817	Locking washer	2	
24	0346100049	Pipe clamp	2	
25	4700002627	Edge protection	1	
26	-	Screw, M4 x 10 mm	2	
27	4700047950	Isolating washer	1	
28	4700046431	Wire holder	1	
29	0226313903	Tapping screw	3	
30	-	Screw, M4 x 8 mm	4	
31	4700003314	Magnet	1	
32	-	Lock nut, M4	2	

Refer to Parts Online for the most up to date information. The printed information might be outdated.

Mon Mar 10 10:53:39 UTC 2014

Item	Part Number	Name	Qty	L
33	4700033085	Quick pitch	1	
34	-	Screw, M6 X 14 mm	4	
35	3535353535	Nut	2	
36	4700000168	Bracket	2	
37	3382011239	Spring	1	

Spare parts list Handle, twist pitch

Refer to Parts Online for the most up to date information. The printed information might be outdated.

Mon Mar 10 10:53:41 UTC 2014

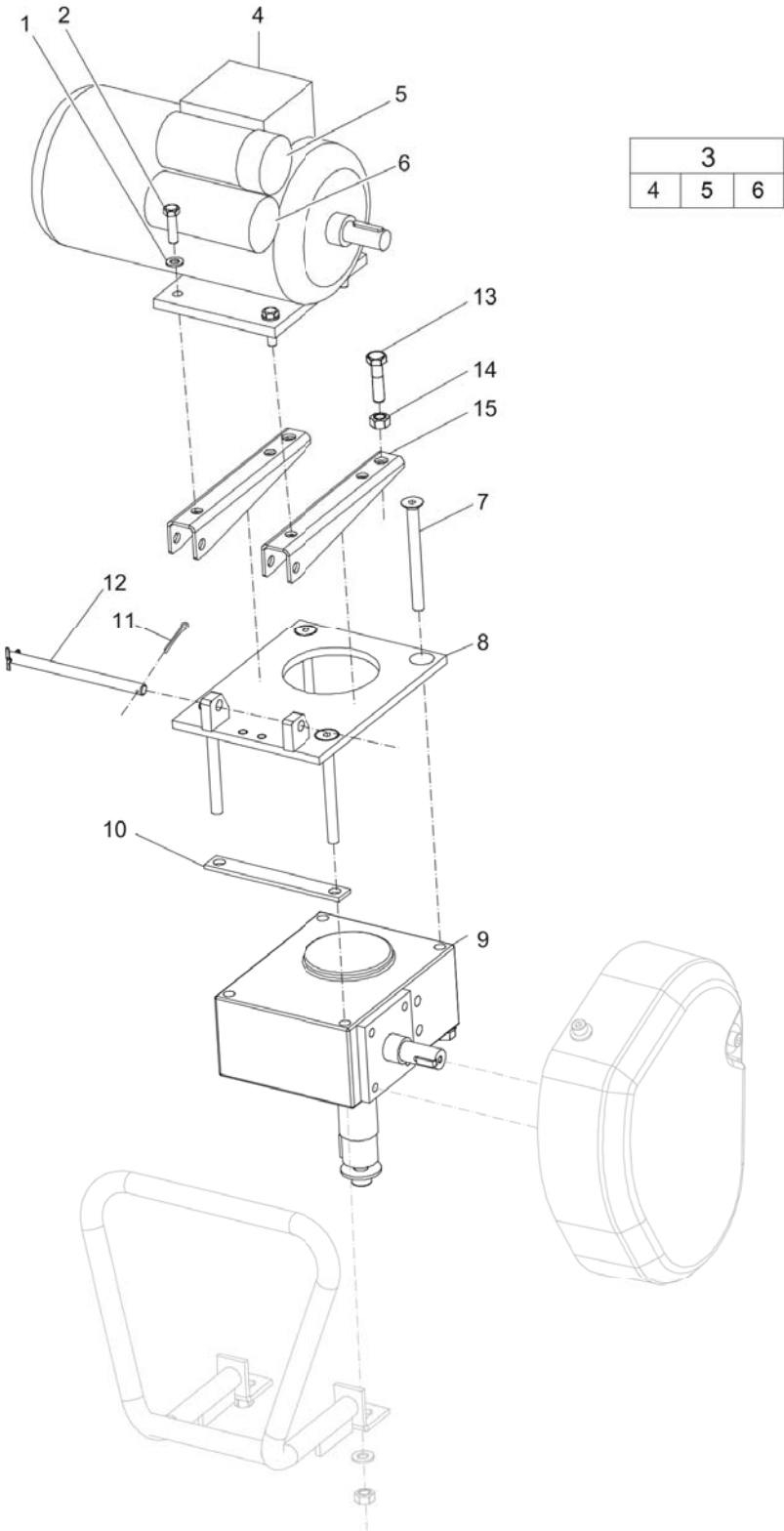
Item	Part Number	Name	Qty	L
1	3382010832	Handle bracket	1	
2	3382010763	Handle upper part	1	
3	0226991525	Square neck bolt	1	
4	4700049051	Locking lever	1	
5	4700002816	Tube plug	1	
6	4700049052	Spacer sleeve	2	
7	-	Washer, 12 x 6mm, 0.47 x 0.24 in.	1	
8	-	Screw, M10 x 16 mm	2	
9	4700001213	Rubber handle	2	
10	4700047860	Shaft	1	
11	4700033101	Control box	1	
12	3382010943	Security bracket	1	
13	4700033063	Fork	1	
14	0111168606	Locking clip	1	
15	4700048986	Bow	1	
16	-	Screw, M8 x 16 mm	2	
17	0111125202	Split pin, Ø3.2 x 28 mm, Ø0.13 x 1.10 in.	2	
18	-	Washer, 10 x 2 mm, 0.40 x 0.08 in.	4	
19	4700049000	Adjusting wire	1	
20	4700001019	Wire	1	
21	-	Lock nut, M8	2	
22	3382011180	Clevis pin	1	
23	4700002817	Locking washer	2	
24	0346100049	Pipe clamp	2	
25	4700002627	Edge protection	1	
26	-	Screw, M4 x 10 mm	2	
27	4700047950	Isolating washer	1	
28	4700046431	Wire holder	1	
29	0226313903	Tapping screw	3	
30	-	Screw, M4 x 8 mm	4	
31	4700003314	Magnet	1	
32	-	Lock nut, M4	2	

Refer to Parts Online for the most up to date information. The printed information might be outdated.

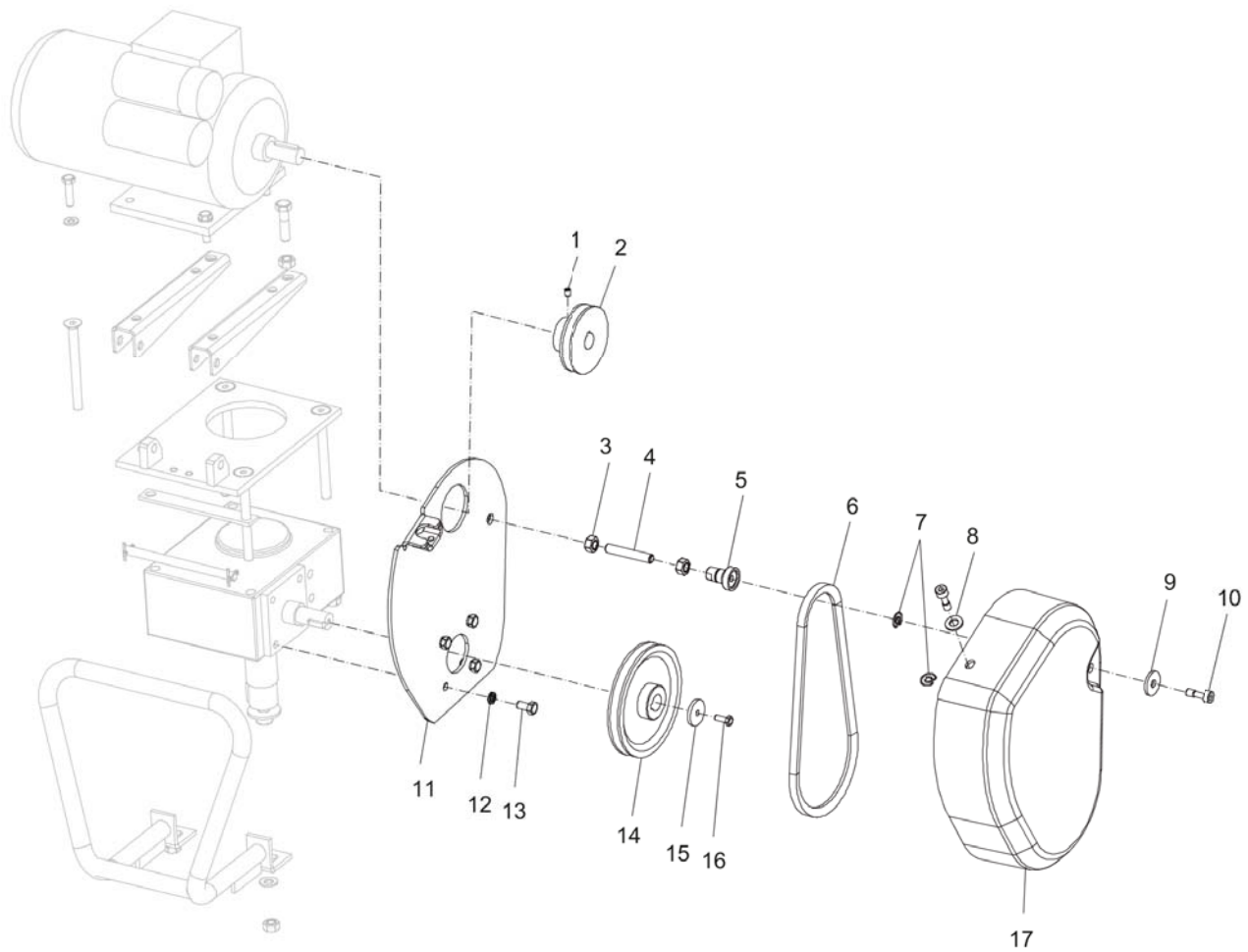
Mon Mar 10 10:53:50 UTC 2014

Item	Part Number	Name	Qty	L
33	-	Washer, 5.3 x 10 x 1 mm, 0.21 x 0.40 x 0.04 in.	4	
34	-	Screw, M5 x 40 mm	2	
35	-	Lock nut, M5	2	
36	3382100061	Blade adjuster, complete	1	
.37	--	Guiding	1	
.38	--	Screw, M5 x 8 mm	2	
.39	--	Wire lock	1	
.40	--	Spring pin, 5 x 30 mm, 0.20 x 1.18 in.	1	
.41	--	Bearing support	1	
.42	--	Adjusting nut	1	
.43	--	Adjusting screw	1	
.44	--	Flange bearing	1	
.45	--	Washer, 10 x 2 mm, 0.40 x 0.08 in.	1	
.46	--	Knob	1	
47	-	Nut	2	
48	4700000168	Bracket	2	
49	3382011239	Spring	1	

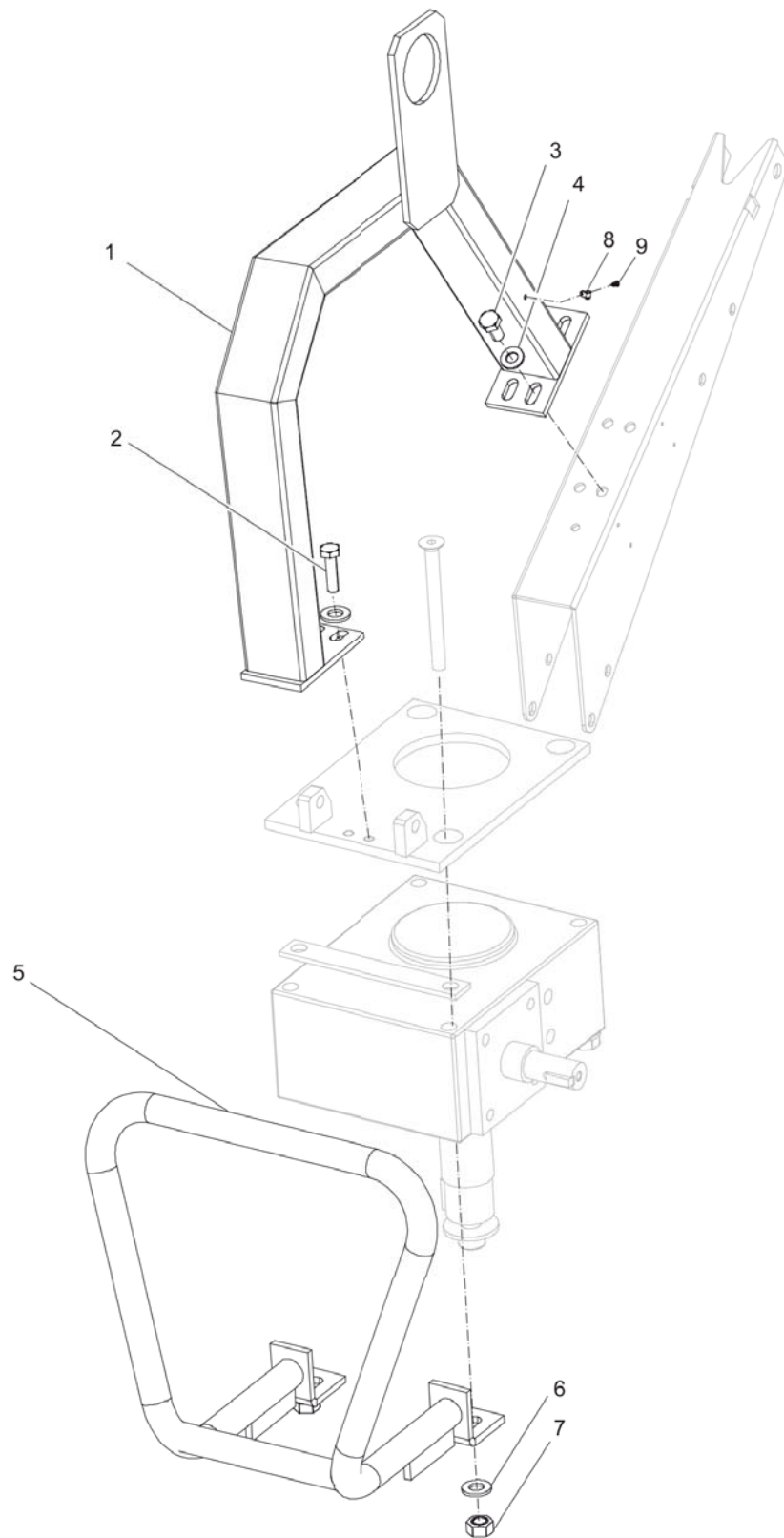
Spare parts list Electric motor installation



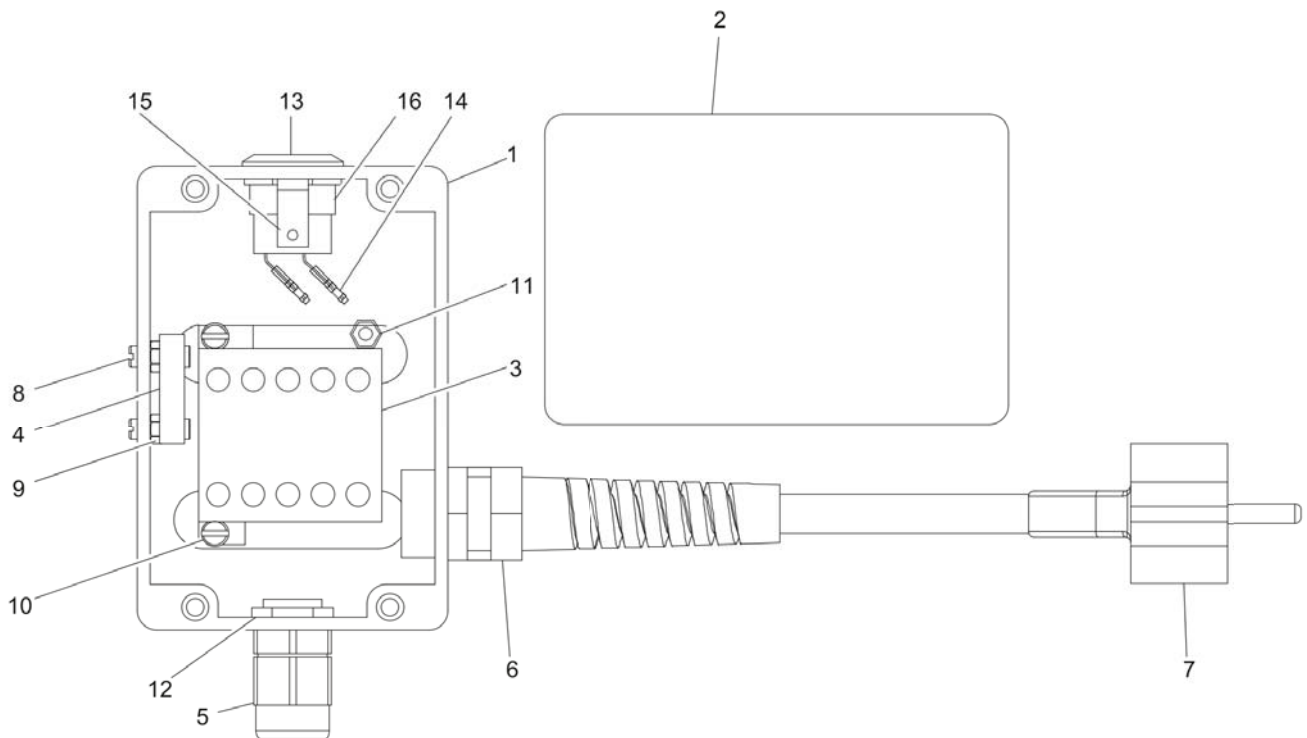
Item	Part Number	Name	Qty	L
1	-	Washer, 8.4 x 16 x 1.6 mm, 0.33 x 0.63 x 0.06 in.	4	
2	-	Screw, M8 x 30 mm	4	
3	4700003711	Electric motor, complete	1	
.4	--	Electric motor	1	
.5	3382100186	Capacitor, 60µF/450V	1	
.6	3382100185	Capacitor, 40µF/450V	1	
7	-	Screw, 10 x 110 mm, 0.40 x 4.33 in.	4	
8	3382010609	Engine attachment	1	
9	4700002858	Gear box	1	
10	3382010557	Spacer plate	1	
11	0111127903	Split pin, 3.2 x 28 mm, 0.13 x 1.10 in.	2	
12	3382010652	Clevis pin	1	
13	-	Screw, M10 x 40 mm	2	
14	-	Nut, M10	2	
15	3382010608	Bracket	2	

Spare parts list Power transmission

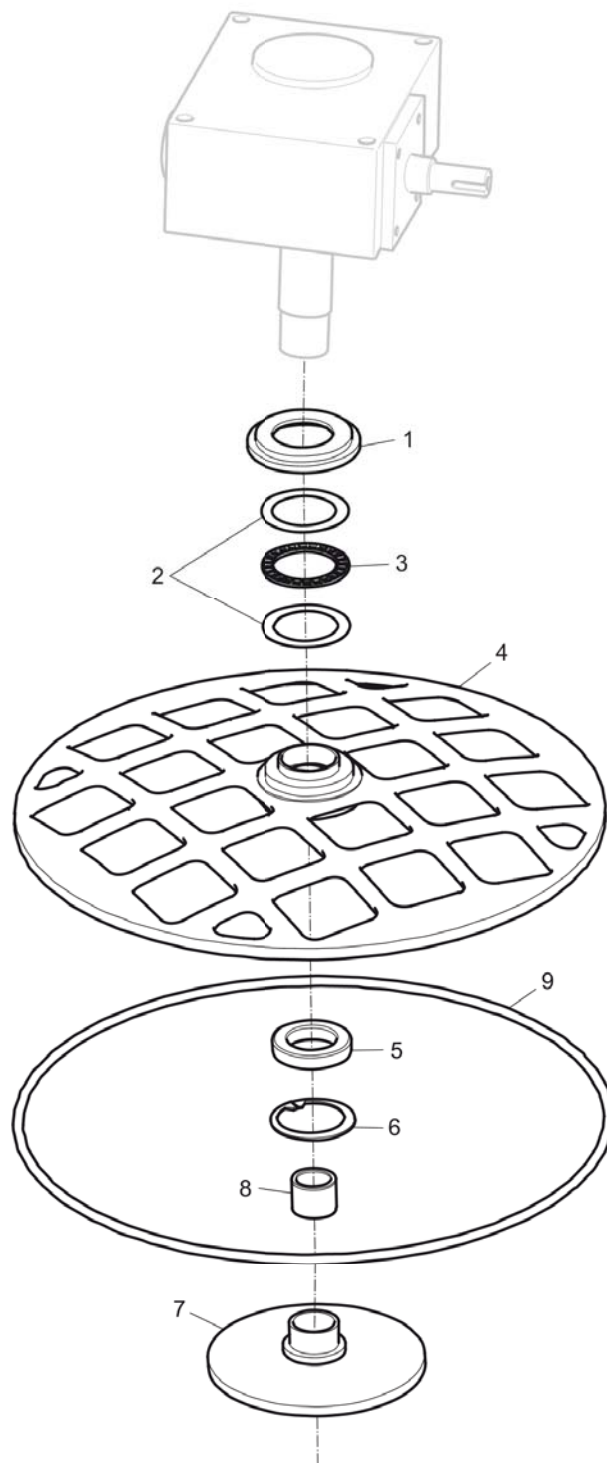
Item	Part Number	Name	Qty	L
1	0196124200	Set screw, M6 x 8 mm	1	
2	4700049030	Pulley	1	
3	-	Nut, M10	2	
4	0248998043	Threaded rod, M10 x 60 mm	1	
5	4812060274	Holder	1	
6	4700002826	V-belt, Lp = 670 mm	1	
7	3382010972	Lock spring	2	
8	0808080808	Washer, 10.5 x 20 x 2 mm, 0.41 x 0.79 x 0.08 in.	1	
9	-	Washer, 9 x 28 x 3 mm, 0.35 x 1.10 x 0.12 in.	1	
10	4812060278	Captive screw	2	
11	3382010831	Holder	1	
12	-	Spring washer, 8.1 x 2 mm, 0.32 x 0.08 in.	4	
13	-	Hexagon head screw, M8 x 16 mm	4	
14	4700033097	Pulley	1	
15	-	Washer, 6.5 x 30 x 4 mm, 0.26 x 1.18 x 0.16 in.	1	
16	-	Hexagon head screw, M6 x 16 mm	1	
17	3382010611	Belt cover	1	

Spare parts list Support and lifting device

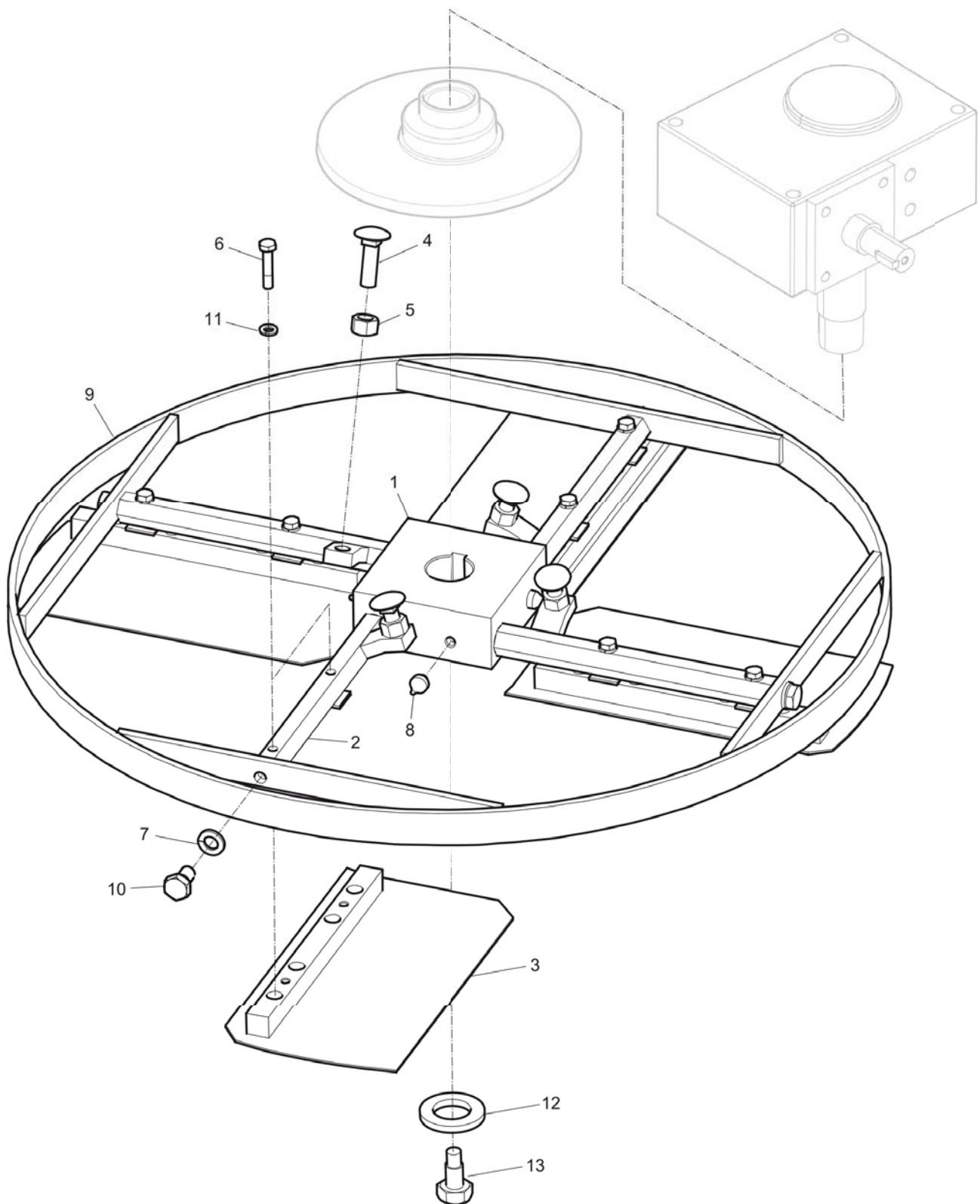
Item	Part Number	Name	Qty	L
1	3382010610	Lifting eye	1	
2	-	Screw, M8 x 30 mm	2	
3	-	Screw, M8 x 16 mm	4	
4	-	Washer, 8.4 x 16 x 1.6 mm, 0.33 x 0.63 x 0.06 in.	6	
5	3382010462	Support arch	1	
6	-	Washer, 10.5 x 20 x 2 mm, 0.41 x 0.79 x 0.08 in.	2	
7	-	Nut, M10	2	
8	0346100049	Pipe clamp	1	
9	0226313903	Tapping screw	1	

Spare parts list Electric equipment

Item	Part Number	Name	Qty	L
1	4700033100	Connection box	1	
2	3382011149	Lid	1	
3	4700003731	Connector	1	
4	4700003313	Magnet transmitter	1	
5	4700003899	Gland	1	
6	4700003216	Gland with bending protection	1	
7	4700003627	Hose with plug	1	
8	-	Slotted screw, M3 x 12 mm	2	
9	-	Lock nut, M3	2	
10	-	Slotted screw, M4 x 16 mm	2	
11	-	Hexagon nut, M4	4	
12	4700003897	Check nut	1	
13	4700003738	Button	1	
14	4700003644	Flat pin socket	2	
15	4700049170	Ground washer	1	
16	3382011148	Check nut	1	

Spare parts list Protective ring

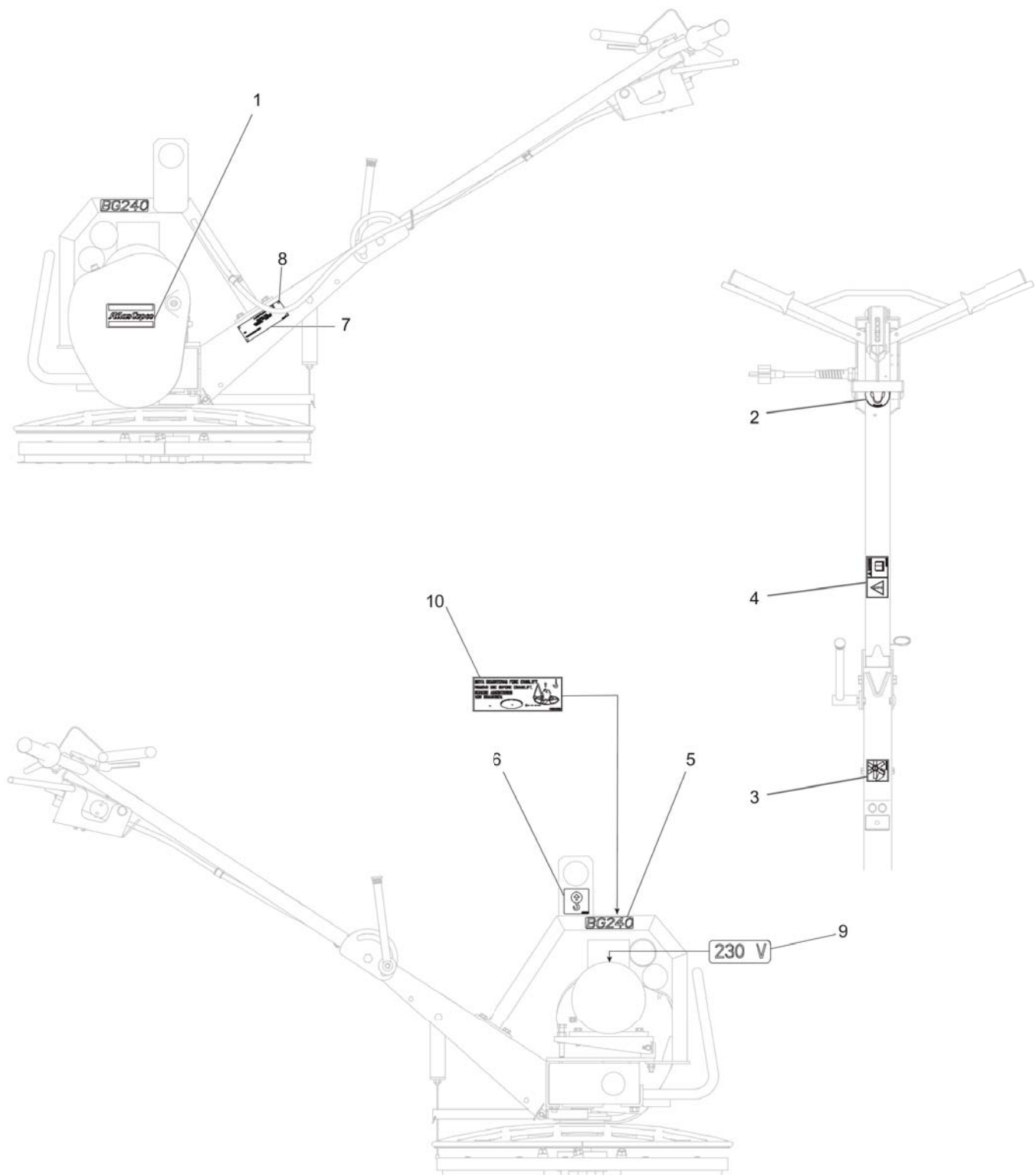
Item	Part Number	Name	Qty	L
1	4700048926	Pressing sleeve, 116 x 15 mm, 4.57 x 0.60 in.	1	
2	4700000166	Thrust washer, AS 6590	2	
3	4700000165	Thrust bearing, AXK 6590	1	
4	3382010460	Protective ring	1	
5	4700000115	Ball bearing, 6010 - 2RS1	1	
6	0335216000	Retaining ring, 80 x 2.5 mm, 3.15 x 0.10 in.	1	
7	4700033090	Pressure plate	1	
8	4700002225	Sleeve bearing	1	
9	4700049057	PVC ring, ø10 mm, ø0.40 in.	1	

Spare parts list Blade assembly

Refer to Parts Online for the most up to date information. The printed information might be outdated.

Mon Mar 10 10:54:24 UTC 2014

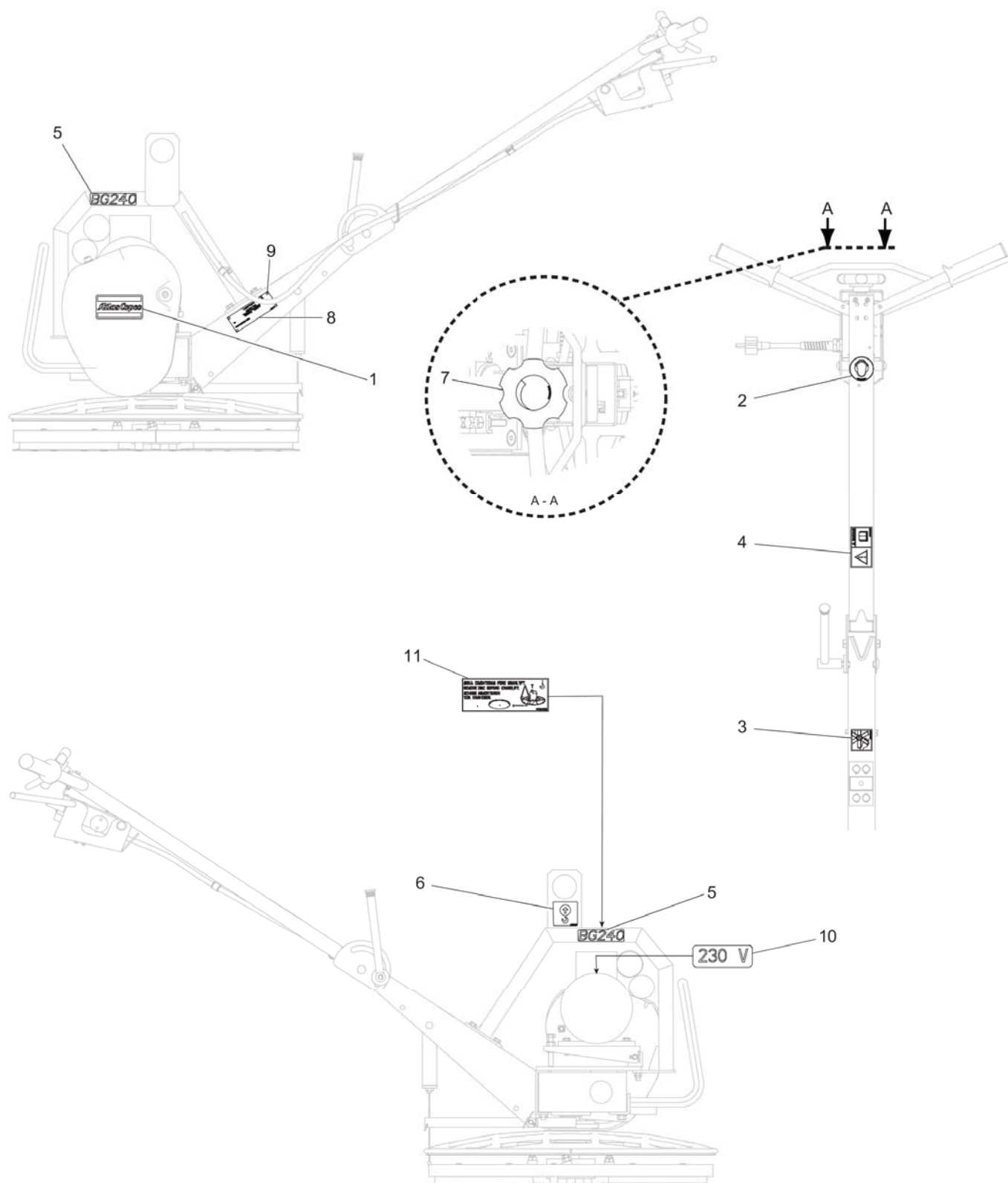
Item	Part Number	Name	Qty	L
1	4700033026	Hub	1	
2	4700033027	Blade axle	4	
3	4700048968	Trowel blades, set of four (bolt on)	1	
4	-	Square neck bolt, 10 x 35 mm, 0.40 x 1.38 in.	4	
5	-	Nut, M10	4	
6	-	Screw, M6 x 30 mm 8.8	8	
7	-	Washer, 10 x 16 mm, 0.40 x 0.63 in.	4	
8	0544110009	Grease nipple	4	
9	4700033030	Blade ring	1	
10	-	Screw, M10 x 16 mm	4	
11	-	Washer, 6 x 1.6 mm, 0.24 x 0.06 in.	8	
12	-	Washer, 13 x 3 mm, 0.51 x 0.12 in.	1	
13	-	Screw, M12 x 30 mm	1	

Spare parts list Labels, quick pitch

Refer to Parts Online for the most up to date information. The printed information might be outdated.

Mon Mar 10 10:54:31 UTC 2014

Item	Part Number	Name	Qty	L
1	0690110131	Product label, "Atlas Copco"	1	
2	3382010900	Label, ear protection	1	
3	3382010902	Label, cutting hazards	1	
4	3382010899	Safety label	1	
5	3382011198	Product label, BG240	2	
6	3382010901	Label, lift point	1	
7	-	Data plate	1	
8	-	Drive screw	4	
9	4700043985	Voltage label, 230V	1	
10	4700046239	Label, remove disc	1	

Spare parts list Labels, twist pitch

Refer to Parts Online for the most up to date information. The printed information might be outdated.

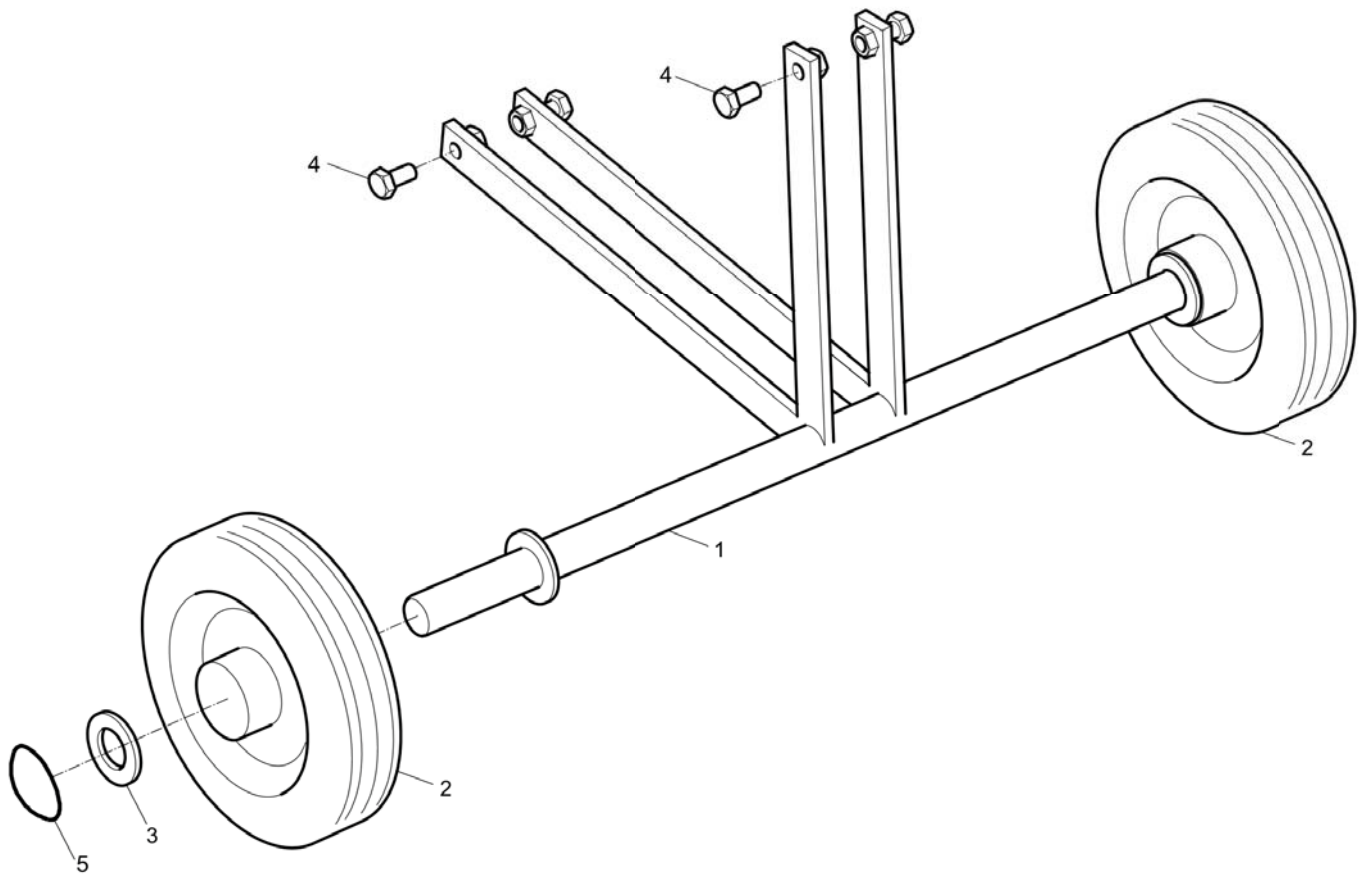
Mon Mar 10 10:54:36 UTC 2014

Item	Part Number	Name	Qty	L
1	0690110131	Product label, "Atlas Copco"	1	
2	3382010900	Label, ear protection	1	
3	3382010902	Label, cutting hazards	1	
4	3382010899	Safety label	1	
5	3382011198	Product label, BG240	2	
6	3382010901	Label, lift point	1	
7	4700045902	Label, blade angle	1	
8	-	Data plate	1	
9	-	Drive screw	4	
10	4700043985	Voltage label, 230V	1	
11	4700046239	Label, remove disc	1	

Accessories Consumables

No Illustration Available

Item	Part Number	Name	Qty	L
-	4700033081	Floating disc	1	
-	4700048968	Trowel blades, set of four (bolt on)	1	

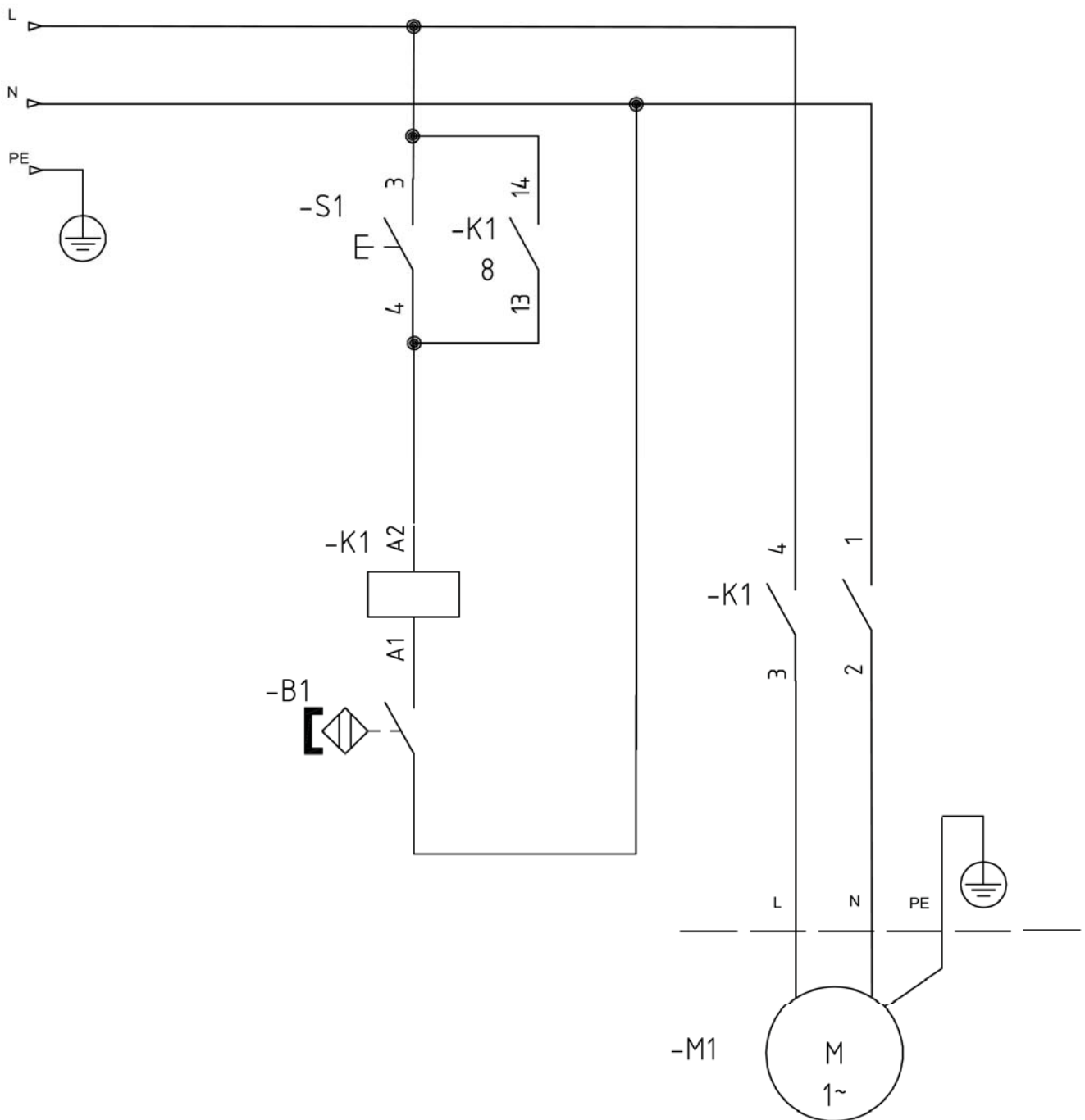
Accessories Transport device

Item	Part Number	Name	Qty	L
1	4700033139	Wheel frame	1	
2	4700001755	Wheel	2	
3	-	Washer, 21 x 37 x 3 mm, 0.83 x 1.46 x 0.12 in.	2	
4	-	Screw, M8 x 16 mm 8.8	4	
5	3382011202	Locking washer	2	

Kits Maintenance kit (yearly recommend)

No Illustration Available

Item	Part Number	Name	Qty	L
1	3382100018	Maintenance kit	1	
.-	4700002826	V-belt, Lp = 670 mm	1	
.-	4700003313	Magnet transmitter	1	
.-	4700049000	Adjusting wire	1	

Wiring diagram Wiring diagram

Any unauthorized use or copying of the contents or any part thereof is prohibited.
This applies in particular to trademarks, model denominations, part numbers, and
drawings.

© 2014 Atlas Copco Construction Tools AB | No. 9800 1320 01d | 2014-03-03

