

CRAFTSMAN®

Product questions or problems?

1-888-331-4569

Customer Care Hot Line

Get answers to questions, troubleshoot problems,
order parts, or schedule repair service.

Para respuestas a preguntas o problemas, y ordenar
piezas o pedir servicio para la reparación de su equipo.

To help us help you, register your product at www.craftsman.com/registration

Para poderte ayudar mejor, registra tu producto en www.craftsman.com/registration

Join the Craftsman Club today!

CRAFTSMAN® CLUB

www.craftsman.com/signup

Receive exclusive member benefits including special pricing and offers,
project sharing, expert advice, and SHOP YOUR WAY REWARDS!

Como miembro exclusivo, recibe diversos beneficios como ofertas, precios especiales, proyectos
nuevos, consejos de expertos y nuestro programa de puntos SHOP YOUR WAY REWARDS!

® Registered Trademark / ™ Trademark of KCD IP, LLC in the United States, or Sears Brands, LLC in other countries
® Marca Registrada / ™ Marca de Fábrica de KCD IP, LLC en Estados Unidos, o Sears Brands, LLC in otros países

Repair Parts Manual

CRAFTSMAN®

LAWN TRACTOR

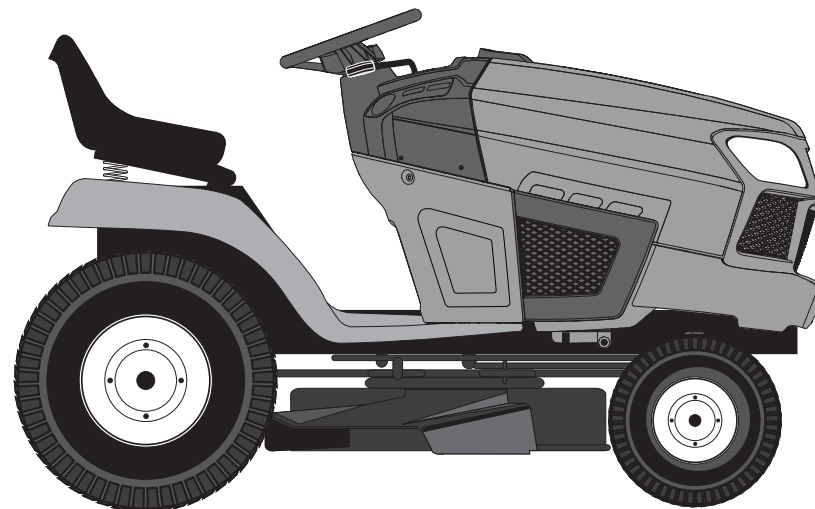
19.0 HP,* 42" Mower

Electric Start

Automatic Transmission

Model No.

917.255810



For answers to your questions
about this product, call:

1-888-331-4569

Craftsman Customer Help Line

Sears Brands Management Corporation, Hoffman Estates, IL 60179 U.S.A.
Visit our Craftsman website: www.craftsman.com

* The power rating as declared by the engine manufacturer is the average gross power output at the specified RPM of a typical production engine for the engine model measured using SAE Standards for engine gross power. Please refer to the engine manufacturer for details.

TRACTOR - - MODEL NUMBER 917.255810

BRIGGS & STRATTON ENGINE-MODEL NUMBER 33R877, TYPE NUMBER 0002-G1

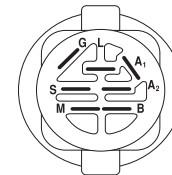
SCHEMATIC

TRACTOR - - MODEL NUMBER 917.255810

KEY NO.	PART NO.	DESCRIPTION	KEY NO.	PART NO.	DESCRIPTION
1	591465	Cylinder Assembly	135	698780	Tube-Fuel Transfer
3	3910865	Seal-Oil (Magneto Side)	137	698781	Gasket-Float Bowl
4	592849	Sump-Engine	141	792777	Kit-Choke Shaft
5	591750	Head-Cylinder	187	791805	Line-Fuel (Formed)
7	794114	Gasket-Cylinder Head	187A	791766	Line-Fuel (Cut to Required Length)
9	697109	Gasket-Breather			
11	794683	Tube-Breather	188	691693	Screw (Control Bracket)
12	697110	Gasket-Crankcase	192	691986	Adjuster-Rocker Arm
13	592244	Screw (Cylinder Head)	202	691841	Link-Mechanical Governor
15	690946	Plug-Oil Drain	209	796260	Spring-Governor (Green)
16	591763	Crankshaft	216	691840	Link-Choke
20	795387	Seal-Oil (PTO Side)	217	695409	Spring-Choke Return
22	692125	Screw (Crankcase Cover/Sump)	222	694042	Bracket-Control
23	591759	Flywheel	227	691374	Lever-Governor Control
24	591757	Key-Flywheel (Steel)	232	691842	Spring-Governor Link
25	95858	Piston Assembly (Standard)	238	691843	Cap-Valve
	795877	Piston Assembly (020" Oversize)	240	691035	Filter-Fuel
26	794126	Ring Set (Standard)	265	691024	Clamp-Casing
	794127	Ring Set (.020" Oversize)	267	794904	Screw (Casing Clamp)
27	698469	Lock-Piston Pin	276	695410	Washer-Sealing
28	795861	Pin-Piston	304	592814	Housing-Blower
29	794571	Rod-Connecting	305	697102	Screw (Blower Housing) (1/4-20x1.21)
32	791118	Screw (Connecting Rod)			
33	591752	Valve-Exhaust	305A	793376	Screw (Blower Housing) (1/4-20x.68)
34	591751	Valve-Intake			
35	691279	Spring-Valve (Intake)	305B	795891	Screw (Blower Housing to Intake Elbow) (#10-16x.43)
36	691279	Spring-Valve (Exhaust)			
37	699882	Guard-Flywheel	305C	799370	Screw (Blower Housing) (1/4-20x.90)
42	499586	Keeper-Valve			
43	691968	Slinger-Governor/Oil	306	794953	Shield-Cylinder
45	690564	Tappet-Valve	307	691693	Screw (Cylinder Shield)
46	793880	Camshaft	309	693551	Motor-Starter
48	N/A	Short Block (Not Available at this Printing)	310	690323	Screw (Starter Motor)
			311	497608	Brush Set
50	592842	Manifold-Intake	324	796309	Screen/Cup Assembly
51	692137	Gasket-Intake	333	799650	Armature-Magneto
51A	796081	Gasket-Intake	334	691061	Screw (Magneto Armature)
53	591260	Stud (Carburetor)	337	4910555	Plug-Spark
54	691148	Screw (Intake Manifold)	358	796187	Gasket Set-Engine
78	691693	Screw (Flywheel Guard)	377	691639	Key-Woodruff
94	793610	Kit-Idle Mixture	404	691691	Washer (Governor Crank)
95	690718	Screw (Throttle Valve)	415	794129	Plug (Cover/Retainer)
98	695408	Kit-Idle Speed	415A	794903	Plug (Intake Manifold)
104	694918	Pin-Float Hinge	431	799043	Elbow-Intake
105	696136	Valve-Float Needle	445	793569	Filter-Air Cleaner Cartridge
108	695419	Valve-Choke	462	691261	Washer (Starter Cable)
117	796251	Jet-Main (Standard)	474	592831	Alternator
118	791406	Jet-Main (High Altitude)	503	691532	Strap-Starter
121	796184	Kit-Carburetor Overhaul	505	691251	Nut (Governor Control Lever)
125	591736	Carburetor	510	693699	Drive-Starter
127	690727	Plug-Welch	513	692024	Clutch-Drive
130	792747	Valve-Throttle	523	699908	Dipstick
131	792765	Kit-Throttle Shaft	524	691032	Seal-Dipstick Tube
133	694914	Float-Carburetor	525	697184	Tube-Dipstick

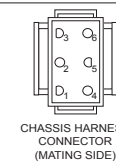
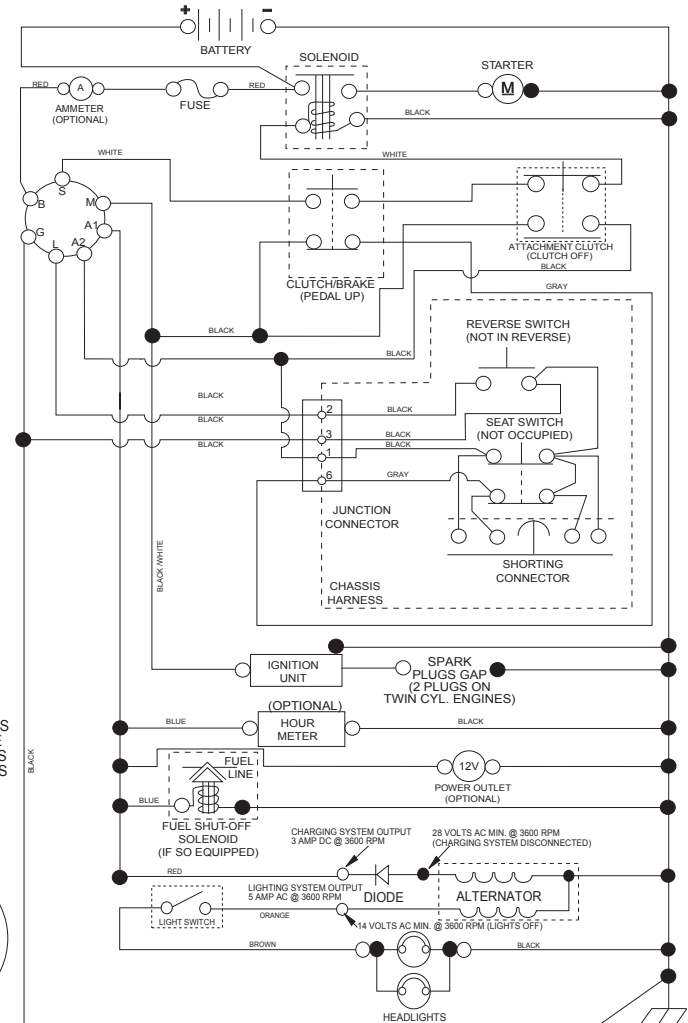
SCH11

NOTE
YOUR TRACTOR IS EQUIPPED WITH A SPECIAL ALTERNATOR SYSTEM. THE LIGHTS ARE NOT CONNECTED TO THE BATTERY, BUT HAVE THEIR OWN ELECTRICAL SOURCE. BECAUSE OF THIS, THE BRIGHTNESS OF THE LIGHTS WILL CHANGE WITH ENGINE SPEED. AT IDLE THE LIGHTS WILL DIM. AS THE ENGINE IS SPEEDED UP, THE LIGHTS WILL BECOME THEIR BRIGHTEST.



IGNITION SWITCH

POSITION	CIRCUIT	"MAKE"
OFF	M+G+A1	
RUN/OVERRIDE	B+A1	
RUN	B+A1	L+A2
START	B + S + A1	



CHASSIS HARNESS CONNECTOR (MATING SIDE)



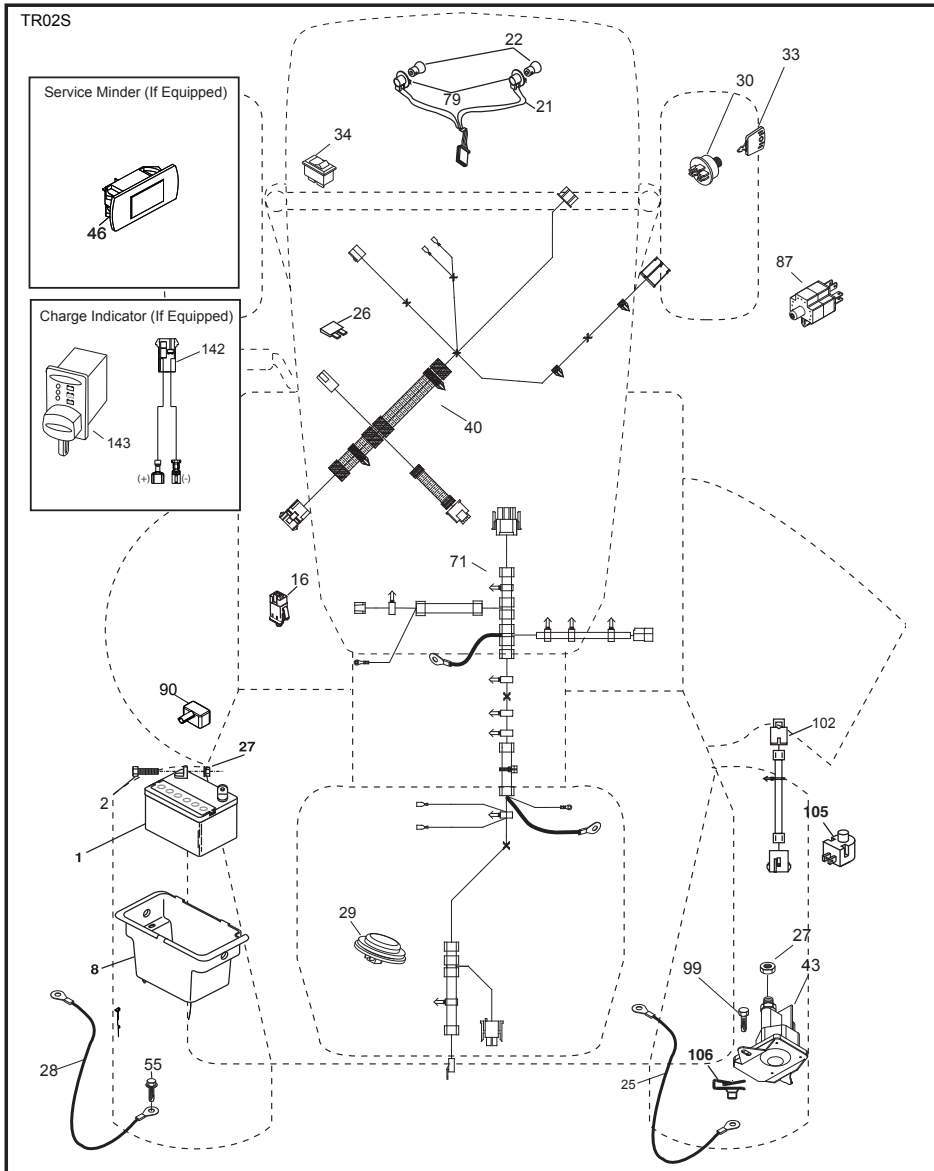
DASH HARNESS CONNECTOR (MATING SIDE)

WIRING INSULATED CLIPS NOTE: IF WIRING INSULATED CLIPS WERE REMOVED FOR SERVICING OF UNIT, THEY SHOULD BE RE-INSTALLED TO PROPERLY SECURE YOUR WIRING.



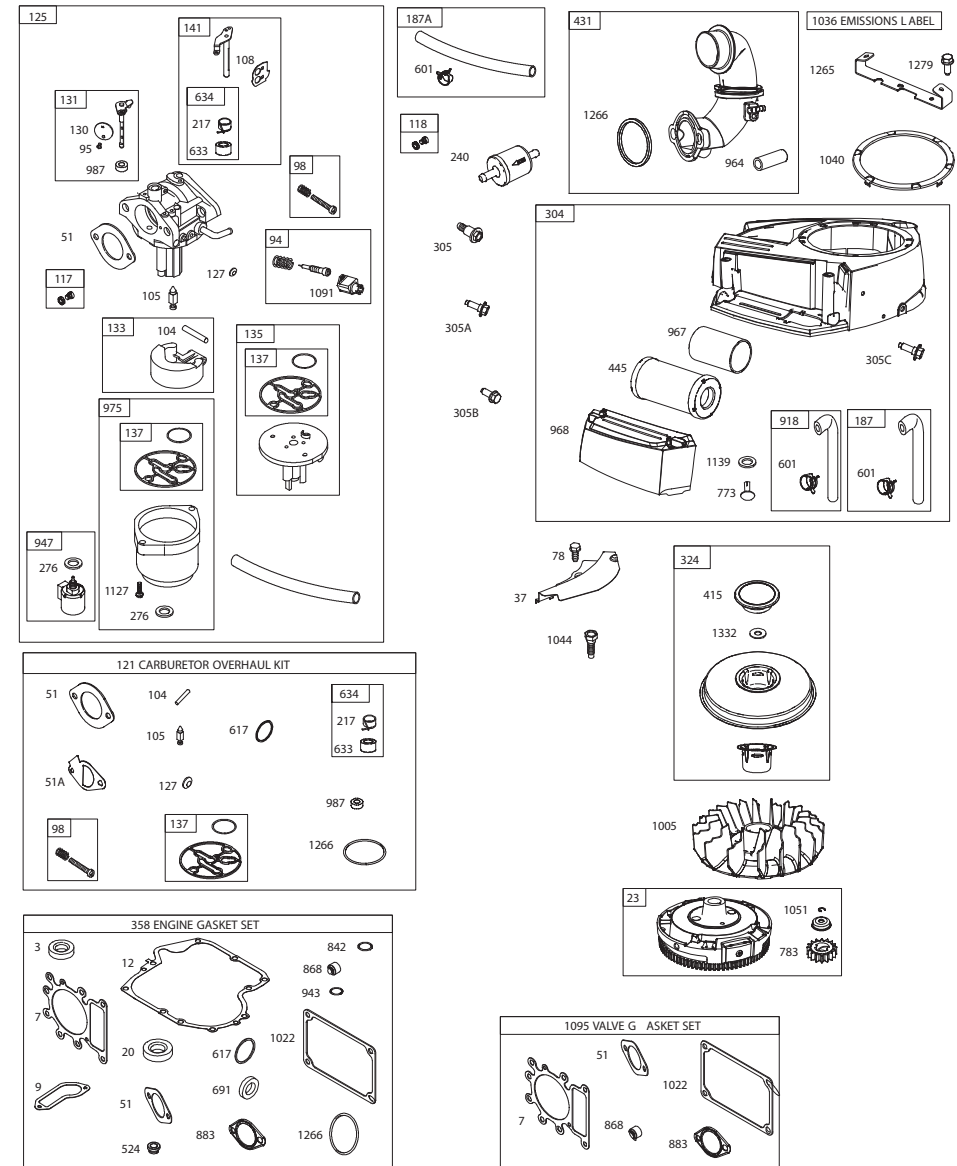
TRACTOR -- MODEL NUMBER 917.255810

ELECTRICAL



TRACTOR -- MODEL NUMBER 917.255810

BRIGGS & STRATTON ENGINE-MODEL NUMBER 33R877, TYPE NUMBER 0002-G1

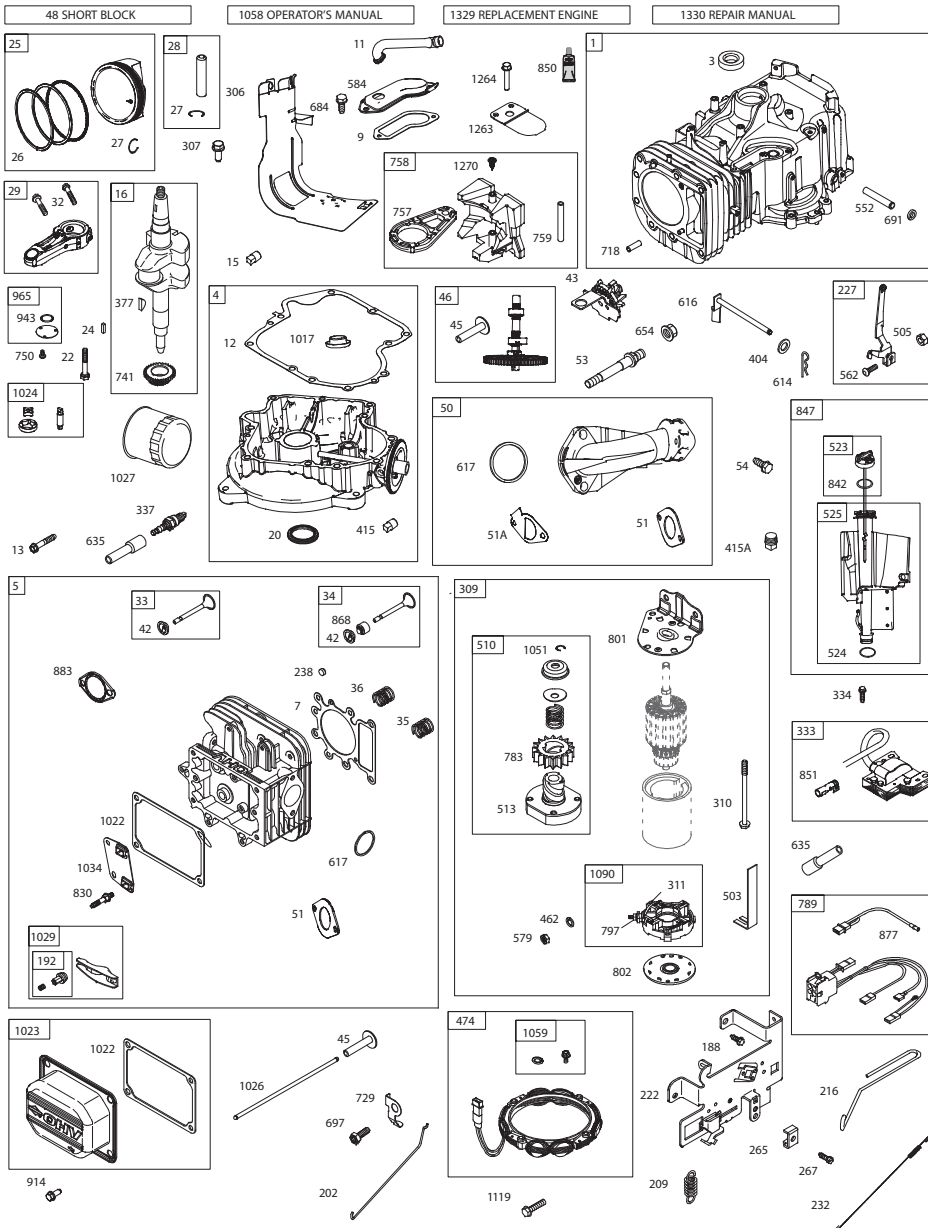


TRACTOR - - MODEL NUMBER 917.255810

BRIGGS & STRATTON ENGINE-MODEL NUMBER 33R877, TYPE NUMBER 0002-G1

ELECTRICAL

TRACTOR - - MODEL NUMBER 917.255810

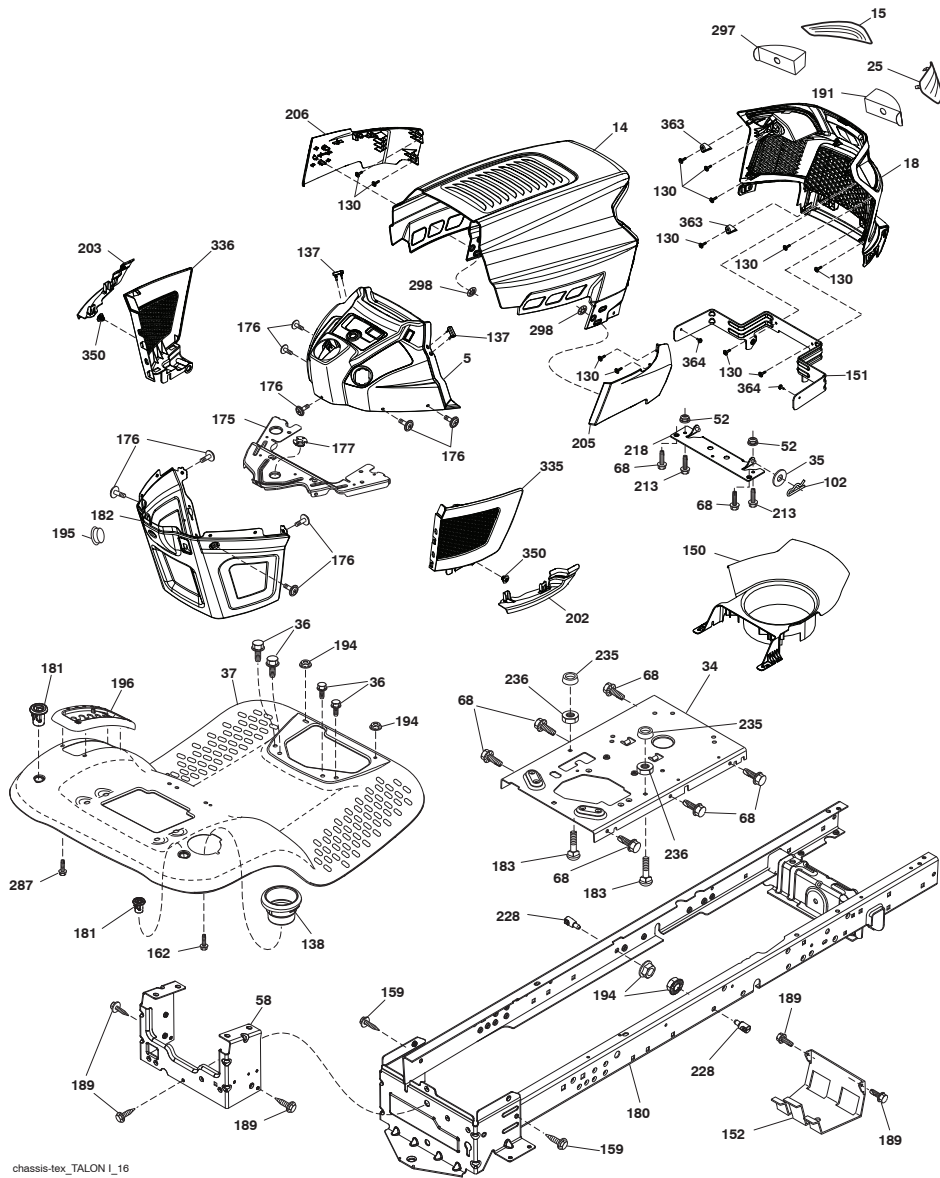


KEY PART NO. NO.

KEY PART NO. NO.	DESCRIPTION
1	163465 Battery
2	74760412 Bolt Hex Hd 1/4-20 unc x 3/4
8	193228 Box Battery
16	176138 Switch Interlock Push-In
21	400252 Harness Socket Light w/4152J
22	4152J Bulb Light
25	581498001 Cable Starter
26	175158 Fuse
27	73510400 Nut Keps Hex 1/4-20 unc
28	421686 Cable, Ground
29	401545 Switch, Seat
30	193350 Switch, Ign
33	411932 Key/Chain
34	110712X Switch Light / Reset
40	581023101 Harness Ign. Dash
43	582042801 Solenoid
55	17060512 Screw Thdrol 5/16-18 x 3/4 TYTT
71	501133701 Harness Ign. Chassis
79	175242 Bulbholder Asm. Incan Descent
87	197802 Switch Interlock Clutch Cable
90	435395 Cover Terminal Battery
99	17670412 Screw
102	581023401 Harness Pigtail
105	407568 Switch Reverse
106	174814 Palnut

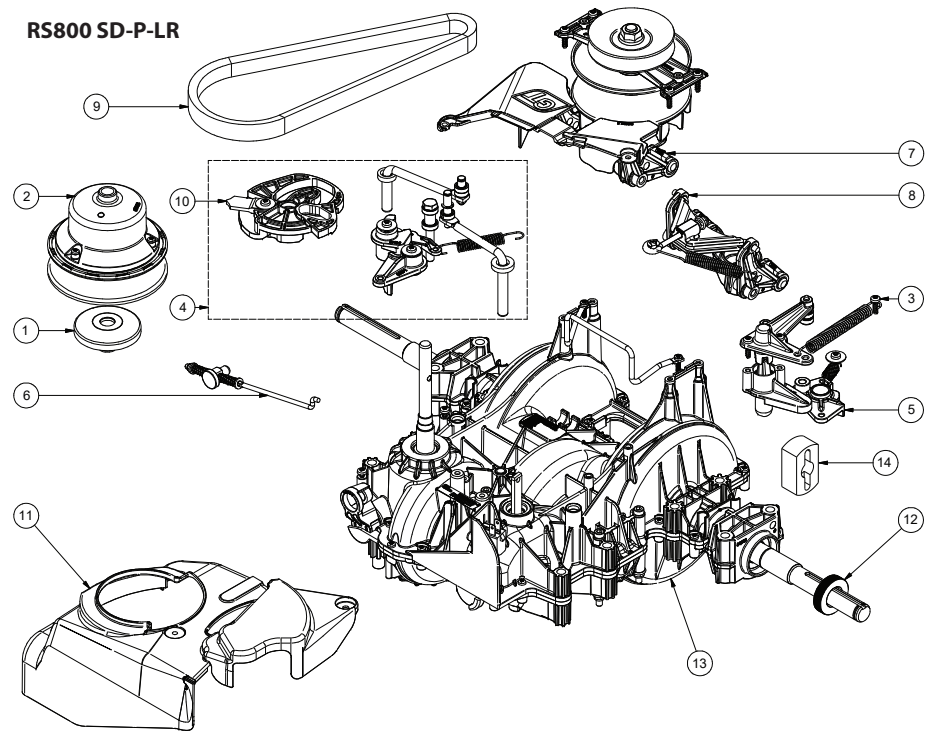
NOTE: All component dimensions given in U.S. inches
1 inch = 25.4 mm

TRACTOR -- MODEL NUMBER 917.255810
CHASSIS ASSEMBLY



chassis-tex_TALON L_16

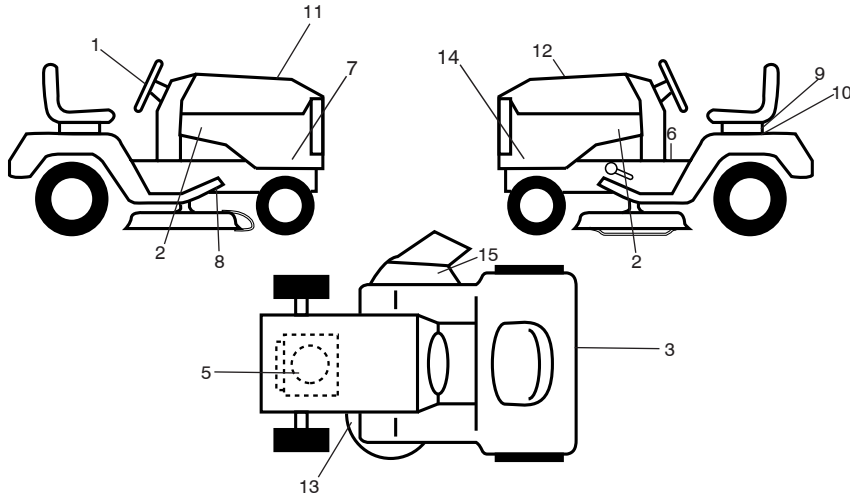
TRACTOR -- MODEL NUMBER 917.255810
GENTRANS TRANSAXLE - MODEL NUMBER (RS800 SD-P-LR) 587884601



KEY PART NO.	NO.	DESCRIPTION
1	587291101	Inversion Security System
2	587086701	Driven Kit
3	587291301	Brake Kit
4	587086702	Control Kit
5	587291401	Bypass Kit
6	587291402	Inversion Kit
7	589668301	Anti-Debris Kit
8	590097101	Variation Kit
9	587086101	Variation Belt
10	587086302	Rotating Cam

KEY PART NO.	NO.	DESCRIPTION
11	587291601	Cover
12	590100301	Output Seals
13	587884601	RS800-SD-P-LR
14	587086501	Driven Tool
--	587086901	RS800 Hardware Kit

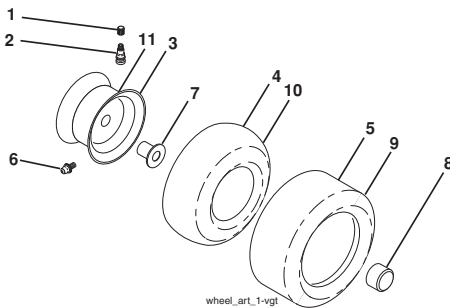
NOTE: All component dimensions given in U.S. inches
 1 inch = 25.4 mm



KEY PART NO.	NO.	DESCRIPTION
1	581894601	Decal, Steering
2	585767601	Decal, Hood
3	587390201	Decal, Fender
5	582522301	Decal, Engine HP
6	581578801	Decal, Fender Warning
7	502094401	Decal, Sideskirt RH
8	421534	Decal, V-Belt Schematic Drive
9	434996	Decal, Battery Warning
10	434995	Decal, Battery
11	588160301	Decal, Replacement
12	585571401	Decal, Customer Responsibility

KEY PART NO.	NO.	DESCRIPTION
13	581580001	Decal, Mower V-Belt SCH.
14	502094501	Decal, Sideskirt LH
15	584904601	Decal, Deck/Deflect Warning
--	193226X428	Pad, Footrest LH
--	400981X428	Pad, Footrest RH
--	581724801	Decal, Bypass
--	115793726	Manual Operator's (English/Spanish)
--	115793827	Manual Parts (English/Spanish)
--	588799624	Manual, Quick Start Guide (English/Spanish)

WHEELS & TIRES



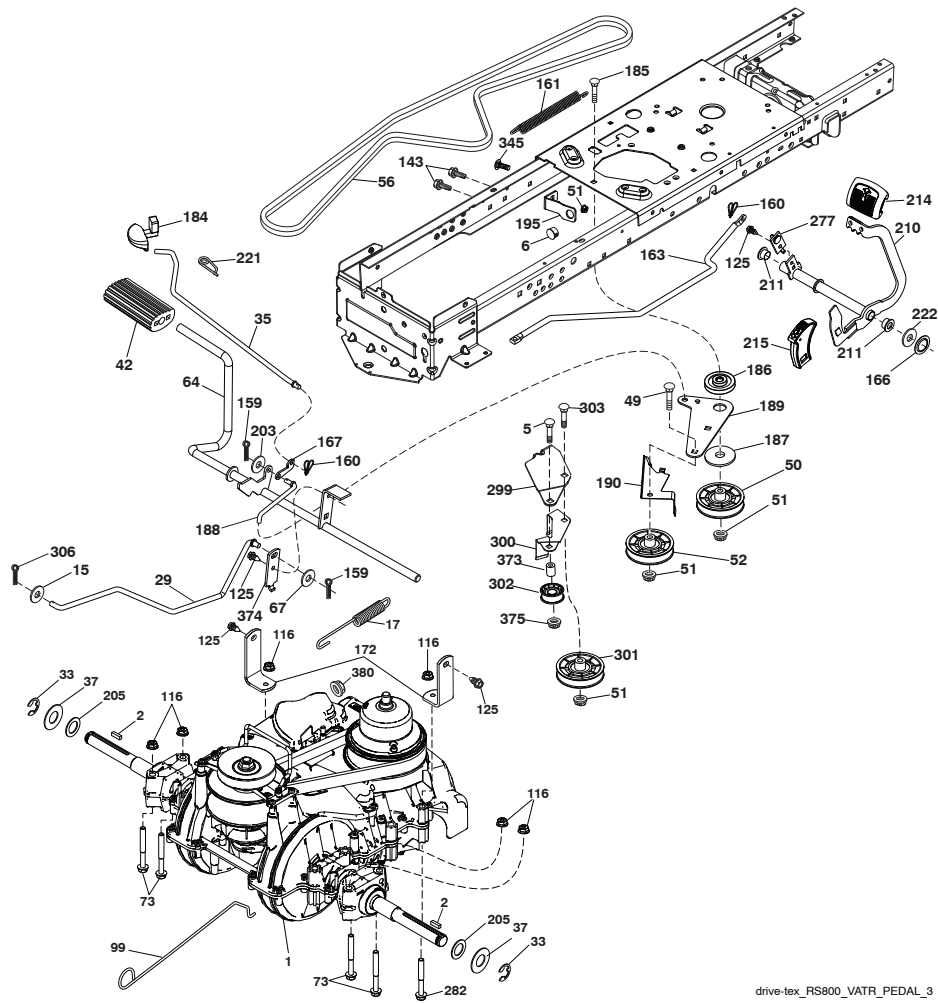
KEY PART NO.	NO.	DESCRIPTION
1	59192	Cap, Valve, Tire
2	65139	Stem, Valve
3	106732X613	Rim Assembly, Front
4	59904	Tube, Front
5	106222X	Tire, Front 15 x 6-6
6	278H	Fitting, Grease
7	9040H	Bearing, Flange
8	104757X428	Cap, Axle (Front Wheel Only)
9	138468	Tire, Rear 20 x 8-8
10	7152J	Tube, Rear
11	106108X613	Rim Assembly, Rear
--	144334	Sealant, Tire (10 oz. Tube)

NOTE: All component dimensions given in U.S. inches
1 inch = 25.4 mm

KEY PART NO.	NO.	DESCRIPTION
5	580485903	Dash
14	580354403	Hood
15	580485601	Lens LH
18	580485301	Grille
25	580484501	Lens RH
34	580910801	Plate engine
35	19111116	Washer 11/32 x 11/16 x 16 Ga.
36	17060512	Screw 5/16-18 x 3/4
37	414879X615	Fender
52	73680500	Nut Crown lock 5/16-18
58	412280	Drawbar upper
68	17490508	Screw Thdrol 5/16-18 x 1/2
102	4497H	Retainer Spring 1"
130	416358	Screw # 10 x .750 BOS Thread
137	407590	Bumper Dash
138	193224X428	Cupholder
150	580485503	Duct Heat Hood
151	580663302	Bracket Pivot
152	199535	Shield Browning/Debris
159	17000612	Screw Hexwsh Thdrol3/8-16x3/4
162	142432	Screw Hex Wsh Hi-Lo 1/4 x 1/2
175	196304	Crossmember
176	400776	Screw 10-24 x 5/8 Wshd Qdrx
177	195228	Bushing Steering
180	415063	Chassis
181	193102X428	Bushing Mtg. Fender Crgo.
182	586738602	Dash Lower
183	74520520	Bolt 5/16-18 x 1-1/4
189	17000512	Screw 5/16-18 x 3/4
191	580485101	Mylar Headlight RH
194	73900500	Nut Lock Hex Flange 5/16-18
195	401556X428	Plug Hole Dash 12V Adapter
196	414579	Console Asm. Deck Lift
202	580485001	C-Closeout Lwr Trm RH
203	580484801	C-Closeout Lwr Trm LH
205	580843706	Assembly Corner RH
206	580843806	Assembly Corner LH
213	74760512	Bolt hex HD 5/16-18 unc x 3/4
218	580897302	Pivot Hood Assy
228	195161	Stud Fastener
235	406129	Spacer Fender
236	73930500	Nut Center Lock 5/16-18
287	17600406	Screw Hex Washhead 1/4-20 x 3/8
297	580484901	Mylar Headlights LH
298	580851001	Nut Push
335	580484602	C-Side Closeout RH
336	580484402	C-Side Closeout LH
350	445143	Clip X-Mass Tree
363	580724501	Cap Talon Grille
364	17060408	Screw
--	404951X428	Plug Dash SRVMNDR

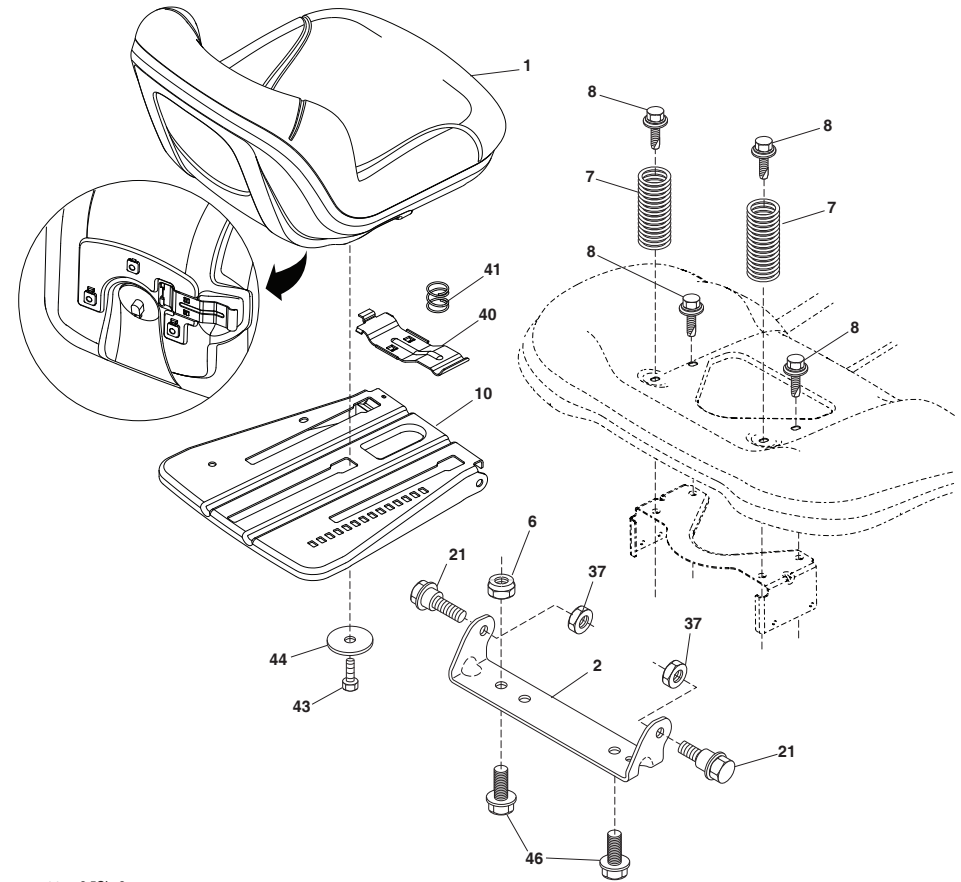
NOTE: All component dimensions given in U.S. inches
1 inch = 25.4 mm

TRACTOR -- MODEL NUMBER 917.255810
GROUND DRIVE



drive-tex_RS800_VATR_PEDAL_3

TRACTOR -- MODEL NUMBER 917.255810
SEAT ASSEMBLY



seat-tex_6.SSL_9

**KEY PART
 NO. NO.**

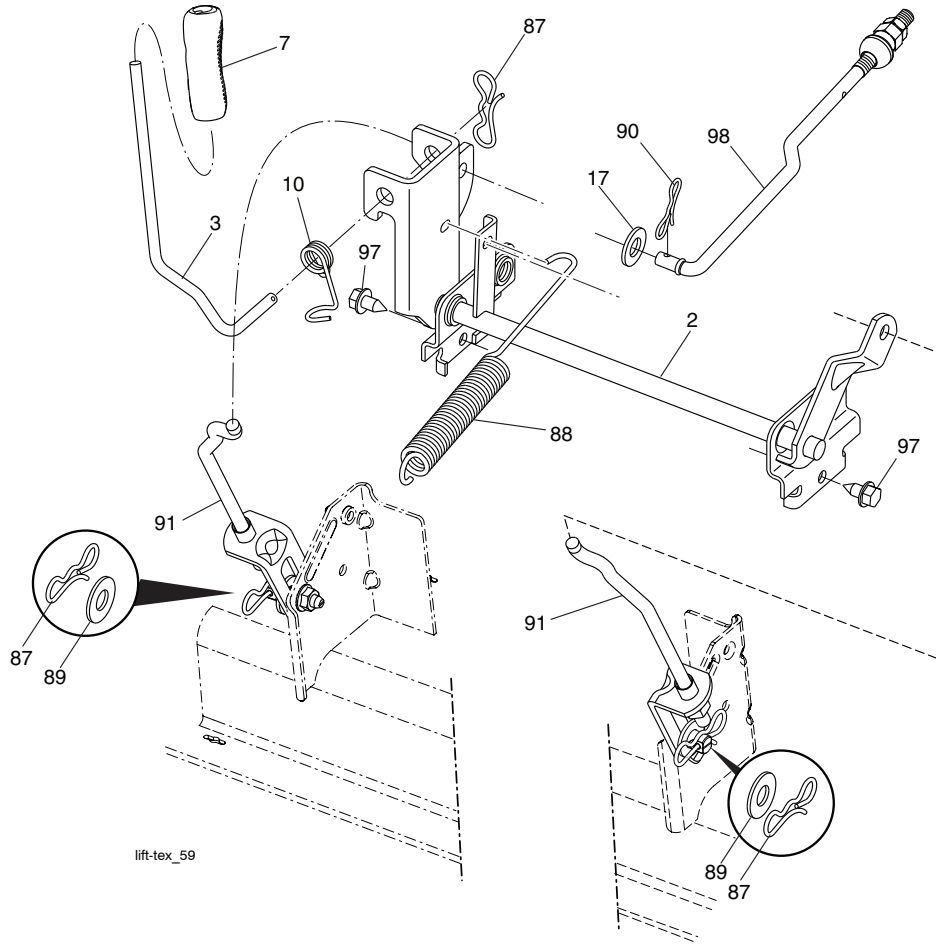
KEY PART NO.	NO.	DESCRIPTION
1	423644	Seat
2	180166	Bracket Pivot Fender
6	73800600	Nut, Lock W/Ins. 3/8-16 unc
7	589483501	Spring, Seat Cprsn
8	171877	Bolt 5/16-18 unc x 3/4 w/Sems
10	196977	Pan, Seat
21	587907801	Bolt, Shoulder 5/16-18 x 5/8
37	73800500	Nut, Lock 5/16-18 unc
40	197661	Handle Slide Seat

**KEY PART
 NO. NO.**

KEY PART NO.	NO.	DESCRIPTION
41	198200	Spring Latch Seat
43	74760612	Bolt 3/8-16 x 3/4
44	19133812	Washer 13/32 x 2-3/8 x 12 Ga.
46	588090401	Bolt 3/8-16 x 1 x 1.25 OD Wshr

NOTE: All component dimensions given in U.S. inches
 1 inch = 25.4 mm

TRACTOR - - MODEL NUMBER 917.255810
LIFT ASSEMBLY



KEY PART NO. NO.	DESCRIPTION
2 422027	Shaft Asm., Cross Lift
3 195231	Lever Asm., Lift RH
7 445060X428	Grip, Lever
10 196314	Spring Torsion
17 19131312	Washer 13/32 x 13/16 x 12 Ga.
87 194209	Pin Cotter 7/16 Bow Tie Lock
88 410710	Spring Lift Assist
89 19191912	Washer Clear Zinc

KEY PART NO. NO.	DESCRIPTION
90 194208	Pin Cotter 5/16 Bow Tie Lock
91 197984	Link Lift Susp Mower Rear
97 17000612	Screw 3/8-16 x .75
98 420525	Link Front Susp Asm.

NOTE: All component dimensions given in U.S. inches
 1 inch = 25.4 mm

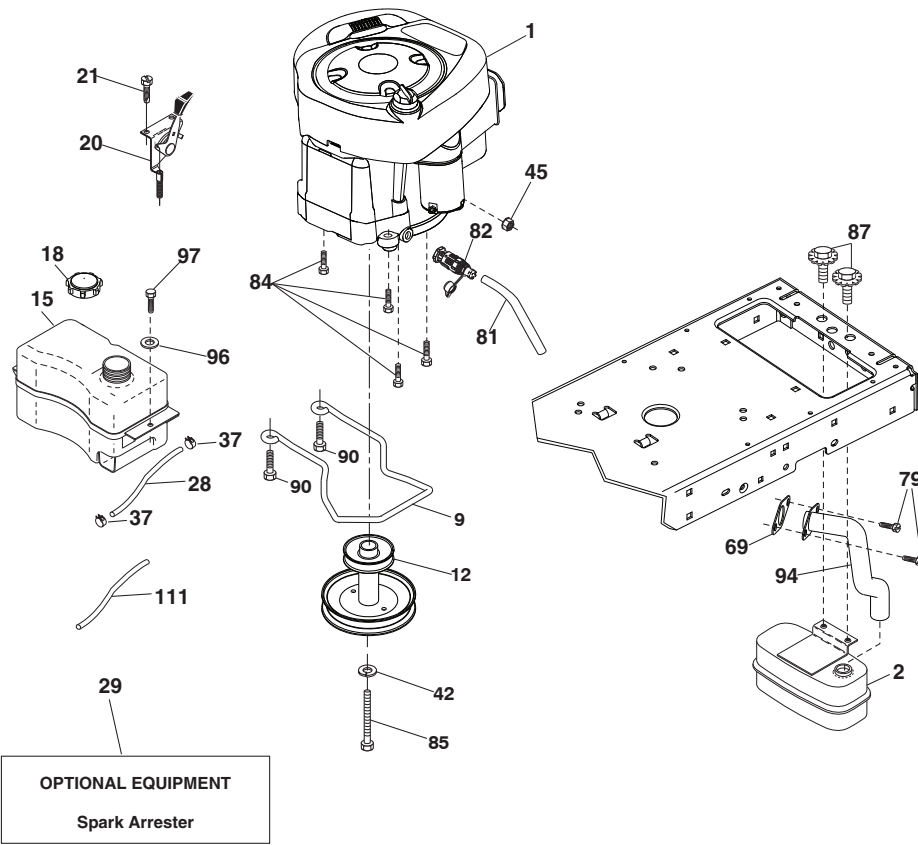
TRACTOR - - MODEL NUMBER 917.255810
GROUND DRIVE

KEY PART NO. NO.	DESCRIPTION	KEY PART NO. NO.	DESCRIPTION
1	Transmission, Variator, SD Pedal (590277601) (See transaxle breakdown.)	187 19133210	Washer 13/32 x 2 x 10 Ga.
2 123583X	Key Square	188 582217001	Link Clutch Ground Drive, Long
5 74760636	Bolt Hex HS 3/8-16 unc	189 194317	Bellcrank Grounddrive Nstg/Nstl
6 124028X	Bushing Snap	190 194318	Keeper Bellcrank Drive Ground
15 19131316	Washer 13/32 x 13/16 x 16 Ga.	195 581504601	Brake Bracket
17 501487101	Spring Brake	203 19111116	Washer 11/32 x 11/16 x 16 Ga.
29 584823101	Rod Brake	205 121748X	Washer 25/32 x 1-5/8 x 16 Ga.
33 12000001	E-Ring	210 588921001	Weldment Pedal
35 583864501	Rod Brake Parking	211 120183X	Bearing Nylon
37 188967	WasherHarden.793x1.637x060	214 421263	Pedal Forward Pad
42 8883R	Cover Pedal Blk Round	215 448254	Cap Pedal Reverse
49 72110614	Bolt Rdhd 3/8-16 unc x 1-3/4 Gr.5	221 403187	Retainer Spring Clip Handle
50 194327	Idler.Flat	222 79212010	Washer 21/32 x 1-1/4 10 Ga.
51 73900600	Nut Hex Flangelock 3/8-16	282 74490548	Screw Thdrol 5/16-18 x 3
52 194326	Idler V-Groove Offset	299 415683	Bracket Mount Idler
56 197253	Belt Drive	300 415681	Keeper Idler Rear
64 448353	Shaft Asm. Pedal Brake	301 415680	Pulley Idler V-Groove
67 582580101	Washer Nylon 13/32x 13/16x.109	302 581420501	Pulley Idler Flat 2.0 Od
73 74490544	Bolt Hex Flghd 5/16-18 Gr. 5	303 72110618	Bolt Rdhd Sgnk 3/8-16 x 2-1/4
99 435935	Rod Bypass	306 76020416	Cotter Pin
116 73900500	Nut Lock Hex Flange 5/16-18 unc	345 72110606	Bolt Rdhd Sgnk 3/8-16 x 1 Gr. 5
125 17000512	Screw 5/16-18 x 3/4 Smgml Tap/Bl	373 581461801	Spacer Idler
143 17490508	Screw Thdrol 5/16-18 x 1/2 Tytt	374 581475201	Bracket Brake Arm
159 76020412	Pin Cotter 1/8 x 3/4	375 73680600	Nut Crownlock 3/8-16 unc
160 169484	Retainer Clip(M) Dia. 290	380 582478601	Nut Flg Nylock 1/4-20 Gr G ZY
161 105709X	Spring Return Clutch 6.75		
163 587847901	Rod Control Pedal		
166 429164	Nut Push .625		
167 405257	Latch Brake Parking		
172 583974201	Strap Torque LH/RH		
184 196439X428	Handle Parking Brake		
185 72110622	Bolt Rdhd 3/8-16 unc x 2-3/4 Gr.5		
186 194321	Spacer Retainer		

NOTE: All component dimensions given in U.S. inches
 1 inch = 25.4 mm

TRACTOR - - MODEL NUMBER 917.255810

ENGINE



engine-tex_BS_132

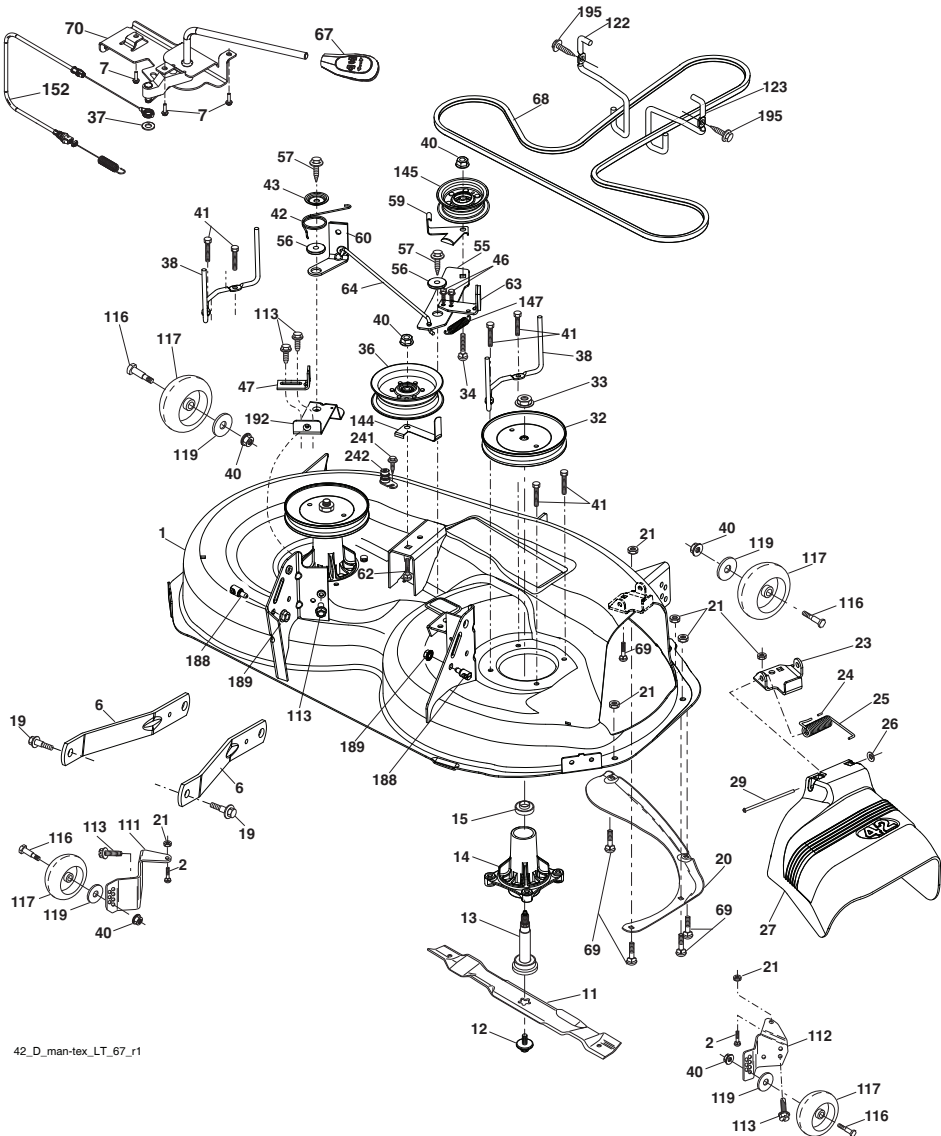
TRACTOR - - MODEL NUMBER 917.255810

MOWER DECK

KEY PART NO.	KEY PART NO.	DESCRIPTION	KEY PART NO.	KEY PART NO.	DESCRIPTION
1	196495X615	Mower Housing	63	199477	Arm Brake Mower
2	72140506	Bolt RDHD.SQNK. 5/16-18 unc x 3/4	64	199790	Linkage Brake
6	195186	Arm Suspension	67	198398X667	Handle, Clutch Cable
7	416358	Screw 10 x .750 BOS Thread	68	429636	V-Belt
11	424752	Blade, 3N1 Premium (For bagging or discharge)	69	72140505	Bolt Rdhd Sqnk 5/16-18 x 5/8
12	584309301	Screw Sems 7/16-20 x 1 Hex Hd.	70	199972	Clutch Asm. Manual
13	587256501	Shaft Assembly, Mandrel	111	404784	Bracket, Gauge Wheel LH
14	187281	Housing, Mandrel	112	404785	Bracket, Gauge Wheel RH
15	585323901	Bearing, Mandrel	113	17000510	Screw 5/16-18
19	196539	Bolt, Shoulder	116	4898H	Bolt, Shoulder
20	159770	Baffle, Vortex	117	188606	Wheel, Gauge
21	73680500	Nut, Crownlock 5/16-18 unc	119	19121414	Washer 13/32 x 7/8 x 14 Ga.
23	192557	Bracket, Deflector	122	197258	Keeper Belt Eng. LH
24	105304X	Cap, Sleeve	123	197259	Keeper Belt Eng. RH
25	197026	Spring, Torsion, Deflector	144	199204	Keeper Belt
26	110452X	Nut, Push	145	193197	Pulley, Idler, Flat
27	424469	Shield, Deflector	147	401971	Spring Return
29	131491	Rod, Hinge	152	584243501	Cable Clutch Manual w/Spr.
32	197473	Pulley, Mandrel	188	195161	Stud Fastener
33	400234	Nut, Toplock, Flanged	189	73900500	Nut Lock Hex Flange
34	72110612	Bolt Carr.Sh. 3/8-16 x 1-1/2 Gr. 5	192	197260	Bracket Brake Stand LH
36	197379	Pulley Idler	195	17000612	Screw Hexwsh Thdr 3/8-16 x 3/4
37	19131316	Washer 13/32 x 13/16 x 16 Ga.	241	152927	Screw
38	432520	Keeper Belt LH Mandrel	242	415598	Washout Port
40	73900600	Nut, Lock Flg. 3/8-16 unc	--	416405	Quick Connect Coupling
41	584953901	Bolt Hex Wshrhd 313-18 x 1.19	--	437732	Replacement Mower, Complete
42	198410	Spring Torsion Brake	--	587253301	Mandrel Assembly (Includes housing (key #14), shaft assembly (key #13), and bearing (key #15) only - pulley/nut/washer and blade bolt/washers not included)
43	197256	Spring Torsion Retainer			
46	137729	Screw Thd Roll 1/4-20 x 5/8			
47	197250	Bracket Clutch Cable			
55	437110	Arm, Idler			
56	199092	Spacer, Retainer			
57	17000616	Screw Hexwsh Thd 3/8-16 x 1			
59	141043	Guard, Tuv Idler (94)			
60	197261	Arm Brake Mower			
62	72110616	Bolt Rdhd Sqnk 3/8-16 unc x 2			

NOTE: All component dimensions given in U.S. inches
1 inch = 25.4 mm

MOWER DECK
TRACTOR - - MODEL NUMBER 917.255810



42_D_man-tex_LT_67_r1

ENGINE
TRACTOR - - MODEL NUMBER 917.255810

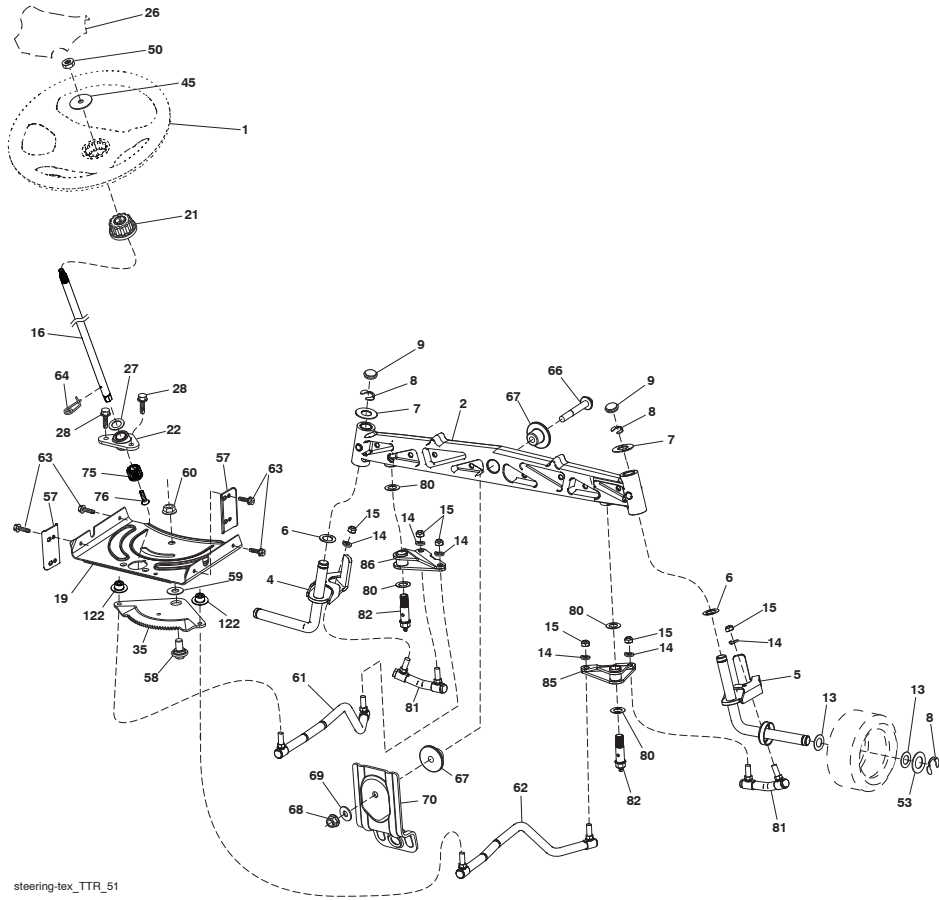
KEY PART NO.	NO.	DESCRIPTION
1	-----	Engine B&S Model No. 33R877-0002-G1 (585366801) (See engine breakdown.)
2	446760	Muffler
9	582540302	Keeper Belt Engine
12	586729001	Pulley Engine
15	433004	Tank Fuel
18	581176101	Cap Asm. Fuel
20	176636X428	Control Throttle/Choke
21	416358	Screw 10 x .750 BOS Thread
28	401137	Fuel Line
29	137180	Spark Arrester Kit
37	123487X	Clamp Hose
42	539990247	Washer Lock 7/16
45	73510400	Nut Keps Hex 1/4-20 unc
69	165291	Gasket
79	192334	Screw 5/16-18 x .75
81	148456	Tube, Drain
82	428287	Oil Drain
84	17060620	Screw 3/8-16 x 1-1/4
85	501606501	Bolt Hex 7/16-20 x 4 x Gr. 5-1.5
87	171877	Bolt 5/16-18 unc x 3/4 w/Sems
90	17000616	Screw 3/8-16 x 1.0
94	581880901	Exhaust Tube
96	19091416	Washer 9/32 x 7/8 x 16 Ga.
97	17670412	Screw 1/4-20 x 3/4
111	414119	Purge Line

NOTE: All component dimensions given in U.S. inches
 1 inch = 25.4 mm

Engine Power Rating Information

The gross power rating for individual gas engine models is labeled in accordance with SAE (Society of Automotive Engineers) code J1940 (Small Engine Power & Torque Rating Procedure), and rating performance has been obtained and corrected in accordance with SAE J1995 (Revision 2002-05). Torque values are derived at 3060 RPM; horsepower values are derived at 3600 RPM. Actual gross engine power will be lower and is affected by, among other things, ambient operating conditions and engine-to-engine variability. Given both the wide array of products on which engines are placed and the variety of environmental issues applicable to operating the equipment, the gas engine will not develop the rated gross power when used in a given piece of power equipment (actual "on-site" or net power). This difference is due to a variety of factors including, but not limited to, accessories (air cleaner, exhaust, charging, cooling, carburetor, fuel pump, etc.), application limitations, ambient operating conditions (temperature, humidity, altitude), and engine-to-engine variability. Due to manufacturing and capacity limitations, Briggs & Stratton may substitute an engine of higher rated power for this Series engine.

**TRACTOR - - MODEL NUMBER 917.255810
STEERING ASSEMBLY**



steering-tex_TTR_51

**TRACTOR - - MODEL NUMBER 917.255810
STEERING ASSEMBLY**

KEY PART NO.	PART NO.	DESCRIPTION
1	414803X428	Wheel, Steering
2	436870	Axle Asm., Front
4	436873	Spindle Asm., LH
5	436874	Spindle Asm., RH
6	6266H	Washer Thrust
7	121748X	Washer 25/32 x 1-5/8 x 16 Ga.
8	12000029	Ring, Klip #T5304-75
9	184946X667	Cap, Spindle
13	121749X	Washer 25/32 x 1-1/4 x 16 Ga.
14	10040600	Washer, Lock Hvy Hlcl Spr 3/8
15	73540600	Nut, Crown Lock 3/8-24 unf
16	587016002	Shaft Steering
19	194729	Plate Steering
21	586840201	Adapter, Wheel Steering Splnd Alum
22	585029901	Bearing Subasm Shaft Steer Low
26	414852X428	Insert, Wheel Steering
27	19211616	Washer 21/32 x 1 x 16 Ga.
28	17000612	Screw 3/8-16 x 3/4
35	440770	Gear, Sector Plate
45	587016401	Washer 3/8 ID 2-3/8OD 12 Ga.
50	73900600	Nut Lock Fig. 3/8-16 unc
53	188967	Washer Hardened .793 x 1.637 x .060
57	407465	Bracket Upstop
58	194747	Bolt Shoulder Sector Pivot CFM
59	194748	Washer Thrust Sector Steering
60	73971000	Nut Flange Lock 5/8-11
61	436884	Draglink LH
62	436885	Draglink RH
63	17000512	Screw 5/16-18 x 3/4
64	199849	Retainer Clip Spring Steering
66	71020748	Bolt Hex Fghd 7/16-14 x 3 Serr
67	194737	Bushing PM Front Axle
68	73900700	Nut Lock Flange 7/16-14 Gr. 5
69	199162	Washer 1.5 x .505 x .118
70	585338801	Bracket Deck Susp. Front
75	580683701	Pinion
76	580683601	Screw Head Sock
80	1370H	Washer
81	436887	Link RH
82	442147	Pivot Bolt
85	441873	Pivot RH
86	441872	Pivot LH
122	444962	Cap Gear

NOTE: All component dimensions given in U.S. inches
1 inch = 25.4 mm