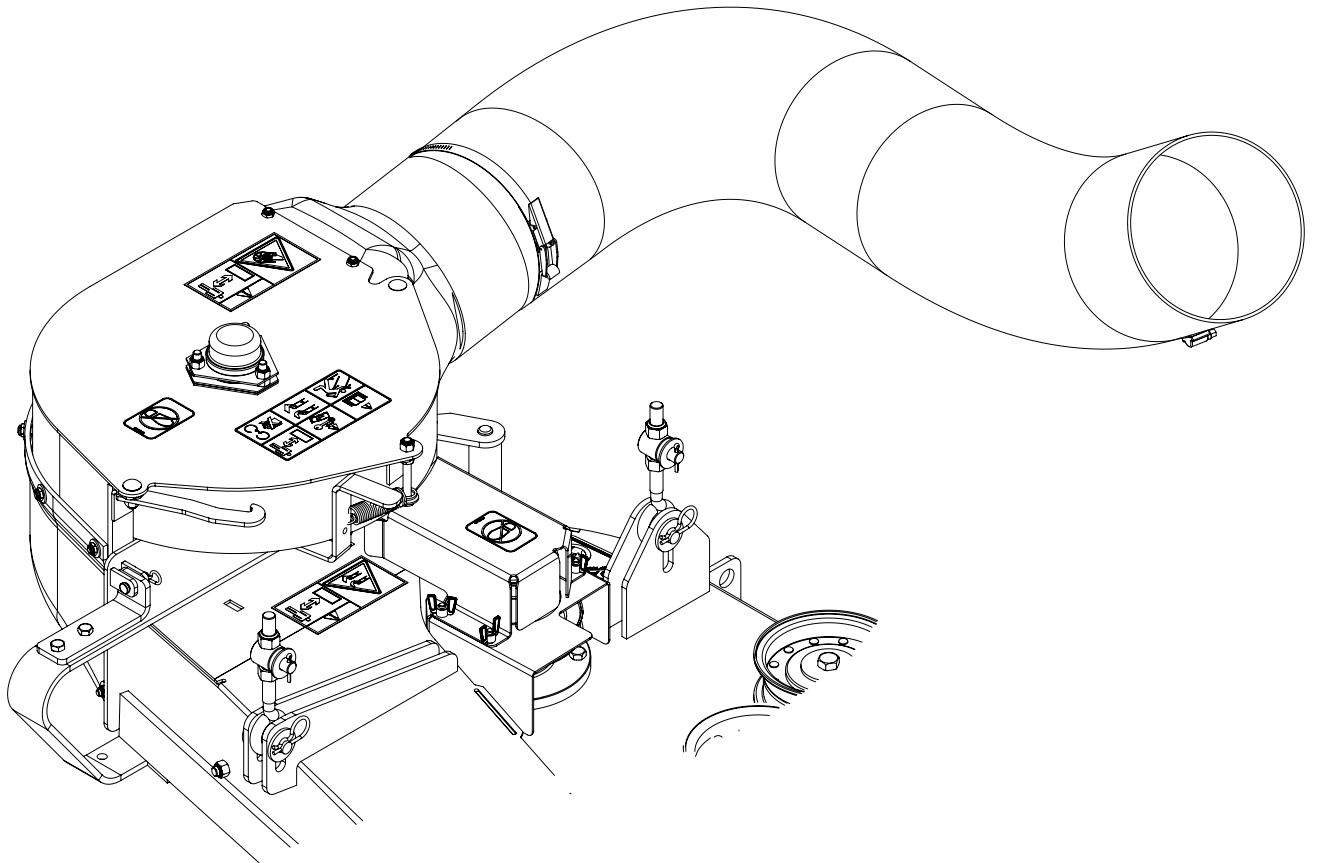


DIXON ZTR



Blower Kit

Operators Manual

Parts Manual

539 132900 52"
539 132901 60"

Please read these instructions carefully and make sure you understand them before using the machine.

CONTENTS

SAFETY RULES		OPERATION.....	12
GENERAL OPERATION.....	4	SERVICE.....	13
SLOPE OPERATION.....	4	CLEANING AND WASHING.....	13
CHILDREN	5	CARING FOR HOSES	13
SERVICE	5	STORAGE	13
COLLECTION SYSTEM.....	7		



WARNING

Engine exhaust, some of its constituents, and certain vehicle components contain or emit chemicals known to the State of California to cause cancer and birth defects or other reproductive harm.

SAFETY RULES



SAFE OPERATION PRACTICES FOR RIDE-ON MOWERS



DANGER !

THIS CUTTING MACHINE IS CAPABLE OF AMPUTATING HANDS AND FEET AND THROWING OBJECTS. FAILURE TO OBSERVE THE FOLLOWING SAFETY INSTRUCTIONS COULD RESULT IN SERIOUS INJURY OR DEATH.

I. GENERAL OPERATION

- Read, understand and follow all instructions in the manual and on the machine before starting.
- Allow only responsible adults, who are familiar with the instructions, to operate the machine.
- Clear the area of rocks, stones, toys, wire or other such objects that could be picked up and thrown by the blades.
- Be sure the area is clear of all people and pets before mowing. Stop the machine if anyone enters the area.
- Never carry passengers or children, even with blades off.
- Do not mow in reverse unless absolutely necessary. Always look down and behind before and while backing up.
- Watch out for traffic when crossing or operating near roadways.
- Use extra care when loading and unloading the machine onto a trailer or truck.
- Data indicates that operators, age 60 years and above, are involved in a large percentage of riding mower-related injuries. These operators should evaluate their ability to operate the riding mower safely enough to protect themselves and others from serious injury.
- **DO NOT** operate mower with grass catcher, unless the front weights are installed (if indicated as needed in the Operator's Manual).
- Keep machine free of grass, leaves or other debris buildup which can touch hot exhaust or engine parts and burn. Do not allow the mower deck to plow leaves or other debris that can cause a buildup to occur. Clean any oil or fuel spillage before operating or storing the machine. Allow machine to cool before storage.



WARNING

DO NOT tow with this mower. It may jackknife or over turn causing damage to the mower and possibly serious injury to the operator.

- Be aware of the mower discharge direction and do not direct it towards anyone. Do not operate the mower without either the entire grass catcher or the guard in place.
- Slow down before turning.
- Never leave the machine unattended when the engine is running. Always turn off the blades, set the parking brake, stop the engine and remove the key before leaving the machine.
- Turn off blades when not mowing.
- Stop engine before removing grass catcher or unclogging chute.
- Mow only in daylight or good artificial light.
- Do not operate the machine while under the influence of alcohol or drugs.

II. SLOPE OPERATION

Slopes are a major factor related to loss-of-control and tipover accidents, which can result in severe injury or death. All slopes require extra caution. If you cannot back up the slope or if you feel uneasy on it, do not mow it.

DO

- Mow up and down slopes (10° Max.), not across.
- Remove obstacles such as rocks, tree limbs.
- Watch for holes, ruts, or bumps. Uneven terrain could overturn the machine. **Tall grass can hide obstacles.**
- Use slow speed. Choose a low speed so that you will not have to stop while on the slope.
- Use extra care with grass catchers or other attachments. These can change the stability of the machine.
- Keep all movement on the slopes **slow** and **gradual**. Do not make sudden changes in speed or direction.
- Avoid starting or stopping on a slope. If tires lose traction, disengage the blades and proceed slowly **straight** down the slope.

SAFETY RULES



SAFE OPERATION PRACTICES FOR RIDE-ON MOWERS



DO NOT

- **Do not** turn on slopes unless necessary, and then, turn slowly and gradually downhill, if possible.
- **Do not** mow near drop-offs, ditches, or embankments. The mower could suddenly turn over if a wheel is over the edge of a cliff or ditch, or if an edge caves in.
- **Do not** mow on wet grass. Reduced traction could cause sliding.
- **Do not** try to stabilize the machine by putting your foot on the ground.
- Use extra care in handling gasoline and other fuels. They are flammable and vapors are explosive.
 - Use only an approved container.
 - Never remove gas cap or add fuel with the engine running.
 - Allow engine to cool before refueling.
 - Do not smoke.
 - Never refuel the machine indoors.
 - Never store the machine or fuel container inside where there is an open flame, such as a water heater.
- Never run a machine inside a closed area.

III. CHILDREN

Tragic accidents can occur if the operator is not alert to the presence of children. Children are often attracted to the machine and the mowing activity. **Never** assume that children will remain where you last saw them.

- **NEVER allow children to operate the machine.**
- Keep children out of the mowing area and under the watchful care of another responsible adult.
- Be alert and turn off the machine if children enter the area.
- Before and when backing, look behind and **down** for small children.
- Never carry children. They may fall off and be seriously injured or interfere with safe machine operation.
- Use extra care when approaching blind corners, shrubs, trees, or other objects that may obscure vision.

IV. SERVICE

- The operation of any mower can result in foreign objects thrown into the eyes, which can result in severe eye damage. Always wear safety glasses or eye shields while operating your mower or performing any adjustments or repairs. We recommend a wide vision safety mask over spectacles or standard safety glasses.



CAUTION

In order to prevent accidental starting when setting up, transporting, adjusting or making repairs, always disconnect spark plug wire and place wire where it cannot contact spark plug.

- Keep nuts and bolts, especially blade attachment bolts, tight and keep equipment in good condition.
- Never tamper with safety devices. Check there proper operation regularly.
- Keep machine free of grass, leaves, or other debris buildup. Clean oil or fuel spillage. Allow machine to cool before storing.
- Stop and inspect the equipment if you strike an object. Repair, if necessary, before restarting.
- Never make adjustments or repairs with the engine running.
- Grass catcher components are subject to wear, damage, and deterioration, which could expose moving parts or allow objects to be thrown. Frequently check components and replace with manufacturer's recommended parts, when necessary.
- Mower blades are sharp and can cut. Wrap the blade(s) or wear gloves, and use extra caution when servicing them.



WARNING

Engine exhaust, some of its constituents, and certain vehicle components contain or emit chemicals known to the State of California to cause cancer and birth defects or other reproductive harm.

SAFETY RULES



SAFE OPERATION PRACTICES FOR RIDE-ON MOWERS

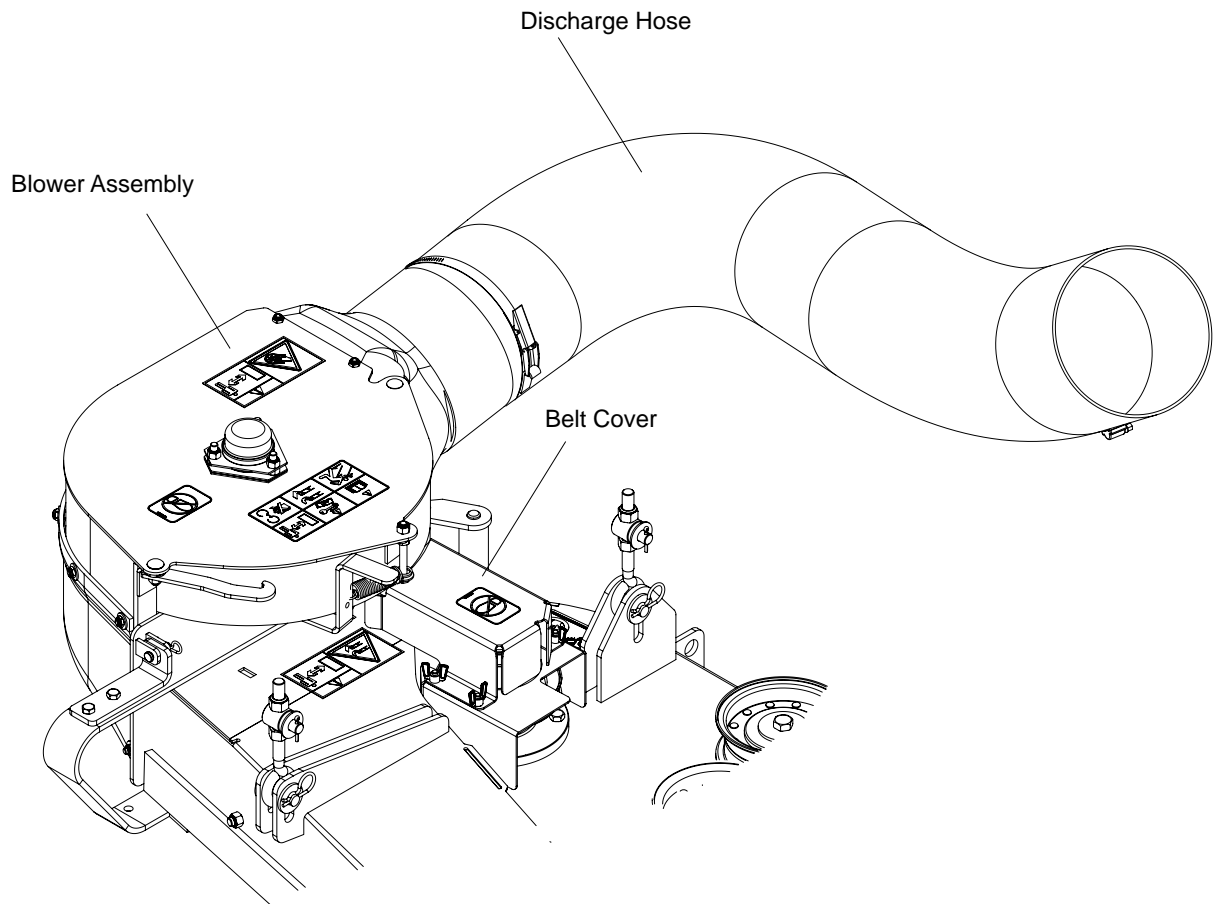


WARNING

Battery posts, terminals and related accessories contain lead and lead compounds, chemicals known to the State of California to cause cancer and birth defects or other reproductive harm. Wash hands after handling.

- Check brake operation frequently. Adjust and service as shown in the Operator's Manual.
- Be sure the area is clear of other people before mowing. Stop machine if anyone enters the area.
- Never carry passengers or children even with the blades off.
- Do not drive in reverse unless absolutely necessary. Always look down and behind before and while backing.
- Never carry children. They may fall off and be seriously injured or interfere with safe machine operation.
- Keep children out of the mowing area and under the watchful care of another responsible adult.
- Be alert and turn machine off if children enter the area.
- Before and when backing, look behind and down for small children.
- Mow up and down slopes (10° Max), not across.
- Remove obstacles such as rocks, tree limbs, etc.
- Watch for holes, ruts, or bumps. Uneven terrain could overturn the machine. Tall grass can hide obstacles.
- Use a slow speed while on slope or hill.
- Avoid starting or stopping on a slope. If tires lose traction, disengage the blades and proceed slowly straight down the slope.
- If machine stops while going uphill, disengage blades, shift into reverse and back down slowly.
- Do not turn on slopes unless necessary, and then, turn slowly and gradually downhill, if possible.

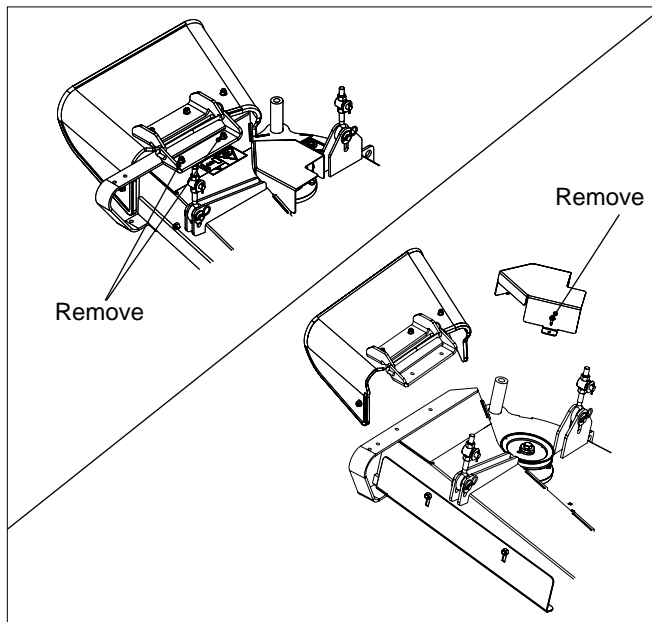
COLLECTION SYSTEM



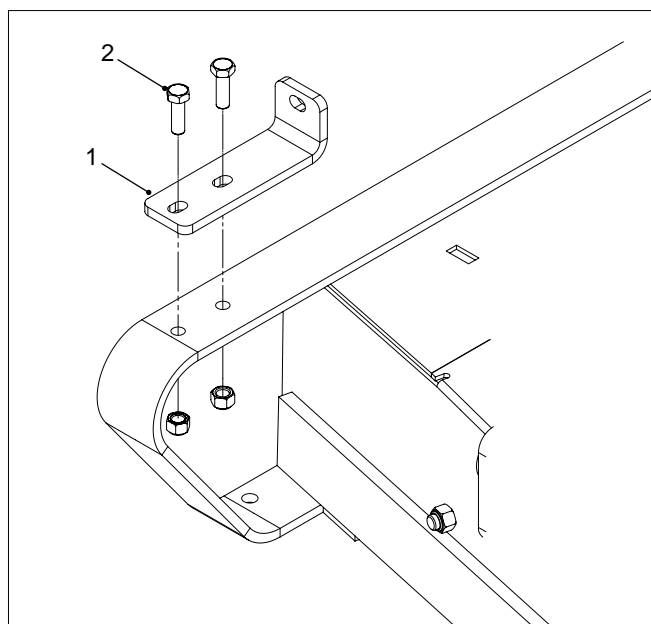
ASSEMBLY

1. Open Drive Kit box and remove all components.
2. Place mower deck in the lowest cutting height.

3. Remove deflector shield assembly by removing bolt, washer and nuts on the upper side.
4. Remove the belt shield from the right side pulley. Retain hardware for later use.



5. Attach front mounting bracket to deck with 1" bolts and nuts supplied in kit. To allow for adjustments during final installation, do not fully tighten nuts.
6. Slacken the tension on the deck belt and roll the belt off the deck pulley. (See Operator's Manual if necessary.)



1. Front Mounting Bracket
2. Bolts, 1"

ASSEMBLY

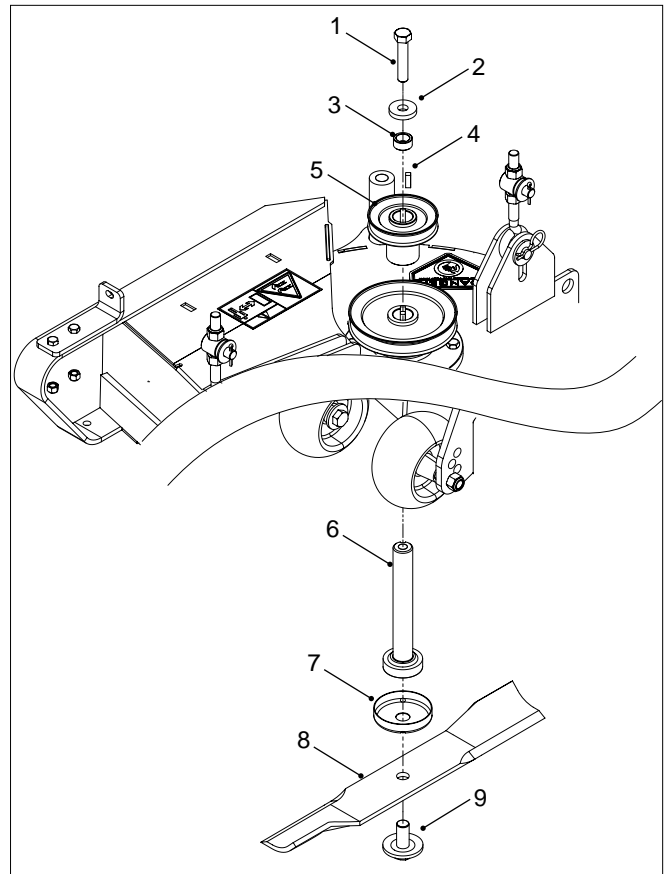
7. To replace the deck pulley spindle, remove pulley bolt and washer at the top of the pulley.
8. From the underside of the deck, slide the spindle shaft and blade out of the housing.



WARNING

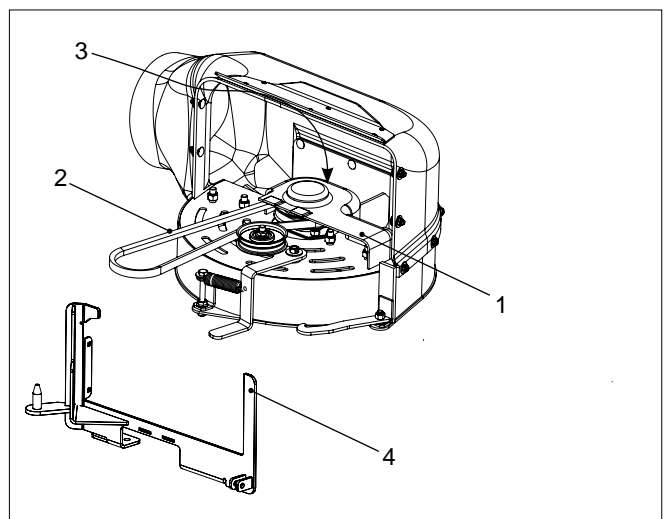
Blades are sharp. Protect your hands with gloves and/or wrap blades with a heavy cloth when handling.

9. Install new spindle shaft, blower drive pulley and hardware. See illustration. Torque pulley bolt to 45 ft/lbs Torque blade bolt to 90 ft/lbs.
10. Replace the deck belt onto the deck pulley.



- | | |
|--------------------------|--------------------|
| 1. Bolt, 1/2-20 x 2 1/2* | 6. Spindle Shaft* |
| 2. Washer* | 7. Bottom Dust Cap |
| 3. Spacer* | 8. Blade |
| 4. Spindle Key* | 9. Blade Bolt |
| 5. Pulley* | |
| * Supplied in Blower Kit | |

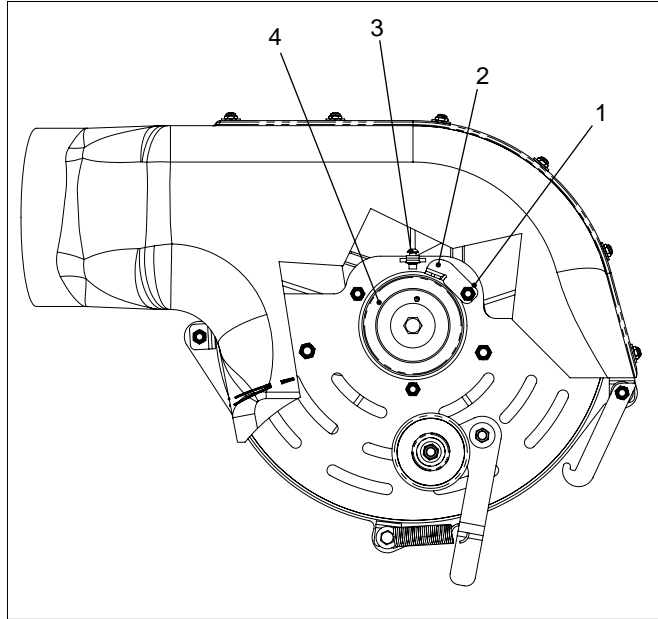
11. Place the blower assembly on its top.
12. Using a 5/32" Allen wrench, remove the screw on the rear of the pulley shield and set shield and screw aside.



1. Pulley Shield
2. Blower Belt
3. Rear Pulley Shield Screw
4. Deck Plate (removed for visibility)

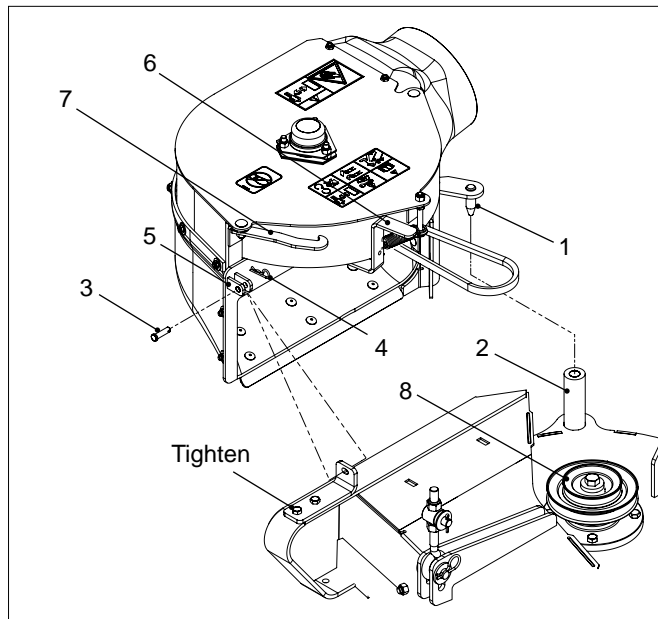
ASSEMBLY

13. Loosen the nut on the belt guide and install the belt on the pulley.
14. Place the belt guide approximately $\frac{1}{8}$ " away from the pulley and retighten the nut.
15. Reinstall the pulley shield and tighten nut securely.



1. Guide Nut
2. Belt Guide
3. Rear Pulley Shield Screw
4. Pulley

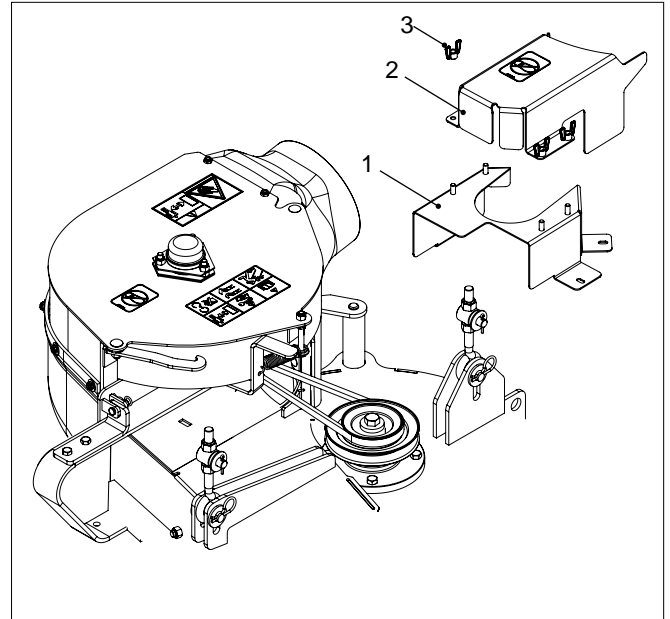
16. To mount the blower assembly to the deck, align the plate pin into the deck mounting tube. Slide the front mounting bracket between the two bracket ears. Pass the clevis pin through the bracket ears and secure with hair pin.
17. To allow belt installation, latch the idler arm into the idler keeper. Install the belt on the deck pulley and release the idler arm from the keeper.
18. Tighten hardware on front mounting bracket.



- | | |
|---------------|-----------------|
| 1. Plate Pin | 5. Bracket Ears |
| 2. Deck Tube | 6. Idler Arm |
| 3. Clevis Pin | 7. Idler Keeper |
| 4. Hair Pin | 8. Pulley |

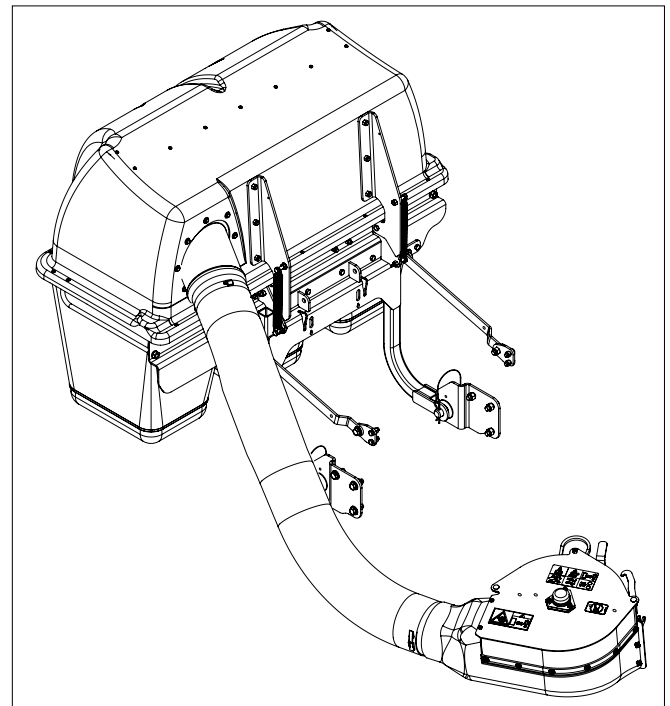
ASSEMBLY

19. Install the new lower belt shield, using hardware reserved from original deck shield.
20. Secure upper belt shield to lower belt shield with wing nuts.



1. Lower Belt Shield
2. Upper Belt Shield
3. Wing Nut

21. The supplied discharge hose is of universal length and may need to be shortened/trimmed to suit application. If the kit is used on an older collection system, the hood opening may also require minor trimming of the outlet hole.



OPERATION

NEVER USE THE COLLECTION SYSTEM WITHOUT THE BLOWER ASSEMBLY AND HOSES SECURELY ATTACHED.

Follow the mower operation instructions in your mower operator's manual.

When operating your grass catcher on a lawn where grass and leaf bagging equipment has not been used, you are picking up thatch and debris that has accumulated for long periods of time. The amount collected and the total time of operation may be greater than you will experience with regular use of your grass catcher.

- Always run throttle at full speed when bagging.
- Select a speed low enough to give good mower cutting performance, good quality cut and good bagging performance.

NOTE: It may be necessary to overlap width of cut to suit your conditions.

- In heavy grass it may be necessary to mow and collect at a slower ground speed.
- If grass is extremely tall, it should be mowed twice. The first time relatively high, the second time to desired height.
- Make sure hoses are connected at both ends. Inspect hoses prior to each use.
- Never attempt to unclog the collection system until the mower's engine is shut off and all moving parts come to a complete stop.
- Avoid cutting wet grass or mowing in the morning while the dew is still heavy. Grass clippings collected under these conditions tend to be sticky and adhere to the walls of the flow path, causing clogging.
- Do not stand behind vent at the rear of collection system. There is potential for small pieces of blowing debris to escape through the vent.
- Wear eye and ear protection.
- If the grass catcher fails to pick up cut grass or leaves, it is an indication that clogging has occurred in the system or that the grass catcher containers are full.



CAUTION

- **DO NOT** operate mower with collection system partially installed.
- **Disengage blades and stop engine before leaving mower seat to empty containers, unclogging chutes or servicing.**
- **Close cover before starting.**
- **Disengage mower blades when crossing driveways, gravel surfaces and or areas where thrown objects could be a hazard.**
- **DO NOT** attempt to vacuum up cans or other potentially hazardous projectiles.



CAUTION

BEFORE PERFORMING ANY MAINTENANCE, SERVICE OR ADJUSTMENTS:

- **Set parking brake.**
- **Place motion control levers in "NEUTRAL" position.**
- **Place clutch control in "DISENGAGED" position.**
- **Turn ignition key to "OFF" position.**
- **Make sure blades and all moving parts have completely stopped.**
- **Disconnect spark plug wire(s) from spark plug(s) and place wire where it cannot come in contact with plug.**



WARNING

The collection system hopper must be completely empty while driving forward onto a trailer. If the mower must be loaded onto a trailer while there is still debris in the container, the mower must be backed up onto the trailer to avoid tipping.

SERVICE

Cleaning and Washing

Regular cleaning, washing and lubricating will prolong the service of the machine.

NOTE: Use care with power washers to avoid damage to decals. Limit direct spray on these items.

DO NOT EXCEED 1000 PSI WATER PRESSURE FOR CLEANING.

Caring For Hoses

1. Inspect hoses before each use. If hoses have excessive wear, tears, or punctures, replace immediately.
2. To prolong the life of the hose, periodically rotate hose and turn hose end to end. Refer to Preventative Maintenance Schedule in this manual.
3. Avoid twists and sharp turns in the hoses, as they will increase wear on the hoses.
4. Avoid dragging the lower hose along the sides of buildings or other hard surfaces.

Storage

When grass catcher is to be stored for a period of time, clean it thoroughly, remove all dirt, grass, leaves, etc. Store in a clean, dry place. Covered or indoor storage is recommended.



CAUTION

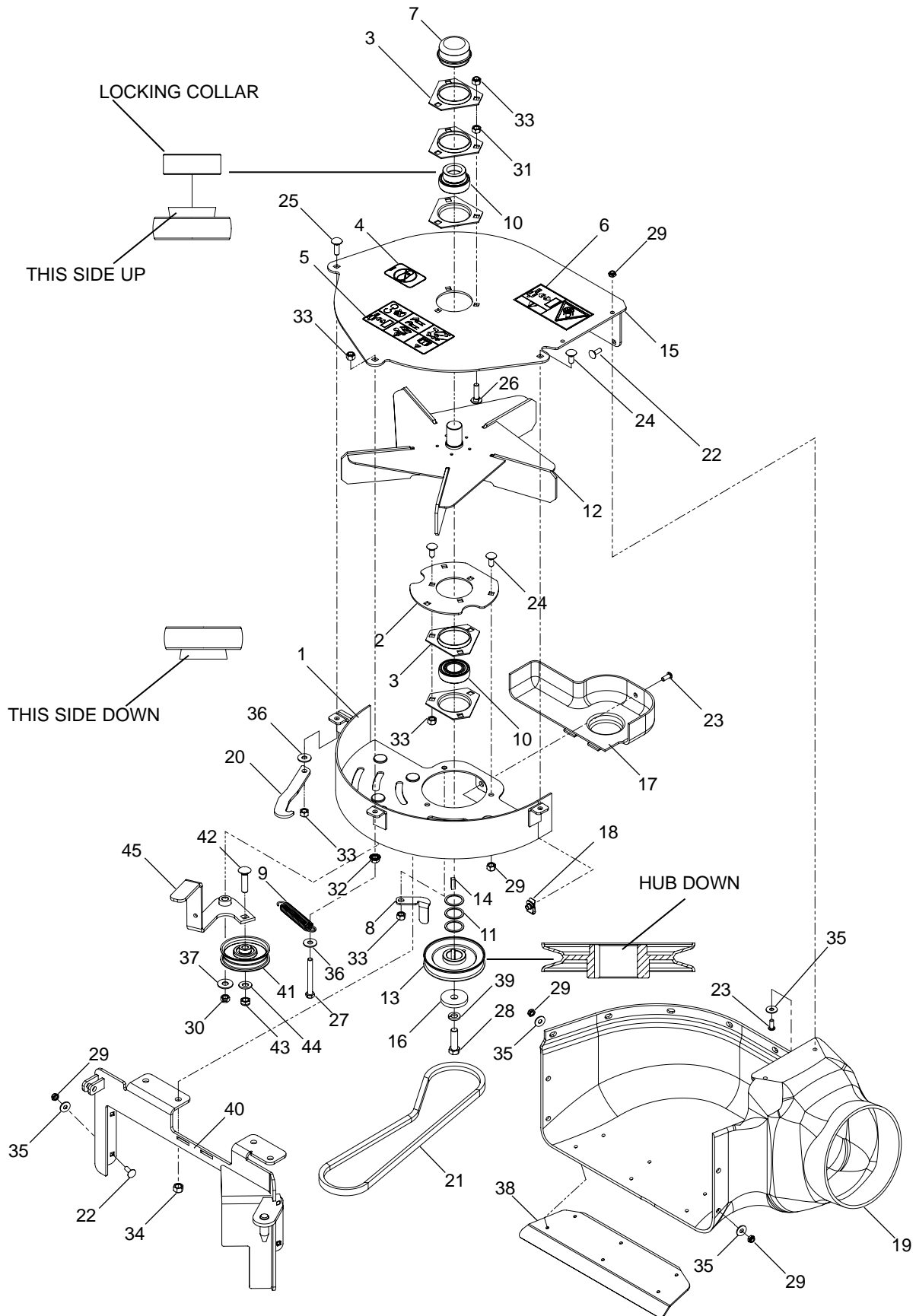
Do not leave grass in bagger containers. Empty containers after each use and before storing. Failure to do so may result in spontaneous combustion which could develop into a fire.



CAUTION

Grass catcher components are subject to wear, damage and deterioration, which could expose moving parts or allow objects to be thrown. Frequently check components and replace with manufacturer's recommended parts, when necessary.

PARTS

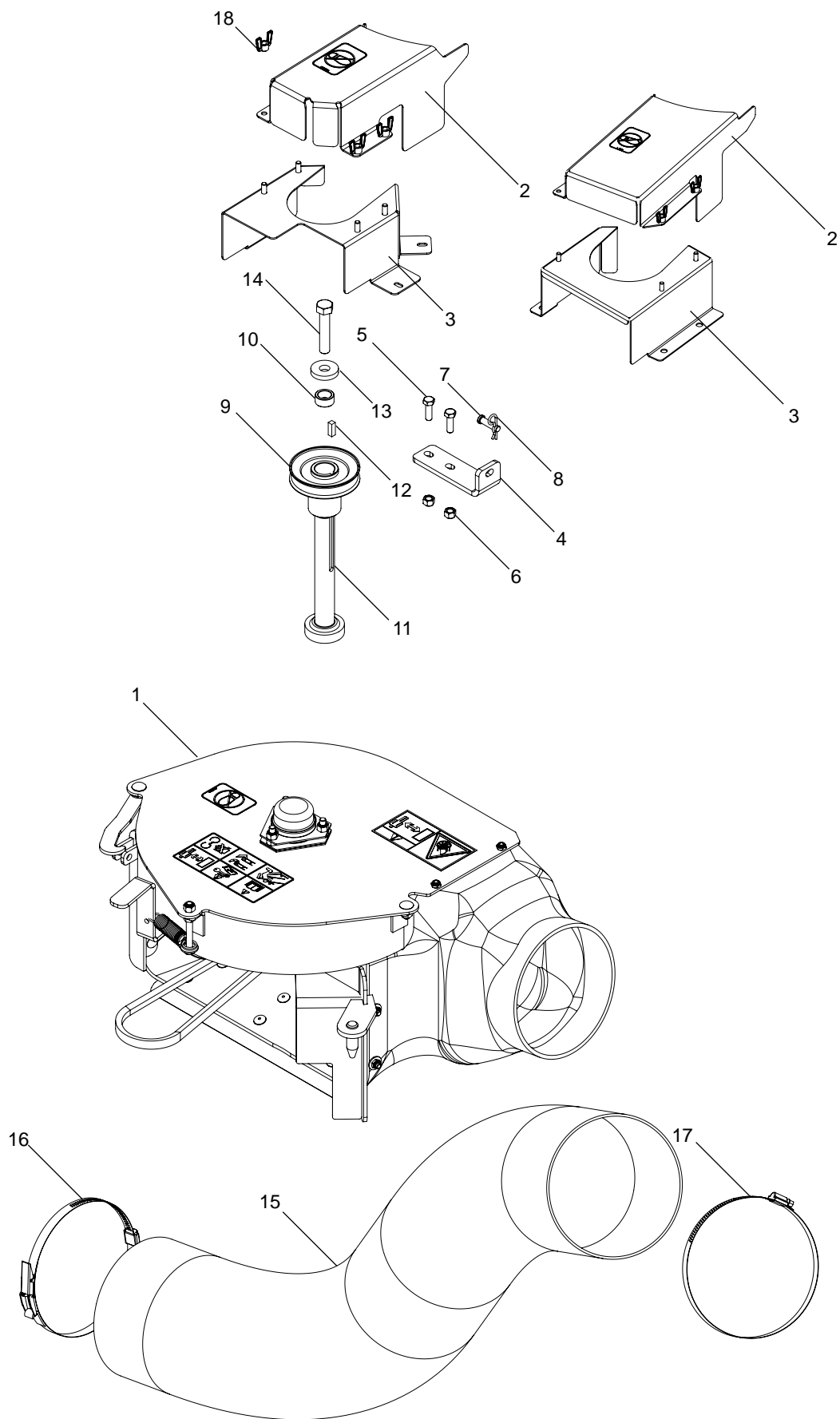


PARTS

ITEM	PART NO.	QTY.	DESCRIPTION	ITEM	PART NO.	QTY.	DESCRIPTION
1..	539 111225	...1	...FLOOR WELDMENT	24..	539 990316	...7	...RHSNB $\frac{5}{16}$ -18 x $\frac{3}{4}$
2..	539 111227	...1	...BEARING PLATE	25..	539 990208	...1	...RHSNB $\frac{5}{16}$ -18 x 1
3..	539 102691	...5	...FLANGETTE	26..	539 100472	...3	...RHSNB $\frac{5}{16}$ -18 x $1\frac{1}{4}$
4..	539 105743	...1	...DECAL, NO STEP	27..	539 101721	...1	...HCS $\frac{5}{16}$ -18 x $2\frac{3}{4}$
5..	539 105785	...1	...DECAL, WARNING	28..	539 100141	...1	...HCS $\frac{7}{16}$ -20 x $1\frac{1}{2}$
6..	539 106741	...1	...DECAL, SEVERING	29..	539 108120	.12	...NUT $\frac{1}{4}$ -20 HEX THIN NYLOC
7..	539 102535	...1	...GREASE CAP	30..	539 990184	...1	...NUT $\frac{5}{16}$ -18 HEX CTRLK
8..	539 1111841BELT GUIDE	31..	539 990196	...3	...NUT, $\frac{5}{16}$ -18 HEX
9..	539 916159	...1	...SPRING	32..	539 990585	...1	...NUT $\frac{5}{16}$ -18 HEX WHIZLK
10..	539 106786	...2	...BEARING	33..	539 990717	.12	...NUT $\frac{5}{16}$ -18 HEX NYLOC
11..	539 102244	...3	...BUSHING, MACHINE 18 GA	34..	539 976979	...4	...NUT $\frac{3}{8}$ -16 HEX NYLOC
12..	539 110111	...1	...FAN WELDMENT	35..	539 990598	.12	...WASHER, $\frac{1}{4}$ STD FLT
13..	539 106713	...1	...SHEAVE	36..	539 990692	...2	...WASHER, $\frac{5}{16}$ STD FLT
14..	539 102067	...1	...KEY $\frac{1}{4}$ SQ x $\frac{3}{4}$	37..	539 990517	...1	...WASHER, $\frac{5}{16}$ STD FLT
15..	539 106752	...1	...FAN COVER WLDMT	38..	539 132939	...1	...SKID PLATE
16..	539 106504	...1	...HEAVY WASHER	39..	539 990247	...1	...WASHER, $\frac{7}{16}$ SPLT LOCK
17..	539 111747	...1	...PULLEY SHIELD, 72	40..	539 132911	...1	...DECK PLATE, 52
18..	539 110813	...1	...RETAINER, "U" TYPE		539 132926	...1DECK PLATE, 60
19..	539 111746	...1	...BLOWER HOUSING	41..	539 106721	...1	...IDLER
20..	539 110103	...1	...IDLER KEEPER	42..	539 109345	...1	...RHSNB, $\frac{3}{8}$ -16 x $1\frac{1}{2}$
21..	539 132923	...1	...BELT, 52	43..	539 200282	...1	...NUT, $\frac{3}{8}$ -16 HEX JAM NYLOC
	539 132938	...1BELT, 60	44..	539 990122	...1	...WASHER, $\frac{3}{8}$ SAE FLT
22..	539 990074	.10	...RHSNB $\frac{1}{4}$ -20 x $\frac{3}{4}$ GR2	45..	539 111218	...1	...IDLER ARM
23..	539 111229	...3	...SCREW $\frac{1}{4}$ -20 x $\frac{5}{8}$ SKT HD				

NOTE: ALL FASTENERS ARE GRADE 5 UNLESS OTHERWISE SPECIFIED.

PARTS



PARTS

ITEM	PART NO.	QTY.	DESCRIPTION
1..	539 132902	...1	... BLOWER ASSEM 52
	539 132903	...1 BLOWER ASSEM 60
2..	539 132957	...1	... BELT SHIELD, UPPER 52
	539 132962	...1 BELT SHIELD, UPPER 60
3..	539 132954	...1	... BELT SHIELD, LOWER 52
	539 132959	...1 BELT SHIELD, LOWER 60
4..	539 132924	...1	... BRACKET, MOUNTING 52
	539 132931	...1	... BRACKET, MOUNTING 60
5..	539 990209	...2	... HCS $\frac{5}{16}$ -18 x 1
6..	539 990717	...2	... NUT $\frac{5}{16}$ -18 HEX NYLOC
7..	03871	... CLEVIS PIN
8..	539 915067	...1	... HAIR PIN

ITEM	PART NO.	QTY.	DESCRIPTION
9..	539 132922	...1	... PULLEY, 52
	539 132937	...1	... PULLEY, 60
10..	539 132996	...1	... SPACER, PULLEY
11..	539 117912	...1	... SPINDLE SHAFT
12..	539 116196	...1	... KEY, OUTER SHAFT
13..	539 115636	...1	... WASHER, $\frac{1}{2}$ x $1\frac{3}{8}$ x $\frac{1}{4}$
14..	539 115549	...1	... HCS $\frac{1}{2}$ -20 x $1\frac{1}{2}$
15..	539 111287	...1	... DISCHARGE HOSE
16..	539 109901	...1	... BAND, OVER CENTER
17..	970761	... HOSE CLAMP
18..	539 990997	...4	... WINGNUT

NOTE: ALL FASTENERS ARE GRADE 5 UNLESS OTHERWISE SPECIFIED.

