

**D Gebrauchsanweisung**

Filter-Set 5000

---

**GB Operating Instructions**

Filter Set 5000

---

**F Mode d'emploi**

Kit de filtrage 5000

---

**NL Gebruiksaanwijzing**

Filterset 5000

---

**S Bruksanvisning**

Filtersats 5000

---

**I Istruzioni per l'uso**

Set filtro 5000

---

**E Manual de instrucciones**

Set de filtro 5000

---

**P Instruções de utilização**

Conjunto de filtragem 5000

---

**DK Brugsanvisning**

Filtersæt 5000

# GARDENA Filter Set 5000

Welcome to GARDENA aquamation...



Please read these operating instructions carefully and follow the instructions. Use the instructions to familiarise yourself with the Filter Set, using it correctly and the safety information.



For safety reasons, children and young people under 16 years of age and people who are not acquainted with these operating instructions should not use this Filter Set.

→ Please keep these operating instructions in a safe place.

## Contents

1. The Applications Range of Your GARDENA Filter Set	10
2. For Your Safety	10
3. Mode of Operation of the Filter	12
4. Putting into Operation	12
5. Maintenance	13
6. Trouble-Shooting	14
7. Putting out of Operation	15
8. Technical Data	15
9. Service	15

## 1. The Applications Range of Your GARDENA Filter Set

### Intended purpose

The GARDENA filter set is intended for domestic use in your garden where it should only be used alongside or in your garden pond for cleaning garden ponds up to 5 m<sup>3</sup> in size with and without fish.

### Please note



The GARDENA Filter Set is not suitable for industrial use or in combination with chemicals, food, easily combustible and explosive substances. It is not intended for operating watering equipment and systems.

## 2. For Your Safety

### Operating the pump

The pump should be operated via a residual current device with a residual current rating of ≤ 30 mA (DIN VDE 0100-702 and 0100-738).

→ Please ask your electrician for his advice.

The pump must be placed on solid, even ground.

### Mains power cables

Mains power cables should not have a smaller cross-section than a rubber sheathed cable of the designation H05 RNF. Extension cables must meet the requirements of DIN VDE 0620.

### For Austria

In Austria power cables should correspond to ÖVE-EM 42, T2 (2000)/1979 § 22 according to § 2022.1. According to this standard pumps used in swimming pools and ponds should only be operated via an isolating transformer.

→ Please contact your electrician.

### For Switzerland

In Switzerland mobile appliances which are used outdoors, must be connected via a residual-current device.

### Visual check

Before operating the pump, look to see if there is any damage of the pump (esp. regarding power cable and plug). A damaged pump must not be used. In case of damage, please have the pump checked by our GARDENA Service Centre or by an authorised electrician.

### Check line voltage

Data indicated on the type plate must match technical data of the mains supply.

### Do not operate pump when there are people in the water

The pump must not be operated when there are people in the water.

### Swimming pools and garden ponds

Swimming pools and garden ponds should be designed according to international and national design regulations.

→ Please consult a professional electrician.

### Do not use power cable to carry the pump

Do not use the power cable to carry the pump or to pull the plug out of the socket. Protect the power cable from heat, oil and sharp edges.

### Disconnect plug

Always unplug the equipment when dismantling the set, when it is not in use and before maintenance.

→ Always disconnect the pump from the mains before undertaking any work on it.

→ Please follow the safety and assembly instructions in these operating instructions.

### Temperature of the liquid used

The temperature of the liquid used must not be below 4 °C or above 35 °C.

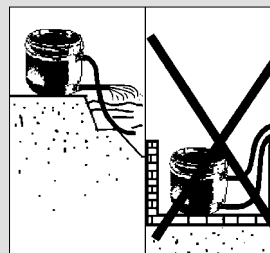
### Wear and reduced output

Sand and other abrasive substances in the liquid cause increased wear and reduce the output of the pump.

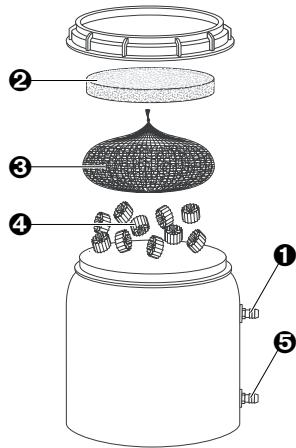
### Positioning the filter

→ Place the filter in a stable position alongside or in your garden pond.

If the filter is placed alongside the pond, it must be set up above the surface of the pond.



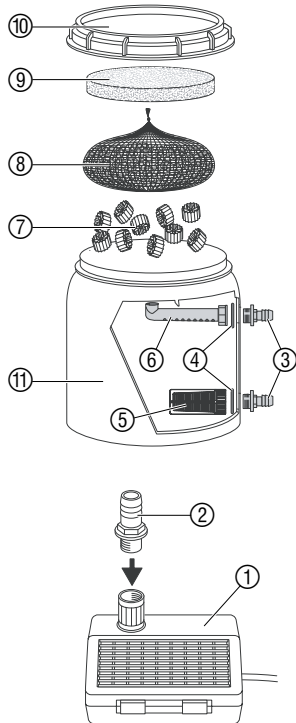
### 3. Mode of Operation of the Filter



- 1 Water intake**  
Connection for the hose to the pump in the pond.
- 2 Mechanical filtering**  
Foam filter mat for filtering out coarse dirt particles.
- 3 Biological filtering**  
The pollutants and surplus nutrients are bonded to the filter pellets and broken down.
- 4 Bio-surface filters**  
The basis for biological water treatment by building up micro-organisms.
- 5 Water outlet**  
Connection for the hose to return the purified water to the pond.

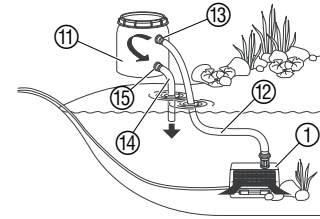
### 4. Putting into Operation

#### Assemble the filter set:



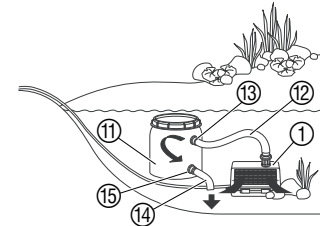
1. Unscrew the filter cover ⑩ from the filter container ⑪ and remove the contents.
2. Insert both connection pieces ③ from outside into the filter container and place both sealing rings ④ on to the connection pieces from inside.
3. Screw filter ⑤ on to the lower connection piece ③ from inside.
4. Screw the threaded section with outlet ⑥ from inside on to the upper connection piece ③.  
*The outlet should point upwards.*
5. Place bio-surface filters ⑦ into the filter container.
6. Place the filter pellets in the net ⑧ and spread the net over the bio-surface filters ⑦.
7. Place the foam filter mat ⑨ in the filter container in such a way that the foam filter mat covers the net ⑧ completely.  
*The outlet ⑥ is now above the foam filter mat ⑨.*
8. Screw the filter cover ⑩ on to the filter container ⑪.
9. Screw the connection piece ② on to the pump ①.
10. Decide on the location for the filter.
11. Decide on the length of the pressure hose ⑫ and the discharge hose ⑭.
12. Cut the hose supplied to correspond to the two hose lengths.
13. Connect the pressure hose to the connection piece ②.

#### Starting up the filter set:



#### Filter set up alongside the pond:

1. Place the filter container ⑪ in a stable position alongside the garden pond.
2. Set up the pump ① in a stable position in the garden pond so that the pump is completely covered with water.
3. Connect the pump pressure hose ② to the upper filter connection ⑬ (max. 50 cm above the surface of the pond).
4. Connect the discharge hose ⑭ to the lower filter connection ⑮ (at least 5 cm above the surface of the pond) and route into the pond.
5. Plug mains plug into a 230 V AC socket.  
*Warning: The pump will start immediately!*



#### Filter set up in the pond:

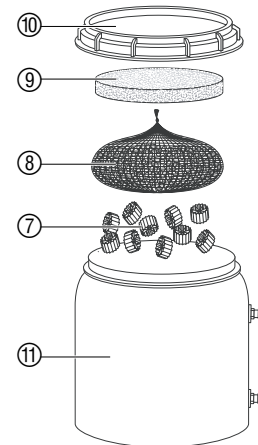
1. Connect the pressure hose of the pump ⑫ to the upper connection ⑬ of the filter and the discharge hose ⑭ to the lower connection of the filter ⑮.
2. Unscrew filter cover ⑩ so that the filter container is filled with water and does not float.
3. Set up the pump ① and filter container ⑪ in a stable position in the garden pond so that both are completely covered with water and screw the filter cover ⑩ on again under water.
4. Plug mains plug into a 230 V AC socket.  
*Warning: The pump will start immediately!*

#### Do not allow the pump to run without water:

Do not allow the pump to run without water because dry-running leads to an undesirable build up of heat and will destroy the pump.

### 5. Maintenance

#### Cleaning the filter:

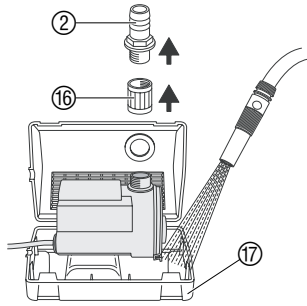


The GARDENA filter is largely maintenance-free. However, it must be cleaned when necessary.

1. Unplug the pump.
2. Remove the filter cover ⑩.
3. Remove the foam filter mat ⑨ and clean it under running water.
4. Remove the net containing the filter pellets ⑧ and place it in a solution of cooking salt (20 g salt / litre) for approximately 24 hours.
5. Then rinse the net ⑧ with fresh lukewarm water.
6. Place the bio-surface filter ⑦ in clean water.  
*Do not clean under running water because this will destroy the micro-organisms.*
7. Empty the filter container completely and clean under running water.
8. Reassemble filter in reverse order.
9. Start the filter up again  
(see 4. Putting into Operation: "Starting up the filter set").

We recommend cleaning the filter pellets approximately every 6 months (e.g. in salt water) or replacing them to guarantee that the filter pellets are still able to work properly.

Please contact GARDENA Service about replacing the filter pellets.

**Cleaning the pump:****Cleaning the pump filter housing:**

The water intake slots on the water feature pump must be free from dirt.

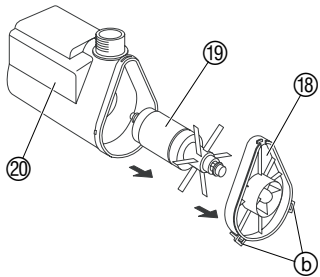
1. Unplug the pump from the mains.
2. Remove the pump from the pond.
3. Unscrew threaded sleeve ⑫ and connection piece ⑮.
4. Open up the pump filter housing ⑰ and spray clean with a jet of water.
5. Clean the water intake slots of the filter housing ⑰ with a brush.

**Note:**

Do not use any hard objects or powerful detergents for cleaning the set!

**Remove dirt deposits in the pump:**

1. Unplug the pump from the mains.
2. Remove the pump from the pond.
3. Unscrew threaded sleeve ⑫ and connection piece ⑮.
4. Open up pump filter housing ⑰ and remove the pump.
5. Open the snap hook ⑥ and take the pump cover ⑱ off the motor housing ⑳.
6. Draw the impeller unit ⑲ out of the motor housing ⑳.
7. Remove any dirt deposits from pump components.
8. Replace the impeller unit ⑲ in the motor housing ⑳.
9. Press the pump cover ⑱ into the motor housing ⑳ until the connection is heard to snap into place.

**6. Trouble-Shooting**

Fault	Possible Cause	Remedy
<b>The water is not clear.</b>	The pond is extremely dirty and rich in nutrients.	<ol style="list-style-type: none"> <li>1. Check nitrate concentration (e. g. with the GARDENA Pond Test Set, Art. No. 7920)</li> <li>2. If necessary, change the water and clean the pond.</li> </ol>
	Filter pellets dirty.	→ Clean filter and filter pellets.
	Too many fish and creatures in the pond.	→ Add up the estimated length of the fish. There should only be "80 cm fish" per m <sup>3</sup> water in the pond.
<b>Pump does not work.</b>	Connections are faulty.	→ Check connections.
	Impeller unit blocked.	→ Remove dirt deposits in the pump (see 5. Maintenance).

If any other faults arise, please contact GARDENA Service.

**7. Putting out of Operation****Wintering/Storage:**

1. Before frosts commence, remove the Filter Set from the pond, take the hose off the pump and empty the filter completely.
2. Clean the Filter Set.
3. Store filter and pump in a frost-free place.
4. Store the pump in a container filled with water so that the pump does not dry out.  
*Ensure that the mains plug is not in the water.*

**Store out of reach of children.**

**8. Technical Data**

<b>Art. No.</b>	<b>7919</b>
<b>Rated power</b>	14 W
<b>Flow</b>	900 l/h
<b>Max. delivery head</b>	1.5 m
<b>Max. submersion depth</b>	1.0 m
<b>Power cable</b>	10 m H05 RNF
<b>Fitting</b>	G 1/2
<b>Max. media temperature</b>	35 °C
<b>Mains voltage / Frequency</b>	230 V / 50 Hz
<b>Noise level L<sub>WA</sub><sup>1)</sup></b>	48 dB (A)

1) Measuring method according to EN 60335-1

**9. Service****Warranty**

GARDENA guarantees this product for 2 years (from date of purchase). This guarantee covers all serious defects of the unit that can be proved to be material or manufacturing faults. Under warranty we will either replace the unit or repair it free of charge if the following conditions apply:

- The unit must have been handled properly and in keeping with the requirements of the operating instructions.
- Neither the purchaser or a non-authorized third party have attempted to repair the unit.

The impeller unit and the filter pellets are wearing parts and are not covered by the guarantee.

This manufacturer's guarantee does not affect the user's existing warranty claims against the dealer/seller.

If you have any problems with your pump, please contact our Customer Service or return the defective unit together with a short description of the problem directly to one of the GARDENA Service Centres listed on the back of this leaflet.



### **Product Liability**

We expressly point out that, in accordance with the product liability law, we are not liable for any damage caused by our units if it is due to improper repair or if parts exchanged are not original GARDENA parts or parts approved by us, and, if the repairs were not carried out by a GARDENA Service Centre or an authorised specialist. The same applies to spare parts and accessories.

### **EU Certificate of Conformity**

The undersigned

GARDENA Kress + Kastner GmbH · Hans-Lorenser-Str. 40 · D-89079 Ulm

hereby certifies that, when leaving our factory, the unit indicated below is in accordance with the harmonised EU guidelines, EU standards of safety and product specific standards.

This certificate becomes void if the unit is modified without our approval.

<b>Description of the unit:</b>	Pump
<b>Type:</b>	1543
<b>Art. No.:</b>	7919
<b>EU directives:</b>	Low Voltage Directive 73/23/EC Electromagnetic Compatibility 89/336/EC
<b>Harmonised European standards:</b>	EN 55014-1 / EN 55014-2 EN 60335-1 / EN 60335-2-41 EN 61000-3-2 / EN 61000-3-3
<b>Year of CE marking:</b>	2001

Ulm, 28.11.2001

Thomas Heintl  
Technical Dept. Manager

**Deutschland**

GARDENA Kress + Kastner GmbH  
GARDENA Service  
Hans-Lorenser-Straße 40  
D-89079 Ulm  
Produktfragen: (07 31) 490-123  
Reparaturen: (07 31) 490-290

**Argentina**

Argensem S.A.  
Venezuela 1075  
(1618) El Talar - Buenos Aires

**Australia**

NYLEX Consumer Division  
76-88 Mills Road  
P.O. Box 722  
Braeside 3195  
Melbourne, Victoria

**Austria**

GARDENA Österreich Ges. m.b.H.  
Stettnerweg 11-15  
2100 Korneuburg

**Belgium**

MARKT (Belgium) NV/SA  
Sterrebeekstraat 163  
1930 Zaventem

**Brazil**

M. Cassab  
Av. das Nações Unidas, 20.882  
Santo Amaro, CEP 04795-000  
São Paulo - S.P.

**Bulgaria / България**

ДЕНЕКС ООД  
Бул. "Г.М.Димитров" 16 ет.4  
София 1797

**Canada**

GARDENA Canada Ltd.  
100, Summerlea Road  
Brampton, Ontario  
Canada L6T 4X3

**Chile**

Antonio Martinic Y CIA. LTDA.  
Gilberto Fuenzalida 185 Loc.  
Las Condes - Santiago de Chile

**Costa Rica**

Compania Exim  
Euroiberoamericana S.A.  
350 Sur del Automercado  
Los Yoses  
San Pedro

**Cyprus**

FARMOKIPIKI LTD  
P.O. Box 7098  
74, Digeni Akrita Ave.  
1641 Nicosia

**Czech Republic**

GARDENA spol. s.r.o.  
Řípská 20a, č.p. 1153  
62700 Brno

**Denmark**

GARDENA Danmark A/S  
Naverland 8  
2600 Glostrup

**Finland**

Habitec Oy  
Martinkyläntie 52  
01720 Vantaa

**France**

GARDENA France  
Service Après-Vente  
BP 50080  
95948 ROISSY CDG Cedex

**Great Britain**

GARDENA UK Ltd.  
27-28 Brenkley Way  
Blezard Business Park  
Seaton Burn  
Newcastle upon Tyne NE13 6DS

**Greece**

Agrokip G. Psomadopoulos & Co.  
33a, Ifestou str.  
Koropi 194 00  
Athens

**Hungary**

GARDENA Magyarország Kft.  
Késmárk utca 22  
1158 Budapest

**Iceland**

Heimilistaeki hf  
Saetun 8  
P.O. Box 5340  
125 Reykjavik

**Republic of Ireland**

Michael McLoughlin & Sons  
Hardware Limited  
Long Mile Road  
Dublin 12

**Italy**

GARDENA Italia S.r.l.  
Via Donizetti 22  
20020 Lainate (Mi)

**Japan**

KAKUDAI Mfg. Co. Ltd.  
1-4-4, Itachibori Nishi-ku  
Osaka 550

**Luxembourg**

Magasins Jules Neuberg  
Grand Rue 30  
Case Postale No. 12  
Luxembourg 2010

**Netherlands**

GARDENA Nederland B.V.  
Postbus 50176  
1305 AD ALMERE

**Neth. Antilles**

Jonka Enterprises N.V.  
Sta. Rosa Weg 196  
P.O. Box 8200  
Curaçao

**New Zealand**

NYLEX New Zealand Limited  
Private Bag 94001  
South Auckland Mail Centre  
10 Offenhauser Drive  
East Tamaki, Manukau

**Norway**

GARDENA Norge A/S  
Postboks 214  
2013 Skjetten

**Poland**

GARDENA Polska Sp. z o.o.  
Szymanów 9 d  
05-532 Baniocza

**Portugal**

MARKT (Portugal), Lda.  
Recta da Granja do Marquês  
Edif. GARDENA  
Algueirão  
2725-596 Mem Martins

**Russia / Россия**

АО АМИДА ТТЦ  
ул. Мосфильмовская 66  
117330 Москва

**Singapore**

Variware  
Holland Road Shopping Centre  
227-A 1st Fl., Unit 29  
Holland Avenue  
Singapore 1027

**Slovenia / Croatia**

Silk d.o.o. Trgovina  
Brodišče 15  
1236 Trzin

**South Africa**

GARDENA South Africa (Pty.) Ltd.  
P.O. Box 11534  
Vorna Valley 1686

**Spain**

ANMI Andreu y Miriam S.A.  
Calle Pere IV, 111  
08018 Barcelona

**Sweden**

GARDENA Svenska AB  
Box 9003  
20039 Malmö

**Switzerland**

GARDENA Kress + Kastner AG  
Bitziberg 1  
8184 Vachenbülach

**Ukraine / Украина**

АОЗТ АЛЬЦЕСТ  
ул. Гайдара 50  
г. Киев 01033

**Turkey**

Dost Diş Ticaret Müessesilik A.Ş.  
Yeşilbağlar Mah. Başkent  
Cad. No. 26  
Pendik - İstanbul

**USA**

GARDENA  
3085 Shawnee Drive  
Winchester, VA 22604

7919-20.960.08/0021

© GARDENA Kress + Kastner GmbH  
Postfach 27 47, D-89070 Ulm  
<http://www.gardena.com>