



V12Z Commercial Collection System

Operator's Manual



Models: V12ZA

Please read these instructions carefully and make sure you understand them before using the machine.

Index

Operators Guide

Specifications	3
Features and Controls	4
General Information	5
Safety Procedures	5
Unpacking Instructions	7
Assembly Instructions	7
Frame Assembly	7
Mounting the V12Z	8
Engine Mount and Vacuum Assembly	9
Hose Attachment	10
Hose Trimming	11
Door Tightness Adjustment	11
Servicing the Engine	12
Pre-Start Check	12
Starting the Engine	12
Operating the Vacuum	12

Maintenance and Service Instructions

Transport	13
Cleaning and Washing	13
Storage	13
Preventative Maintenance Schedule	13
Engine Service and Maintenance	14
Caring for Vacuum Hoses	14
Cleaning Exhaust Screen	14
Trouble Shooting Guide	15

Replacement Parts

Unit Assembly	16
Replacement Parts List	17

WARNING: Engine exhaust, some of its constituents, and certain vehicle components contain or emit chemicals known to the State of California to cause cancer and birth defects or other reproductive harm.

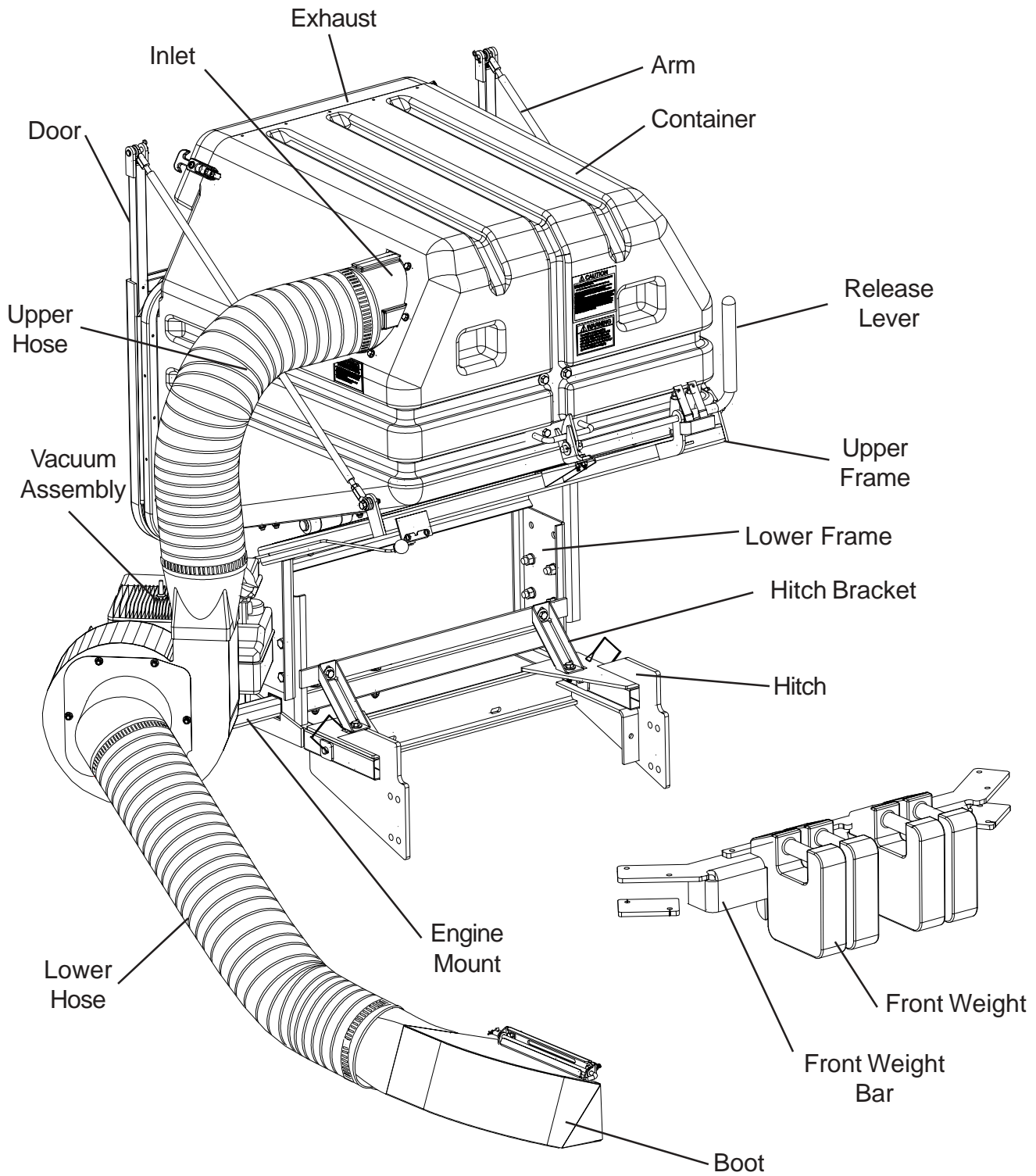
Operator's Guide

Specifications

Height	47 - 50 in. (119 - 127 cm.)
Length	38 in. (97 cm.)
Width (without engine mount or vacuum assembly)	37 in. (94 cm.)
Width (with engine mount and vacuum assembly)	54 in. (137 cm.)
Engine Options	5.5 hp Briggs & Stratton 5.5 hp Honda 6 hp Kohler 8 hp Briggs & Stratton
Weight (without vacuum assembly)	190 lb. (84 kg.)
Weight (with vacuum assembly)	260 lb. (116 kg.)
Total Capacity	14 cu ft (11.7 bu. or 0.41 m ³)
Usable Capacity	10 cu ft (8.4 bu. or 0.29 m ³)
Hose	7 in. (18 cm.) upper and lower

Operator's Guide

Features and Controls



NOTE: Your Front Weight Bar, Boot, and Hitch may look different from those shown in this diagram.

Operator's Guide

General Information

This manual will assist you in the safe operation and proper maintenance of your BlueBird equipment. Read it thoroughly before attempting to operate the machine. Call your dealer or BlueBird Customer Service if additional information is required.

The following safety symbols are used throughout the manual to alert you to information about unsafe actions or situations:

DANGER indicates immediate hazards that may result in severe injury or death.

WARNING indicates unsafe actions or situations that may cause severe injury, death, and/or major equipment or property damage.

CAUTION indicates unsafe actions or situations that may cause injury and/or minor equipment or property damage.

This equipment should not be modified without the manufacturer's prior written authorization. Doing so may not only affect the equipments' performance and durability, but also create safety hazards for the operator and the surroundings. Warranty will be void if changes are made to the equipment without the manufacturer's prior written authorization.

Safety Procedures

1 - Training:

- Read the Operator's manual. If the operator(s) or mechanic(s) can not read English it is the owner's responsibility to explain this material to them.
- Become familiar with the safe operation of the equipment, operator's controls, and safety signs.
- All operators and mechanics should be trained. The owner is responsible for training the users.
- Never let children or untrained people operate or service the equipment. Local regulations may restrict the age of the operator.
- The owner/user can prevent and is responsible for accidents or injuries occurring to themselves, other people, and/or property.

2 - Preparation:

- Wear appropriate clothing including hard hat, safety glasses and ear protection. Long hair, loose clothing or jewelry may get tangled in moving parts.
- Inspect the area where the equipment is to be used and remove all objects such as rocks, toys and wire which can be thrown by the machine.
- Use extra care when handling gasoline and other fuels. They are flammable and vapors are explosive. Use only an approved container. Never remove gas cap or add fuel with engine running. Allow engine to cool before refueling. Do not smoke while fueling or operating equipment. Never refuel or drain the machine indoors.
- Check that operator's controls, safety switches, hoses, and shields are securely attached and functioning properly. Do not operate unless they are functioning properly.

Operator's Guide

3 - Operation

- Never run an engine in an enclosed area.
- Only operate in good light, keeping away from holes and hidden hazards.
- Slow down and use extra care on hillsides. Make turns gradually and at slow speed. Do not operate across the sides of slopes. Operate up and down slopes only. Do not operate on steep slopes.
- Turf conditions can affect the machine's stability. Do not operate on wet grass where traction may be reduced.
- Do not change the engine governor setting or overspeed the engine.
- Stop equipment and inspect vacuum impeller and hoses after striking objects or if an abnormal vibration occurs. Make necessary repairs before resuming operations.
- Look behind and down before backing up to ensure a clear path.
- Slow down and use caution when making turns and crossing roads and sidewalks. Stop vacuum and mower blades if not mowing.
- Do not operate machine under the influence of alcohol or drugs.
- Use care when loading or unloading the machine into a trailer or truck.
- Use care when approaching blind corners, shrubs, trees, or other objects that may obscure vision.

4 - Maintenance and Storage:

- Stop engine and disconnect spark plug wire. Wait for all movement to stop before adjusting, cleaning, or repairing.
- Clean grass and debris from muffler and engine to help prevent fires. Clean up oil or fuel spillage.
- Let engine cool before storing and do not store near flame.
- Shut off fuel while storing. Do not store fuel near flames or drain indoors.
- Never allow untrained personnel to service machine.
- Keep hands and feet away from moving parts. If possible, do not make adjustments with the engine running.
- Keep all parts in good working condition and all hardware tightened. Replace all worn or damaged decals.

Operator's Guide

Unpacking Instructions

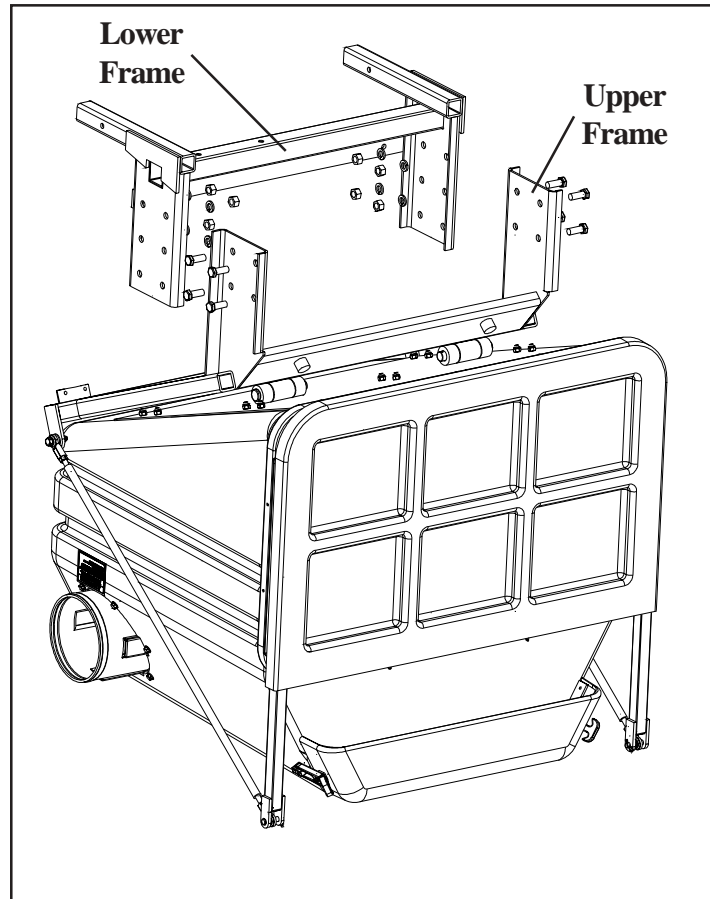
1. Cut straps around carton and remove top.
2. Wear eye protection. Remove wood pieces. NOTE: Watch for nails and wood splinters.
3. Slide carton sleeve out of bottom tray and lift over V12Z.

Assembly Instructions

1. Frame Assembly

Tools Required:

1. 3/4" wrench
2. Ratchet
3. 3/4" socket



1. Position the Lower Frame inside the Upper Frame.
2. Align holes corresponding to desired position of frame.
3. Secure with eight (8) 1/2" x 1-1/4" hex bolts and eight (8) 1/2" nylon lock nuts.

Operator's Guide

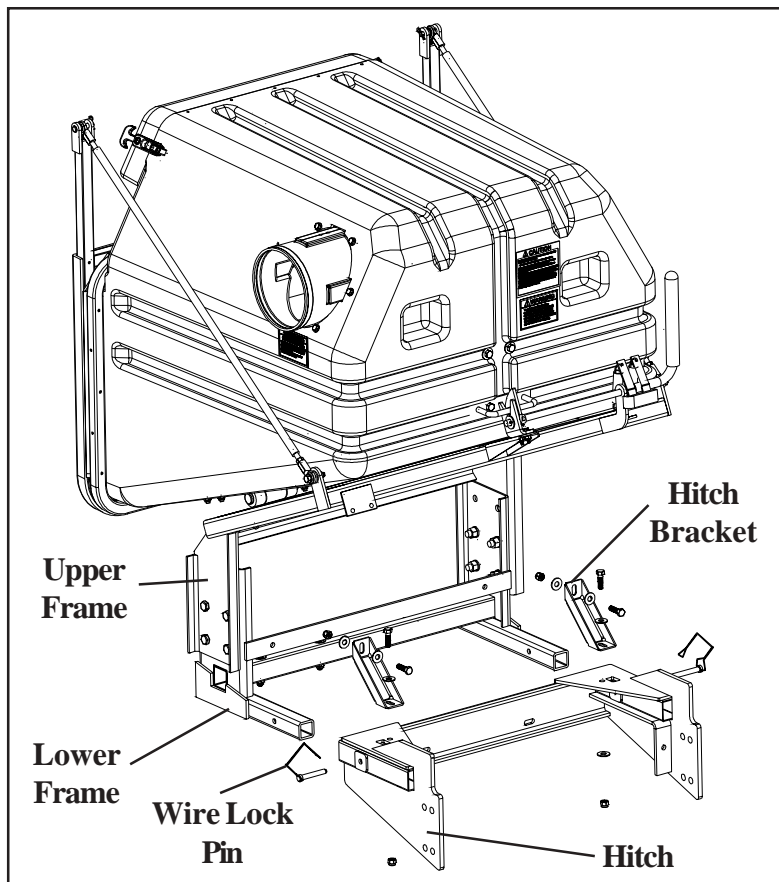
Assembly Instructions (continued)

2. Mounting the V12Z

NOTE: This portion of the assembly requires lifting the V12Z; two people are required.

Tools Required:

1. 9/16" wrench
2. Ratchet
3. 9/16" socket



1. Install the Hitch from the Custom Kit according to the instruction sheet included in that carton.
2. Slide the V12Z into the hitch.
3. Line up holes in the Hitch and V12Z and secure with two (2) 3/8" wire lock pins.
4. Position the Hitch Brackets so that they are aligned with the holes on the top plate of the Hitch and the holes in the forward cross bar of the Lower Frame.
5. Secure with four (4) 3/8" x 1-1/4" hex bolts, four (4) 3/8" nylon lock nuts, and eight (8) 3/8" flat washers.

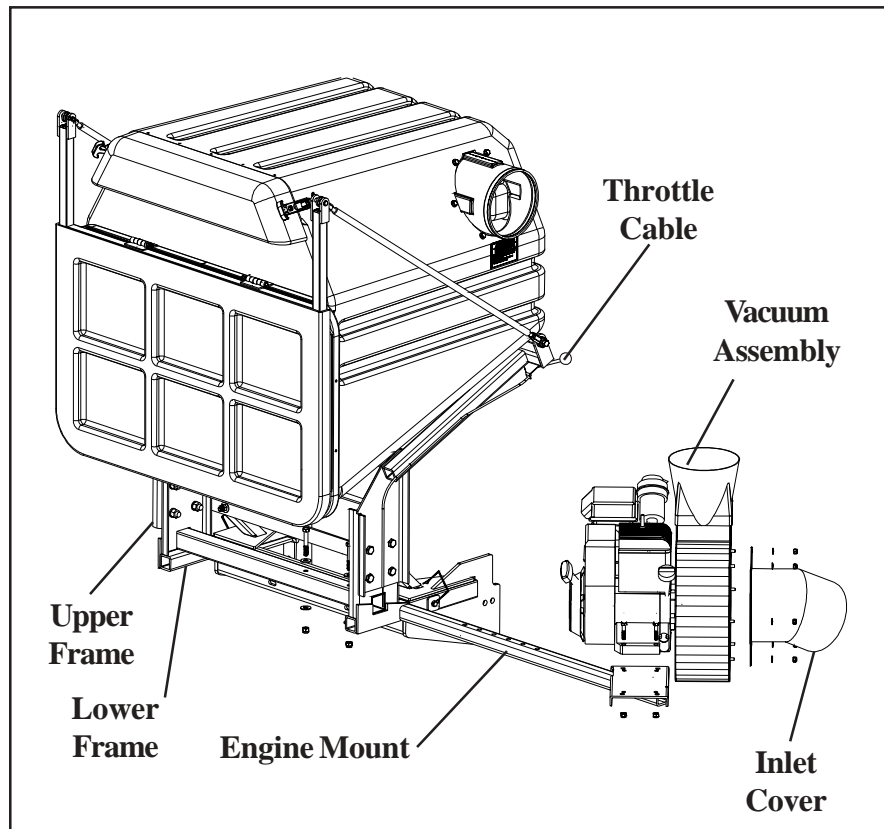
Operator's Guide

Assembly Instructions (continued)

3. Engine Mount and Vacuum Assembly

Tools Required:

1. 9/16" wrench
2. Ratchet
3. 9/16" socket.
4. 7/16" socket
5. 3/8" wrench
6. Flat Screwdriver



1. Slide the Engine Mount into the Lower Frame as shown.
2. Secure the Vacuum Assembly to the Engine Mount using the hardware provided with the Vacuum.
3. Slide the Engine Mount into the Lower Frame so that the Vacuum Assembly is as close to the Frame as possible.
4. Adjust the Engine Mount to the nearest aligning holes between the Lower Frame and the Engine Mount.
5. Secure the Engine Mount to the Lower Frame with two (2) 3/8" x 2-1/2" hex bolts, two (2) 3/8" hex nuts, and four (4) 3/8" flat washers.
6. Place the Inlet Cover on the Vacuum Assembly with the inlet cylinder pointing downward and forward toward the mower deck.
7. Secure the Inlet Cover with the hardware provided with the Vacuum.
8. Attach the Throttle Cable to the Upper Frame using two (2) #10 x 3/4" slotted round head screws, two (2) #10 flat washers, and two (2) #10 nylon lock nuts.
9. Attach the Throttle Cable to the throttle control of the engine on the Vacuum Assembly.

Operator's Guide

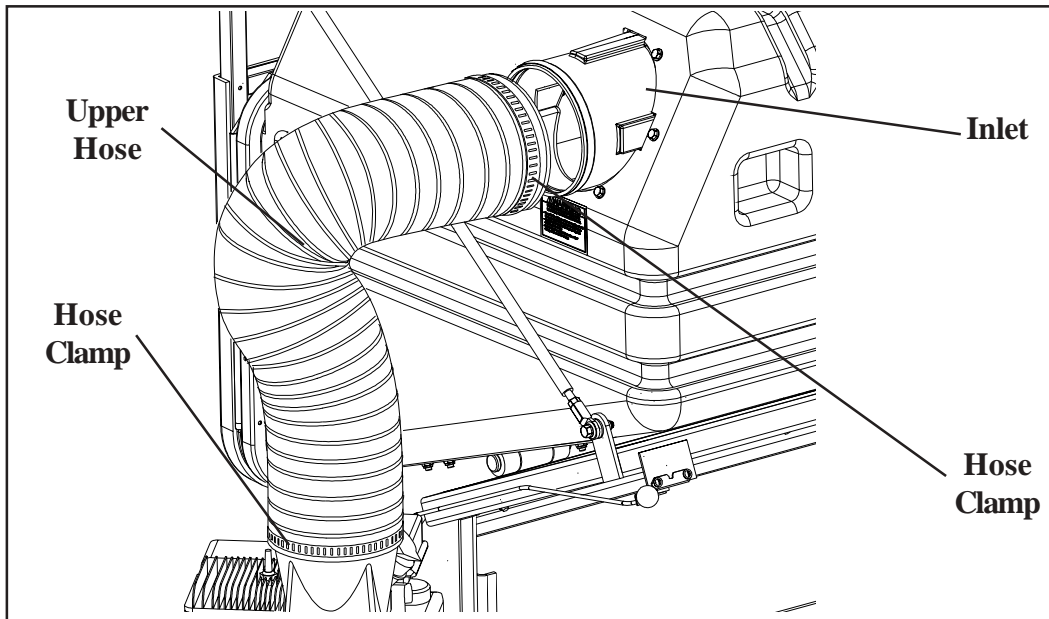
Assembly Instructions (continued)

4. Hose Attachment

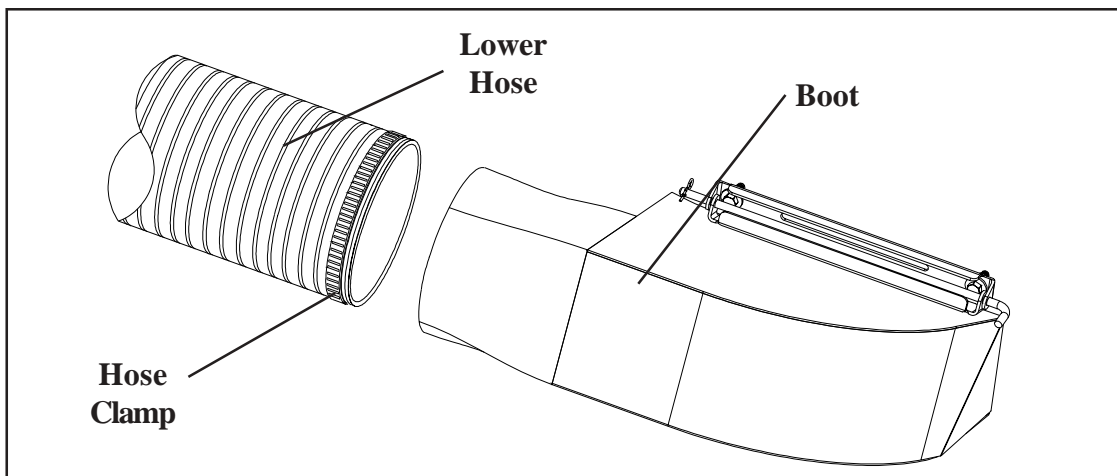
NOTE: Hoses may need to be trimmed to fit. If necessary, see the Hose Trimming section at the end of the Assembly Instructions.

Tools Required: Flat screwdriver

1. Slide one Hose Clamp over each end of the Upper Hose. Slide one end of the hose over the Vacuum discharge opening and the other end over the Inlet. Tighten the Hose Clamps to secure hose in place.



2. Slide one Hose Clamp over each end of the Lower Hose. Slide one end of the hose over the Vacuum Inlet Cover. Slide the other end over the Boot discharge opening. Tighten the Hose Clamps to secure hose in place.



Operator's Guide

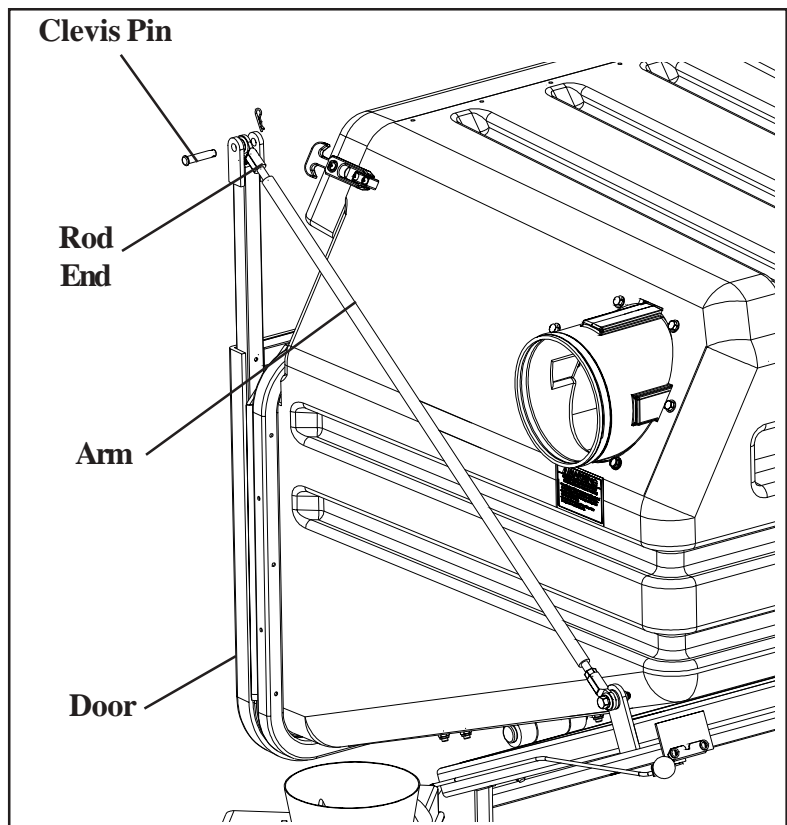
Assembly Instructions (continued)

5. Hose Trimming

Tools Required: Utility Knife

1. Carefully measure the length needed. Remember that although the hose is flexible, it will not stretch.
2. Measure the same length on the hose that needs to be trimmed, and with the utility knife, cut through the webbing at the proper location.
3. Continue that cut through the webbing all the way around the hose so that it finishes just across the support coil from where the original cut was started.
4. Use the utility knife to score the support coil between the beginning and end of the web cut. Set aside the knife, and finish breaking the coil by hand by working the scored portion back and forth until it breaks apart.

6. Door Tightness Adjustment



Tools Required: 1. 9/16" Wrench
2. Ratchet
3. 9/16" Socket
4. Clamps

1. Remove arms from door by removing the 3/8" x 1-3/4" clevis pins.
2. Clamp door tightly shut.
3. Adjust arm length so that rod ends on arms can be fastened to the door.
4. Fasten arms to door.
5. If door is still too tight or too loose, repeat steps 1-4 and adjust the clamp tightness until door is at desired tightness.

Operators Guide

Servicing the Engine

1. Make sure that engine oil is at engine manufacturer's recommended level (refer to engine manual).
2. Fill the fuel tank. Use fresh, clean, unleaded automotive gasoline.

Pre-Start Check

1. Make sure the stop switch is in the OFF position and spark plug wire is disconnected. Pull the starter rope slowly to make certain there are no foreign objects in the blower housing.
2. Be sure the spark plug wire and cover are attached to the spark plug.

Starting the Engine

1. Turn the stop switch to the ON position.
2. Move the choke lever to the FULL CHOKE position.
3. Move the throttle lever to the FULL THROTTLE position.
4. Grasp the starter handle firmly. Pull the handle with a rapid continuous motion.
5. When the engine starts, move the choke to 1/2 choke and then to NO CHOKE position

Operating the Vacuum

1. **NEVER USE THE V12Z WITHOUT THE VACUUM INLET COVER AND ALL HOSES SECURELY ATTACHED.**
2. Make sure both hoses are connected at both ends. Inspect hoses prior to each use.
3. Do not use the V12Z on slopes greater than 15 degrees.
4. The mower must be running in order to vacuum debris through the mower deck.
5. In heavy grass it may be necessary to mow and vacuum at a slower ground speed.
6. Never attempt to unclog the V12Z until both the mower's engine and vacuum's engine have been shut off and all moving parts have come to a complete stop.
7. Do not stand behind the vent at the rear of the V12Z due to the potential for small pieces of blowing debris to escape through this vent.
8. Wear eye and ear protection.
9. **TO STOP THE ENGINE:** throttle down to slow for a few seconds, then push switch to OFF. Remove any hearing protection and listen for all moving parts to come to a complete stop. The flywheel in the power head will coast for a few seconds after the engine is shut off before actually stopping.

Maintenance and Service Instructions

Transport

WARNING! The V12Z container must be completely empty while driving forward onto a trailer. If the V12Z must be loaded onto a trailer while there is still debris in the container, the mower must be backed up onto the trailer to avoid tipping.

Cleaning and Washing

Regular cleaning, washing, and lubricating will prolong the service of the machine.

NOTE: Use care with power washers to avoid damage to decals. Limit direct spray on these items.

DO NOT EXCEED 1000 PSI WATER PRESSURE FOR CLEANING.

For best results, clean exhaust screen inside container regularly. Instructions for doing this can be found in the Service section of this manual.

Storage

1. Refer to engine manufacturer's instructions for engine storage information.
2. Clean machine.
3. Cover all scratches with touch-up paint.
4. Covered or indoor storage is recommended.

Preventative Maintenance Schedule

Item	Before Each Use	Every 5 Hours	Every 25 Hours	Every 50 Hours
Check Engine Oil Level	X	X		
Change Engine Oil			X	
Change Air Cleaner Element			X	
Replace Spark Plug				X
Inspect/Clean Exhaust Screen	X	X		
Check/Tighten Nuts & Bolts	X			
Check/Tighten Hoses	X			
Turn Hose End to End			X	
Rotate Hose				X
Clean Machine				X

Maintenance and Service Instructions

Engine Service and Maintenance

Follow the engine manufacturer's maintenance instructions. Should any malfunction occur with the engine during the warranty period, take it to an Authorized Service Dealer. DO NOT tear down the engine, as this may void the Engine Manufacturer's Warranty.

NOTE: Refer to engine manufacturer's owner's manual for all engine service information.

Caring For Vacuum Hoses

1. Inspect hoses before each use. If hoses have excessive wear, tears, or punctures, replace immediately.
2. To prolong the life of the hose, periodically rotate hose and turn hose end to end. Refer to Preventative Maintenance Schedule in this manual.
3. Avoid twists and sharp turns in the hoses, as they will increase wear on the hoses.
4. Avoid dragging the lower hose along the sides of buildings or other hard surfaces.

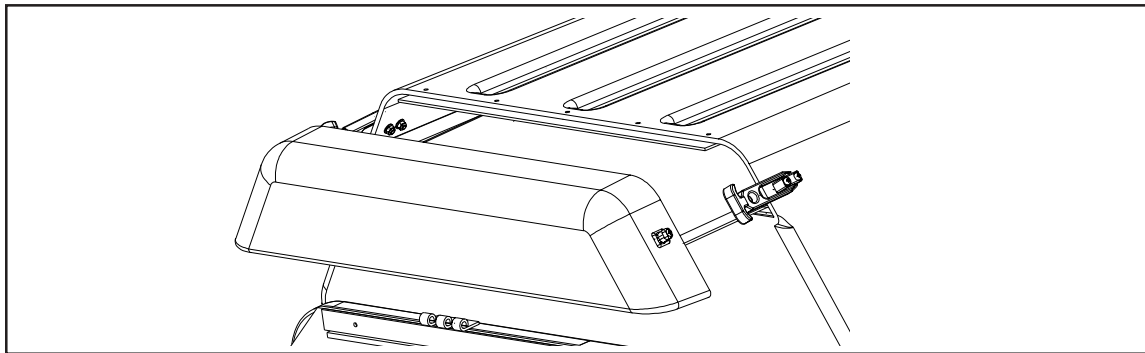
Cleaning Exhaust Screen

The exhaust screen on the V12Z is located inside the container. For best results, clean exhaust screen regularly.

Cleaning Instructions

1. Shut off all engines.
2. Release the two (2) rubber latches on the sides of the filter cover, and slide screen out.
3. Clean the screen, and replace.

DO NOT USE THE V12Z WITHOUT EXHAUST SCREEN SECURELY IN PLACE.



Maintenance and Service Instructions

Trouble Shooting Guide

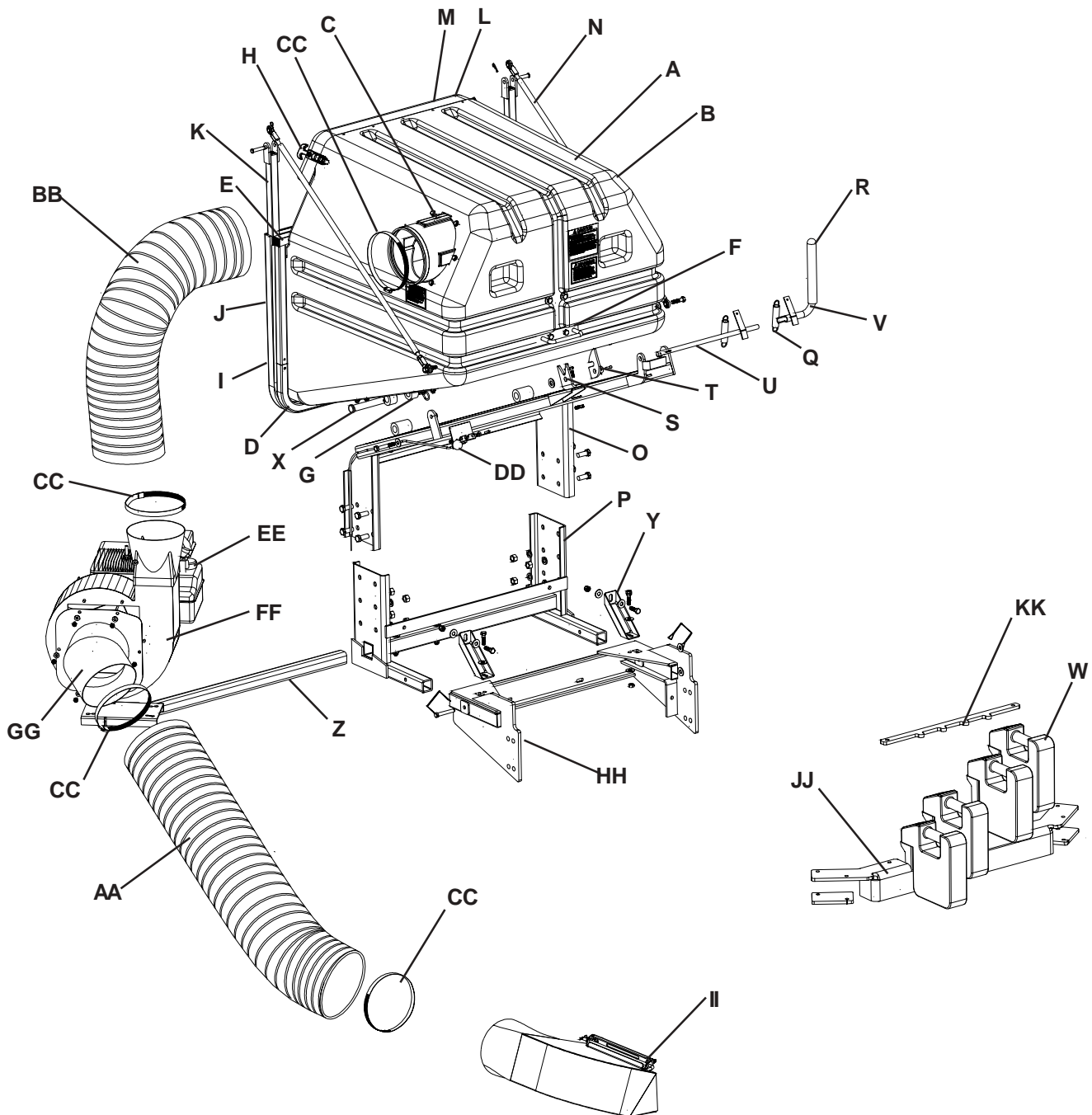
! DANGER !

Before servicing unit wait for all moving parts to come to a complete stop. Turn engine off and remove the spark plug wire.

PROBLEM	POSSIBLE CAUSE	CORRECTION
Engine Does Not Start.	<ol style="list-style-type: none"> 1. Spark plug wire disconnected. 2. Engine ON/OFF switch in OFF position. 3. Fuel tank empty. 4. Stale gasoline. 5. Dirty air filter. 	<ol style="list-style-type: none"> 1. Reconnect wire. 2. Put switch in ON position. 3. Add gasoline. 4. Drain gasoline and add fresh gasoline. 5. Clean or replace.
Engine Runs Poorly.	<ol style="list-style-type: none"> 1. Bad spark plug. 2. Dirty air filter. 3. Incorrect choke setting. 4. Stale gasoline. 5. Dirt or water in fuel tank. 	<ol style="list-style-type: none"> 1. Inspect spark plug. 2. Clean or replace. 3. Put choke in correct setting. 4. Drain gasoline and add fresh gasoline. 5. See engine service dealer.
Engine Overheats.	<ol style="list-style-type: none"> 1. Carburetor out of adjustment. 2. Oil level is low. 	<ol style="list-style-type: none"> 1. See engine service dealer. 2. Check and add oil.
Loss of Vacuum.	<ol style="list-style-type: none"> 1. Vacuum inlet clogged. 2. Container full. 3. Engine not reaching full RPM. 4. Fan blades bent or broken. 	<ol style="list-style-type: none"> 1. Remove hose and clean inlet. 2. Inspect and empty. 3. See "Engine Runs Poorly" above. 4. Replace/repair impeller.
Unusual vibration or noise.	<ol style="list-style-type: none"> 1. Solid object jammed in unit. 2. Engine cylinder shaft or crankshaft bent or damaged. 3. Loose engine mounting bolts/nuts. 4. Loose or missing bolts on unit. 5. Engine shaft bearings damaged. 	<ol style="list-style-type: none"> 1. Check and remove any obstruction. 2. See engine service dealer. 3. Tighten bolts/nuts. 4. Tighten or replace bolts. 5. See engine service dealer.
Unit difficult to close.	<ol style="list-style-type: none"> 1. Door too tight. 2. Obstructions keeping door from completely closing. 	<ol style="list-style-type: none"> 1. Adjust arm tightness 2. Clear obstructions.
Door doesn't shut tightly.	<ol style="list-style-type: none"> 1. Door tightness not adjusted correctly. 	<ol style="list-style-type: none"> 1. Adjust arm tightness

Replacement Parts

Unit Assembly



NOTE: Your Front Weight Bar, Boot, and Hitch may look different from those shown in this diagram.

Replacement Parts

Description	Part No.	Guide	Qty.
Carton #1 Assembly, V12Z	V12ZA	*	1
Container Assembly, including:	200755	A	1
Container, Plastic	200403	B	1
Inlet, Plastic	200408	C	1
Frame, Container	200789	D	1
Frame Top, Container	200507	E	1
Rail	200685	*	2
Latch Bar	200695	F	1
Exhaust Support Plate	200686	*	1
Latch Bar Support Plate	200688	*	1
Pivot Support Plate	200687	*	2
Pivot Plate	200508	G	1
Deflector	200406	*	1
Draw Latch, Short	200478	H	2
Tube Connector, 1" sq., 1/4"-20	200790	*	2
Bolt, Carriage, 5/16"-18 x 1"	200696	*	12
Nut, Hex, Nylon Lock, 5/16"-18	ER99079	*	12
Bolt, Hex, 1/4"-20 x 1"	ER99008	*	6
Nut, Hex, Nylon Lock, 1/4"-20	ER99072	*	6
Washer, Flat, 1/4"	0405	*	12
Bolt, Hex, 3/8"-16 x 1"	0168	*	4
Nut, Hex, Nylon Lock, 3/8"-16	ER99065	*	4
Washer, Flat, 3/8"	0417	*	2
Screw, Phillips Pan Head, #10-24 x 1-1/4"	200641	*	6
Nut, Hex, Nylon Lock, #10-24	02004	*	6
Washer, Flat, #10	0403	*	6
Plug	200690	*	2
Trim Seal, 5/16" Edge	200506	*	6.6 ft
Seal, Rubber Sponge, 9/16"	200766	*	3 ft
Door Assembly, including:	200785	I	1
Door, Plastic	200410	J	1
Door Frame	200706	K	1
Plug	200690	*	2
Seal, Rubber Sponge	200766	*	3 ft
Exhaust Assembly, including:	200808	L	1
Exhaust, Plastic	200413	M	1
Screen	200698	*	1
Arm Assembly, including:	200420	N	2
Arm	200520	*	2
Rod Ends	30425	*	4
Nut, Hex, 3/8"-24	0224	*	2
Upper Frame	200510	O	1
Lower Frame	62072	P	1
Spring	10195	Q	2
Grip, Latch Release Lever	61481	R	1
Rubber Bumper	30460	*	2
Latch Base	200423	S	1
Latch Catch	200708	T	1
Latch Rod	200710	U	1
Latch Release Lever	200712	V	1
Front Weight	ER92531	W	3
Washer, Flat, 1/4"	0405	*	2
Nut, Hex, Nylon Lock, 1/4"-20	0203	*	2
Bolt, Hex, 1/4"-20 x 1"	ER99008	*	2
Washer, Flat, 3/8"	0415	*	2

Replacement Parts

Pin, Clevis, 3/16" x 1"	0382	*	1
Pin, Cotter, 3/32" x 3/4"	03585	*	2
Bolt, Hex, 3/8"-16 x 1-1/4"	ER99020	*	2
Nut, Nylon Lock, Thin, 3/8"-16	200282	*	2
Washer, Flat, 1/2"	0425	*	1
Nut, Hex, Nylon Lock, 5/16"-18	ER99079	*	2
Pin, Clevis, 1/4" x 2-3/4"	200691	*	2
Pin, Clevis, 3/8" x 1-3/4"	200692	*	2
Pin, Hairpin Cotter, #13	ER99082	*	4
Pin, Clevis, 3/4" x 4-1/2"	200642	X	2
Pin, Hairpin Cotter, #210	200715	*	2
Bolt, Hex, 1/2"-13 x 1-1/4"	0192	*	2
Nut, Hex, Nylon Lock, 1/2"-13	ER93082	*	2
Small Parts Kit, including:	200756	*	1
Manual	200771	*	1
Pin, Wire Lock	ER99693	*	2
Ear Plugs	ER93961	*	1
Hardware Kit, including:	200770	*	1
Washer, Flat, 3/8"	0415	*	8
Bolt, Hex, 3/8"-16 x 1-1/4"	ER99020	*	4
Nut, Hex, Nylon Lock, 3/8"-16	ER99065	*	4
Nut, Hex, Nylon Lock, 1/2"-13	ER93082	*	6
Bolt, Hex, 1/2"-13 x 1-1/4"	ER99069	*	6
Bolt, Hex, 3/8"-16 x 2-1/2"	ER99611	*	2
Hitch Bracket	61532	Y	2
Carton #2 5.5 hp Briggs & Stratton Vacuum Assembly	030167	*	1
Engine, 5.5 hp Briggs & Stratton Intek	51954	EE	1
Blower Housing	ER94004	FF	1
Impeller	ER94005	*	1
Hardware Kit, including:	ER94251	*	1
Bolt, Hex, 5/16"-18 x 1-1/2"	ER99015	*	4
Nut, Hex, Nylon Lock, 5/16"-18	ER99079	*	4
Nut, Hex, Nylon Lock, 1/4"-20	ER99072	*	6
Washer, Flat, 1/4"	ER99074	*	6
Inlet, Blower Housing	ER92705	GG	1
Decal, Caution List	540200027	*	1
Decal, Hot Surfaces	ER94082	*	1
Bolt, Hex, 5/16"-24 x 3/4"	ER99012	*	5
Washer, Spring, 5/16"	ER99001	*	5
Set Screw, 3/8"-24 x 3/8"	ER99027	*	2
Key, Square, 3/16" x 3/16" x 1-3/4"	ER99002	*	1
Carton #2 5.5 hp Honda Vacuum Assembly	030168	*	1
Engine, 5.5 hp Honda	5194	EE	1
Blower Housing	ER94004	FF	1
Impeller	ER94005	*	1
Hardware Kit, including:	ER94251	*	1
Bolt, Hex, 5/16"-18 x 1-1/2"	ER99015	*	4
Nut, Hex, Nylon Lock, 5/16"-18	ER99079	*	4
Nut, Hex, Nylon Lock, 1/4"-20	ER99072	*	6
Washer, Flat, 1/4"	ER99074	*	6
Inlet, Blower Housing	ER92705	GG	1
Decal, Caution List	540200027	*	1
Decal, Hot Surfaces	ER94082	*	1
Bolt, Hex, 5/16"-24 x 1"	ER99016	*	5

Replacement Parts

	Washer, Spring, 5/16"	ER99001	*	4
	Set Screw, 3/8"-24 x 3/8"	ER99027	*	2
	Key, Square, 3/16" x 3/16" x 1"	ER99108	*	1
	Spacer, Steel, 0.75" OD x 0.510 ID	ER99603	*	5
	Deflector, Exhaust, Honda	51925	*	1
Carton #2	6 hp Kohler Vacuum Assembly	030166	*	1
	Engine, 6 hp Kohler	ER54136	EE	1
	Blower Housing	ER94004	FF	1
	Impeller	ER94005	*	1
	Hardware Kit, including:	ER94251	*	1
	Bolt, Hex, 5/16"-18 x 1-1/2"	ER99015	*	4
	Nut, Hex, Nylon Lock, 5/16"-18	ER99079	*	4
	Nut, Hex, Nylon Lock, 1/4"-20	ER99072	*	6
	Washer, Flat, 1/4"	ER99074	*	6
	Inlet, Blower Housing	ER92705	GG	1
	Decal, Caution List	540200027	*	1
	Decal, Hot Surfaces	ER94082	*	1
	Bolt, Hex, 5/16"-24 x 3/4"	ER99012	*	5
	Washer, Spring, 5/16"	ER99001	*	5
	Set Screw, 3/8"-24 x 3/8"	ER99027	*	2
	Key, Square, 3/16" x 3/16" x 1-3/4"	ER99002	*	1
	Deflector, Exhaust, Kohler	ER97055	*	1
	Screw, Muffler Deflector	ER97081	*	2
Carton #2	8 hp Briggs & Stratton Vacuum Assembly	030187	*	1
	Engine, 8 hp Briggs & Stratton	ER57005	EE	1
	Blower Housing	ER97014	FF	1
	Impeller	ER92530	*	1
	Spacer, 0.750" OD x 0.510" ID x 5/8"	ER99606	*	4
	Hardware Kit, including:	ER94253	*	1
	Bolt, Hex, 5/16"-18 x 2"	ER99017	*	4
	Nut, Nylon Lock, 5/16"-18	ER99079	*	4
	Washer, Flat, 5/16"	0413	*	8
	Nut, Nylon Lock, 1/4"-20	ER99072	*	8
	Washer, Flat, 1/4"	ER99074	*	8
	Inlet, Blower Housing	ER92533	GG	1
	Decal, Hot Surfaces	ER94082	*	1
	Decal, Caution List	540200027	*	1
	Bolt, Hex, 3/8"-16 x 1-1/2"	ER99021	*	4
	Key, Square, 1/4" x 1/4" x 2-1/2"	ER99044	*	1
	Set Screw, 3/8"-24 x 3/8"	ER99027	*	1
	Washer, 0.1875" x 0.510" x 1.50"	ER99617	*	1
	Bolt, Hex, 7/16"-20 x 1-1/2"	01803	*	1
	Washer, Split Lock, 1/2"	ER99037	*	1
	Washer, Split Lock, 3/8"	0450	*	1
	Debris Screen, Briggs & Stratton P/N 397530	ER97084	*	1
	Foam Hat, Briggs & Stratton P/N 271735	ER97085	*	1

Replacement Parts

Carton #3	Accessories, Auxiliary Engine	200817	*	1
	Engine Mount	62092	Z	1
	Hose, 7" x 54"	ER97154	AA	1
	Hose, 7" x 36"	ER97136	BB	1
	Front Weight	ER92531	W	1
	Small Parts Kit, including:	200717	*	1
	Hose Clamp	ER97076	CC	4
	Bolt, Hex, 3/8"-16 x 2-1/2"	ER99611	*	2
	Washer, Flat, 3/8"	0415	*	4
	Nut, Hex, Nylon Lock, 3/8"-16	ER99065	*	2
	Nut, Hex, Nylon Lock, #10-24	02004	*	2
	Washer, Flat, #10	0403	*	2
	Screw, Slotted Rd Hd, #10-24 x 3/4"	01062	*	2
	Throttle Cable	61651	DD	1
Carton #4	Custom Kit		*	1
	Hitch		HH	1
	Boot		II	1
	Front Weight Bar		JJ	1
	Front Weight Holddown Bar		KK	1

NOTE: Your Front Weight Bar, Boot, and Hitch may look different from those shown in Unit Assembly Diagram.

* Not shown in assembly diagram



BlueBird International, Inc.
700 Park Street
Beatrice, NE 68310
PHONE (402) 223-2391
TOLL FREE PHONE (800) 808-BIRD
FAX (303) 288-5899
TOLL FREE FAX (800) 254-BIRD
WEBSITE www.bluebirdintl.com
EMAIL actioncenter@bluebirdintl.com

Technical Assistance:
For technical assistance, please contact your local dealer
or BlueBird Customer Service.