



# **REPAIR PARTS MANUAL**

## **MODEL NO. 13-96 (MBA13T96B)**

### **Lawn Tractor**

---

# **Mr. Bricolage**

# HOW TO USE THIS MANUAL

This manual is designed to provide the customer with a means to identify the parts on his/her tractor when ordering repair parts. The illustrations may or may not represent the actual assemblies; therefore, it is not recommended to use this manual as a guide to assemble or disassemble the tractor. Some hardware and parts are drawn larger in order to more readily identify them.

Each tractor has its own model number.

The model number for your tractor can be found on the fender under the seat.

When ordering parts, always give the following information:

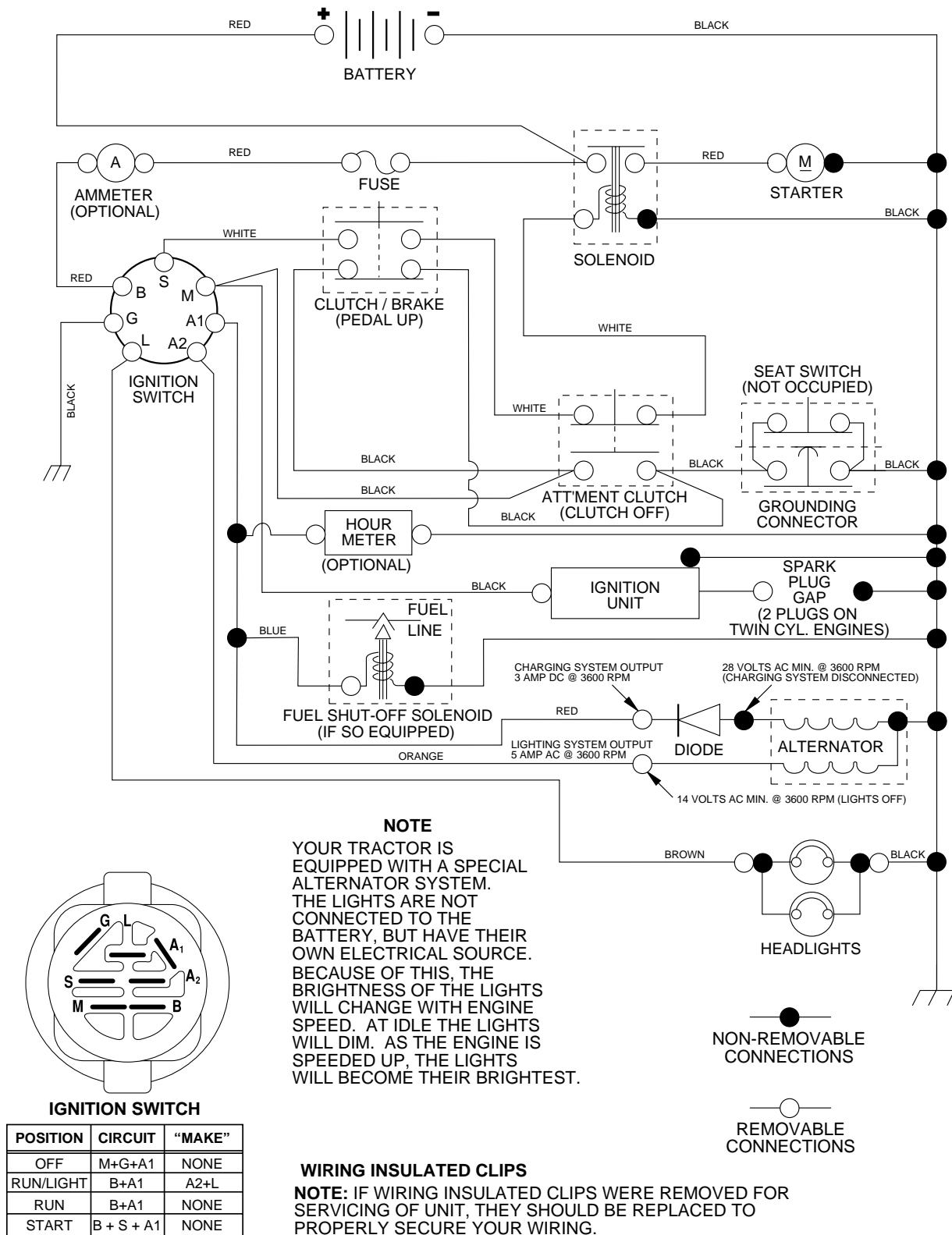
- Product - “Lawn Tractor”
- Model Number - “13-96” (MBA13T96B)
- Part Number
- Part Description

## TABLE OF CONTENTS

|                              |       |
|------------------------------|-------|
| SCHEMATIC.....               | 3     |
| ELECTRICAL.....              | 4-5   |
| CHASSIS AND ENCLOSURES ..... | 6-7   |
| DRIVE .....                  | 8-9   |
| SEAT .....                   | 10    |
| DECALS .....                 | 11    |
| STEERING WHEEL .....         | 12-13 |
| ENGINE .....                 | 14-15 |
| MOWER LIFT .....             | 16-17 |
| MOWER DECK .....             | 18-19 |

# TRACTOR - - MODEL NUMBER 13-96 (MBA13T96B)

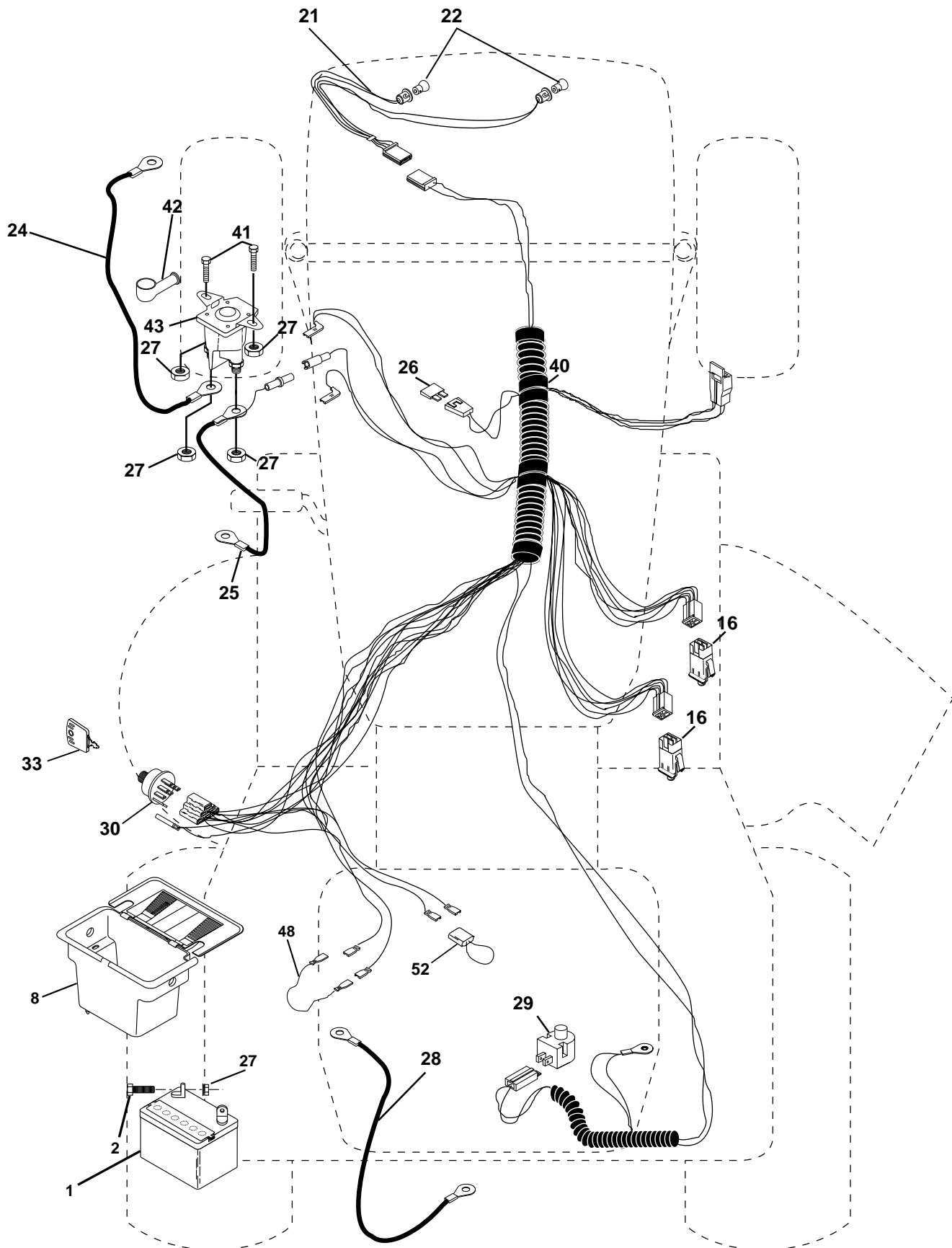
## SCHEMATIC



## REPAIR PARTS

**TRACTOR - - MODEL NUMBER 13-96 (MBA13T96B)**

## ELECTRICAL



# REPAIR PARTS

## TRACTOR - - MODEL NUMBER 13-96 (MBA13T96B)

### ELECTRICAL

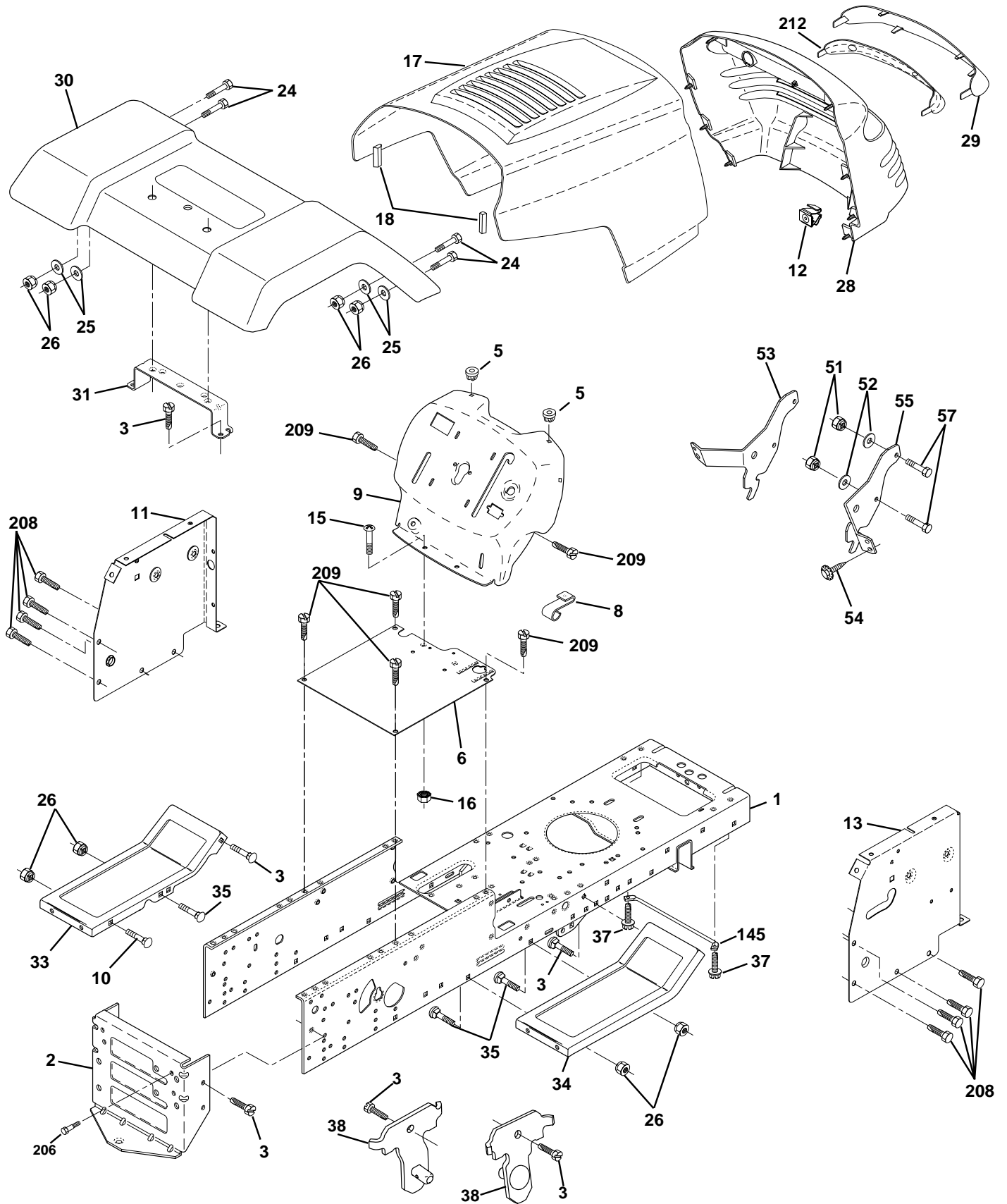
| KEY<br>NO. | PART<br>NO. | DESCRIPTION                     |
|------------|-------------|---------------------------------|
| 1          | 144925      | Battery 12 Volt 25 AMP          |
| 2          | 74760412    | Bolt Hex Hd 1/4-20unc X 3/4     |
| 8          | 156417      | Case Battery                    |
| 16         | 153664      | Switch Interlock Push-In        |
| 21         | 166181      | Harness Asm Light W/4152j       |
| 22         | 4152J       | Bulb Light #1156                |
| 24         | 108423X     | Cable Battery                   |
| 25         | 146147      | Cable Battery 6 Ga 44" red      |
| 26         | 175158      | Fuse                            |
| 27         | 73510400    | Nut Keps Hex 1/4-20 Unc         |
| 28         | 4207J       | Cable Ground 6 Ga 12" black     |
| 29         | 121305X     | Switch Plunger Nc Gray          |
| 30         | 175566      | Switch Ign                      |
| 33         | 140401      | Key Ign                         |
| 40         | 170217      | Harness Ignition                |
| 41         | 71110408    | Bolt Blk Fin Hex 1/4 - 20 x 1/2 |
| 42         | 131563      | Cover Terminal Red              |
| 43         | 175141      | Solenoid                        |
| 48         | 140844      | Adapter Ammeter                 |
| 52         | 141940      | Protection Wire Loop            |

**NOTE:** All component dimensions give in U.S. inches  
1 inch = 25.4 mm.

## REPAIR PARTS

**TRACTOR - - MODEL NUMBER 13-96 (MBA13T96B)**

## CHASSIS AND ENCLOSURES



# REPAIR PARTS

## TRACTOR - - MODEL NUMBER 13-96 (MBA13T96B)

### CHASSIS AND ENCLOSURES

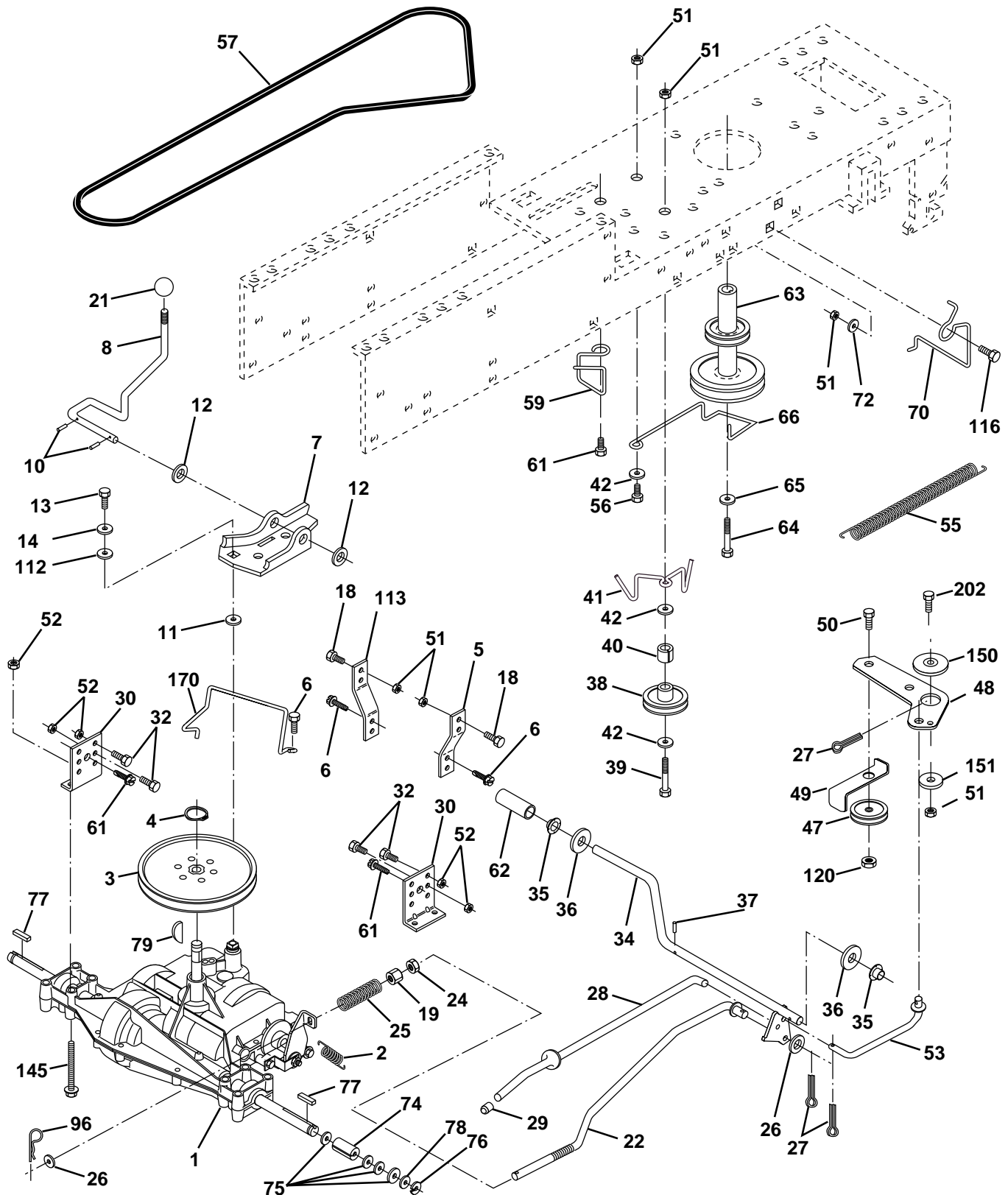
| KEY NO. | PART NO.   | DESCRIPTION                          |
|---------|------------|--------------------------------------|
| 1       | 169831     | Chassis                              |
| 2       | 169061     | Drawbar                              |
| 3       | 17060612   | Screw, 3/8-16 x 3/4 SMGML Tap/R      |
| 5       | 155272     | Bumper Hood/Dash                     |
| 6       | 155924X011 | Saddle Flat                          |
| 8       | 155138     | Clip Retainer Slide-On               |
| 9       | 168347X011 | Dash P/L                             |
| 10      | 72140608   | Bolt, Rdhd Sqnk 3/8-16 x 1           |
| 11      | 155927     | Panel Asm.Dash LH                    |
| 12      | 145660     | Clip Tinnerman Grille P/L            |
| 13      | 172107X010 | Dash, Panel RH                       |
| 15      | 74180512   | Screw Mach.Trhd 5/16-18 UNC x 3/4    |
| 16      | 73510500   | Nut Keps 5/16-18 UNC                 |
| 17      | 159639X558 | Hood Pnt Stl PL                      |
| 18      | 126938X    | Bumper Hood                          |
| 24      | 74780616   | Bolt, Hex , Fin. 3/8-16UNC x 1 Gr. 5 |
| 25      | 19131312   | Washer 13/32 x 13/16 x12 Gauge       |
| 26      | 73800600   | Nut Lock Hex w/Ins. 3/8-16 Unc       |
| 28      | 150407     | Grille/Lens Asm                      |
| 29      | 150209X599 | Lens Grille                          |
| 30      | 169465X558 | Fender Pnt                           |
| 31      | 136619     | Bracket Fender                       |
| 33      | 105476X558 | Footrest Pnt., LH                    |
| 34      | 105475X558 | Footrest Pnt., RH                    |
| 35      | 72110606   | Bolt Rdhd Sht. Sqnk 3/8-16 X 3/4     |
| 37      | 17490508   | Screw Thdrol 5/16-18 x 1/2 Tyt       |
| 38      | 169834     | Bracket Asm Pivot Mower Rear         |
| 51      | 73800400   | Nut Lock Hex W/Ins 1/4-20            |
| 52      | 19091416   | Washer 9/32 x 7/8 x 16 Ga.           |
| 53      | 144697     | Bracket, Grille LH                   |
| 54      | 161464     | Screw Hex WSHD 8-18 x 7/8            |
| 55      | 144696     | Bracket Grille RH                    |
| 57      | 74780412   | Bolt Fin Hex 1/4-20 x 3/4            |
| 145     | 156524     | Rod Pivot Chassis/Hood               |
| 206     | 170165     | Bolt Shoulder 5/16-18                |
| 208     | 17670608   | Screw Thdrol 3/8-16 x 1/2            |
| 209     | 17000612   | Screw Hexwsh Thdr 3/8-16 x 3/4       |
| 212     | 156494     | Insert Lens Reflect                  |
| - -     | 5479J      | Plug Btn Blk .359 Dia Ch/Inf         |

**NOTE:** All component dimensions given in U.S. inches  
1 inch = 25.4 mm

# REPAIR PARTS

TRACTOR - - MODEL NUMBER 13-96 (MBA13T96B)

## DRIVE





# REPAIR PARTS

## TRACTOR - - MODEL NUMBER 13-96 (MBA13T96B)

### DRIVE

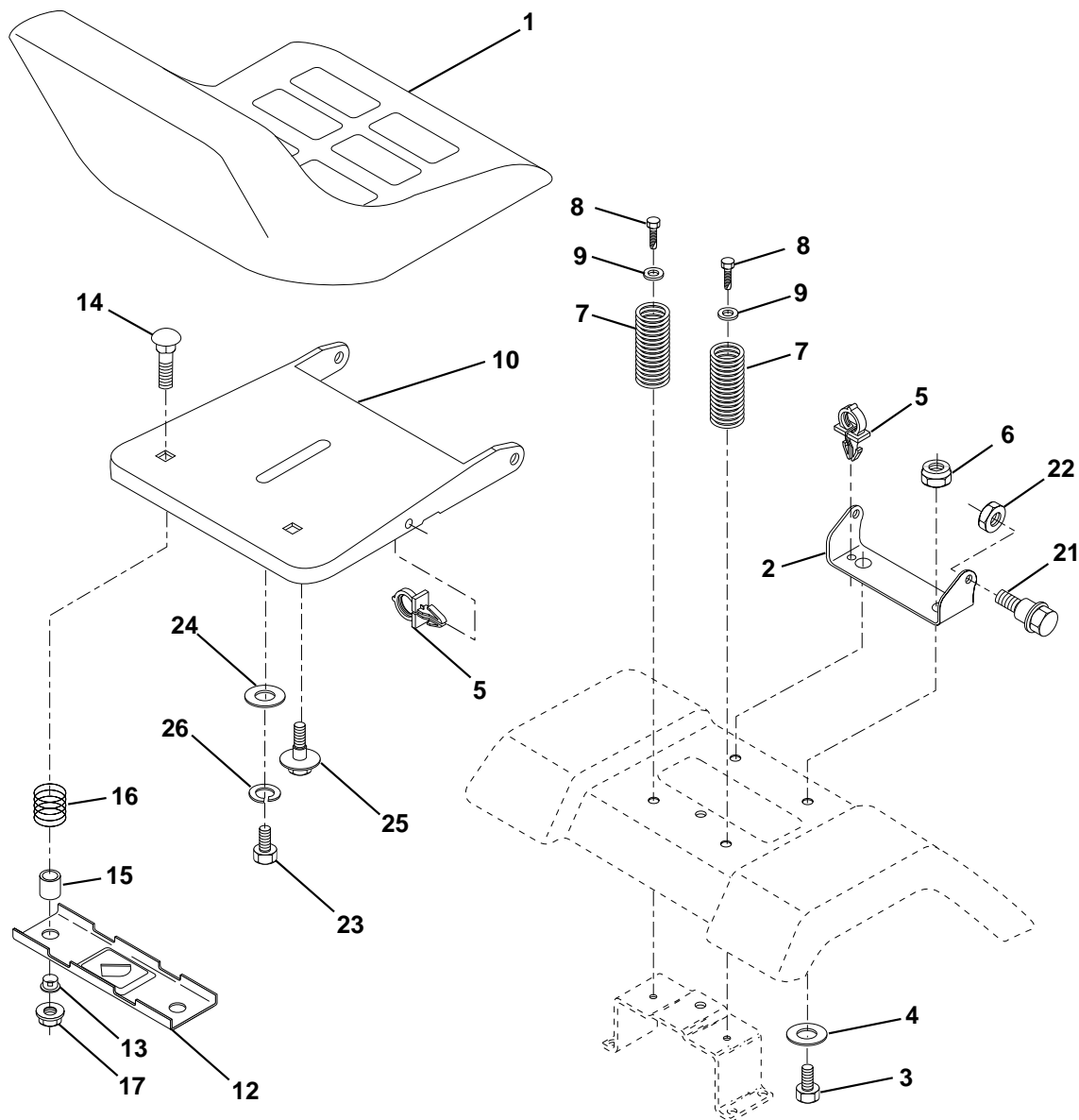
| KEY NO. | PART NO. | DESCRIPTION   | KEY NO. | PART NO.        | DESCRIPTION                       |
|---------|----------|---|---------|-----------------|-----------------------------------|
| 1       | -----    | Transaxle (See Breakdown) Peerless, Model 205-544C<br>Order parts from transaxle manufacturer | 48      | 154407          | Bellcrank Asm Clutch              |
| 2       | 146682   | Spring, Brake Return  | 49      | 123205X         | Retainer, Belt                    |
| 3       | 123666X  | Pulley, Transaxle   | 50      | 74760624        | Bolt, Hex 3/8-16 x 1-1/2          |
| 4       | 12000028 | Ring, Retainer  | 51      | 73680600        | Nut, Crownlock 3/8-16             |
| 5       | 121520X  | Strap, Torque   | 52      | 73680500        | Nut, Crownlock 5/16-18            |
| 6       | 17060512 | Screw, 5/16-18 x 3/4 SMGML  | 53      | 105710X         | Link, Clutch                      |
| 7       | 162240   | Bracket, T/A, Saddle Shift  | 55      | 105709X         | Spring, Return, Clutch            |
| 8       | 131679   | Rod, Shifter  | 56      | 74760620        | Bolt, Fin, Hex 3/8-16unc x 1-1/2  |
| 10      | 76020416 | Pin, Cotter 1/8 x 1   | 57      | 130801          | V-Belt, Drive                     |
| 11      | 105701X  | Washer, Shift Plate   | 59      | 169691          | Keeper Belt Center Span           |
| 12      | 19151216 | Washer 15/32 x 3/4 x 16   | 61      | 17060612        | Screw, 3/8-16 x 3/4 SMGML         |
| 13      | 74550412 | Bolt 1/4-28 UNF Gr. 8 w/Patch   | 62      | 8883R           | Cover, Foot Pedal                 |
| 14      | 10040400 | Washer Lock   | 63      | 140186          | Pulley, Engine                    |
| 18      | 74780616 | Bolt, Fin Hex 3/8-16 Unc x 1 Gr. 5  | 64      | 71170764        | Bolt, Hex 7/16-20 x 4 Gr. 5       |
| 19      | 73800600 | Locknut 3/8-16  | 65      | 10040700        | Washer, Lock Hvy Hlcl Spr 7/16    |
| 21      | 106933X  | Knob  | 66      | 154778          | Keeper, Belt Engine F-Proof       |
| 22      | 130804   | Rod, Brake  | 70      | 134683          | Guide Belt Mower Drive RH         |
| 24      | 73350600 | Nut, Hex Jam 3/8-16   | 72      | 19132012        | Washer 13/32 x 1-1/4 x 12 Ga.     |
| 25      | 106888X  | Spring, Rod, Brake  | 74      | 137057          | Spacer, Split                     |
| 26      | 19131316 | Washer 13/32 x 13/16 x 16 Gauge   | 75      | 121749X         | Washer 25/32 x 1-1/4 x 16 Ga.     |
| 27      | 76020412 | Pin, Cotter 1/8 x 3/4   | 76      | 12000001        | E-Ring                            |
| 28      | 145204   | Rod, Brake, Park  | 77      | 123583X         | Key Square                        |
| 29      | 71673    | Cap, Plunger  | 78      | 121748X         | Washer 25/32 x 1-5/8 x 16 Ga.     |
| 30      | 174973   | Bracket, Transaxle  | 79      | 2228M           | Key Woodruff #9 3/16 x 3/4        |
| 32      | 74760512 | Bolt Hex Hd 5/16-18 UNC x 3/4   | 96      | 4497H           | Retainer Spring 1" Ziinc/Cad      |
| 34      | 155071   | Shaft, Foot Pedal   | 112     | 19091210        | Washer 9/32 x 3/4 x 10 Ga.        |
| 35      | 120183X  | Bearing Nylon   | 113     | 127285X         | Strap Torque L.H. Lt              |
| 36      | 19211616 | Washer 21/32 x 1 x 16 Gauge   | 116     | 72110610        | Bolt, RdHd Sq Neck 3/8-16 x 1.25  |
| 37      | 1572H    | Pin, Roll 3/16 x 1  | 120     | <b>73900600</b> | Nut Lock Flg 3/8-16               |
| 38      | 131494   | Idler, Flat   | 145     | 74490540        | Bolt, Hex Flghd 5/16-18 Gr. 5     |
| 39      | 74760644 | Bolt Fin Hex 3/8-16 Unc x 2-3/4   | 150     | 165850          | Bushing, Bellcrank Grd Dr.        |
| 40      | 4470J    | Spacer  | 151     | 19133210        | Washer 13/32 x 2 x 10 Ga.         |
| 41      | 165838   | Keeper, Belt  | 170     | 173898          | Keeper, Belt, Transaxle           |
| 42      | 19131312 | Washer 13/32 x 13/16 x 12 Gauge   | 202     | 72110612        | Bolt Carr Sh 3/8-16 x 1-1/2 Gr. 5 |
| 47      | 127783   | Pulley, Idler   |         |                 |                                   |

**NOTE:** All component dimensions give in U.S. inches.  
1 inch = 25.4 mm.

# REPAIR PARTS

## TRACTOR - - MODEL NUMBER 13-96 (MBA13T96B)

### SEAT



| KEY NO. | PART NO. | DESCRIPTION                     |
|---------|----------|---------------------------------|
| 1       | 175389   | Seat                            |
| 2       | 140551   | Bracket, Pivot, Seat            |
| 3       | 71110616 | Fin Hex 3/8-16unc x 1           |
| 4       | 19131610 | Washer 13/32 x 1 x 10 Ga.       |
| 5       | 145006   | Clip, Push-in                   |
| 6       | 73800600 | Nut                             |
| 7       | 124181X  | Spring, Seat                    |
| 8       | 17000616 | Screw, 3/8-16 x 1.5 SMGML Tap/R |
| 9       | 19131614 | Washer 13/32 x 1 x 14 Ga.       |
| 10      | 174894   | Pan, Seat                       |
| 12      | 121246X  | Bracket, Mounting, Switch, Seat |
| 13      | 121248X  | Bushing, Nylon                  |

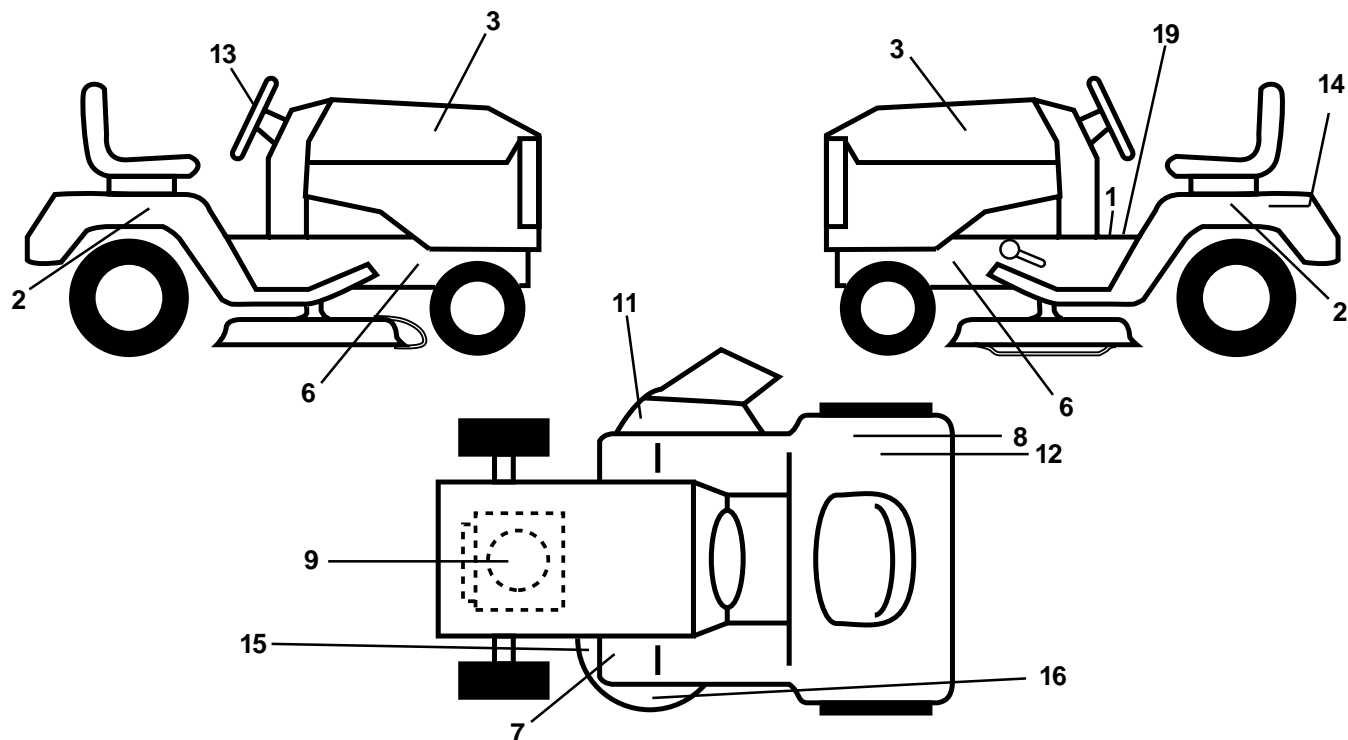
| KEY NO. | PART NO. | DESCRIPTION                    |
|---------|----------|--------------------------------|
| 14      | 72050412 | Nut, Crownlock 1/4-20 x 1-3/8  |
| 15      | 134300   | Spacer, Split                  |
| 16      | 121250X  | Spring                         |
| 17      | 123976X  | Nut, Lock, Flange 1/4 Gr. 5    |
| 21      | 171852   | Bolt, Shoulder 5/16-18 UNC-2A  |
| 22      | 73800500 | Nut                            |
| 23      | 71110814 | Bolt Hex Black                 |
| 24      | 19171912 | Washer 17/32 x 1-3/16 x 12 Ga. |
| 25      | 127018X  | Bolt Shoulder 5/16-18 x .62    |
| 26      | 10040800 | Washer Lock Hvy Hclc Spr 1/2   |

**NOTE:** All component dimensions given in U.S. inches  
1 inch = 25.4 mm

# REPAIR PARTS

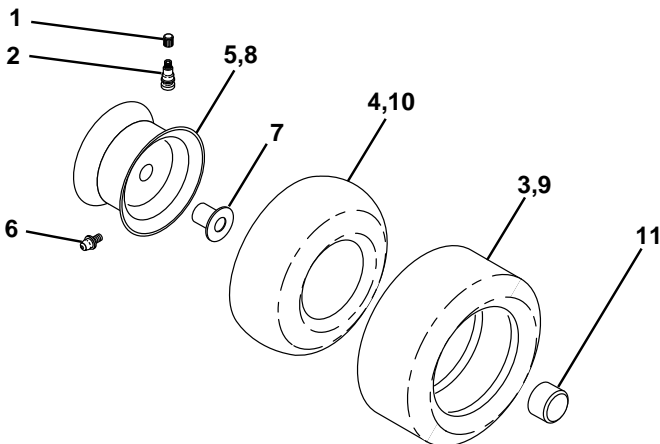
## TRACTOR - - MODEL NUMBER 13-96 (MBA13T96B)

### DECALS



| KEY NO. | PART NO.   | DESCRIPTION                       | KEY NO. | PART NO.      | DESCRIPTION                                      |
|---------|------------|-----------------------------------|---------|---------------|--|
| 1       | 145498     | Decal, Instruction, Operation     | 13      | 167970        | Decal, Wheel Steering                            |
| 2       | 175806     | Decal, Fender                     | 14      | 145005        | Decal, Btry Dngr/Psn P/L Sym                     |
| 3       | 171668     | Decal, Hood                       | 15      | 136832        | Decal, V-Belt                                    |
| 6       | 159736     | Decal, Chassis Hot Muffler        | 16      | 134999        | Decal, Deck                                      |
| 7       | 159737     | Decal, Brake/Clutch Symbol LT     | 19      | 140837        | Decal, Parking Brake                             |
| 8       | 145437     | Decal, Europe Stand CE            | --      | 138311        | Decal, Handle, Lift, Height Adjust (Lift Handle) |
| 9       | 64-1726-29 | Decal, HP Engine                  | --      | 162598        | Decal, Drawbar Load Limit                        |
| 11      | 145494     | Decal, Mower Cutting Blade Symbol | --      | <b>177250</b> | Manual, (Euro) Operator's                        |
| 12      | 126187X    | Decal 100 DBA                     | --      | <b>177251</b> | Manual, Repair Parts                             |

### TIRES AND WHEELS



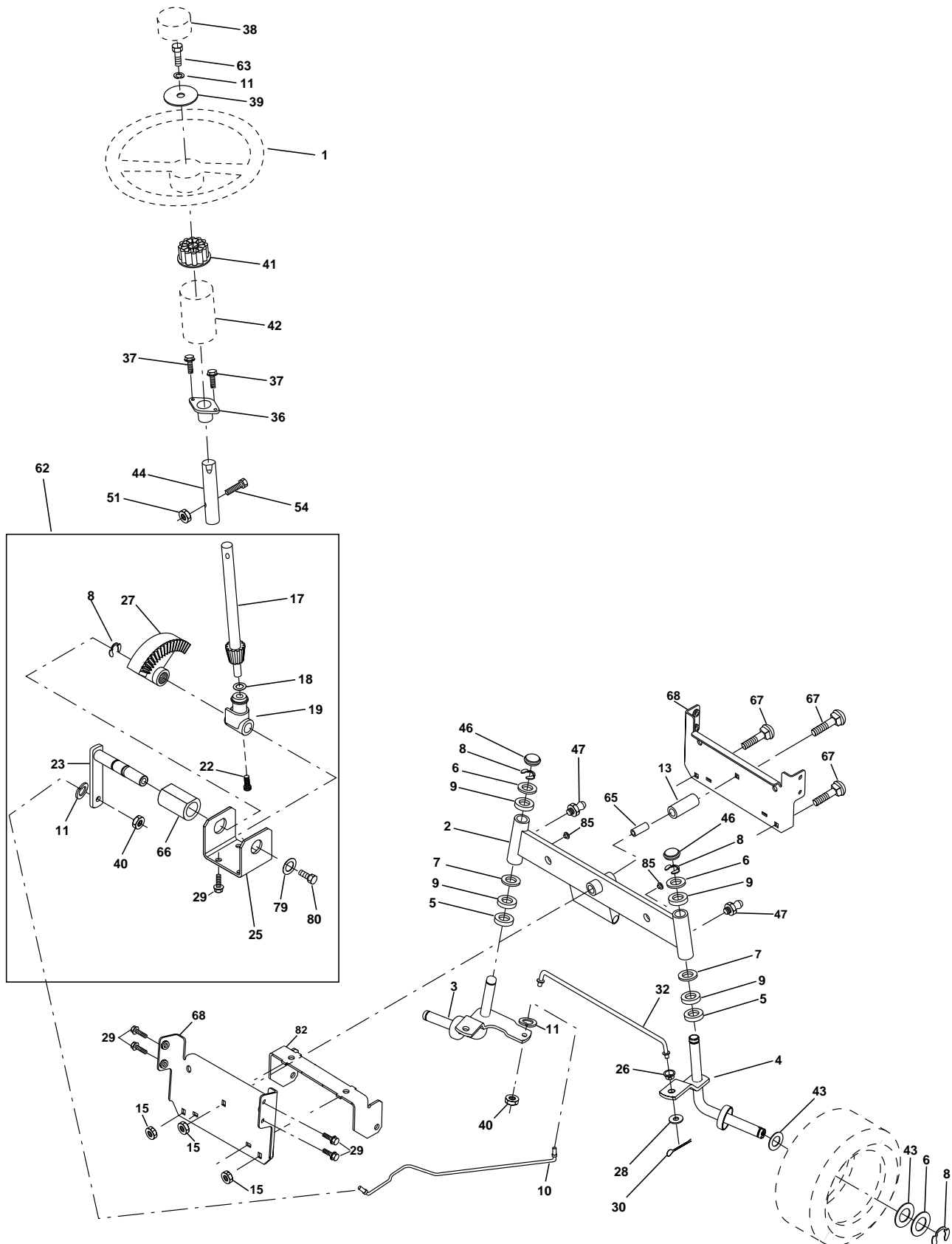
| KEY NO. | PART NO.   | DESCRIPTION                       |
|---------|------------|-----------------------------------|
| 1       | 59192      | Cap, Valve                        |
| 2       | 65139      | Stem, Valve                       |
| 3       | 106222X    | Tire Front                        |
| 4       | 59904      | Tube, Front (not furnished)       |
| 5       | 106732X427 | Rim, Asm. Front                   |
| 6       | 278H       | Grease Fitting (rear tire only)   |
| 7       | 9040H      | Bearing, Flange (front tire only) |
| 8       | 106108X427 | Rim, Asm. Rear                    |
| 9       | 124635X    | Tire, Rear                        |
| 10      | 7152J      | Tube, Rear (not furnished)        |
| 11      | 104757X428 | Cap, Axle                         |
| --      | 144334     | Sealant, Tire (10 oz. Tube)       |

**NOTE:** All component dimensions given in U.S. inches  
1 inch = 25.4 mm

# REPAIR PARTS

TRACTOR - - MODEL NUMBER 13-96 (MBA13T96B)

## STEERING WHEEL



# REPAIR PARTS

## TRACTOR - - MODEL NUMBER 13-96 (MBA13T96B)

### STEERING WHEEL

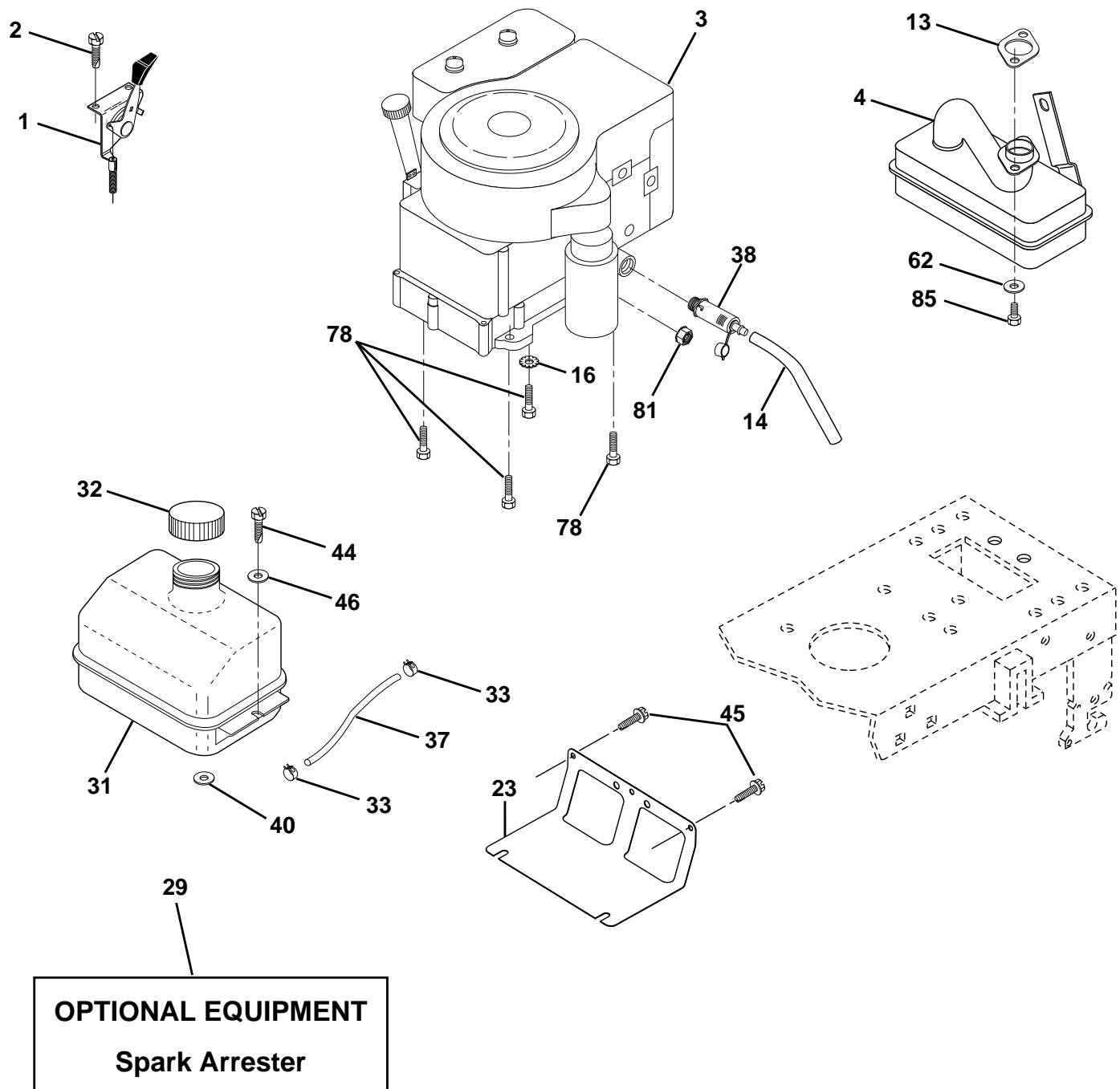
| KEY NO. | PART NO.   | DESCRIPTION                        |
|---------|------------|------------------------------------|
| 1       | 139768     | Wheel Steering                     |
| 2       | 154427     | Axle Asm Front                     |
| 3       | 169840     | Spindle Asm LH                     |
| 4       | 169839     | Spindle Asm RH                     |
| 5       | 6266H      | Bearing, Race, Thrust Hardened     |
| 6       | 121748X    | Washer 25/32 X 1-5/8 X 16 Ga       |
| 7       | 19272016   | Washer 27/32 X 1-1/4 X 16 Ga       |
| 8       | 12000029   | Ring Klip                          |
| 9       | 3366R      | Bearing                            |
| 10      | 169832     | Link Drag                          |
| 11      | 10040600   | Washer Lock Hvy Hlcl Spr 3/8       |
| 13      | 136518     | Spacer Brg. Axle Front             |
| 15      | 145212     | Nut Hexflange Lock                 |
| 17      | 156546     | Steering, Assembly Shaft           |
| 18      | 57079      | Washer Thrust 515x 750x 033        |
| 19      | 160395     | Support Shaft                      |
| 22      | 165857     | Screw Hex WSHHD Torx               |
| 23      | 165851     | Shaft Asm Pittman                  |
| 25      | 154406     | Bracket Steering                   |
| 26      | 126847X    | Bushing Link Drag Blk Lr           |
| 27      | 136874     | Gear Sector                        |
| 28      | 19131416   | Washer 13/32 x 7/8 x 16 Ga.        |
| 29      | 17060612   | Screw 3/8-16x3/4 SMGML Tap/R       |
| 30      | 76020412   | Pin Cotter 1/8 x 3/4 CAD           |
| 32      | 130465     | Rod Connecting                     |
| 36      | 155099     | Bushing Steering                   |
| 37      | 152927     | Screw TT #10-32 X 5 x 3/8 Flange   |
| 38      | 140175     | Cap Wheel Steering                 |
| 39      | 19133812   | Washer 13/32 x 2-3/8 x 12 Ga       |
| 40      | 7810H      | Nut Lock Center 3/8-24 Unf         |
| 41      | 100711L    | Adapter Wheel Strg                 |
| 42      | 145054X428 | Boot Steering                      |
| 43      | 121749X    | Washer 25/32 X 1 1/4 X 16 Ga       |
| 44      | 153720     | Extension Steering                 |
| 46      | 121232X    | Cap Spindle                        |
| 47      | 6855M      | Fitting Grease                     |
| 51      | 73800500   | Nut Lock Hex W/Ins. 5/16-18 Unc P  |
| 54      | 74780520   | Bolt Fin Hex 5/16-18 Unc 6 x 1-1/4 |
| 62      | 167902     | Kit Steering Asm. Service          |
| 63      | 74780616   | Bolt Fin Hex 3/8-16unc x 1 Gr. 5   |
| 65      | 160367     | Spacer Brace Axle                  |
| 66      | 154404     | Bearing Arm Pittman                |
| 67      | 72140618   | Bolt RDHD SQ 3/8-16UNC x 2-1/4     |
| 68      | 169827     | Brace Axle                         |
| 79      | 19132012   | Washer 13/32 x 1-1/4 x 12          |
| 80      | 74950612   | Bolt, Hex Nylon 3/8-16 x 3/4       |
| 82      | 169835     | Bracket Susp. Chassis Front        |
| 85      | 133835     | Fastener Christmas Tree            |

**NOTE:** All component dimensions given in U.S. inches  
1 inch = 25.4 mm

# REPAIR PARTS

TRACTOR - - MODEL NUMBER 13-96 (MBA13T96B)

## ENGINE



# REPAIR PARTS

## TRACTOR - - MODEL NUMBER 13-96 (MBA13T96B)

### ENGINE

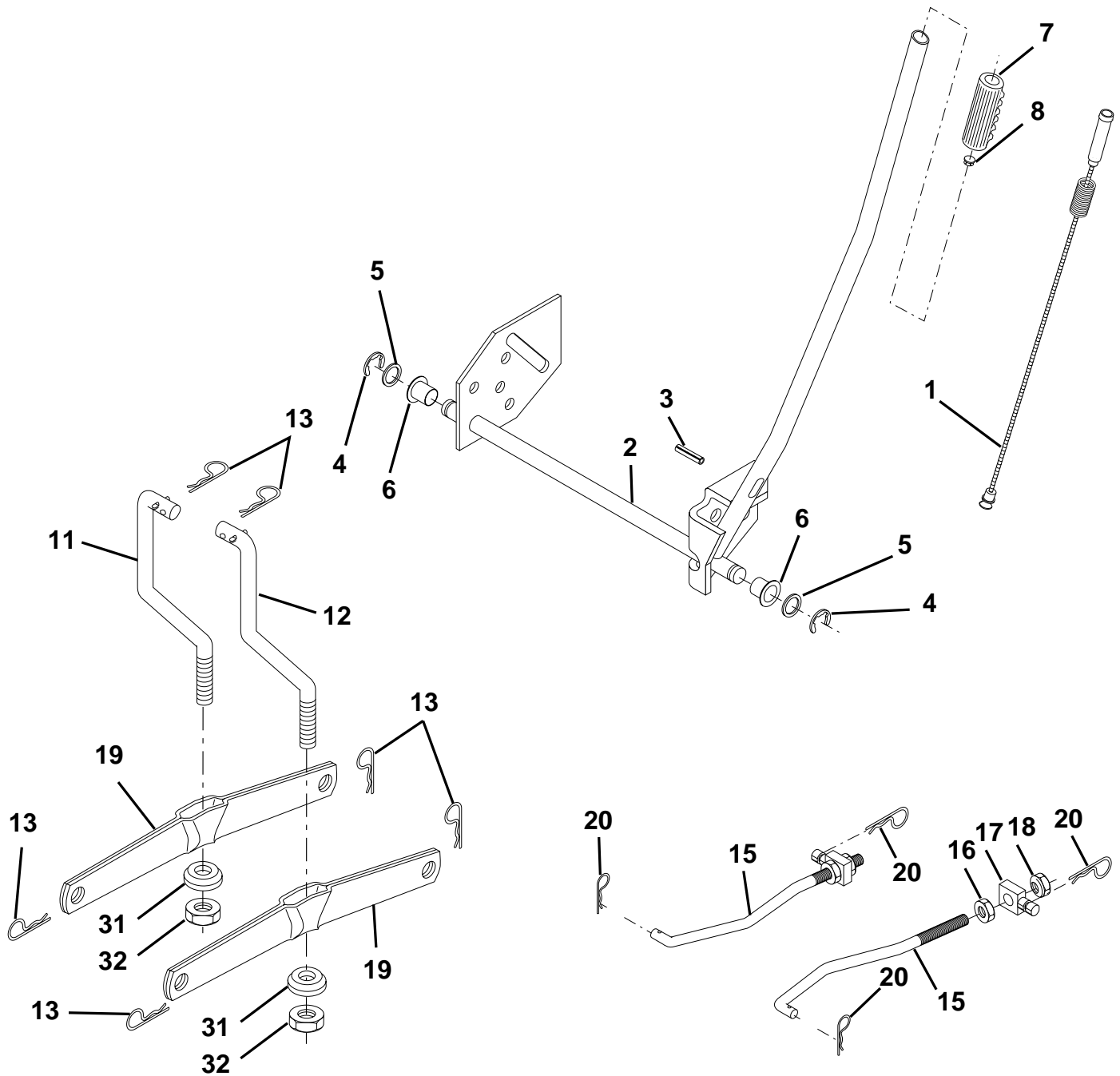
| KEY NO. | PART NO. | DESCRIPTION  |
|---------|----------|--|
| 1       | 170864   | Control Th/ch  |
| 2       | 17720410 | Screw Hex Thd Cut 1/4-20x5/8 T   |
| 3       | -----    | Engine, Tecumseh Model OHV 135<br>Order parts from engine manufacturer |
| 4       | 156700   | Muffler Exhaust  |
| 13      | 165291   | Gasket Muffler   |
| 14      | 148456   | Tube Drain Oil Easy  |
| 16      | 11050600 | Washer Lock Ext Tooth 3/8  |
| 23      | 169837   | Shield BRN/DBR Guard   |
| 29      | 137180   | Kit Spark Arrestor (Flat Scrn)   |
| 31      | 109202X  | Tank Fuel Front  |
| 32      | 140527   | Cap Asm Fuel   |
| 33      | 123487X  | Clamp Hose Blk   |
| 37      | 137040   | Line Fuel  |
| 38      | 148315   | Plug Drain Oil Easy  |
| 40      | 124028X  | Bushing Snap Nyl Blk Fuel Line   |
| 44      | 17670412 | Screw Hexwsh Thdrol 1/4-20x3/4   |
| 45      | 17000612 | Screw Hex Wsh Thdrol 3/8-16  |
| 46      | 19091416 | Washer 9/32 X 7/8 X 16 Ga  |
| 62      | 10040500 | Washer 5/16  |
| 78      | 17060620 | Screw 3/8-16x1-1/4 SMGML Tap/R   |
| 81      | 73510400 | Nut Keps Hex 1/4-20 UNC  |
| 85      | 123528X  | Bolt, Hex Hd Phillips  |

**NOTE:** All component dimensions given in U.S. inches.  
1 inch = 25.4 mm.

# REPAIR PARTS

TRACTOR - - MODEL NUMBER 13-96 (MBA13T96B)

## MOWER LIFT





# REPAIR PARTS

## TRACTOR - - MODEL NUMBER 13-96 (MBA13T96B)

### MOWER LIFT

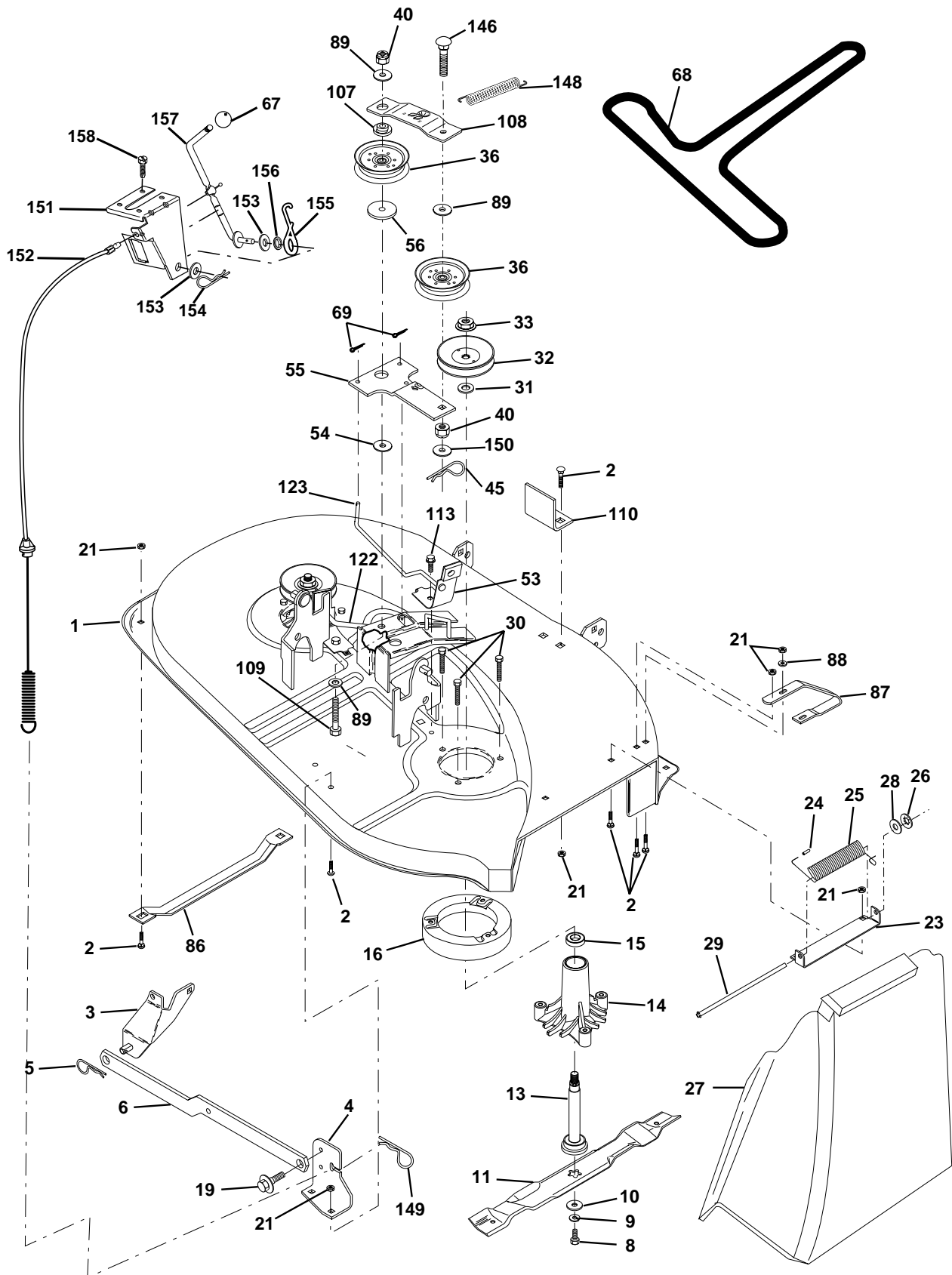
| KEY<br>NO. | PART<br>NO. | DESCRIPTION                    |
|------------|-------------|--------------------------------|
| 1          | 159460      | Wire Asm. Inner/Sprg w/Plunger |
| 2          | 159471      | Shaft, Asm., Lift R/H          |
| 3          | 105767X     | Pin, Groove                    |
| 4          | 12000002    | Ring, E #5133-62               |
| 5          | 19211621    | Washer 21/32 x 1 x 21 Ga.      |
| 6          | 120183X     | Bearing, Nylon                 |
| 7          | 109413X     | Grip Handle Bicycle Matte Blk  |
| 8          | 124526X     | Button, Plunger                |
| 11         | 139865      | Link, Lift, Lh                 |
| 12         | 139866      | Link, Lift, Rh                 |
| 13         | 4939M       | Spring, Retainer               |
| 15         | 173288      | Link, Front                    |
| 16         | 73350800    | Nut, Jam, Hex 1/2-13 Unc       |
| 17         | 130171      | Trunnion                       |
| 18         | 73800800    | Nut, lock w/wsh 1/2-13 Unc     |
| 19         | 139868      | Arm, Suspension, Rear          |
| 20         | 163552      | Spring, Retainer Zinc          |
| 31         | 169865      | Bearing, Pvt Lft               |
| 32         | 73540600    | Nut Crownlock 3/8-24           |

**NOTE:** All component dimensions given in U.S. inches  
1 inch = 25.4 mm

# REPAIR PARTS

TRACTOR - - MODEL NUMBER 13-96 (MBA13T96B)

## MOWER DECK



# REPAIR PARTS

## TRACTOR - - MODEL NUMBER 13-96 (MBA13T96B)

### MOWER DECK

| KEY NO. | PART NO.      | DESCRIPTION                     | KEY NO. | PART NO. | DESCRIPTION   |
|---------|---------------|---------------------------------|---------|----------|---|
| 1       | 170280        | Mower Housing Assembly          | 56      | 165723   | Spacer, Retainer  |
| 2       | 72140506      | Bolt Carriage 5/16-18 x 3/4     | 67      | 106932X  | Knob  |
| 3       | 138017        | Bracket Asm Fr. Sway Bar        | 68      | 144200   | V-Belt, 42" Mower   |
| 4       | 169970        | Bracket Deck Sway Bar 38"/42"   | 69      | 76020312 | Pin, Cotter 3/32 x 3/4  |
| 5       | 4939M         | Retainer Spring                 | 86      | 7631J    | Runner, LH  |
| 6       | 130832        | Arm, Suspension, Rear           | 87      | 128772   | Runner, RH  |
| 8       | 850857        | Bolt 3/8-24 x 1.25 Grade 8      | 88      | 19111216 | Washer 11/32 x 3/4 x 16 Ga                                      |
| 9       | 10030600      | Washer, Lock 3/8                | 89      | 19131612 | Washer 13/32 x 1 x 12 Ga.                                       |
| 10      | 140296        | Washer, Hardened                | 107     | 133502   | Spacer Retainer   |
| 11      | 138497        | Blade Mower                     | 108     | 133503   | Stiffener, Idler Arm  |
| 13      | 137645        | Shaft Assembly, Mandrel, Vented | 109     | 74760640 | Bolt, Hex Hd 3/8-16 x 2-1/2                                     |
| 14      | 128774        | Housing, Mandrel, Vented        | 110     | 142587   | Upstop Deck Front 38"   |
| 15      | 110485X       | Bearing, Ball, Mandrel          | 113     | 17060512 | Screw 5/16-1/ x 3/4   |
| 16      | <b>174493</b> | Stripper, Mower Deck            | 122     | 131289   | Rod, Brake LH   |
| 19      | 132827        | Bolt, Shoulder                  | 123     | 169971   | Rod, Brake RH   |
| 21      | 73680500      | Nut                             | 146     | 165891   | Bolt Carriage Idler   |
| 23      | 137607        | Bracket, Mower Deflector        | 148     | 169022   | Spring Return Idler   |
| 24      | 105304X       | Cap, Sleeve                     | 149     | 165898   | Retainer Spring Yellow  |
| 25      | 123713X       | Spring, Torsion, Deflector      | 150     | 19091216 | Washer 9/32 x 3/4 x 16 Ga.                                      |
| 26      | 110452X       | Nut, Push                       | 151     | 169670   | Bracket Clutch Cable  |
| 27      | 106736x428    | Shield, Deflector               | 152     | 172758   | Clutch Cable 38"/46"  |
| 28      | 19111016      | Washer 11/32 x 5/8 x 16 Gauge   | 153     | 169674   | Washer Flat 3/8" Type B   |
| 29      | 106735X       | Rod, Hinge                      | 154     | 169675   | Spring Retainer   |
| 30      | 157722        | Screw Thdrol. Washer Head       | 155     | 169671   | Spring Retention LVR CLTCH CAB                                  |
| 31      | 129963        | Washer, Spacer                  | 156     | 169672   | Spacer Clutch Cable   |
| 32      | 153532        | Pulley, Mandrel                 | 157     | 169669   | Rod Clutch Cable 3/8"   |
| 33      | 137266        | Nut, Toplock 9/16               | 158     | 17720410 | Screw Hex Thd Cut 1/4-20 x 5/8                                  |
| 36      | 131494        | Pulley, Idler, Flat             | --      | 130794   | Mandrel Assembly (Includes Key Numbers 12-15, 17-19, 31 and 33) |
| 40      | 73680600      | Nut, Crownlock 3/8-16 Unc       | --      | 170317   | Mower Deck, Complete  |
| 45      | 4497H         | Retainer                        |         |          |   |
| 53      | 130840        | Brake Assembly                  |         |          |   |
| 54      | 133943        | Washer, Hardened                |         |          |   |
| 55      | 133840        | Idler Arm Assembly              |         |          |   |

**NOTE:** All component dimensions given in U.S. inches  
1 inch = 25.4 mm



# SERVICE POLICY WARRANTY



Issued January 1980  
Revised January 1991

## LIMITED WARRANTIES FOR NEW PEERLESS GEAR POWER TRAIN COMPONENTS

### **A. Products Warranted**

Peerless Gear and Machine Division of Tecumseh Products Company ("Tecumseh"), subject to the limitations contained below, will, at its option, repair or replace, without charge for parts or labor only, any part of a new Power Train Component (which as used herein means and includes the transaxle, gear box, transmission, differential and right angle drives, and any part of the Power Train Component), EXCEPT any new Power Train Component incorporated in equipment used for commercial or rental purposes, which is found upon examination by any Tecumseh Authorized Service Outlet or by Tecumseh's factory in Grafton, Wisconsin, to be DEFECTIVE IN MATERIAL AND/OR WORKMANSHIP if received by Tecumseh or a Tecumseh Authorized Service Outlet for such examination within TWO YEARS from the date of sale to the original consumer purchaser of Peerless Series 820, 900, 910, 915, 920, 930 transaxles and Series 1100 angle drive and ONE YEAR for all other Peerless products. New Power Train Components incorporated in equipment used for commercial purposes are warranted in the same manner and to the same extent EXCEPT such Power Train Components are warranted for NINETY (90) DAYS ONLY, and must be received by Tecumseh or by a Tecumseh Authorized Service Outlet for such examination within 90 days from the date of sale to the original purchaser. New Power Train Components Incorporated in equipment used for rental purposes are warranted in the same manner and to the same extent EXCEPT such Power Train Components are warranted for THIRTY (30) DAYS ONLY, and must be received by Tecumseh or a Tecumseh Authorized Service Outlet within 30 days from the date of sale to the original purchaser.

### **B. Products And Items Not Warranted**

1. Alterations or Modifications of Power Train Components.
2. Accidents, Normal Maintenance, Failure to follow the Original Equipment Manufacturer's Manual.

This warranty covers only parts of new Power Train Components which are found upon examination to be defective in material or workmanship as delivered to the original purchaser. This warranty does not cover defects caused by depreciation or damage caused by normal wear, accidents, improper maintenance, improper use or abuse of the product, failure to follow the instructions contained in an Instruction Manual for the operation of the Power Train Component and parts. The cost of normal maintenance and replacement of service items which are not defective shall be paid for by the original purchaser.

### **C. Securing Warranty Service**

Warranty service can be arranged for by contacting either a Tecumseh Authorized Service Outlet (any Tecumseh Registered Service Dealer, Tecumseh Authorized Service Distributor, or Tecumseh Central Warehouse Distributor) or by contacting Tecumseh, c/o Service Manager, Engine and Transmission Group Service Division, 900 North Street, Grafton, Wisconsin 53024. Warranty service can only be performed by a Tecumseh Authorized Service Outlet or by Tecumseh at its factory in Grafton, Wisconsin. At the time of requesting warranty service, evidence must be presented of the date of sale to the original purchaser. The purchaser shall pay any charges for making service calls and/or for transporting the product to and from the place where the inspection and/or warranty work is performed. The purchaser shall be responsible for any damage or loss incurred in connection with the transportation of Power Train Components and/or part(s) of the Power Train Components submitted for inspection and/or warranty work.

### **D. Limitation of Damages and Implied Warranties**

The foregoing EXPRESSED WARRANTY IS IN LIEU OF ALL OTHER EXPRESS WARRANTIES. Neither Tecumseh nor any of its affiliates makes any warranties, representations or promises, written or oral, as to the quality of the Power Train Component or any of its parts, other than as set forth herein.

ANY IMPLIED WARRANTY OF MERCHANTABILITY OR FITNESS FOR A PARTICULAR PURPOSE, TO THE EXTENT THAT EITHER MAY APPLY TO ANY PART(S) OF POWER TRAIN COMPONENTS, SHALL BE LIMITED IN DURATION TO THE PERIODS OF THE EXPRESSED WARRANTIES DEFINED IN PARAGRAPH A HEREOF. IN NO EVENT WILL TECUMSEH BE LIABLE FOR ANY INCIDENTAL, CONSEQUENTIAL OR SPECIAL DAMAGES AND/OR EXPENSES. Some states do not allow limitations on how long an implied warranty lasts or the exclusion or limitation of incidental or consequential damages, so the above limitation(s) or exclusion(s) may not apply to you. This warranty gives you specific legal rights and you may also have other legal rights which vary from state to state.

### **E. No Dealer Warranty**

Tecumseh neither assumes nor authorizes any other person, natural or corporate, to assume for Tecumseh any other obligations or liabilities in connection with or with respect to any part(s) of a Power Train Component. The seller or dealer of part(s) of a Power Train Component has no authority, whatsoever, to make any representations or promises on behalf of Tecumseh or to modify the terms or limitations of Tecumseh's warranty in any way.

**Mr. Bricolage**