

WSP 4000 Art. 7860

WSP 7000 Art. 7861

D Gebrauchsanweisung
Wasserspiel- / Bachlaufpumpe

GB Operating Instructions
Fountain / Stream Pump

F Mode d'emploi
Pompe pour jets d'eau et cascades

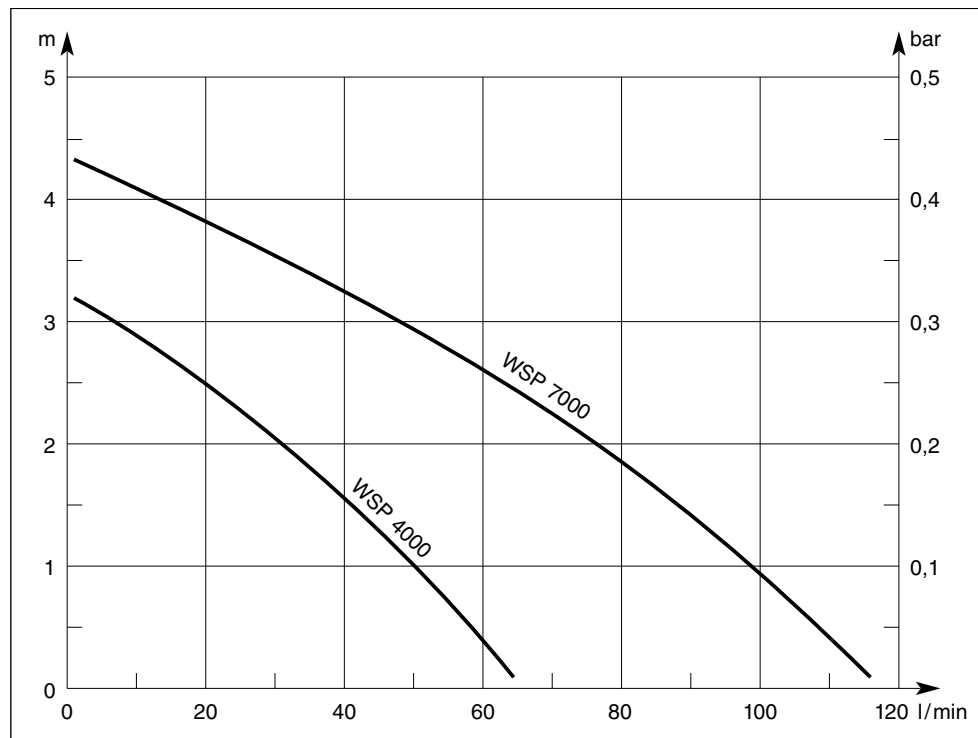
NL Gebruiksaanwijzing
Waterspel- / beeklooppomp

S Bruksanvisning
Fontän / Bäck Pump

I Istruzioni per l'uso
Pompa per ruscelli e giochi d'acqua

E Manual de instrucciones
Bomba para juego de agua / recorridos del agua

DK Brugsanvisning
Fontæne / Vandløbs Pumpe



D

Bitte lesen Sie diese
Gebrauchsanweisung
vor Inbetriebnahme Ihres
Gerätes sorgfältig.

Gebrauchsanweisung Seite
2 - 10

GB

Please read these operating
instructions carefully before
using the unit.

Operating instructions Page
11 - 16

F

Nous vous remercions de
bien vouloir lire attentive-
ment ce mode d'emploi
avant l'utilisation de votre
pompe.

Mode d'emploi Page
17 - 23

NL

Lees deze gebruiksaanwij-
zing voor ingebruikname
van het apparaat zorgvuldig
door.

Gebruiksaanwijzing Pagina
24 - 30

S

Läs igenom bruksanvisnin-
gen noggrant innan Du tar
Din GARDENA Pump i bruk.

Bruksanvisning Sida
31 - 37

I

Prima di mettere in uso
la nuova pompa, leggere
attentamente le istruzioni.

Istruzioni per l'uso pagina
38 - 44

E

Antes de la puesta en
marcha del aparato, acon-
sejamos una atenta lectura
del presente manual de
instrucciones.

Manual de instrucciones Página
45 - 51

DK

Læs venligst brugsanvis-
ningen omhyggeligt igen-
nem.

Brugsanvisning Side
52 - 58

GARDENA Fountain/Stream Pump

WSP 4000 / WSP 7000

Welcome to GARDENA aquamation ...



Please read these operating instructions carefully and observe the notes given.

Use the instructions to familiarise yourself with the equipment, the operating controls, their correct use, and the notes on safety.

⚠ For safety reasons, children under 16 as well as persons not familiar with these operating instructions should not use this pump.

Keep these operating instructions in a safe place.

The Applications Range of Your Pump

Intended purpose

GARDENA Fountain/Stream Pumps have been designed for private use. They are not designed for operating watering tools and systems. The pumps may be used indoors as well as outdoors.

Attention

⚠ GARDENA Fountain/Stream Pumps have not been designed for constant use in the industrial sector. Do not use in swimming pools. Corrosive, easily combustible, aggressive or explosive substances (e.g. petrol, petroleum, nitro thinner) as well as salt-water or food / drinking water must not be pumped.

For Your Safety

Operating the pump

The pump must be operated via a residual current device (type A according to EN 61008-1) with a residual current rating of ≤ 30 mA (DIN VDE 0100-702 and 0100-738). The pump must be placed on solid, even ground. Please ask your electrician for his advice.

Mains power cables

Mains power cables should not have a smaller cross-section than a rubber sheathed cable of the designation H05 RNF. Extension cables must meet the requirements of DIN VDE 0620.

For Austria

In Austria power cables should correspond to ÖVE-EM 42, T 2 (2000)/1979 § 22 according to § 2022.1. According to this standard pumps used in swimming pools and ponds should only be operated via an isolating transformer. Please contact your electrician.

For Switzerland

In Switzerland mobile appliances which are used outdoors, must be connected via a residual-current device.

Visual check

Before operating the pump, look to see if there is any damage of the pump (esp. regarding power cable and plug). A damaged pump must not be used. In case of damage, please have the pump checked by our GARDENA Service Centre or by an authorised electrician.

Check line voltage	Check line voltage. Data indicated on the type plate must match technical data of the mains supply.
Do not operate pump when there are people in the water	The pump must not be operated when there are people in the water.
Garden ponds	Garden ponds should be designed according to international and national design regulations. Please consult a professional electrician.
Do not use power cable to carry the pump	Do not use the power cable to carry the pump or to pull the plug out of the socket. Protect the power cable from heat, oil and sharp edges.
Disconnect plug	Please unplug the pump after operation and before carrying out any maintenance works.
Temperature of the liquid used	The temperature of the liquid used must not be below 4 °C or above 35 °C.
Wear and reduced output	Sand and other abrasive substances in the liquid cause increased wear and reduce the output of the pump.
Observe local noise prevention regulations	Please observe the local noise prevention regulations.

Applications: Examples – System Extensions – Product Recommendations

Water jets for 33.3 mm (G 1) thread connections → Example for application:
Water jets may be integrated into water features.

Model	Art. No.	Cascade	Water Bell	Foaming Jet Spray	Water Fleur-de-Lis	Water-fall	Cascade rotating
		7815	7817	7819	7821	7822	7823
WSP 4000	7860	×	×	×	×	×	×
WSP 7000	7861	×	×	×	×	×	×

Adaptable lamps → Example for application:
Underwater lighting of water jets and pond edges.

→ Products:
GARDENA Underwater lights Art. No. 7951
GARDENA *lightline* Transformers

Light/Fountain Nozzle → Example for application:
For installation in ponds and fountains.

→ Product:
GARDENA Light/Fountain Nozzle Art. No. 7953

Remote control → Example for application:
For operating water jets from the comfort of your patio or your living room.

Pond aeration

Filling the filter tank with zeolith

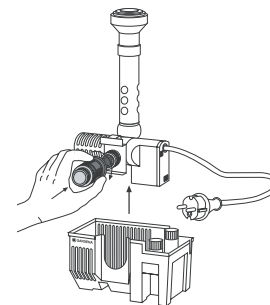
Information

Operation

Attaching ball-and-socket joint

→ Press ball-and-socket joint on straight to ensure O-ring fits correctly.

Installing the pump



1. Remove the pump from the filter basket and screw the regulator supplied onto the second opening of the pump up to the limit stop (→ max. delivery capacity on the vertical outlet). Then replace the pump in the filter basket.
2. Put the pump on a stable base to ensure that the upper edge of the filter tank is completely immersed in water.

Pay attention to minimum water depth

Please note the maximum submersion depth (see "Technical Data").

Starting the pump

Connect the power cable to a 230 V AC socket.

⚠ Caution! Pump will start running immediately!

Avoid dry operation

Avoid dry operation of the pump as dry running will produce undesirable heat and destroy the pump.

→ Products:
GARDENA Remote Control Set Art. No. 7874
GARDENA Remote Control Socket Art. No. 7875

→ Example for application:
To aerate the pond.

→ Product:
GARDENA Pond Aerator Art. No. 7936

Zeolith fulfils the following functions:

- Filters the water (→ protection for the pump).
- Bonds with excessive nutrients and causes their decomposition by bacteria (→ Ion exchange and the bonding of e.g. nitrate).
- Helps to keep the pond clean and maintain the biological balance.
- Provides stability for the pump

GARDENA Zeolith, 1 l Art. No. 7914
GARDENA Zeolith, 5 l Art. No. 7915

Note:

To ensure the zeolith functions correctly, we recommend you replace or clean it every 6 months (e.g. in salt water).

- Always unplug the pump first before working on it.
- The ball-and-socket joint ensures that the water jet is vertical.
- Follow the Safety and Assembly Information attached to the operating instructions.

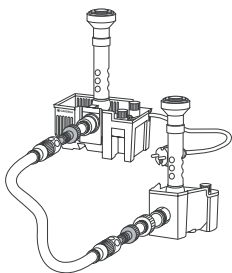
Horizontal or second outlet (→ operating a stream)

- Loosen the regulator by turning it anti-clockwise until you achieve the desired water flow from the vertical pipe of the fountain/water feature.
- In order to operate a stream we recommend the connector of a 1" (25 mm) GARDENA Spiral Pond Hose, Art. No. 7896. Connect it to the volume control of the second outlet and run the other end of the hose to the source of the stream.
- You may connect other terminals to the second outlet. For example, a separately installed water jet may be operated via the GARDENA Fountain/Light Bracket, Art. No. 7886. If necessary fix the light jet base with two screws.

Information:

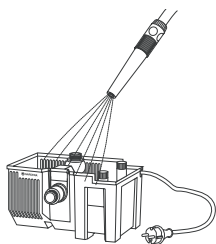
This significantly reduces the volume of the vertical water jet.

- If the max. delivery capacity of the second outlet is to be used then the vertical outlet should be closed with the end cap supplied.
- **Example: Hose pipe connection with the GARDENA Fountain/Light Bracket**
To achieve the maximum power of your pump we recommend you use a 25 mm (1") GARDENA Spiral Pond Hose, Art. No. 7896, together with the GARDENA Suction Hose Fittings, Art. No. 1724.
Alternatively, you can use the 19 mm (3/4") GARDENA Pond Hose, Art. No. 7895, together with the GARDENA "Profi" Maxi-Flow System Threaded Tap Connector, Art. No. 2802, and the GARDENA "Profi" Maxi-Flow System Hose Connector, Art. No. 2817.



Care Instructions

Cleaning the filter tank



Filter tank and pump should be free from dirt particles!

How to clean:

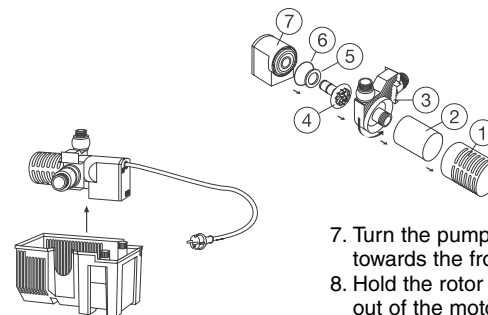
- Disconnect the plug!
- Remove the pump from the water.
- If necessary remove the gravel.
- Clean the pump and the filter using a water jet.
- If there are deposits of dirt inside the pump then dismantle the casing (→ see "Dismantling") and carefully clean the interior fittings with water.

Information: Do not use any hard objects or strong detergents!

Blocked feed impeller

If the feed impeller becomes blocked, the pump and the filter should be cleaned (see above).

Dismantling



1. Disconnect the plug!
 2. Remove the pump from the water.
 3. If necessary remove the gravel.
 4. Pull the pump pointing vertically upwards out of the filter tank.
 5. Pull the suction filter casing ① forwards and remove it.
 6. Remove the foam filter ② from the suction piece of the pump.
 7. Turn the pump casing ③ to the left and then pull it straight towards the front and remove it! Do not tilt!
 8. Hold the rotor by the feed impeller and pull the complete unit ④ out of the motor casing ⑦.
 9. Now you may remove the filter ring ⑤ and the seal ring ⑥ from the motor casing.
- Then assemble all the fittings reversing the order and direction in which they were dismantled. Please take care that the seal ring ⑥ is properly re-fitted.
- Make sure while assembling that you attach the pump casing with the pressure joint being cated, press it firmly and then turn it straight to the right.

Storage

Where to store



⚠ The pump should be stored out of the reach of children.

1. Take the pump out of the water and store away from frost before the first frost sets in.
2. Clean and check the pump carefully.
3. Store the pump in a container filled with water.
The mains plug must not be submerged.

Complaints/Repairs

If a fault occurs, the pump attempts to switch itself on up to 10 times. If the pump still fails to start, it switches itself off automatically after 40 seconds.

→ Remove mains plug and clean the pump if necessary.

If you have any problems with your Fountain/Stream Pump, please contact our Service or return the defective unit together with a short description of the problem – in case of guarantee, with the warranty card duly completed and signed – postage paid to one of the GARDENA Service Centres listed on the back of this leaflet.

The mains cable must only be replaced by GARDENA.

Product liability

We expressly point out that, in accordance with the product liability law, we are not liable for any damage caused by our units if it is due to improper repair or if parts exchanged are not original GARDENA parts or parts approved by us, and, if the repairs were not carried out by a GARDENA Service Centre. The same applies to spare parts and accessories.

Technical Data

	WSP 4000	WSP 7000	
Type	7860	7861	
Art. No.			
Rated power	65 W	120 W	
Flow	65 l/min	115 l/min	
Max. delivery head	3.2 m	4.3 m	
Max. submersion depth	3.0 m	3.0 m	
Power cable	10 m H05 RNF	10 m H05 RNF	
Fitting	33.3 mm (G 1) male thread	33.3 mm (G 1) male thread	
Max. media temperature	35 °C	35 °C	
Mains voltage	230 V	230 V	
Frequency	50 Hz	50 Hz	
Noise level L_{WA} ¹⁾	48 dB(A)	48 dB(A)	1) Measuring method according to EN 60335-1

EU Certificate of Conformity

The undersigned

GARDENA Kress + Kastner GmbH · Hans-Lorenser-Str. 40 · D-89079 Ulm

hereby certifies that, when leaving our factory, the units indicated below are in accordance with the harmonised EU guidelines, EU standards of safety and product specific standards.

This certificate becomes void if the units are modified without our approval.

Description of the units:

Fountain/Stream Pumps

Type:

WSP 4000 / WSP 7000

Art. No.:

7860 / 7861

EU directives:

Machinery Directive 98/37/EC
Electromagnetic Compatibility
89/336/EC

Low Voltage Directive

73/23/EC

Directive 93/68/EC

Harmonised

European standards:

EN 292-1

EN 292-2

EN 60335-1

EN 60335-2-41

Year of CE marking:

1999

Ulm, 01.06.1999

Thomas Heintl
Technical Dept. Manager

Guarantee



GARDENA guarantees this product for 3 years (from date of purchase). This guarantee covers all serious defects of the unit that can be proved to be material or manufacturing faults. Under warranty we will either replace the unit or repair it free of charge if the following conditions apply:

- The unit must have been handled properly and in keeping with the requirements of the operating instructions. Neither the purchaser nor a non-authorised third party have attempted to repair the unit.

Parts subject to wear (e.g. feed impeller) are excluded from this guarantee.

This manufacturer's guarantee does not affect the user's existing warranty claims against the dealer/seller.

In the event of a fault, please send the defective unit together with the receipt and a description of the fault, postage paid, to one of the GARDENA Service Centres on the back of this page.

Garantiekarte	Wasserspiel- / Bachlaufpumpe	WP 4000	
Warranty Card	Fountain/Stream Pump		
Bon de garantie	Pompe pour jets d'eau et cascades	WP 7000	
Garantiekaart	Waterspel-/beeklooppomp		
Garantikort	Fontän/ Bäck Pump		
Certificato di garanzia	Pompa per ruscelli e giochi d'acqua		
Tarjeta de garantía	Bomba para juego de agua / recorridos del agua		
Garantibevis	Fontæne/Vandløbs Pumpe		

Wurde gekauft am:	Händlerstempel
Was purchased on:	Dealer's stamp / Receipt
Achetée le (date et lieu d'achat) :	Cachet du revendeur
Werd gekocht op:	Stempel van de handelaar
Försäljningsdatum:	Återförsäljarens stämpel
Data di acquisto:	Timbro del rivenditore
Se vendió el:	Sello del comerciante
Købsdato:	Firmastempel

Beanstandung:
 Reasons for complaint:
 Défaut constaté :
 Klacht:
 Reklamation:
 Difetto riscontrato:
 Reclamación :
 Reklamation:



Deutschland

GARDENA Kress + Kastner GmbH
GARDENA Service
Hans-Lorensen-Straße 40
D-89079 Ulm
Produktfragen: (07 31) 490 - 123
Reparaturen: (07 31) 490 - 290

Argentina

Argensem S.A.
Venezuela 1075
(1618) El Talar - Buenos Aires

Australia

NYLEX Corporation Ltd.
25-29 Nepean Highway
P.O. Box 68
Mentone, Victoria 3194

Austria

GARDENA Österreich Ges. m.b.H.
Stettnerweg 11-15
2100 Korneuburg

Belgium

MARKT (Belgium) NV/SA
Sterrebeekstraat 163
1930 Zaventem

Brazil

M. Cassab
Av. das Nações Unidas, 20.882
Santo Amaro, CEP 04795-000
São Paulo - S.P.

Bulgaria / България

ДЕНЕКС ООД
бул. „Черни връх“ 43
София 1407

Canada

GARDENA Canada Ltd.
100, Summerlea Road
Brampton, Ontario
Canada L6T 4X3

Chile

Antonio Martinic Y CIA. LTDA.
Gilberto Fuenzalida 185 Loc.
Las Condes - Santiago de Chile

Costa Rica

Compania Exim
Euroiberoamericana S.A.
350 Sur del Automercado
Los Yoses
San Pedro

Cyprus

FARMOKIPIKI LTD
P.O. Box 7098
74, Digeni Akrita Ave.
1641 Nicosia

Czech Republic

GARDENA spol. s.r.o.
Ripská 20
62700 Brno

Denmark

GARDENA Danmark A/S
Naverland 8
2600 Glostrup

Finland

Habitec Oy
Martinkyläntie 52
01720 Vantaa

France

GARDENA France
Service Après-Vente
BP 50080
95948 ROISSY CDG Cedex

Great Britain

GARDENA UK Ltd.
27-28 Brenkley Way
Blezard Business Park
Seaton Burn
Newcastle upon Tyne
NE13 6DS

Greece

Agrokip G. Psomadopoulos & Co.
20, Lykourgou str.
Kallithea - Athens

Hungary

GARDENA Magyarország Kft.
Késmárk utca 22
1158 Budapest

Iceland

Heimilistaeki hf
Saetun 8
P.O. Box 5340
125 Reykjavik

Republic of Ireland

Michael McLoughlin & Sons
Hardware Limited
Long Mile Road
Dublin 12

Italy

GARDENA Italia S.r.l.
Via Donizetti 22
20020 Lainate (Mi)

Japan

KAKUDAI Mfg. Co. Ltd.
1-4-4, Itachibori Nishi-ku
Osaka 550

Luxembourg

Magasins Jules Neuberg
Grand Rue 30
Case Postale No. 12
Luxembourg 2010

Netherlands

MARKT (Holland) BV
Postbus 219
1380 AE Weesp

Neth. Antilles

Jonka Enterprises N.V.
Sta. Rosa Weg 196
P.O. Box 8200
Curaçao

New Zealand

NYLEX New Zealand Limited
Private Bag 94001
South Auckland Mail Centre
10 Offenhauser Drive
East Tamaki, Manukau

Norway

GARDENA Norge A/S
Postboks 214
2013 Skjetten

Poland

GARDENA Polska Sp. z o.o.
Szymanów 9 d
05-532 Baniocha

Portugal

MARKT (Portugal), Lda.
Recta da Granja do Marquês
Edif. GARDENA
Algueirão
2725-596 Mem Martins

Russia / Россия

АО АМИДА ТТЦ
ул. Мосфильмовская 66
117330 Москва

Singapore

Variware
Holland Road Shopping Centre
227-A 1st Fl., Unit 29
Holland Avenue
Singapore 1027

Slowenia / Croatia

Silk d.o.o. Trgovina
Brodišče 15
1236 Trzin

South Africa

GARDENA South Africa (Pty.) Ltd.
P.O. Box 11534
Vorna Valley 1686

Spain

ANMI Andreu y Miriam S.A.
Calle Pere IV, 111
08018 Barcelona

Sweden

GARDENA Svenska AB
Box 9003
20039 Malmö

Switzerland

GARDENA Kress + Kastner AG
Bitziberg 1
8184 Bachenbülach

Ukraine / Украина

АОЗТ АЛЬЦЕСТ
ул. Гайдара 50
г. Киев 01033

Turkey

Dost Diş Ticaret Mümesillik A.Ş.
Yeşilbağlar Mah. Başkent
Cad. No. 26
Pendik - İstanbul

USA

GARDENA
3085 Shawnee Drive
Winchester, VA 22604

7860-20.960.04/0001
GARDENA Kress + Kastner GmbH
Postfach 27 47, D-89070 Ulm
<http://www.gardena.de>

T3055256021D/1d.22289/07H